

**BINGHATTI**  
**SKYHALL**

Where Aspirations Meet Ascendantly

OFF-MARKET LAUNCH

**CONFIDENTIAL**

An exclusive collection of **717 meticulously crafted residences**, ranging from **studios** to expansive **one-bedroom apartments**, designed for those who seek to live within a vision. With its prime location in **Business Bay** and a curated selection of amenities, Binghatti Skyhall offers a vibrant community and an elevated lifestyle experience.





# UNIQUE SELLING POINTS

## HIGHLY INVESTABLE

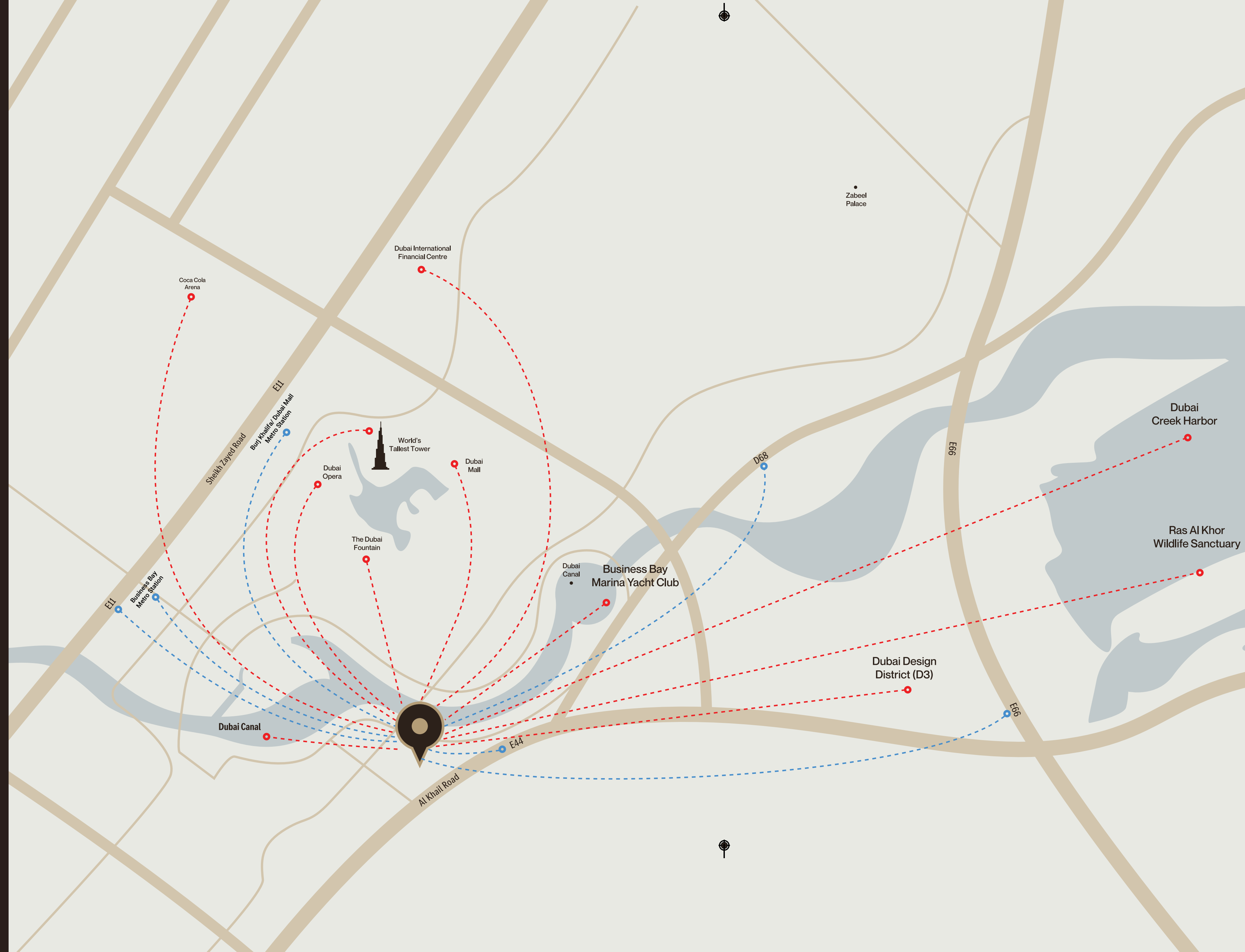
20 MINUTES AWAY FROM  
DUBAI INTERNATIONAL AIRPORT

## ACCESSIBILITY TO MAJOR ROADS:

- E11 Sheikh Zayed Road
- E44 Al Khail Road
- Al-A'amal Street
- Marasi Drive
- D68 Al Khail Road
- Metro Stations (Holiday Home, Uber, Taxi's)
  - Business Bay
  - Burj Khalifa/Dubai Mall

## PROXIMITY TO MAJOR SHOPPING CENTRES AND TOURIST ATTRACTIONS

- Dubai Opera
- Dubai Future Museum
- D3 / Dubai Design District
- DIFC — Gate Avenue
- Dubai Mall
- Burj Khalifa
- Dubai Opera
- Business Bay Marina Yacht Club
- Coca Cola Arena
- Dubai Creek Harbor
- Ras Al Khor Wildlife Sanctuary









# STARTING PRICES

STUDIOS

AED **985,000**

1 BEDROOM

AED **1,850,000**

**MOST AFFORDABLE PRICES IN THE ENTIRE MARKET**



**Freehold Ownership**  
**No Property Tax**  
**10-year Golden Visa Eligibility**





بن غاطي  
BIN GHATTI





**BINGHATTI**  
**SKYHALL**