

YOU ARE A GUIDE TO THE  
WORLD OF LUXURY



# DIFC Living

YOUR GATEWAY TO AN ELEVATED LIFESTYLE



# DIFC Living

RESIDENCES

WORKSPACES

DINING EXPERIENCES





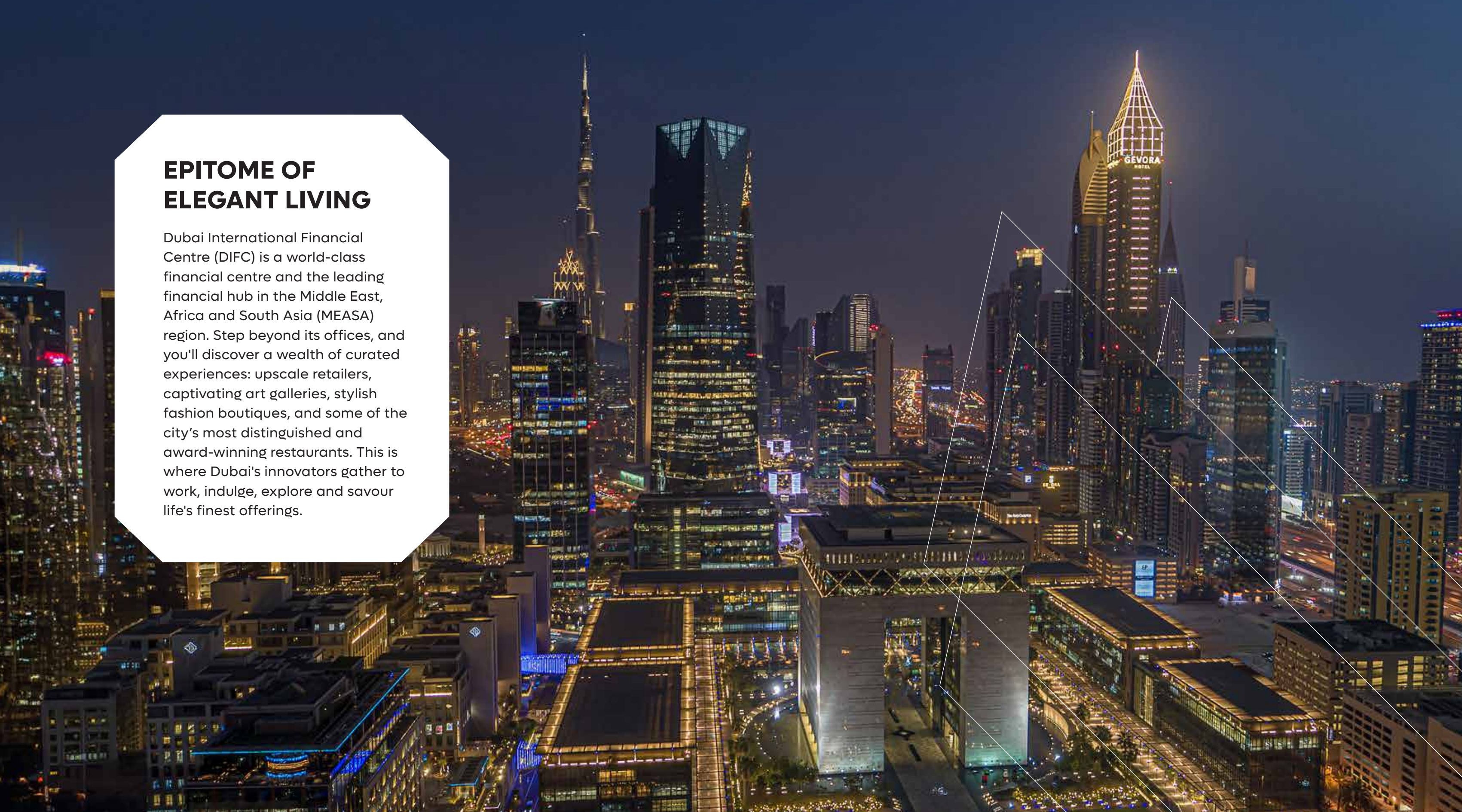
**YOUR  
GATEWAY  
TO REFINED  
LIVING**

**DIFC** Living



## EPITOME OF ELEGANT LIVING

Dubai International Financial Centre (DIFC) is a world-class financial centre and the leading financial hub in the Middle East, Africa and South Asia (MEASA) region. Step beyond its offices, and you'll discover a wealth of curated experiences: upscale retailers, captivating art galleries, stylish fashion boutiques, and some of the city's most distinguished and award-winning restaurants. This is where Dubai's innovators gather to work, indulge, explore and savour life's finest offerings.







## A VIBRANT URBAN LIFESTYLE

### GATE AVENUE

Dubai's sought-after lifestyle destination, DIFC Gate Avenue offers over 200 diverse dining, retail, fashion, wellness and lifestyle concepts. It features a fully connected, year-round walkable indoor and outdoor pathway from The Gate Building to Central Park Towers. With iconic architecture, green lawns, and an open-air promenade, Gate Avenue provides a picturesque setting to unwind and take in the stunning views. Visitors can enjoy popular cafés, pampering spa treatments, award-winning restaurants, and shopping. There are also fun play areas for children and a vibrant calendar of events and activities.



## EXCEPTIONAL ART AND DINING EXPERIENCES

### GATE VILLAGE

Gate Village is a coveted lifestyle destination in Dubai, renowned for its exceptional art and dining experiences. Indulge in the exquisite collection of award-winning restaurants, immerse yourself in world-renowned art galleries and explore auction houses that offer diverse and captivating artistic expressions. All this within a charming and unique outdoor environment.







## **FUEL FOR PROGRESSIVE MINDS**

### **GATE DISTRICT**

At Gate District, the buzz never ceases. This dynamic enclave attracts progressive intellectuals, influential decision-makers, visionary entrepreneurs, innovative minds, and esteemed socialites. Along the Marble Walk, there are retail outlets, cafés, restaurants, and a curated selection of health, beauty and wellness establishments — all designed for those constantly on the move.





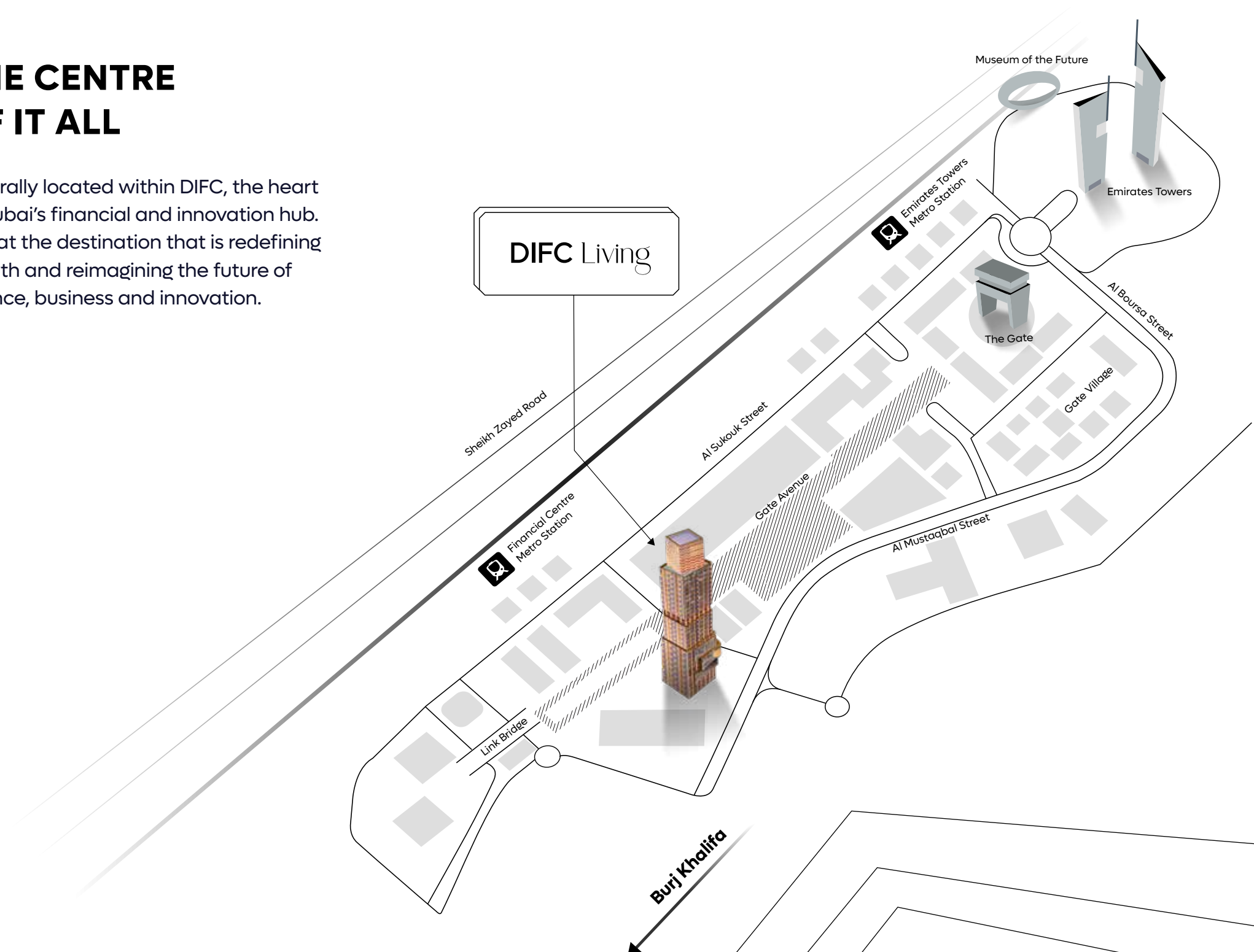
## **DISTINGUISHED LEGACY FINDS A NEW EXPRESSION**



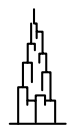
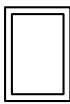



Welcome to a lifestyle like no other at DIFC Living, the first-ever residential offering from Dubai International Financial Centre (DIFC). These exceptional residences are flawlessly integrated into DIFC, exuding a harmonious state-of-the-art living environment that works in synergy for a thriving community and a sustainable future. DIFC Living offers its residents a seamless access to Gate Avenue. Enjoy unparalleled convenience and access to one of Dubai's most vibrant and sought-after districts. Discover your gateway to high-end living.



# THE CENTRE OF IT ALL

Centrally located within DIFC, the heart of Dubai's financial and innovation hub. Live at the destination that is redefining growth and reimagining the future of finance, business and innovation.



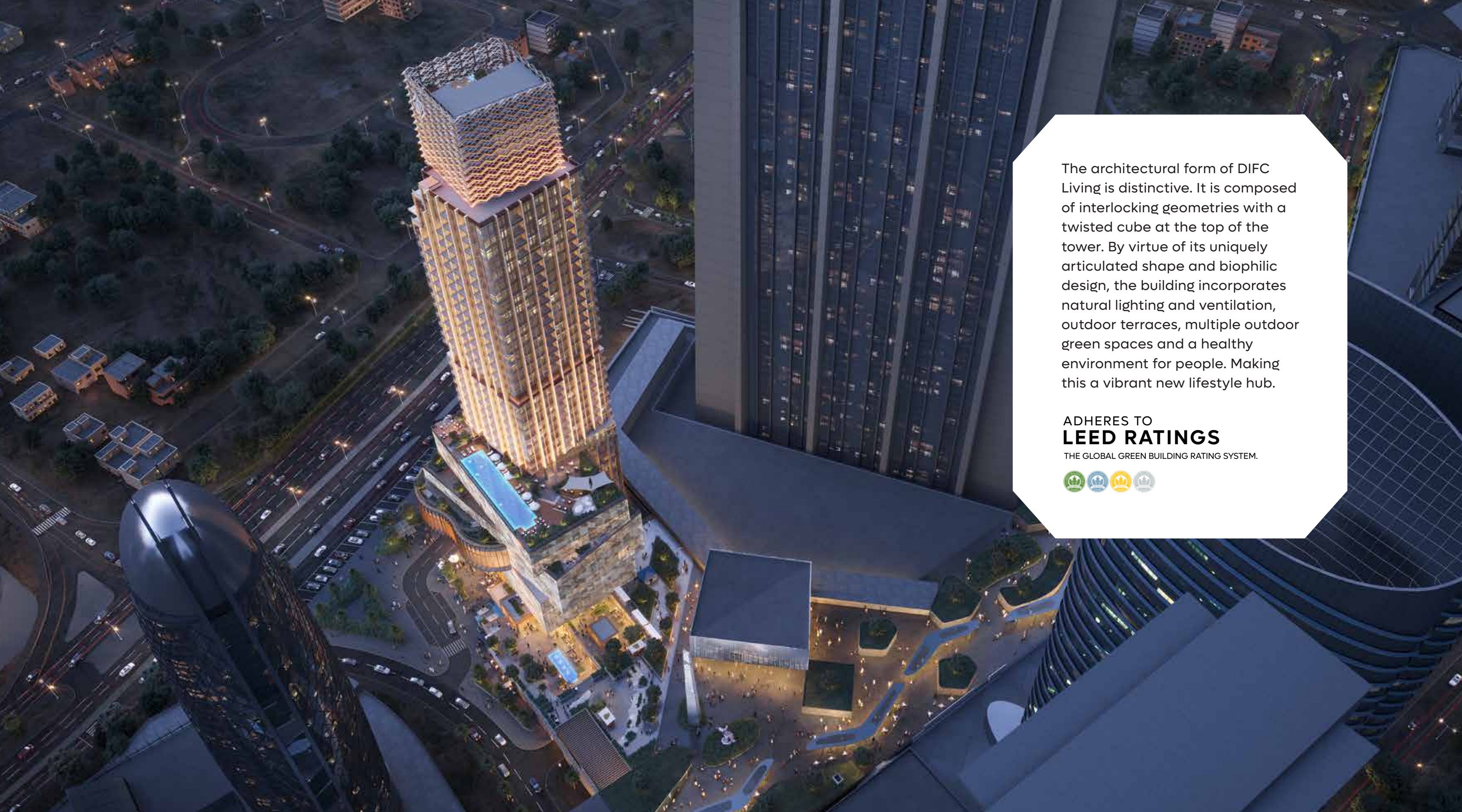
-  **5 MINS** (WALK)  
DUBAI METRO
  -  **5 MINS\***  
MUSEUM OF THE FUTURE
  -  **5 MINS\***  
BURJ KHALIFA
  -  **12 MINS\***  
DUBAI FRAME
  -  **15 MINS\***  
JUMEIRAH BEACH
  -  **20 MINS\***  
DUBAI INTERNATIONAL AIRPORT
  -  **22 MINS\***  
BURJ AL ARAB
- \* DISTANCE BY CAR



HALLMARK  
OF ICONIC  
DESIGN







The architectural form of DIFC Living is distinctive. It is composed of interlocking geometries with a twisted cube at the top of the tower. By virtue of its uniquely articulated shape and biophilic design, the building incorporates natural lighting and ventilation, outdoor terraces, multiple outdoor green spaces and a healthy environment for people. Making this a vibrant new lifestyle hub.

ADHERES TO  
**LEED RATINGS**  
THE GLOBAL GREEN BUILDING RATING SYSTEM.

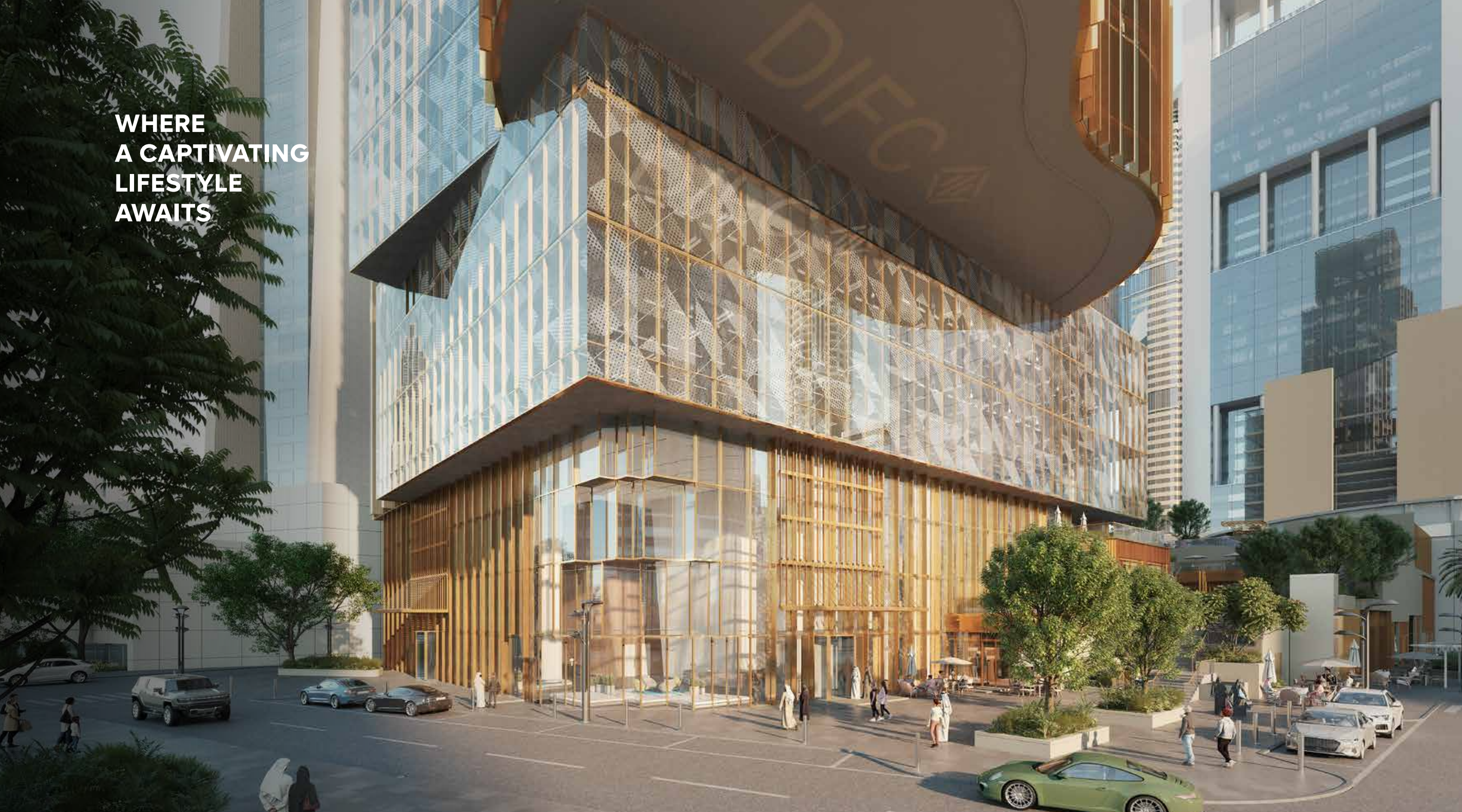








**WHERE  
A CAPTIVATING  
LIFESTYLE  
AWAITS**





**REDEFINE  
MODERN  
LIVING**











## CONTEMPORARY AND CHIC LIVING

DIFC Living presents a remarkable collection of residences, embodying timeless elegance and stylish living. These thoughtfully designed homes are a testament to the future of modern living. With spacious interiors, ranging from 644 sq. ft. to 2,388 sq. ft., each residence offers a harmonious blend of proportion and space. Upon entering, residents are enveloped in a soothing ambience of soft pastel shades, complemented by lofty ceilings and generously-sized rooms. The floor-to-ceiling glass windows fill the living spaces with an abundance of natural light, infusing a vibrant and uplifting atmosphere. Meticulous planning ensures optimal utilisation of space while providing captivating vistas that extend beyond the confines of each room.











The image shows a spacious, modern interior with a curved white staircase with wooden steps. The room features large windows on the right side, offering a view of a city skyline. In the foreground, there is a light-colored sofa with several cushions and a low coffee table. To the left, a wooden console table holds a stack of books and a decorative vase. The overall design is clean and minimalist, with a focus on natural materials and light colors.

## INTERIORS THAT REFLECT YOUR TASTE

At DIFC Living, meticulous attention is given to every detail. The personal space is elevated with exquisite finishes and clean lines that combine practicality with elegance. Tastefully selected, beautiful and high-quality materials enhance the overall design. The contemporary style is tailored for everyday living, incorporating the perfect ingredients. Each home is equipped with high-end German brand Bosch's electric built-in appliances, adding engineered aesthetics and sophistication.



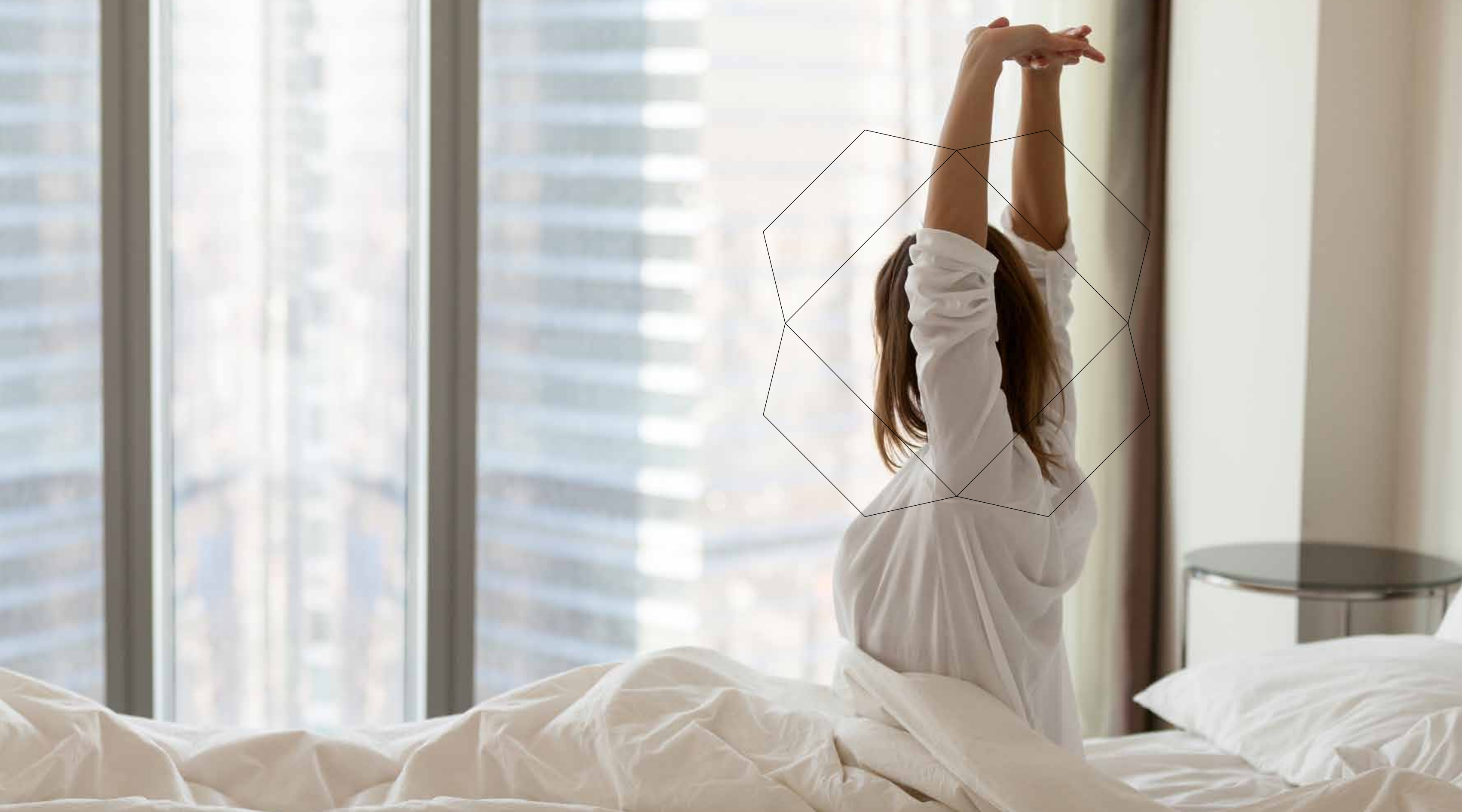
**BIG CITY  
LIFE**











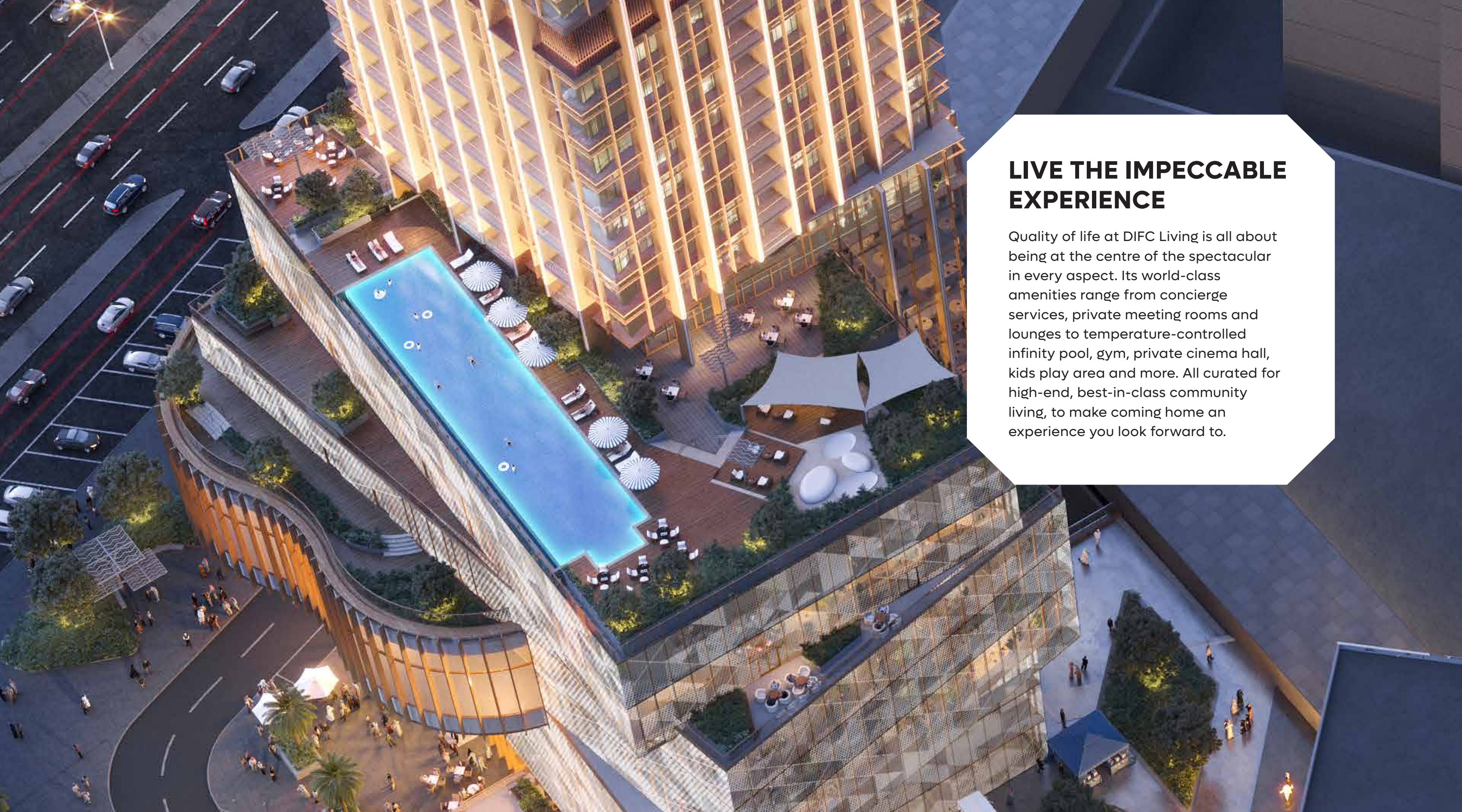












## **LIVE THE IMPECCABLE EXPERIENCE**

Quality of life at DIFC Living is all about being at the centre of the spectacular in every aspect. Its world-class amenities range from concierge services, private meeting rooms and lounges to temperature-controlled infinity pool, gym, private cinema hall, kids play area and more. All curated for high-end, best-in-class community living, to make coming home an experience you look forward to.





TEMPERATURE-CONTROLLED INFINITY POOL



FAMILY LOUNGE



FULLY EQUIPPED GYM



CONCIERGE SERVICES



**THE HUB  
OF INNOVATION  
FOR THE FUTURE  
OF BUSINESS**

**DIFC Living**





## REIMAGINING WORK

Innovation Two, located on the first nine floors of DIFC Living, offers dedicated workspaces designed to foster an innovative ecosystem. It provides Grade A level workspaces with modern facilities, supporting the growth of tech firms, innovation companies, digital labs, venture capital firms, regulators and educational entities to reach new heights.











## GLAMOUR INSPIRES GLAMOUR

DIFC Living is more than just a place to live. It embodies exclusivity and grandeur through its high-end retail spaces, fine dining experiences, and multifunctional entertainment zones. These features are seamlessly interconnected by pedestrian-friendly walkways, ensuring convenient access and a cohesive experience.











## **DIFC: DRIVING THE FUTURE OF LIVING**

Dubai International Financial Centre (DIFC) is the leading global financial centre in the Middle East, Africa and South Asia (MEASA) region, and the region's largest financial ecosystem with more than 39,000 professionals working across over 4,900 active registered companies. With the announcement of the DIFC Living project, the centre is continuing its journey of driving the future of finance, enabling the economies of the future, and blending the best aspects of life and work.





For more information,  
please visit:  
DIFC Living Sales Gallery  
Gate Village | DIFC | Dubai  
10am – 6pm from Monday – Saturday  
[www.difcliving.ae](http://www.difcliving.ae)

---

#### DISCLAIMER

The renderings and visualisations in this brochure are for illustrative and marketing purposes only. While the information provided is accurate and reliable at the time of publication, it is important to note that only the information included in the final Sales and Purchase Agreement will carry legal significance.





# THANKS FOR WATCHING

CONTACT US FOR MORE INFORMATION

 [www.svrealstate.agency](http://www.svrealstate.agency)

 [svrealstate\\_agency](https://t.me/svrealstate_agency)

 [svrealstate\\_agency](https://wa.me/svrealstate_agency)

 [svrealstate@agency](mailto:svrealstate@agency)

 +9 909 999 99 99