



YOU ARE A GUIDE TO THE  
WORLD OF LUXURY

# The Astera

INTERIORS BY ASTON MARTIN



DARGLOBAL

Joint Development Partner



ARVEES

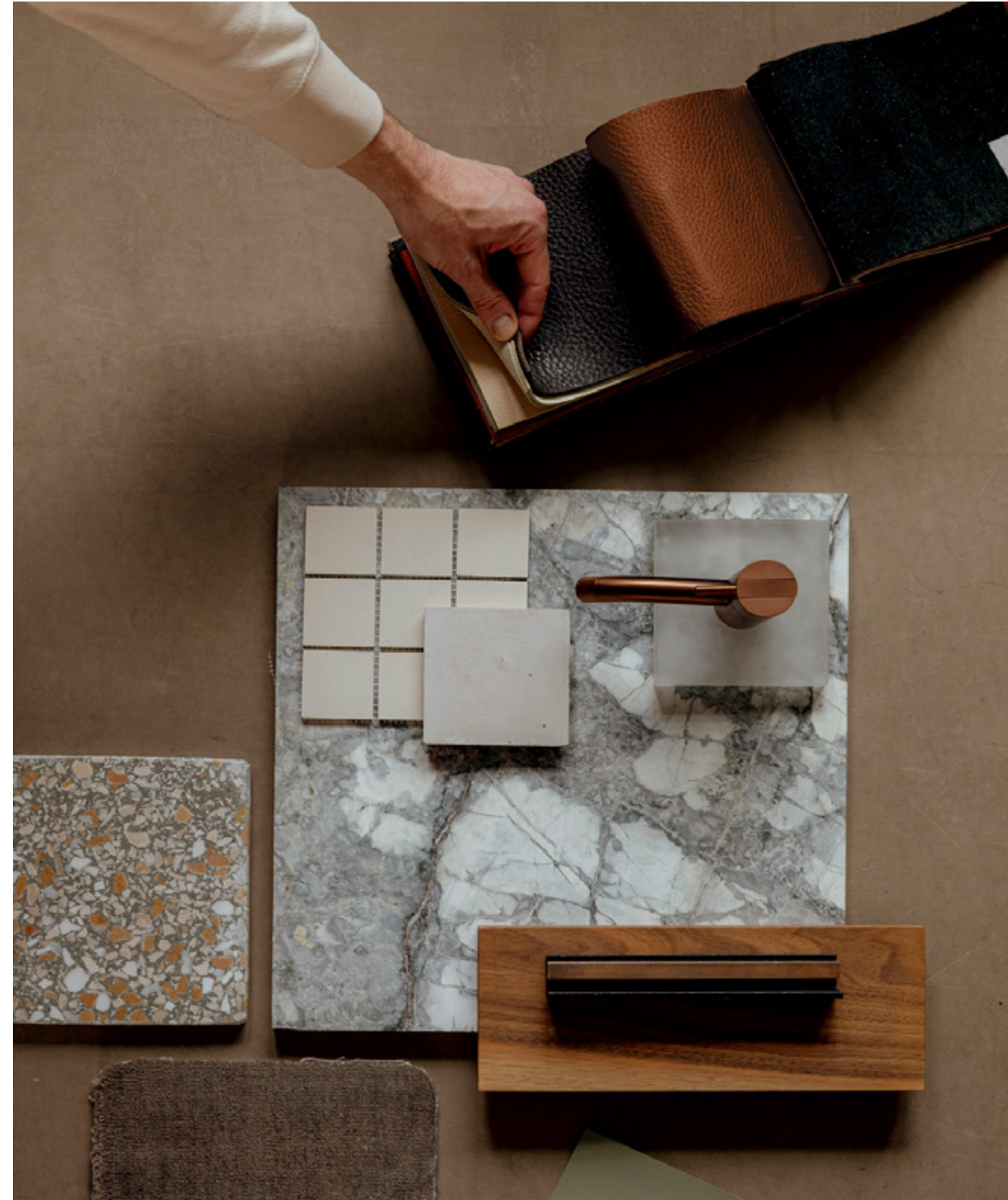
THE MOST DESIRABLE LUXURY RESIDENCES IN THE WORLD

IMMERSE YOURSELF IN  
UNWAVERING  
BEAUTY





EXPERIENCE THE  
FIERCELY INDEPENDENT  
ISLAND SPIRIT



DISCOVER  
EXCEPTIONAL  
ENGINEERING



Disclaimer: Illustrative concept visuals, subject to final interior designs

# The Astera

INTERIORS BY ASTON MARTIN



DARGLOBAL





## BIRTH OF A LEGEND

# ASTON MARTIN

The remarkable story of Aston Martin began on January 15th, 1913, when founders Robert Bamford and Lionel Martin established Bamford and Martin Limited, operating from a modest workshop on Henniker Mews in London. Their vision of crafting cars renowned for impeccable design and superior performance captured the public's imagination, a fascination that endures even after a century.

In 1914, the name Aston Martin was adopted, a fitting choice inspired by Lionel's success at the Aston Hill Climb in Buckinghamshire, England.

Driven by a spirit of competition from the outset, Aston Martin has evolved into an iconic brand synonymous with artisanal luxury, timeless elegance, exceptional performance, and triumphs in international motorsport since those pioneering days.



DARGLOBAL

# ENGINEERING THE WORLD'S MOST DESIRABLE

DRIVEN BY BRITISH INGENUITY

Infused with the spirit of British ingenuity, The Astera, Interiors by Aston Martin, epitomizes the seamless fusion of bespoke style, cutting-edge material science, meticulous craftsmanship, and unparalleled functionality, resulting in the creation of the world's most desirable luxury residences.

In collaboration with DarGlobal, this exceptional blend of expertise and innovation has culminated in the birth of The Astera, an exclusive residential tower, where every detail reflects a commitment to excellence and sophistication.







## AUTHENTIC ISLAND LIVING

ONLY 60 MIN AWAY FROM DUBAI

Cushioned along the pristine shores of Ras Al Khaimah lies Al Marjan island, one of four exquisite man-made coral-shaped islands that extend into the azure waters of the Arabian Gulf.

The Astera adds to the allure of the island, just 60 minutes away from the vibrant city of Dubai, residents can enjoy an elevated lifestyle that seamlessly blends seclusion and convenience.

AL MARJAN ISLAND

# THE WONDERS OF COASTAL LIVING

in Ras Al Khaimah

With its lush landscapes and diverse marine life, Al Marjan Island provides a picturesque setting and unparalleled experiences that cater to every desire. You can bask on pristine beaches, enjoy world-class resorts, luxury hotels, retail outlets, and a wide range of recreational activities.

With its breathtaking sunsets, vibrant nightlife, and exceptional amenities, living in The Astera, on Al Marjan Island, not only embodies, but elevates, the wonders of coastal living.



# AL MARJAN ISLAND, UAE



45 min

DUBAI INTERNATIONAL AIRPORT



60 min

DUBAI MALL



60 min

DUBAI INTERNATIONAL FINANCIAL CENTRE



# PERFECTLY LOCATED

**00 min**

Your Direct Beach Access

**03 min**

Al Marjan Island Resort & Spa

**04 min**

Al Marjan Island Beach Club

**05 min**

Al Marjan Island Amphitheater  
(Event Venue)

**05 min**

Wynn Resort

**06 min**

DoubleTree by Hilton Resort & Spa  
Marjan Island

**06 min**

Al Marjan Island Boulevard  
(Shopping and Dining Area)

**06 min**

Al Marjan Island Promenade  
(Scenic Walkway)


**07 min**

Marjan Beach

**27 min**

The Ritz-Carlton Ras Al Khaimah,  
Al Hamra Beach





PANORAMIC VIEWS

## OF THE ARABIAN GULF & DIRECT BEACH ACCESS

The Astera is situated in a location that epitomizes the spirit of excitement and elegance, mirroring the brand's renowned prestige. Nestled within one of the prime waterfront locations in Al Marjan Island, the residential tower offers sweeping vistas of the Arabian Gulf, the city's iconic skyline, and the bustling island.

Residents will enjoy direct beach access within the vibrant and rapidly expanding greater downtown area of Ras Al Khaimah. This includes the bustling neighborhoods of the island, the luxury resorts, and attractions, each brimming with an array of amenities to explore and indulge in.

MASTERFULLY DESIGNED  
BY THE LEGENDARY  
ASTON MARTIN

Crafted to harmonize with the surrounding landscape of Al Marjan Island, each residence is designed to emulate the dynamic flow of a power wave, ensuring breathtaking views from every angle.

Aston Martin, a brand synonymous with luxury, innovation, and cutting-edge design, brings its expertise to the interiors of these residential tower. The brand's signature style, featuring elegant lines, premium materials, and a sophisticated aesthetic is reflected in every detail.



Disclaimer: Illustrative concept visuals, subject to final interior designs



INTERIORS

## PASSIONATELY DESIGNED

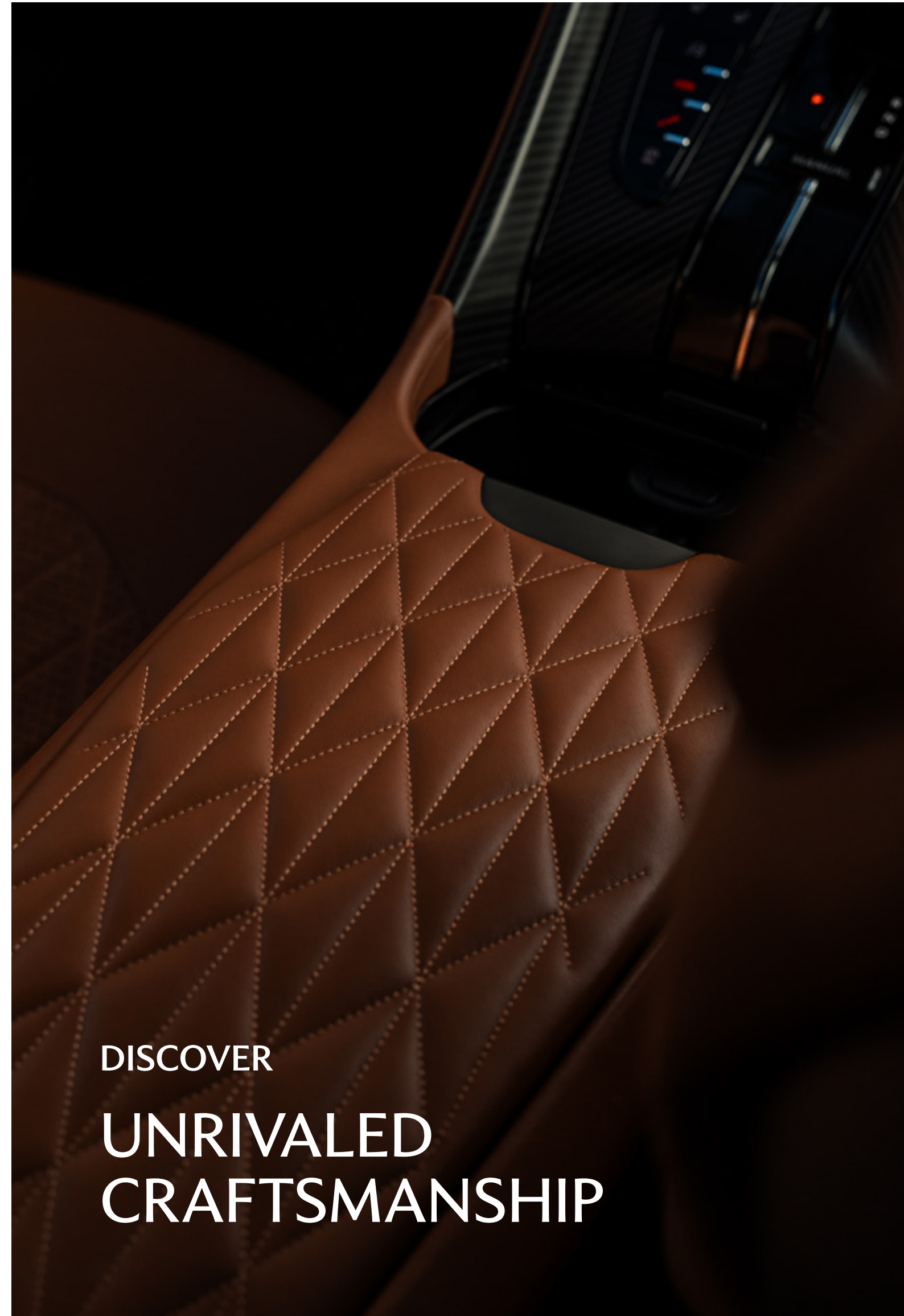
Inspired by the sleek lines and dynamic forms of the Aston Martin product, the interiors of the residences are a testament to over 110 years of British ingenuity, craftsmanship, and material science.

A plethora of rich materials such as fine leather, polished metals, and exotic woods are seamlessly integrated into the spaces, exuding performance and bespoke style.



Disclaimer: Illustrative concept visuals, subject to final interior designs





DISCOVER  
UNRIVALED  
CRAFTSMANSHIP





DETAILS

## METICULOUSLY CRAFTED

Each meticulous detail elevates the living experience, ensuring optimal performance and comfort.

With a commitment to excellence, The Astera, Interiors by Aston Martin, offers a bespoke lifestyle experience that embodies the essence of luxury living.



Disclaimer: Illustrative concept visuals, subject to final interior designs

CREATURE COMFORTS

# FOR THE DISCERNING FEW



At the podium of the tower, residents are treated to a range of world-class amenities, including direct beach access. From an infinity pool offering breathtaking views of the ocean to a scenic walk track and lush green spaces, every corner invites relaxation and rejuvenation.



Indoor cinema



Fitness centre



Multipurpose hall



Kids play area



Yoga lawn



Spa



Infinity pool



Pool bar



Direct beach access

## WORLD-CLASS AMENITIES DECK

- 1 Indoor Cinema
- 2 Fitness Centre
- 3 Multipurpose Hall
- 4 Kids Play Area
- 5 Yoga Lawn
- 6 Spa
- 7 Infinity Pool
- 8 Pool bar





EVERY SENSE  
EMPOWERED



# FLOOR PLANS

# 3 BEDROOMS VILLA TYPE A

# The Astera

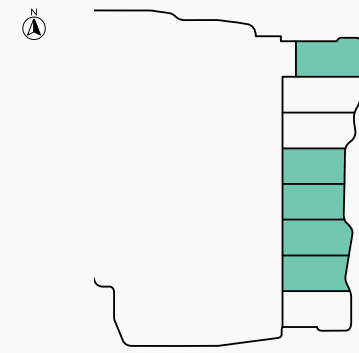
INTERIORS BY ASTON MARTIN



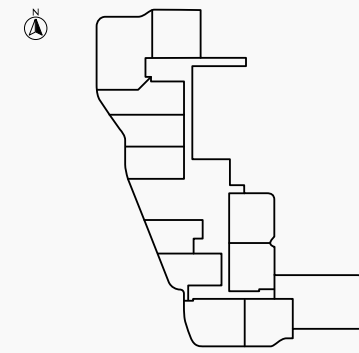
SEA & ISLAND VIEW

BEACH FRONT VIEW

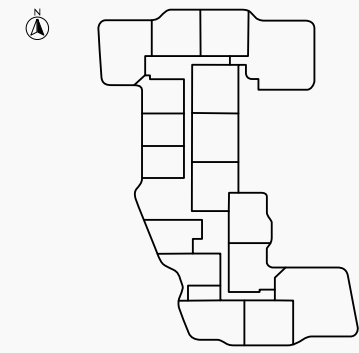
FLOOR  
GROUND



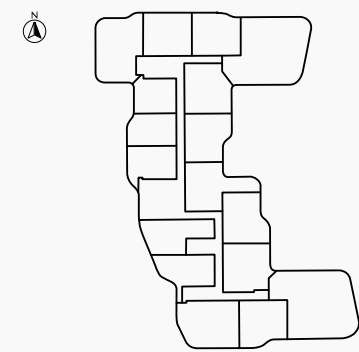
FLOOR  
2



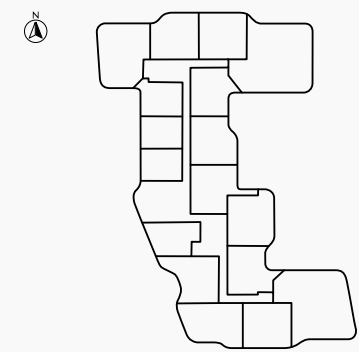
FLOOR  
3



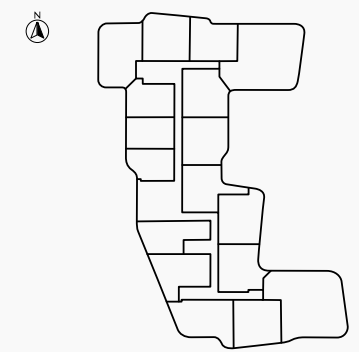
FLOORS  
4, 8, 11, 13, 16



FLOORS  
5, 7, 10, 12, 14

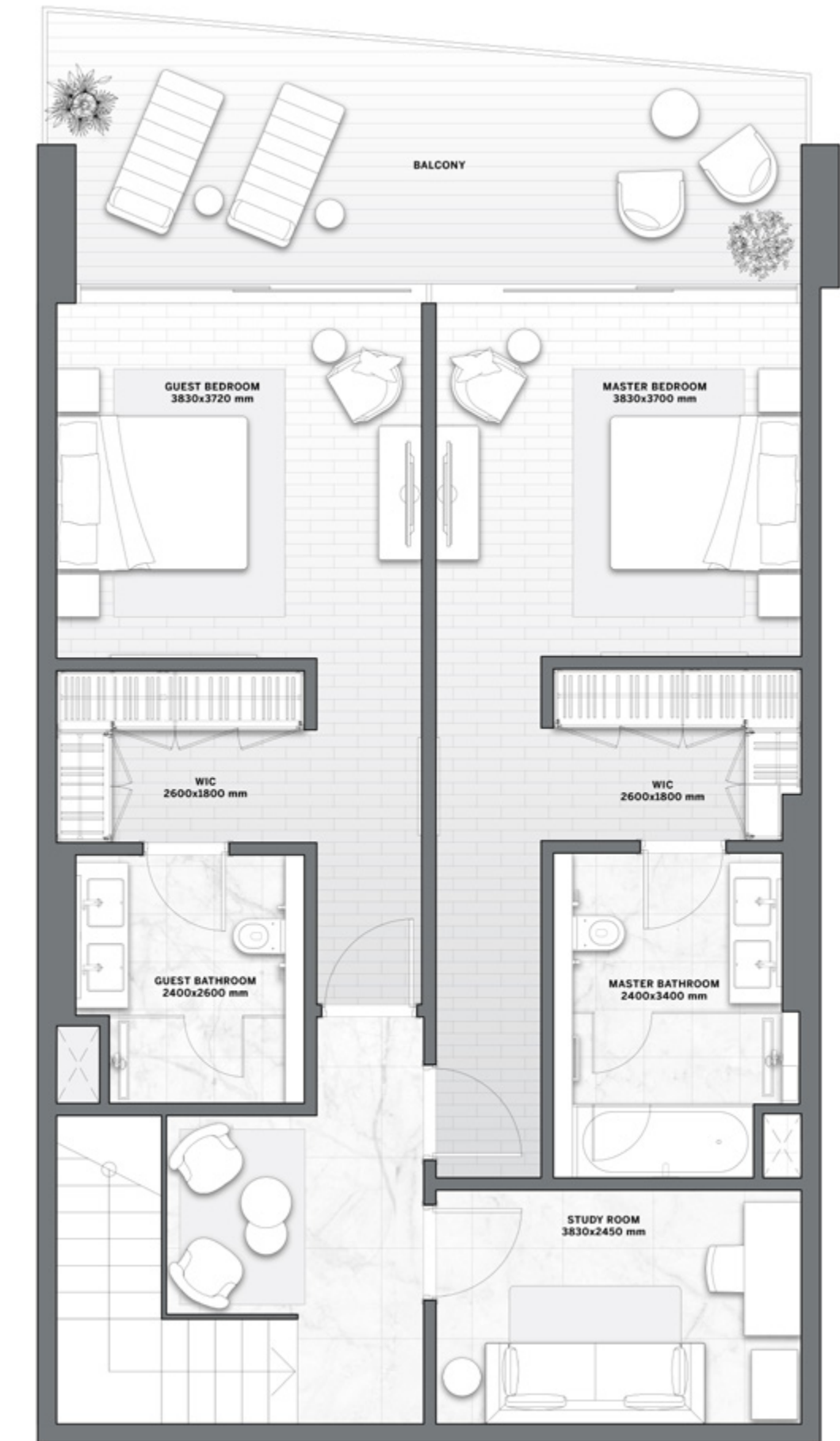
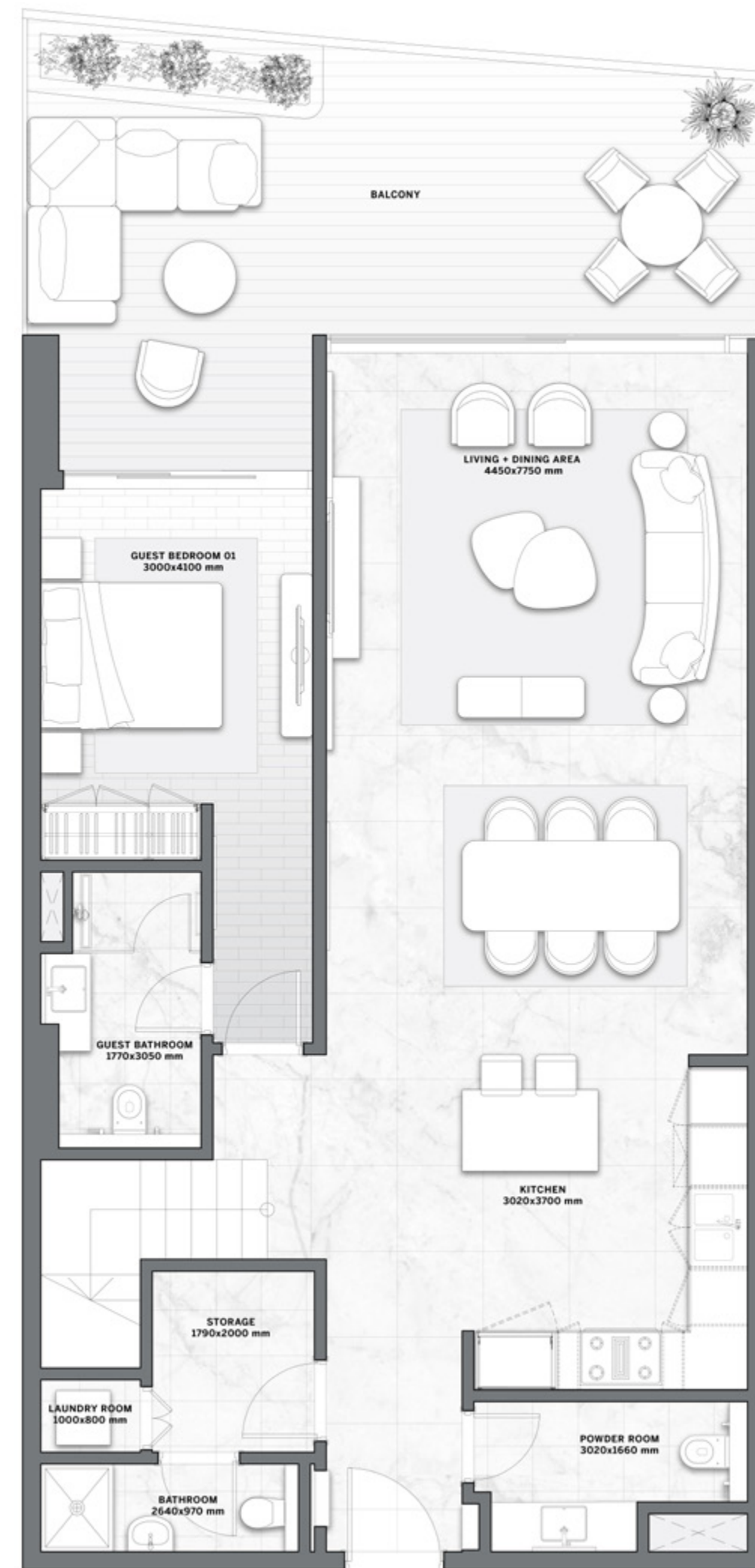


FLOORS  
6, 9, 15



RESIDENCE	SQM	SQFT
Internal Area	195	2,098
Balcony Area	33 - 44	360 - 476
<b>Total Built up Area</b>	<b>228 - 239</b>	<b>2,456 - 2,573</b>

Disclaimer: All pictures, plans, layouts, information, data and details included in this brochure are indicative only and may change at any time up to the final 'as built' status in accordance with final designs of the project, regulatory approvals and planning permissions. All accessories and interior finishes such as wallpaper, chandeliers, furniture, electronics, white goods, curtains, hard and soft landscaping, pavements, features, gym, and other elements displayed in the brochure, or between the plot boundary, are not part of the unit and are shown for illustrative purposes only.

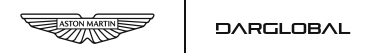




# 3 BEDROOMS VILLA TYPE B

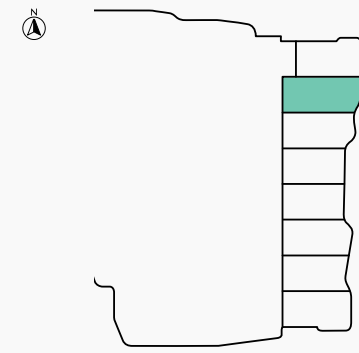
# The Astera

INTERIORS BY ASTON MARTIN

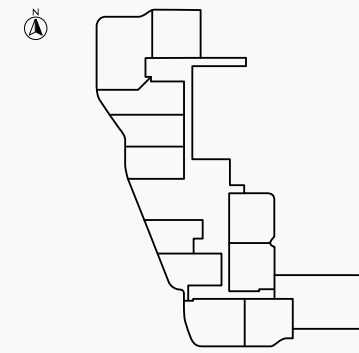


SEA & ISLAND VIEW

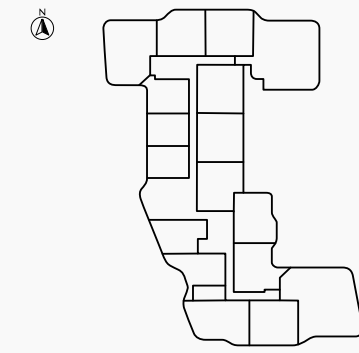
FLOOR  
GROUND



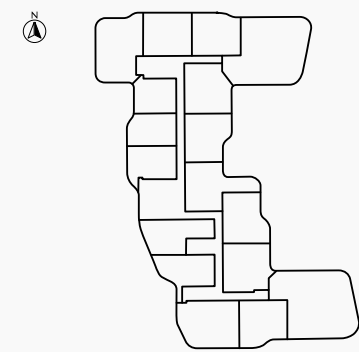
FLOOR  
2



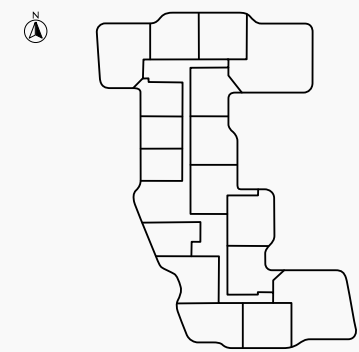
FLOOR  
3



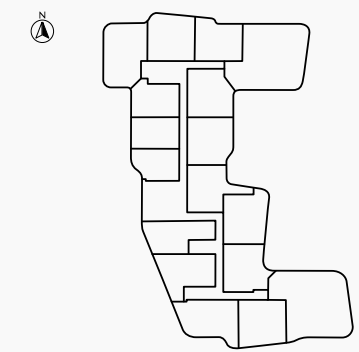
FLOORS  
4, 8, 11, 13, 16



FLOORS  
5, 7, 10, 12, 14



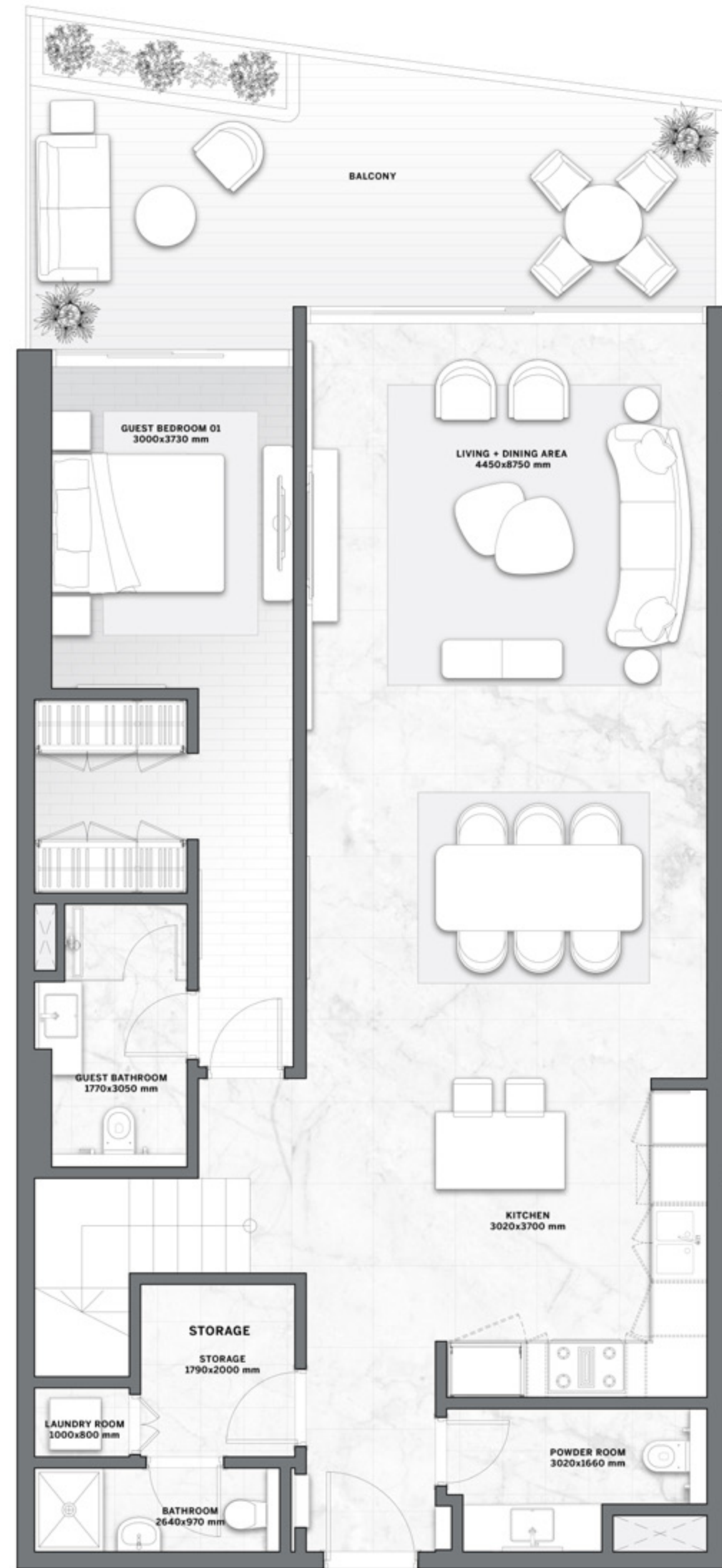
FLOORS  
6, 9, 15



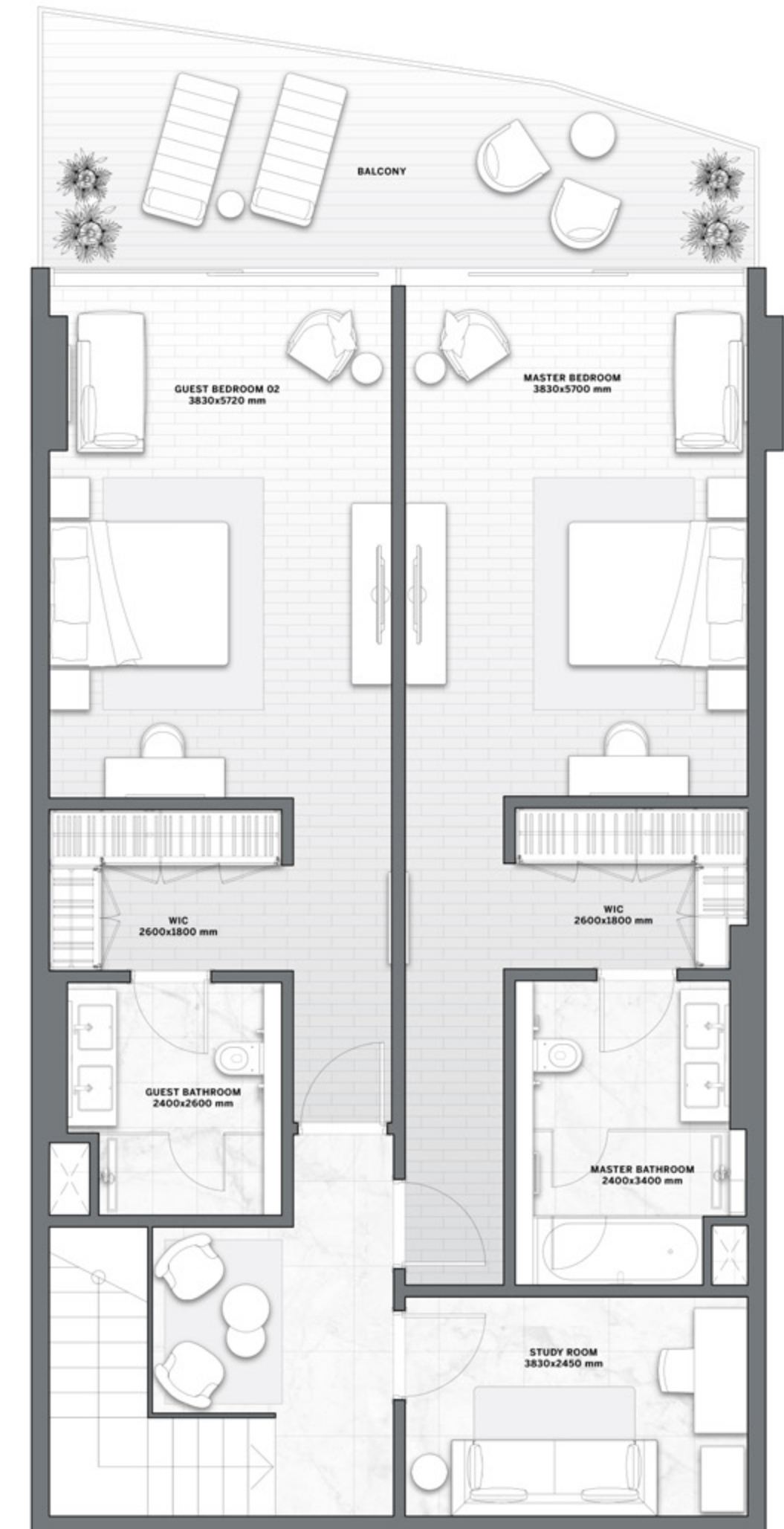
BEACH FRONT VIEW

RESIDENCE	SQM	SQFT
Internal Area	226	2,431
Balcony Area	41	445
<b>Total Built up Area</b>	<b>267</b>	<b>2,876</b>

Disclaimer: All pictures, plans, layouts, information, data and details included in this brochure are indicative only and may change at any time up to the final 'as built' status in accordance with final designs of the project, regulatory approvals and planning permissions. All accessories and interior finishes such as wallpaper, chandeliers, furniture, electronics, white goods, curtains, hard and soft landscaping, pavements, features, gym, and other elements displayed in the brochure, or between the plot boundary, are not part of the unit and are shown for illustrative purposes only.



LOWER LEVEL

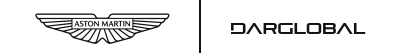


UPPER LEVEL

# 3 BEDROOMS VILLA TYPE C

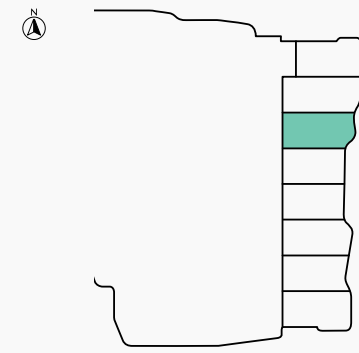
# The Astera

INTERIORS BY ASTON MARTIN

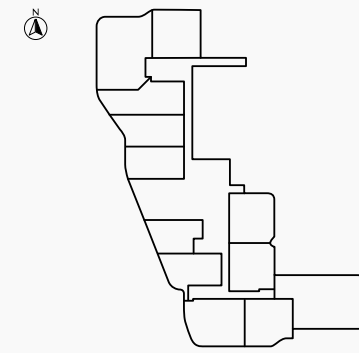


SEA & ISLAND VIEW

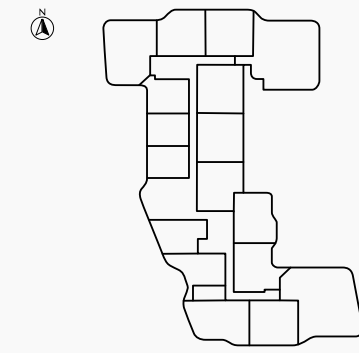
FLOOR  
GROUND



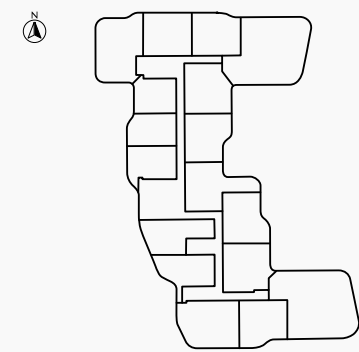
FLOOR  
2



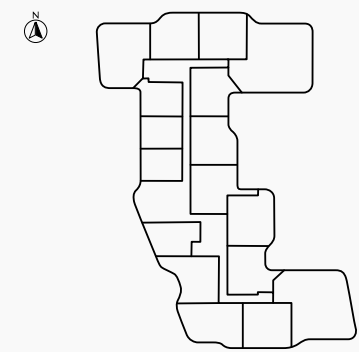
FLOOR  
3



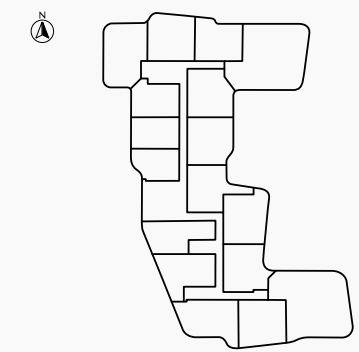
FLOORS  
4, 8, 11, 13, 16



FLOORS  
5, 7, 10, 12, 14



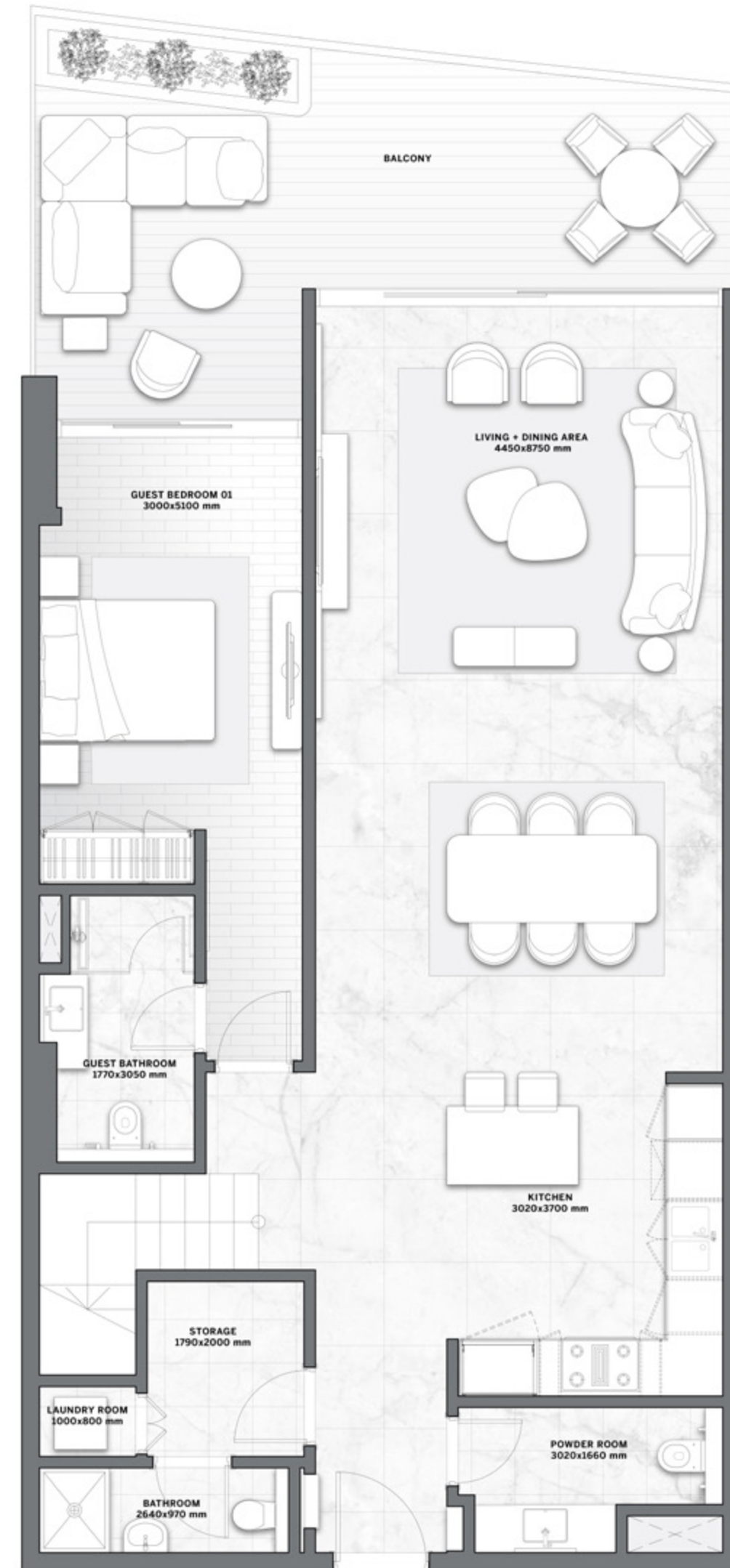
FLOORS  
6, 9, 15



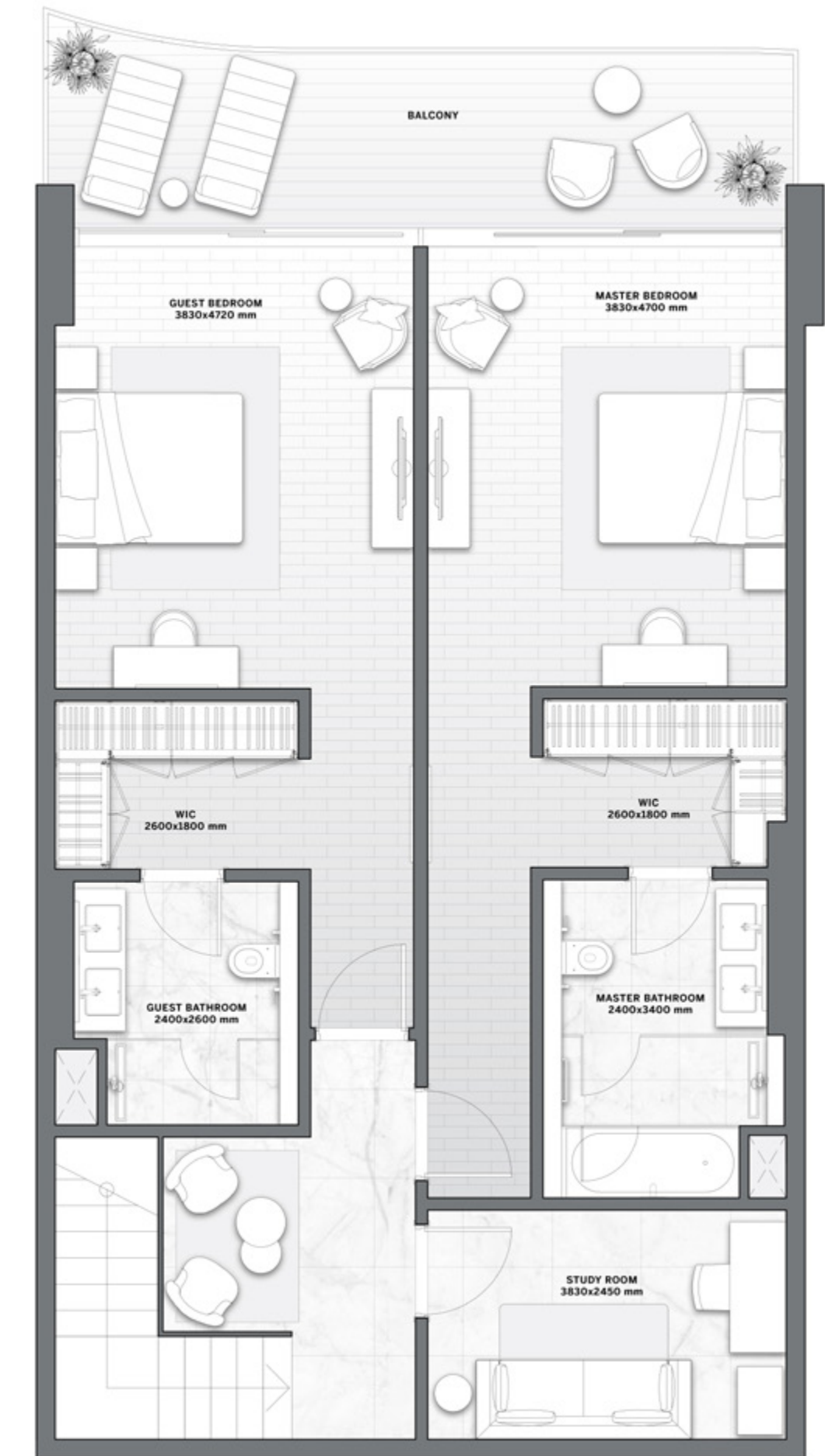
BEACH FRONT VIEW

RESIDENCE	SQM	SQFT
Internal Area	211	2,269
Balcony Area	41	440
<b>Total Built up Area</b>	<b>252</b>	<b>2,709</b>

Disclaimer: All pictures, plans, layouts, information, data and details included in this brochure are indicative only and may change at any time up to the final 'as built' status in accordance with final designs of the project, regulatory approvals and planning permissions. All accessories and interior finishes such as wallpaper, chandeliers, furniture, electronics, white goods, curtains, hard and soft landscaping, pavements, features, gym, and other elements displayed in the brochure, or between the plot boundary, are not part of the unit and are shown for illustrative purposes only.



LOWER LEVEL



UPPER LEVEL

# 3 BEDROOMS VILLA TYPE D

# The Astera

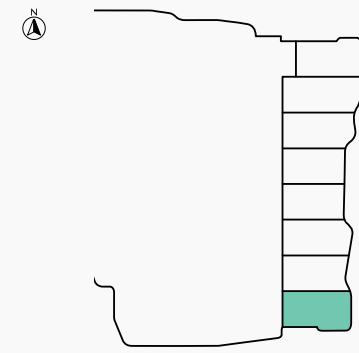
INTERIORS BY ASTON MARTIN



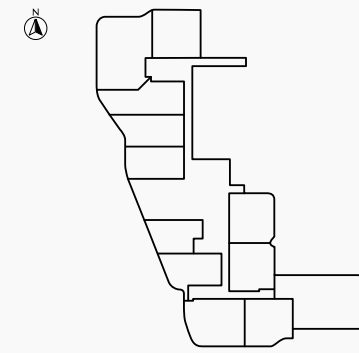
SEA & ISLAND VIEW

BEACH FRONT VIEW

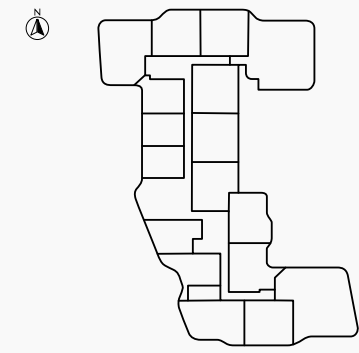
FLOOR  
GROUND



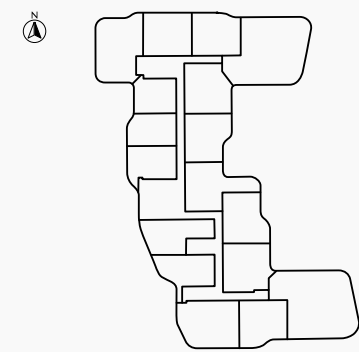
FLOOR  
2



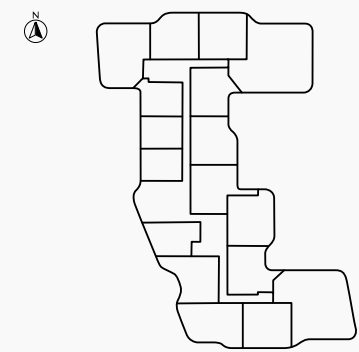
FLOOR  
3



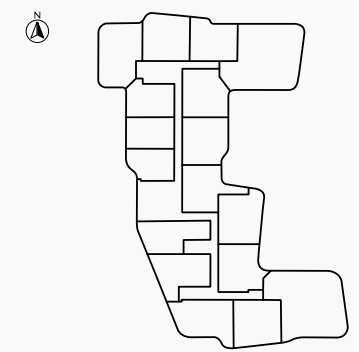
FLOORS  
4, 8, 11, 13, 16



FLOORS  
5, 7, 10, 12, 14



FLOORS  
6, 9, 15

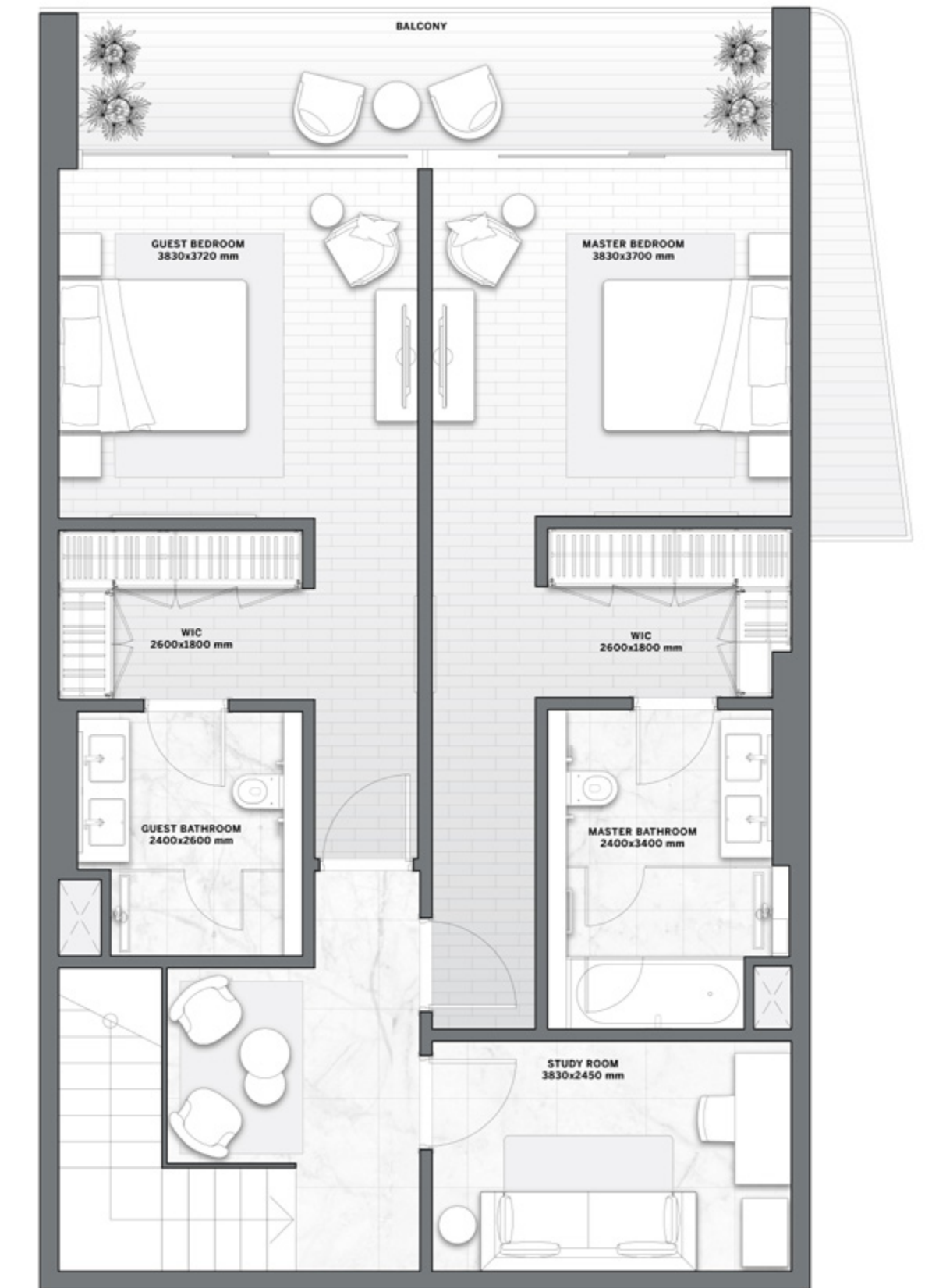


RESIDENCE	SQM	SQFT
Internal Area	194	2,090
Balcony Area	34	364
<b>Total Built up Area</b>	<b>228</b>	<b>2,455</b>

Disclaimer: All pictures, plans, layouts, information, data and details included in this brochure are indicative only and may change at any time up to the final 'as built' status in accordance with final designs of the project, regulatory approvals and planning permissions. All accessories and interior finishes such as wallpaper, chandeliers, furniture, electronics, white goods, curtains, hard and soft landscaping, pavements, features, gym, and other elements displayed in the brochure, or between the plot boundary, are not part of the unit and are shown for illustrative purposes only.



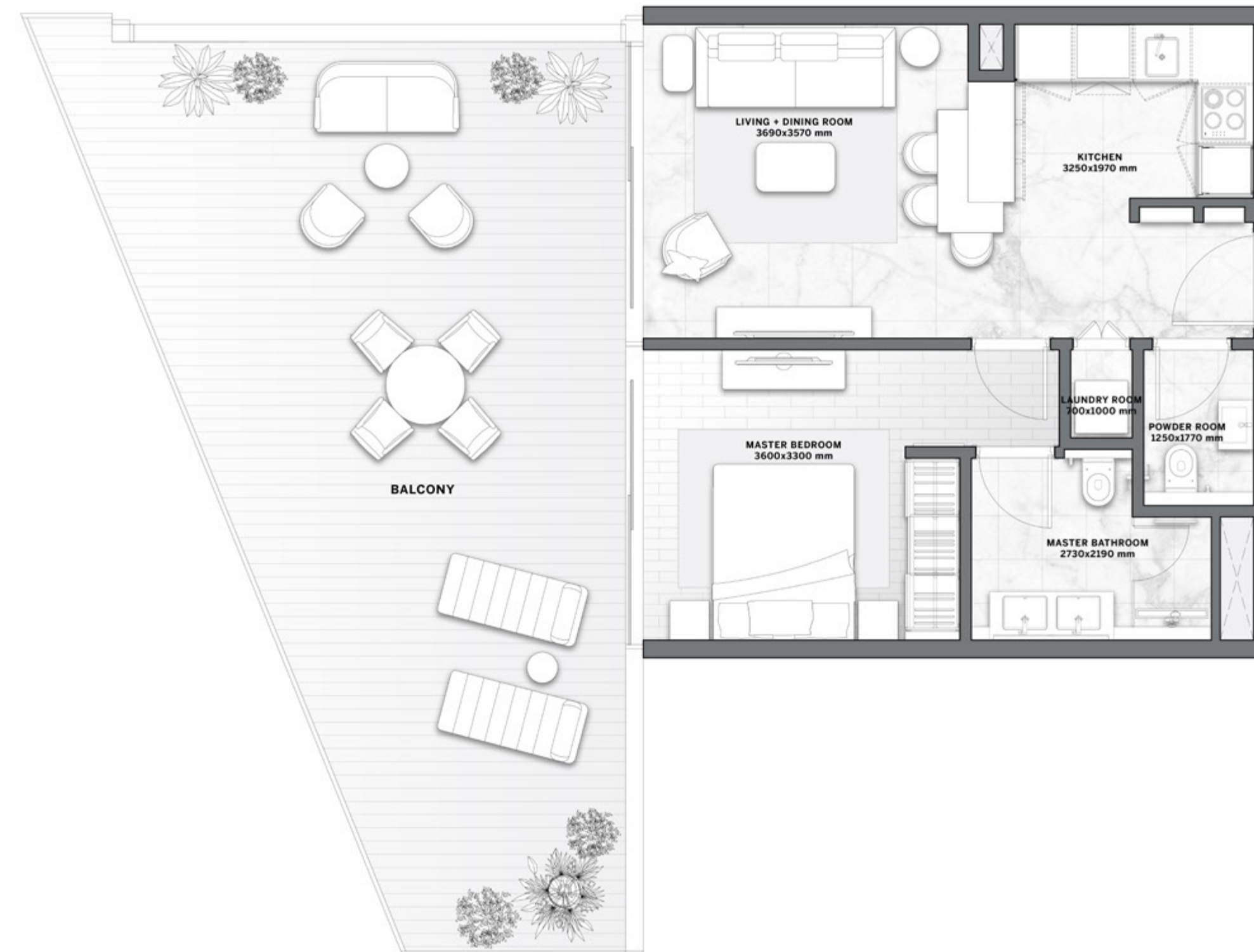
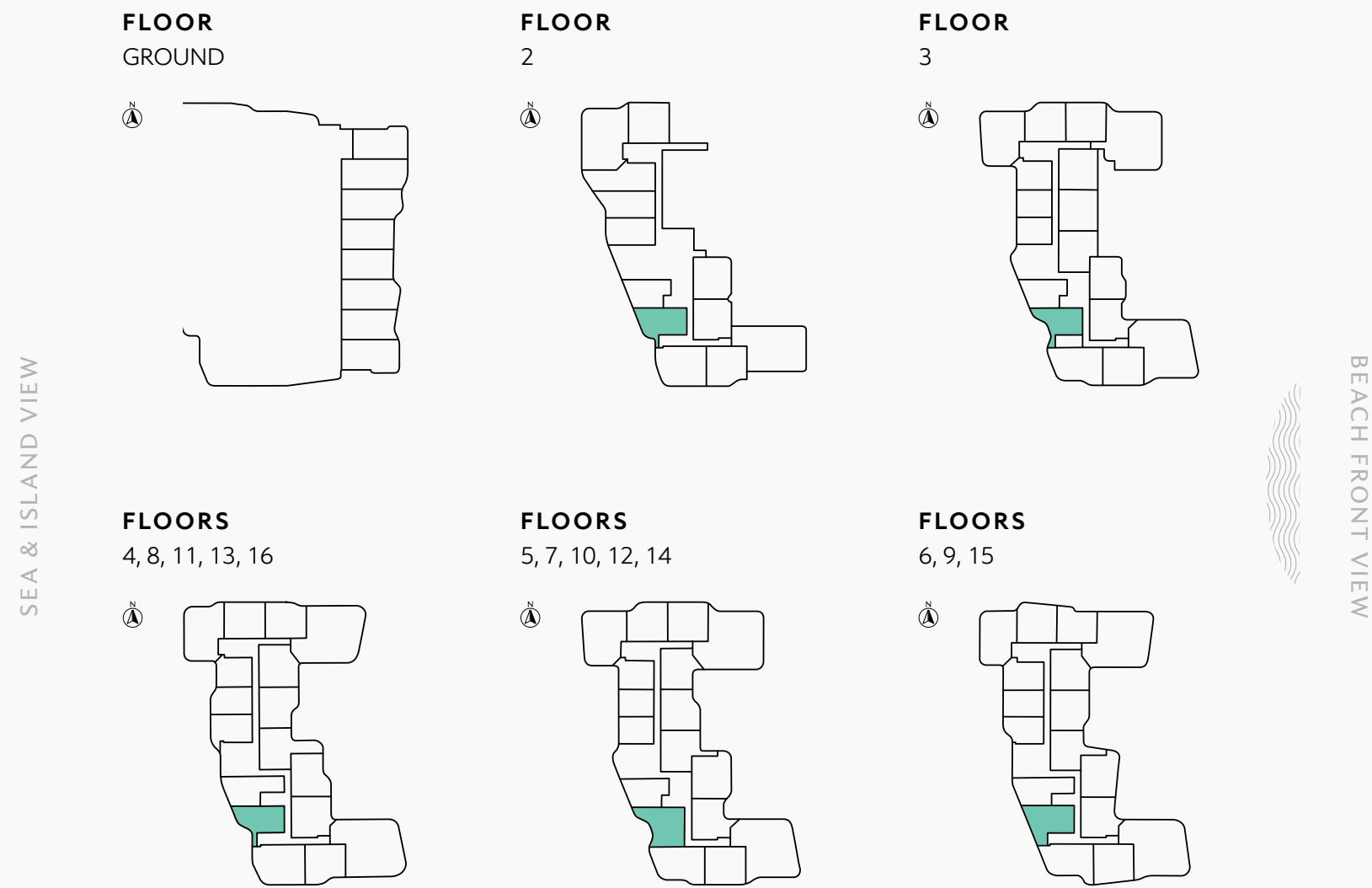
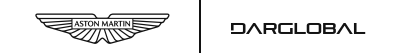
LOWER LEVEL



UPPER LEVEL

# 1 BEDROOM TYPE A

The Astera  
INTERIORS BY ASTON MARTIN

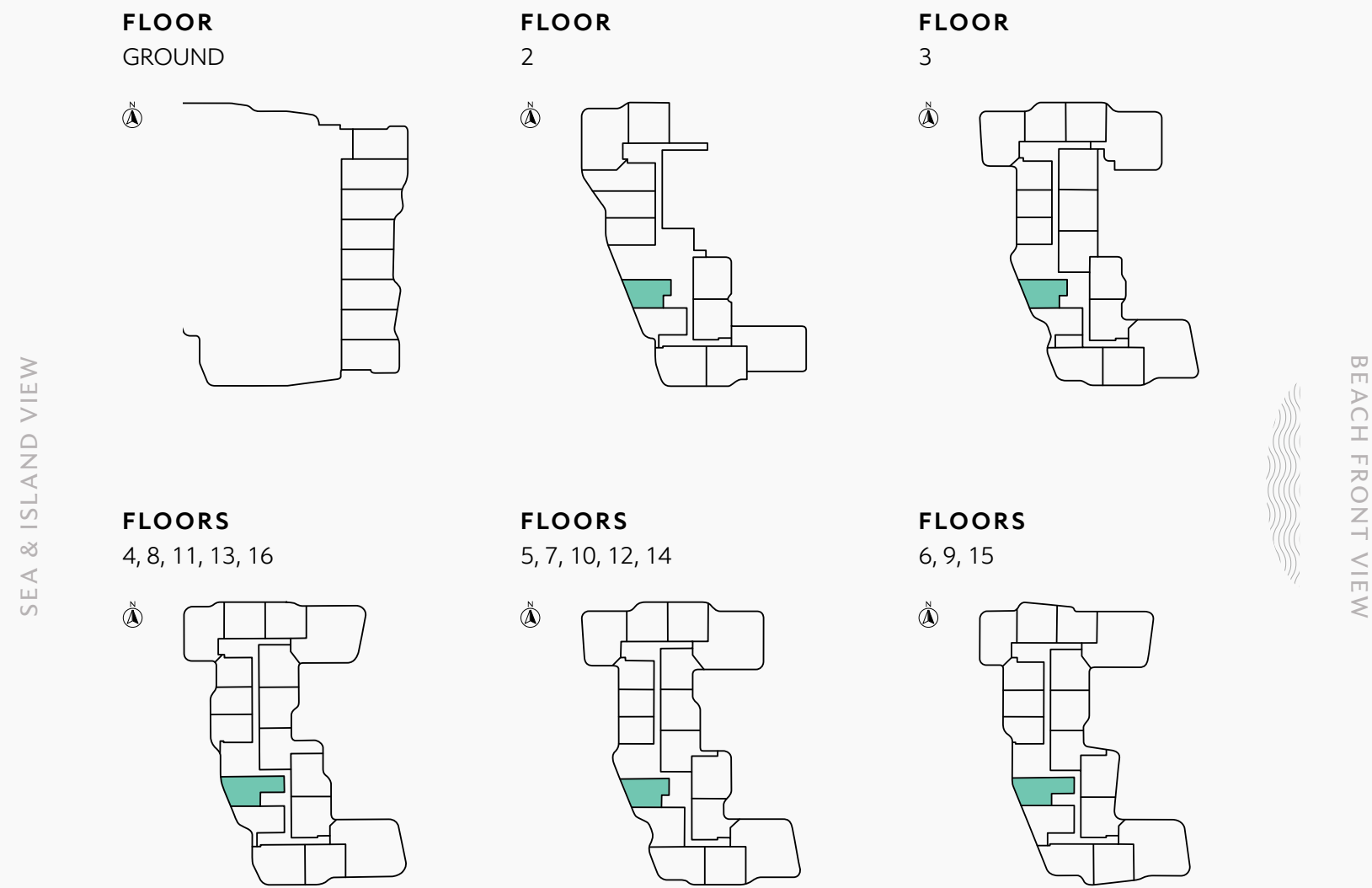
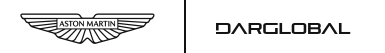


RESIDENCE	SQM	SQFT
Internal Area	48	522
Balcony Area	34 - 52	372 - 564
<b>Total Built up Area</b>	<b>83 - 101</b>	<b>894 - 1,087</b>

Disclaimer: All pictures, plans, layouts, information, data and details included in this brochure are indicative only and may change at any time up to the final 'as built' status in accordance with final designs of the project, regulatory approvals and planning permissions. All accessories and interior finishes such as wallpaper, chandeliers, furniture, electronics, white goods, curtains, hard and soft landscaping, pavements, features, gym, and other elements displayed in the brochure, or between the plot boundary, are not part of the unit and are shown for illustrative purposes only.

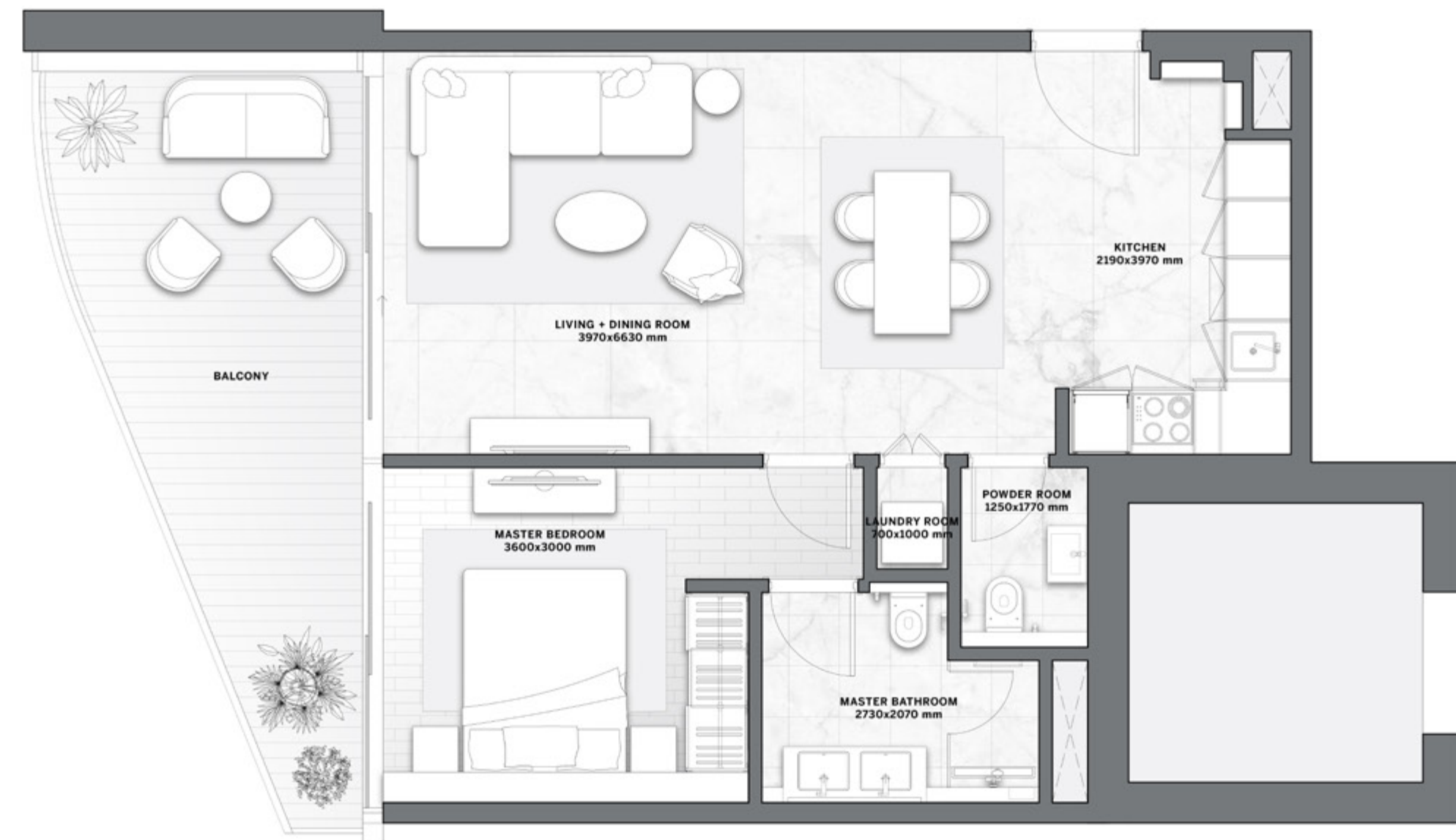
# 1 BEDROOM TYPE B

The Astera  
INTERIORS BY ASTON MARTIN



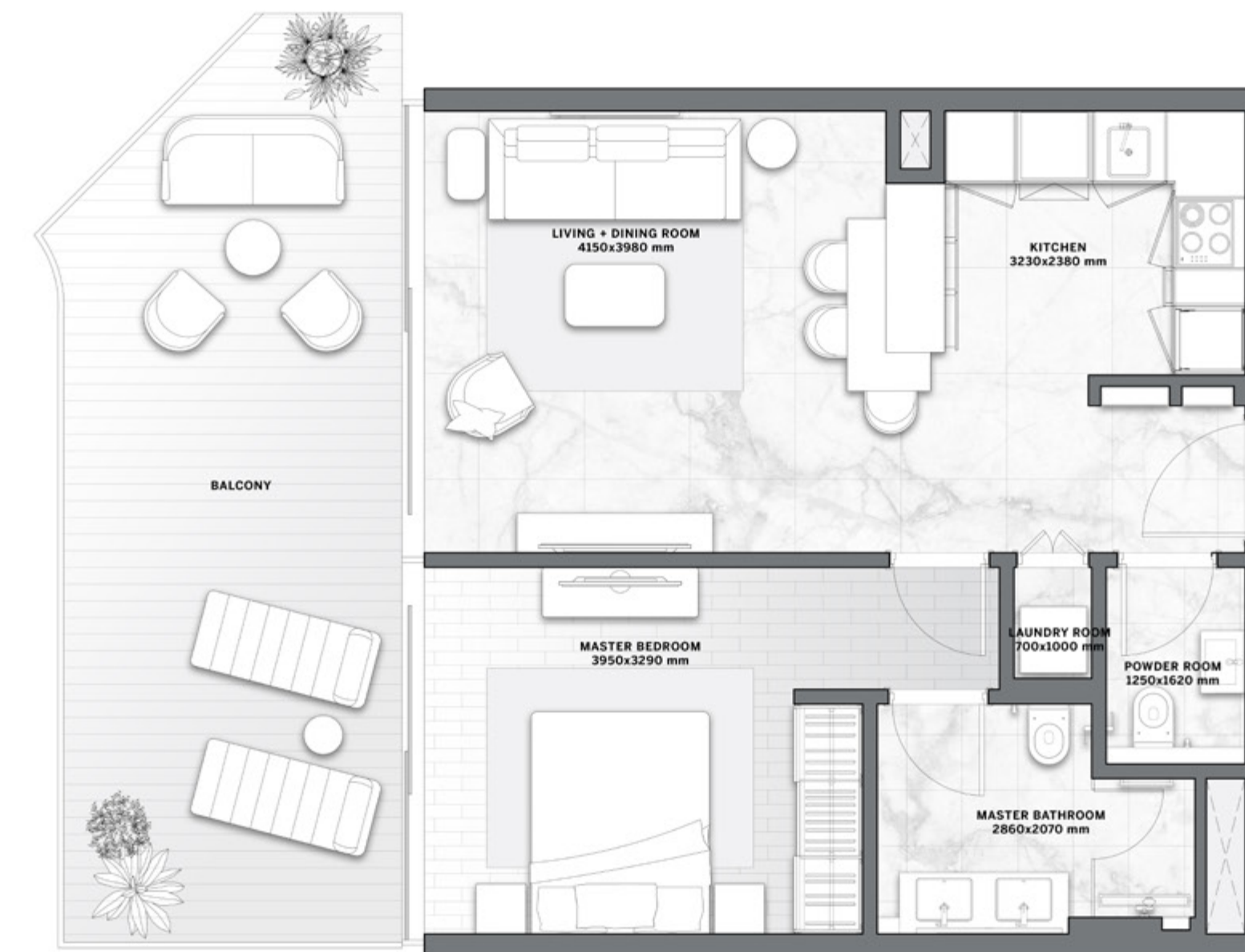
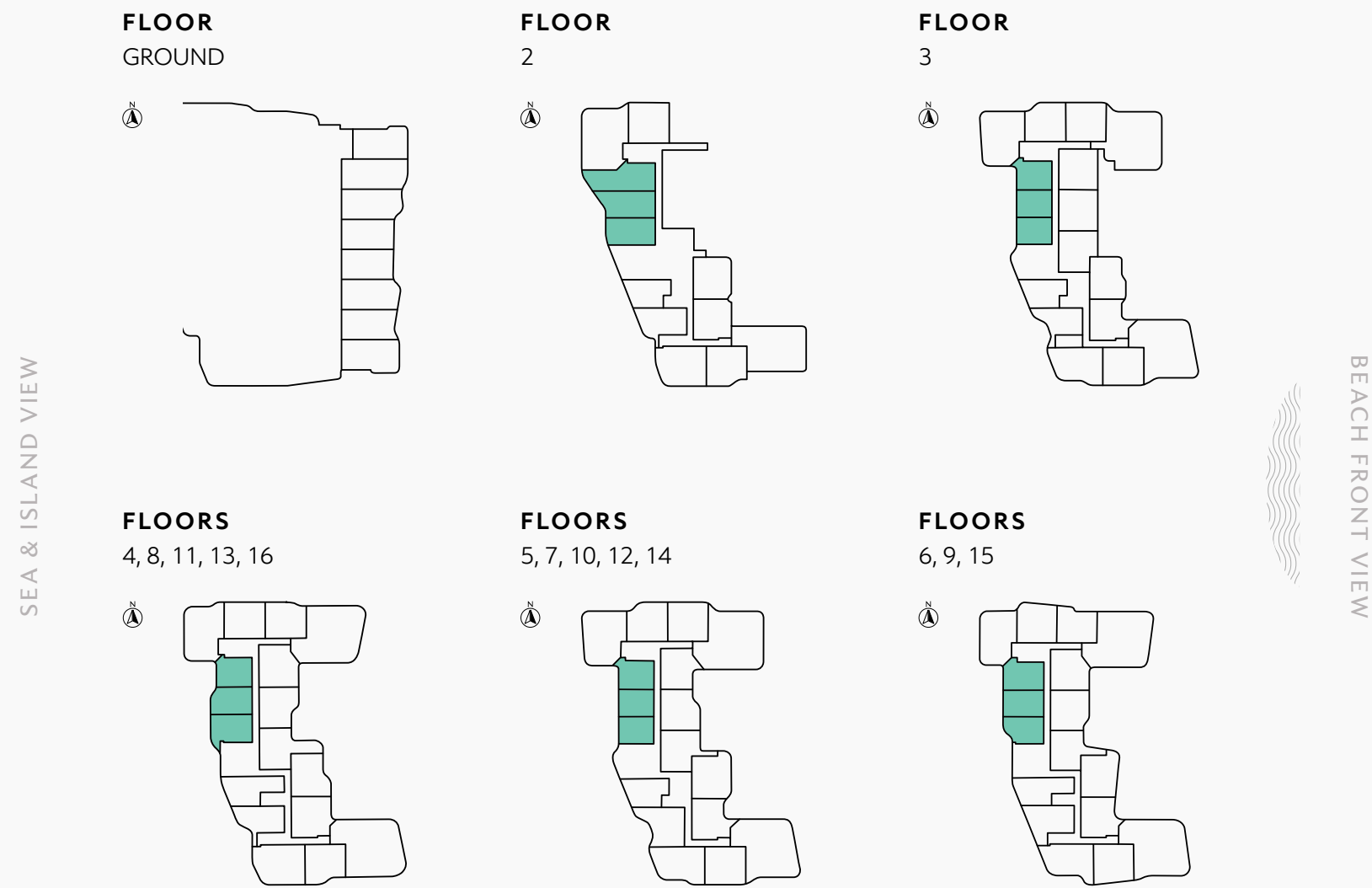
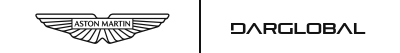
RESIDENCE	SQM	SQFT
Internal Area	58	623
Balcony Area	19 - 20	209 - 214
<b>Total Built up Area</b>	<b>77 - 78</b>	<b>832 - 837</b>

Disclaimer: All pictures, plans, layouts, information, data and details included in this brochure are indicative only and may change at any time up to the final 'as built' status in accordance with final designs of the project, regulatory approvals and planning permissions. All accessories and interior finishes such as wallpaper, chandeliers, furniture, electronics, white goods, curtains, hard and soft landscaping, pavements, features, gym, and other elements displayed in the brochure, or between the plot boundary, are not part of the unit and are shown for illustrative purposes only.



# 1 BEDROOM TYPE C

The Astera  
INTERIORS BY ASTON MARTIN

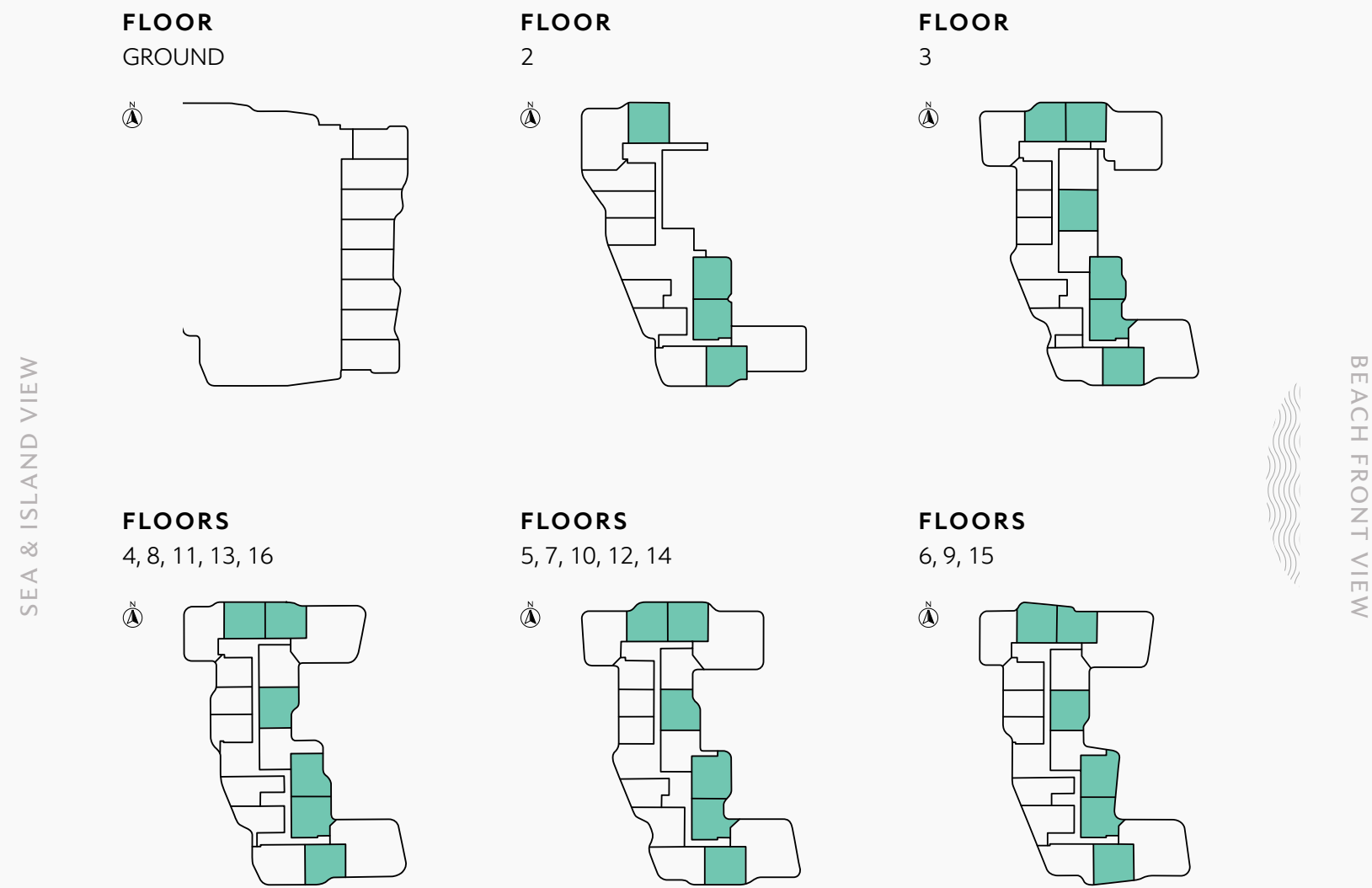
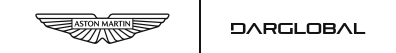


RESIDENCE	SQM	SQFT
Internal Area	52 - 55	562 - 595
Balcony Area	11 - 65	119 - 702
<b>Total Built up Area</b>	<b>63 - 120</b>	<b>682 - 1,297</b>

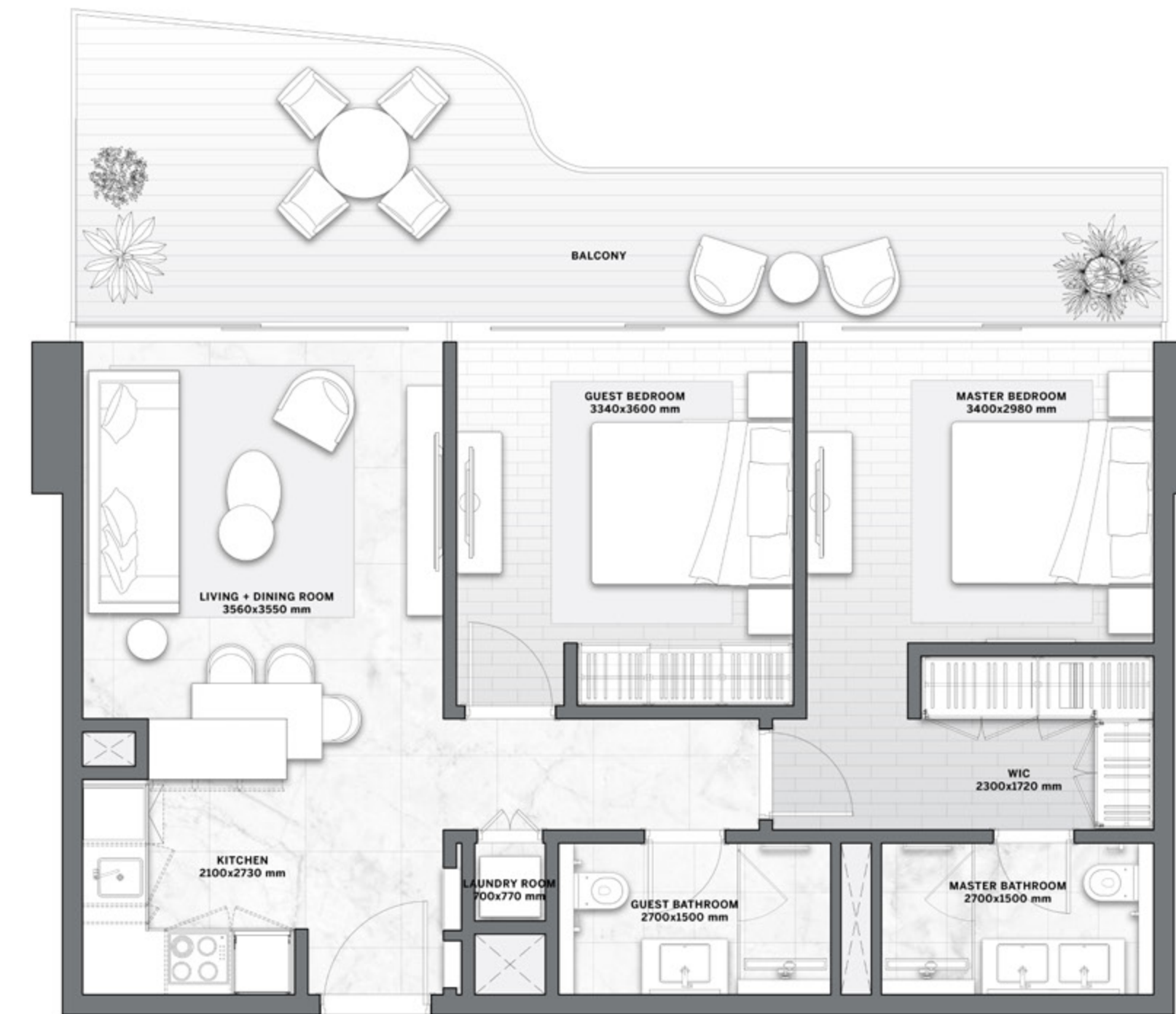
Disclaimer: All pictures, plans, layouts, information, data and details included in this brochure are indicative only and may change at any time up to the final 'as built' status in accordance with final designs of the project, regulatory approvals and planning permissions. All accessories and interior finishes such as wallpaper, chandeliers, furniture, electronics, white goods, curtains, hard and soft landscaping, pavements, features, gym, and other elements displayed in the brochure, or between the plot boundary, are not part of the unit and are shown for illustrative purposes only.

# 2 BEDROOMS TYPE A

The Astera  
INTERIORS BY ASTON MARTIN



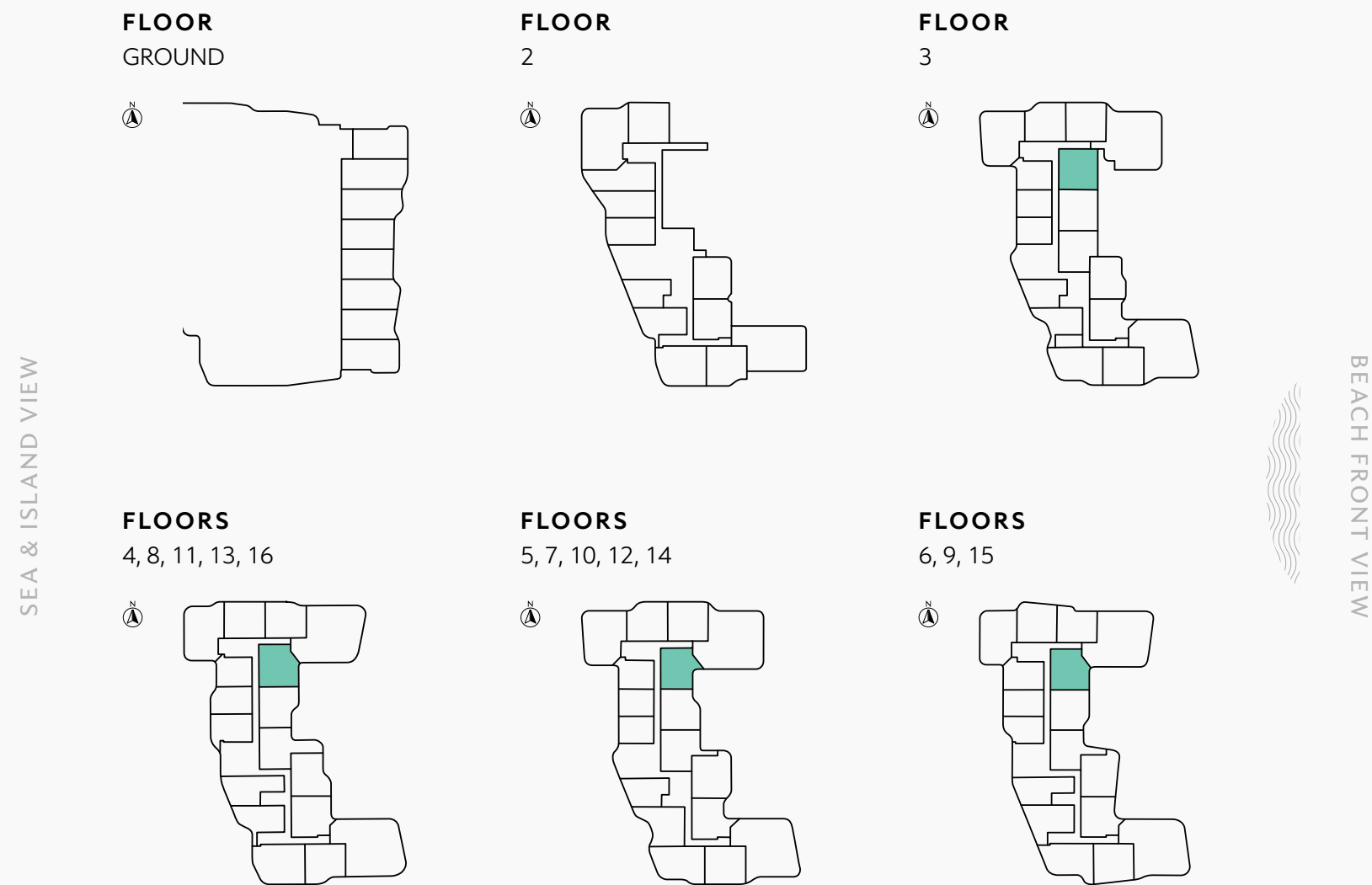
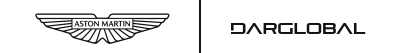
RESIDENCE	SQM	SQFT
Internal Area	68 - 73	733 - 786
Balcony Area	23 - 43	252 - 467
<b>Total Built up Area</b>	<b>93 - 116</b>	<b>1,002 - 1,252</b>



Disclaimer: All pictures, plans, layouts, information, data and details included in this brochure are indicative only and may change at any time up to the final 'as built' status in accordance with final designs of the project, regulatory approvals and planning permissions. All accessories and interior finishes such as wallpaper, chandeliers, furniture, electronics, white goods, curtains, hard and soft landscaping, pavements, features, gym, and other elements displayed in the brochure, or between the plot boundary, are not part of the unit and are shown for illustrative purposes only.

# 2 BEDROOMS TYPE B

The Astera  
INTERIORS BY ASTON MARTIN



RESIDENCE	SQM	SQFT
Internal Area	68	729
Balcony Area	23 - 34	252 - 369
<b>Total Built up Area</b>	<b>91 - 102</b>	<b>981 - 1,098</b>

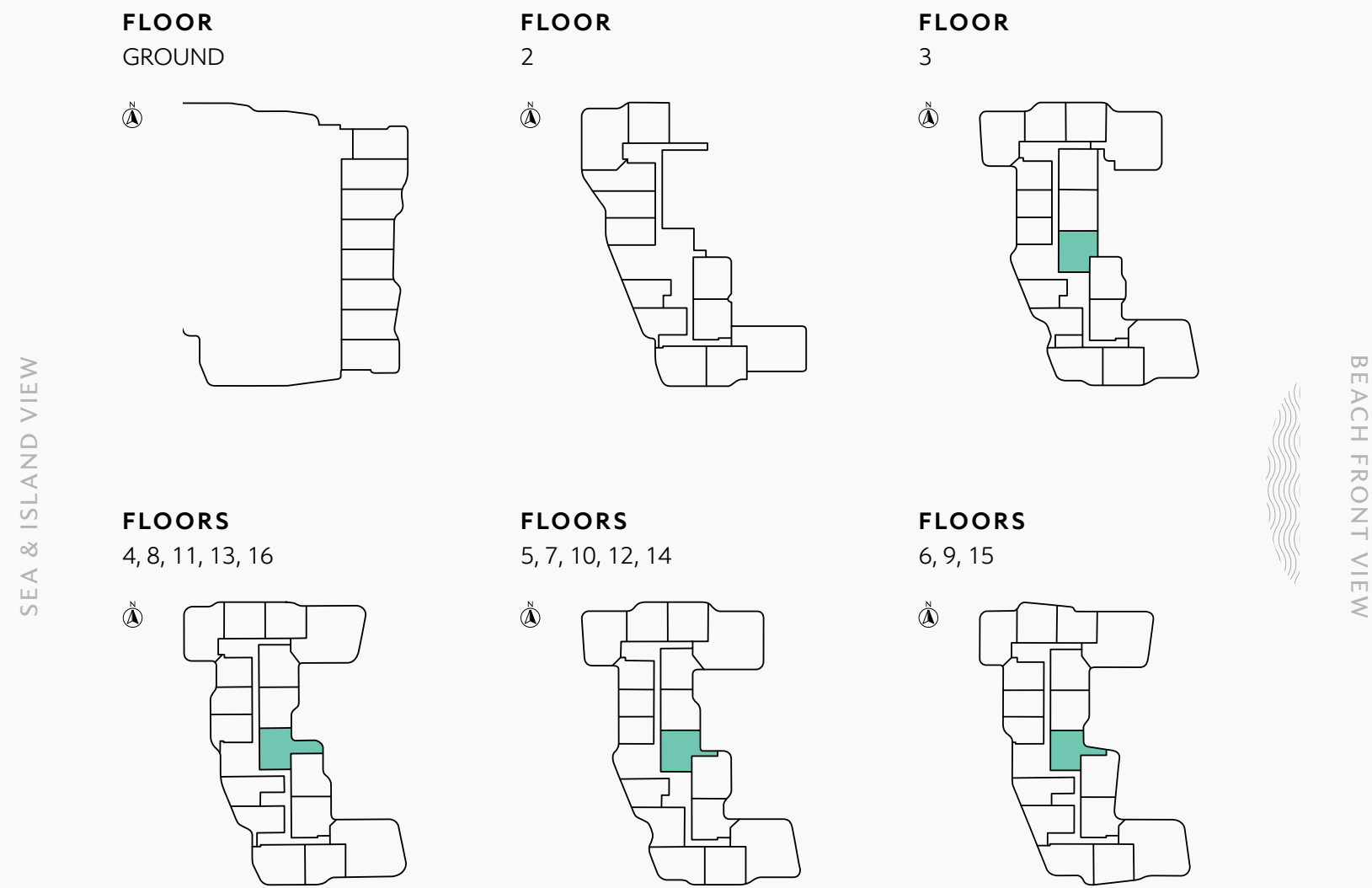
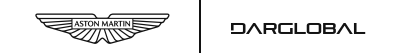


Disclaimer: All pictures, plans, layouts, information, data and details included in this brochure are indicative only and may change at any time up to the final 'as built' status in accordance with final designs of the project, regulatory approvals and planning permissions. All accessories and interior finishes such as wallpaper, chandeliers, furniture, electronics, white goods, curtains, hard and soft landscaping, pavements, features, gym, and other elements displayed in the brochure, or between the plot boundary, are not part of the unit and are shown for illustrative purposes only.



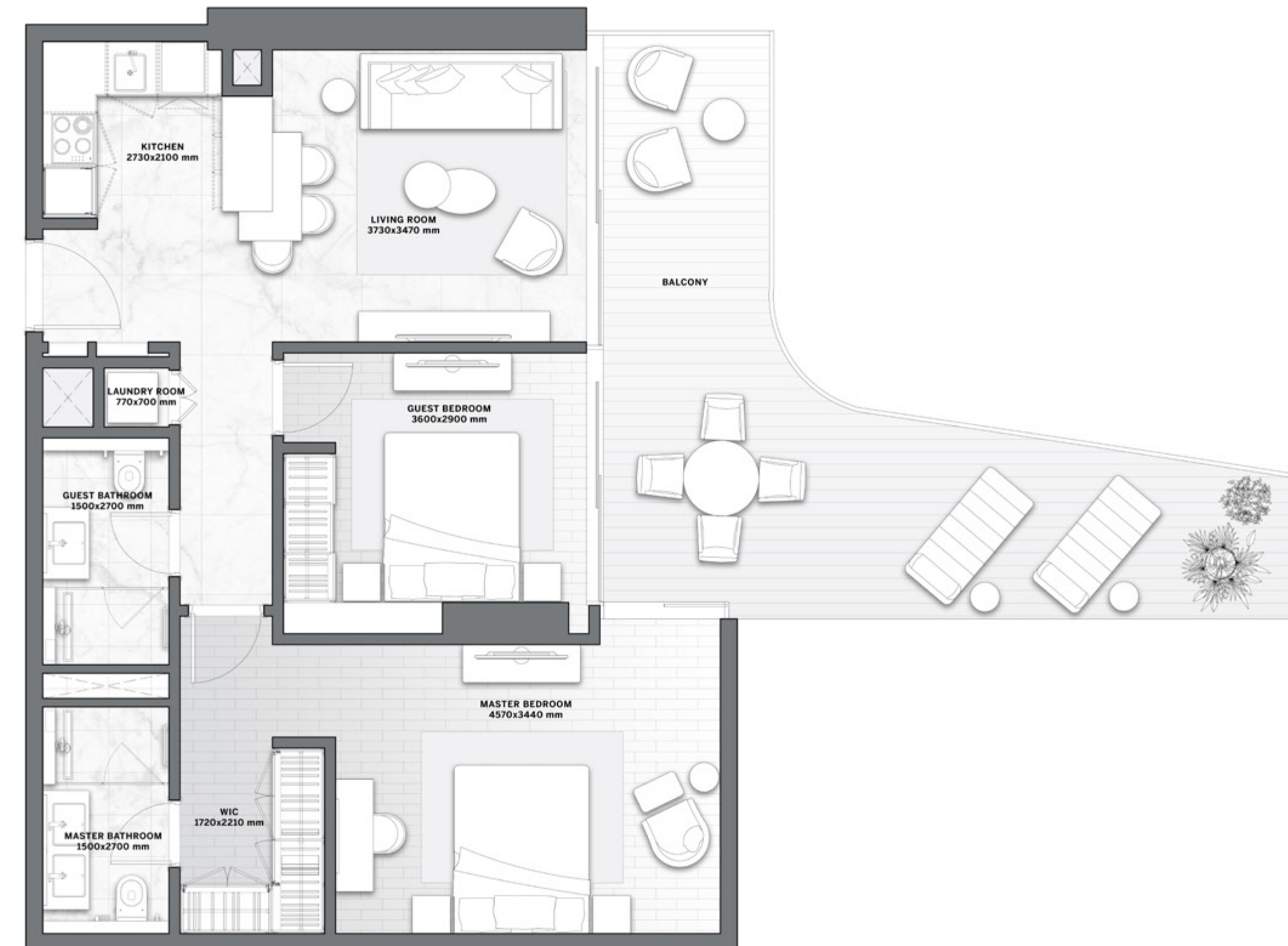
# 2 BEDROOMS TYPE C

The Astera  
INTERIORS BY ASTON MARTIN



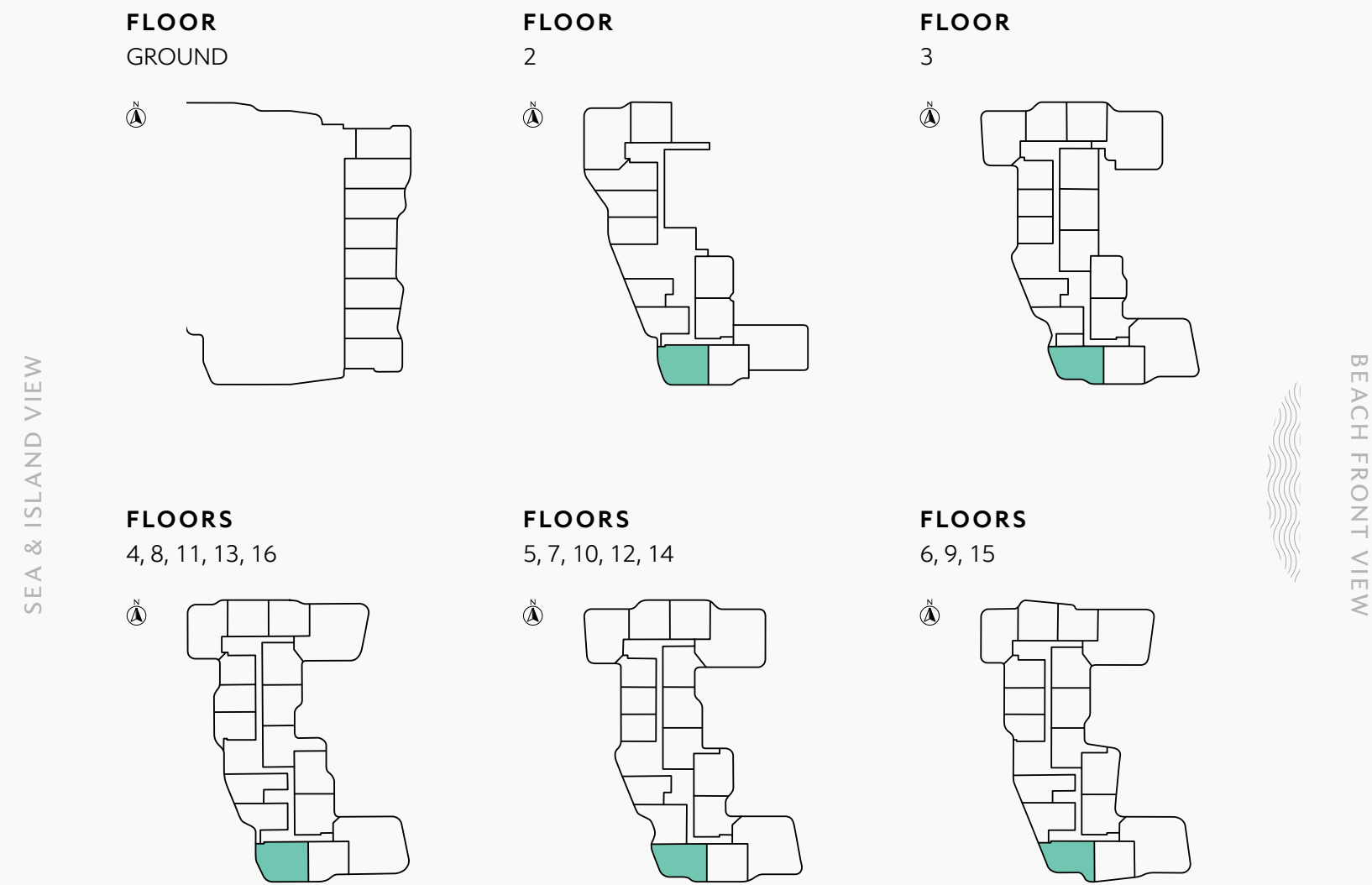
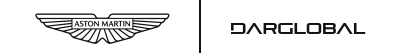
RESIDENCE	SQM	SQFT
Internal Area	68 - 75	736 - 810
Balcony Area	24 - 37	260 - 397
<b>Total Built up Area</b>	<b>99 - 111</b>	<b>1,062 - 1,197</b>

Disclaimer: All pictures, plans, layouts, information, data and details included in this brochure are indicative only and may change at any time up to the final 'as built' status in accordance with final designs of the project, regulatory approvals and planning permissions. All accessories and interior finishes such as wallpaper, chandeliers, furniture, electronics, white goods, curtains, hard and soft landscaping, pavements, features, gym, and other elements displayed in the brochure, or between the plot boundary, are not part of the unit and are shown for illustrative purposes only.



# 2 BEDROOMS TYPE D

The Astera  
INTERIORS BY ASTON MARTIN

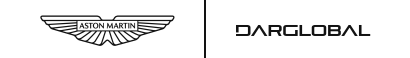


RESIDENCE	SQM	SQFT
Internal Area	73	787
Balcony Area	42 - 56	459 - 607
<b>Total Built up Area</b>	<b>116 - 129</b>	<b>1,246 - 1,394</b>

Disclaimer: All pictures, plans, layouts, information, data and details included in this brochure are indicative only and may change at any time up to the final 'as built' status in accordance with final designs of the project, regulatory approvals and planning permissions. All accessories and interior finishes such as wallpaper, chandeliers, furniture, electronics, white goods, curtains, hard and soft landscaping, pavements, features, gym, and other elements displayed in the brochure, or between the plot boundary, are not part of the unit and are shown for illustrative purposes only.

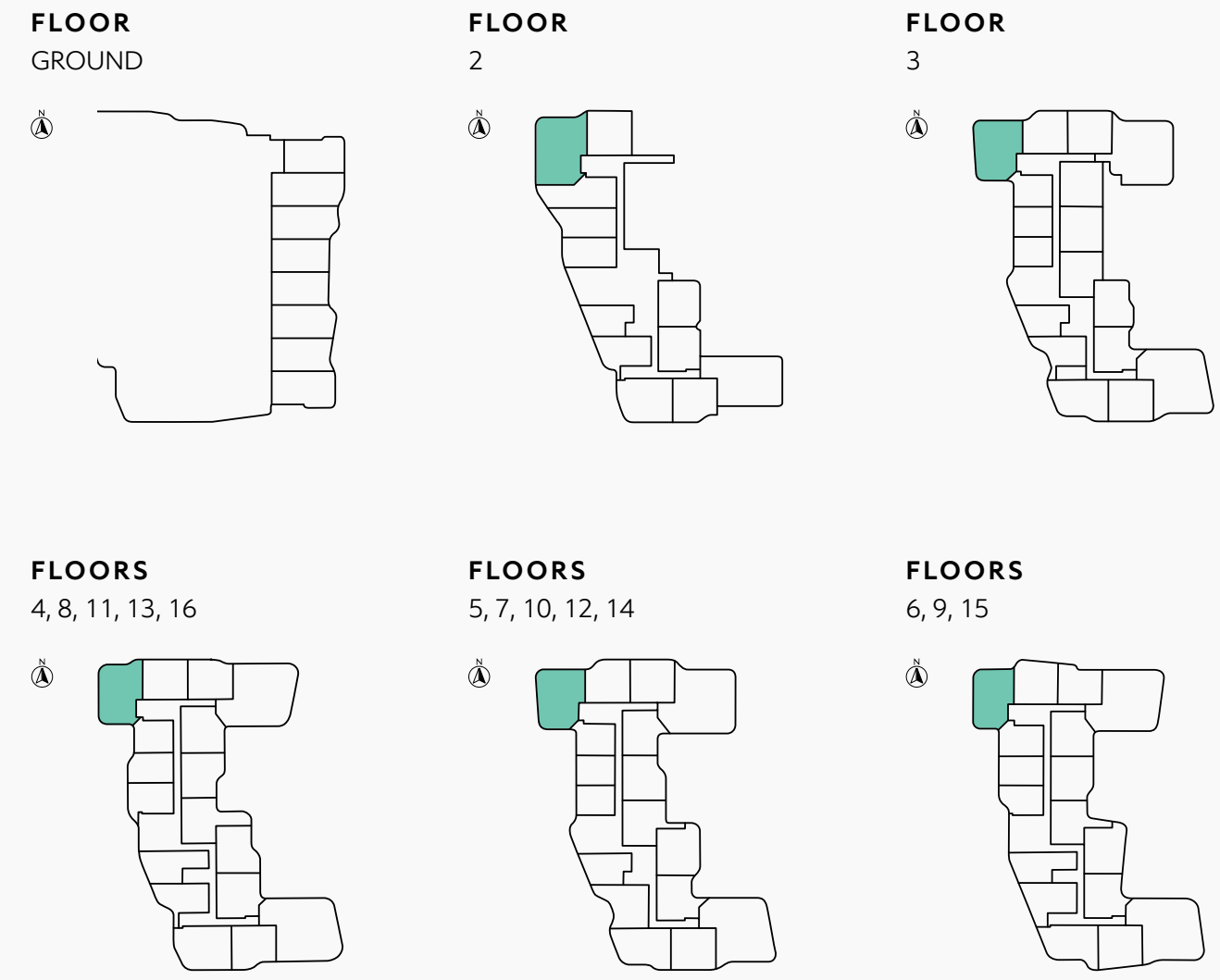
# 2 BEDROOMS TYPE E

The Astera  
INTERIORS BY ASTON MARTIN



SEA & ISLAND VIEW

BEACH FRONT VIEW



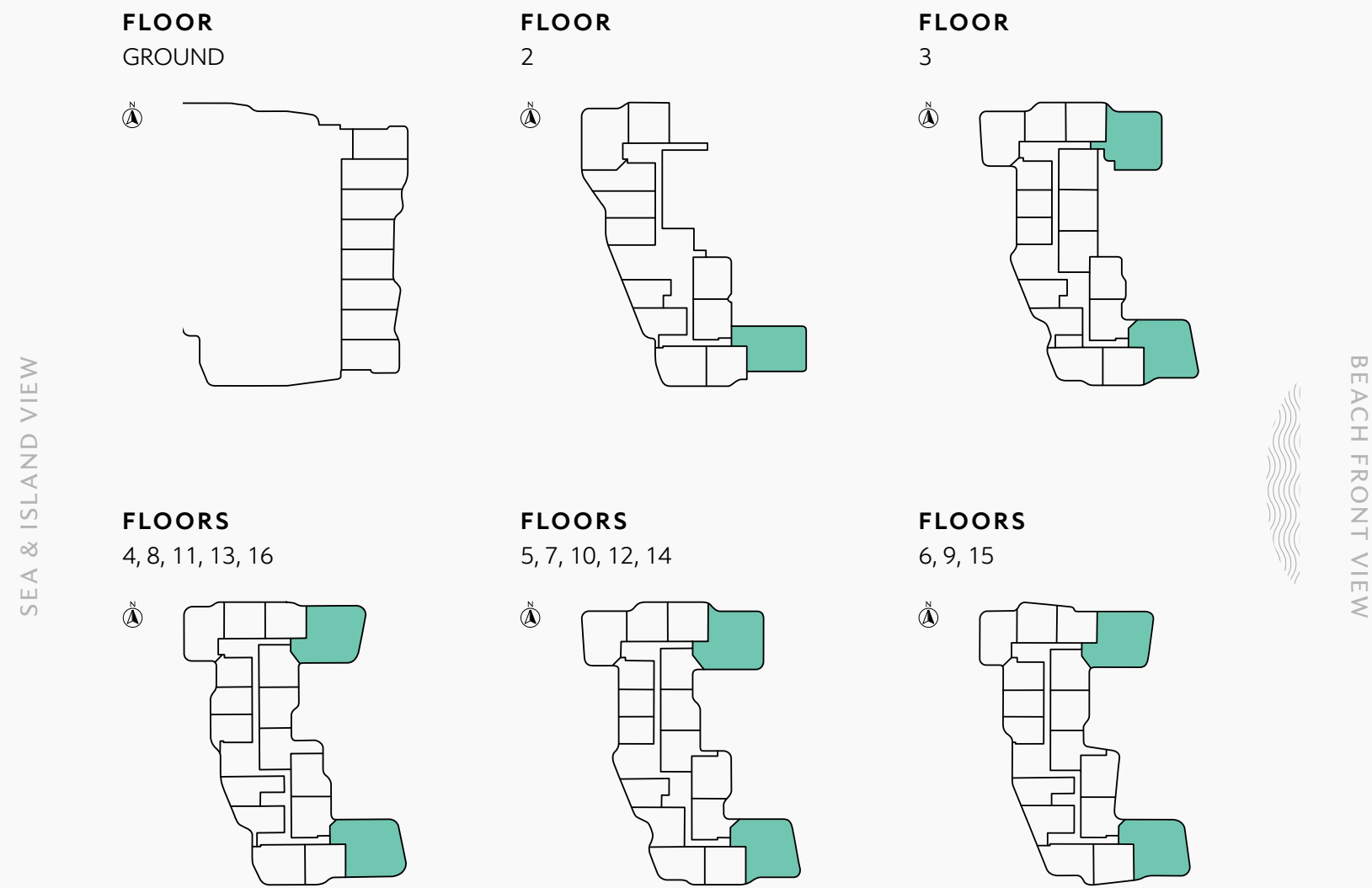
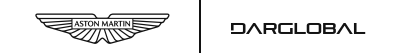
RESIDENCE	SQM	SQFT
Internal Area	76	820
Balcony Area	50 - 61	539 - 659
<b>Total Built up Area</b>	<b>126 - 182</b>	<b>1,359 - 1,479</b>

Disclaimer: All pictures, plans, layouts, information, data and details included in this brochure are indicative only and may change at any time up to the final 'as built' status in accordance with final designs of the project, regulatory approvals and planning permissions. All accessories and interior finishes such as wallpaper, chandeliers, furniture, electronics, white goods, curtains, hard and soft landscaping, pavements, features, gym, and other elements displayed in the brochure, or between the plot boundary, are not part of the unit and are shown for illustrative purposes only.



# 3 BEDROOMS TYPE A

The Astera  
INTERIORS BY ASTON MARTIN



RESIDENCE	SQM	SQFT
Internal Area	136-140	1,466 - 1,508
Balcony Area	89 - 117	961 - 1,264
<b>Total Built up Area</b>	<b>227 - 254</b>	<b>2,443 - 2,730</b>

Disclaimer: All pictures, plans, layouts, information, data and details included in this brochure are indicative only and may change at any time up to the final 'as built' status in accordance with final designs of the project, regulatory approvals and planning permissions. All accessories and interior finishes such as wallpaper, chandeliers, furniture, electronics, white goods, curtains, hard and soft landscaping, pavements, features, gym, and other elements displayed in the brochure, or between the plot boundary, are not part of the unit and are shown for illustrative purposes only.



DAR GLOBAL PLC

**DARGLOBAL**

## LISTED ON THE LONDON STOCK EXCHANGE

Established in 2017 to upend the global luxury real estate market, DarGlobal combines experience and innovation to deliver the highest quality properties. World-class architects curate DarGlobal's homes that are modelled by renowned design icons; each DarGlobal home is build with the highest quality materials and maintained by experts within the field.

DarGlobal believes there is no better investment than an investment in luxury and takes pride in choosing the best-in-class locations and properties to provide lucrative investment opportunities for a distinct clientele.

## BUILDING ON THE LEGACY OF THE LARGEST REAL ESTATE COMPANY IN THE REGION

**09**

offices in different  
cities worldwide

**30**

years of  
experience

**15,000+**

residential units  
delivered

**8.9Bn\***

USD in  
assets

**500,000sqm**

of commercial space

\*Combined assets of DarGlobal & Dar Al Arkan as of March 31, 2024

## OUR OFFICES

# DARGLOBAL

### DUBAI, UAE

Jumeirah Emirates Towers  
30<sup>th</sup> Floor, Sheikh Zayed Road,  
PO Box 2523, Dubai,  
United Arab Emirates  
T +971 4 247 8999

### MARBELLA, SPAIN

Marbella Club Golden Mile,  
Av. Bulevar Principe Alfonso  
de Hohenlohe, Marbella 29602  
Málaga, Spain  
T +34 952 68 76 80

### LONDON, UK

50 Hans Crescent,  
Knightsbridge, London,  
SW1X 0NA,  
United Kingdom  
T +44 7875 495156

### DOHA, QATAR

Malibu Building,  
Lusail Entertainment City,  
Doha, Qatar  
T +974 800 3536

### MUSCAT, OMAN

Royal Opera House Muscat  
Shatti Al Qurum,  
Oman, Muscat  
T +968 2270 2777

---

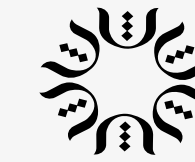
For more information on The Astera, Interiors by Aston Martin  
please call +971 4562 9616 (UAE)

You can visit our website at [darglobal.co.uk](https://darglobal.co.uk)  
or via our social media platforms



**DARGLOBAL**

Joint Development Partner



ABOUT **AARVEES**

---

Aarvees, established in 1994, has been a pioneer in transforming Dubai's skyline. Specializing in real estate development, entertainment, logistics, and hospitality, Aarvees is committed to delivering world-class projects that enhance the quality of life and foster sustainable growth. The company integrates innovative solutions and maintains the highest standards of integrity and customer satisfaction. Through strategic partnerships and a visionary approach, Aarvees continuously shapes the future of the UAE, reflecting its dedication to excellence and community development.







DARGLOBAL

Joint Development Partner



ARVEES

[DARGLOBAL.CO.UK](http://DARGLOBAL.CO.UK)

# THANKS FOR WATCHING

CONTACT US FOR MORE INFORMATION