



YOU ARE A GUIDE TO THE  
WORLD OF LUXURY

بن غاطي ايفوري  
BINGHÄTTI IVORY



In the heart of Dubai's vibrant real estate landscape, Binghatti stands as a testament to architectural ingenuity and unwavering commitment to excellence. As a distinguished Emirati property brand, Binghatti has carved a niche for itself by creating iconic landmarks that redefine the skyline. The brand's diverse portfolio caters to a wide spectrum of discerning clientele, offering projects that range from accessible elegance to ultra-high-end luxury. Binghatti's signature design DNA, meticulously woven into each development, sets it apart on the global stage. With over 60 projects valued at more than AED 4.0 billion, Binghatti is a leading privately held developer in the UAE. The company's impressive track record, including the successful delivery of 20,000 units prior to 2024, underscores its dedication to crafting exceptional living spaces. Through groundbreaking collaborations with prestigious luxury brands such as BUGATTI, Mercedes-Benz, and Jacob & Co., Binghatti continues to push boundaries and set new benchmarks in the world of branded real estate.

*On the plains of dreams...*

*A place reveals itself somewhere between rarity and beauty...*

*Where elegance finds its rarest expression.*

*Ivory, a sanctuary formed from threads of timelessness and artistry...*

*A place where the essence of scarcity becomes the revelry of taste.*

*Here, the walls utter of journeys...*

*Where charm and tradition unfold in the allure of modernity.*

*Every space within Ivory is the key to an intrepid life....*

*Where past discovers present.*

*Equally, every detail echoes naturally.*

*A testament to a life lived in grace and timelessness.*

*Ivory is an ode to the collector, the curator, the pioneering ones...*

*Who seek out beauty in its most cherished form.*

*A place to awaken to the elegant, the extraordinary...*

*A place to feel time stand still...*

*Ivory : Discover in awe that which is most sought-after.*

# *Profoundly Rare Exclusivity*

In the vibrant heart of Dubai, a sanctuary awaits. Ivory offers a realm of curated living, meticulously designed to inspire and elevate.



*Elegance's  
Rarest Expression*

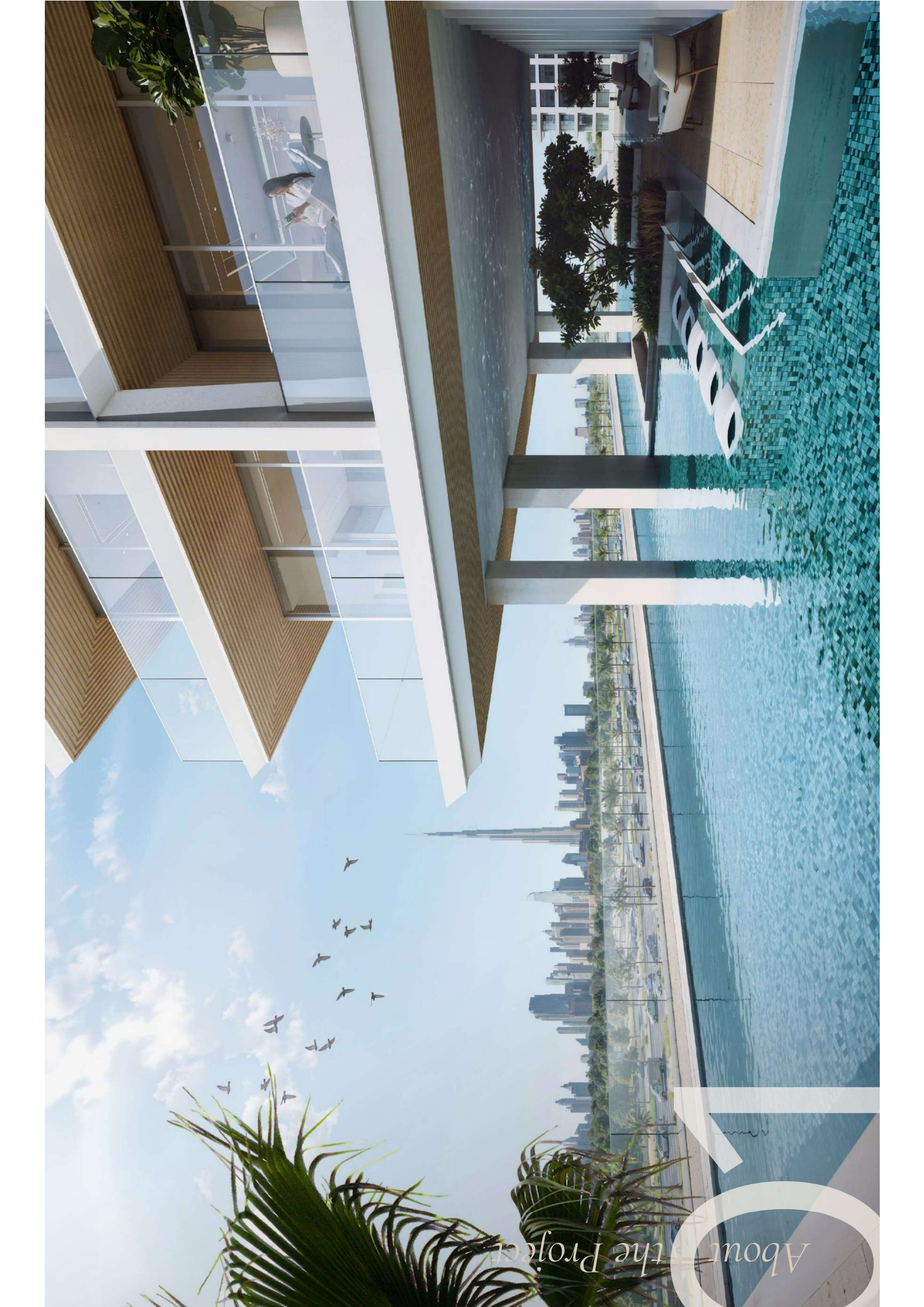




# 01 About the Project

# 02 Design Details

# 03 Floor Plans



About the Project



ABOUT THE PROJECTS



ABOUT THE PROJECTS

# *Binghatti Ivory*

Architectural elements, each echoing journeys and discoveries, create spaces of harmonious revelation and refined beauty. Ivory's façade, a testament to modern elegance, seamlessly blends enduring materials into a contemporary form.



## *Boundless in Al Jaddaf*

Ivory's prime location in Al Jaddaf places you at the crossroads of Dubai's vibrant energy and serene artistry. Connected to the city's pulse yet offering a tranquil escape. Imagine awakening to panoramic views of the iconic Burj Khalifa, the majestic Dubai Frame, and the ever-evolving Al Khail Road, each a testament to boundless ambition and human ingenuity.



# *Inspiration Forged from Intrepid Exploration*

Ivory embodies a vision of curated living, a home where scarcity transforms into celebration. It's a testament to a life lived in grace and timeless pursuit.



ABOUT THE PROJECTS

ABOUT THE PROJECTS



## *Project Facts*

**PROPERTY TYPE**  
Residential & Retail

**PLOT AREA**  
3088.32 SQ.M / 33242.00 SQFT

**DESCRIPTION**  
2B + G + 3P + 20 Residential Floors + Roof

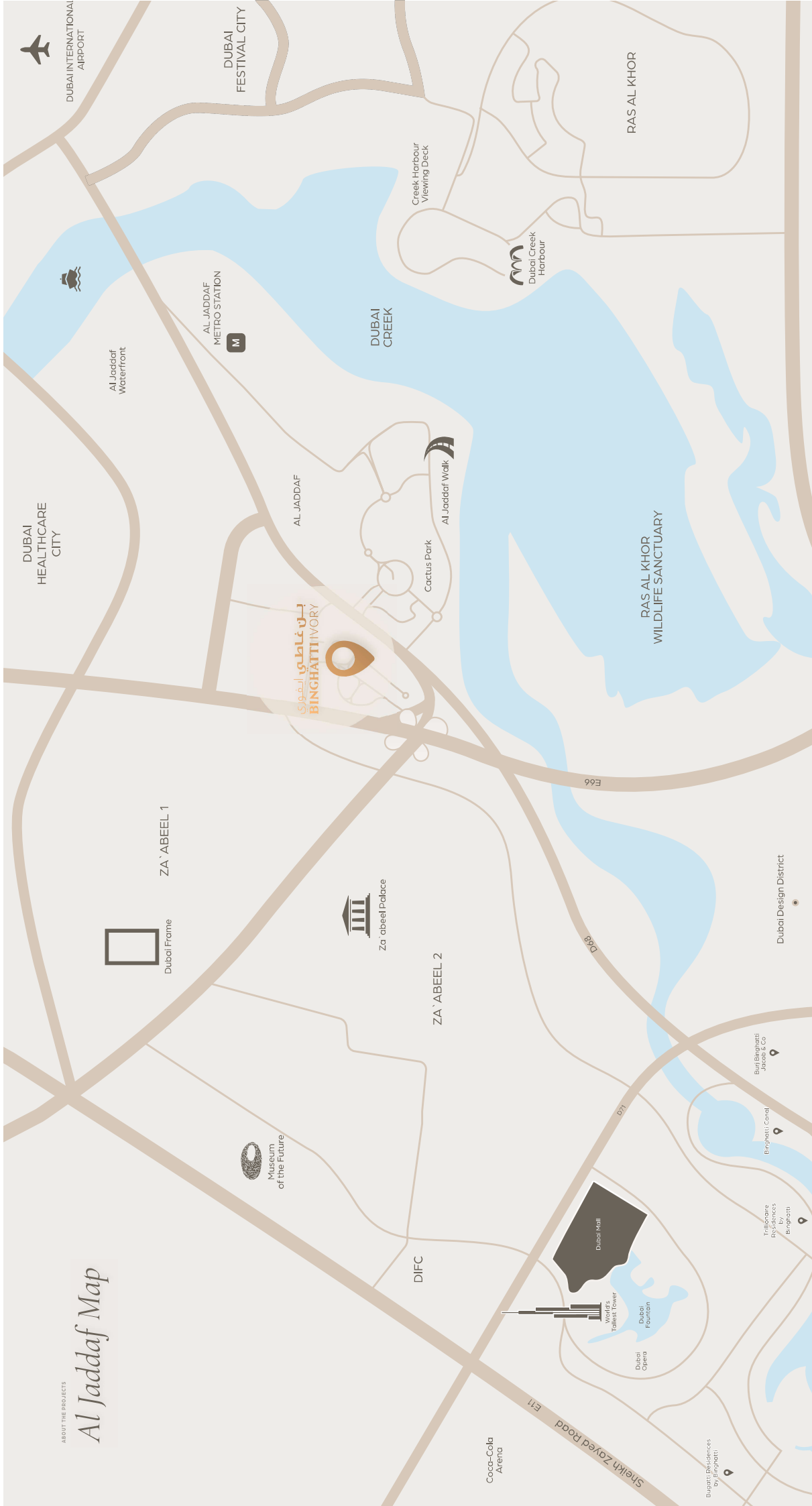
**NUMBER OF UNITS**  
Studio Apartment – 76  
1 Bedroom Apartment – 177  
2 Bedroom Apartment – 78

**TOTAL UNITS**  
Residential units – 331  
Shop (Ground Floor) – 01



ABOUT THE PROJECTS

# Al Jaddaf Map



Burj Khalifa & Downtown Dubai  
3-5 MINUTES



Dubai Opera  
3-5 MINUTES



The Dubai Mall  
3-5 MINUTES



Dubai Design District  
5-8 MINUTES



Meydan Racecourse  
5-10 MINUTES



Ras Al Khor Wildlife Sanctuary  
5-10 MINUTES



Museum of the Future  
4-6 MINUTES



Dubai Frame  
4-6 MINUTES



Al Jaddaf Walk  
2-3 MINUTES

Coca-Cola Arena

Dubai Opera

Dubai Fountain

World's Tallest Tower

Dubai Mall

Trillionaire Residences  
Binghatti

Binghatti Canal

Burj Binghatti  
Jacobs & Co

Dubai Design District

D98

D97

E66

DIFC

ZA' ABEEL 2

Za'abeel Palace

ZA' ABEEL 1

Dubai Frame

Museum of the Future

بني عابد  
BINGHATTI IVORY

Cactus Park

Al Jaddaf Walk

AL JADDAF

AL JADDAF METRO STATION

Al Jaddaf Waterfront

Creek Harbour Viewing Deck

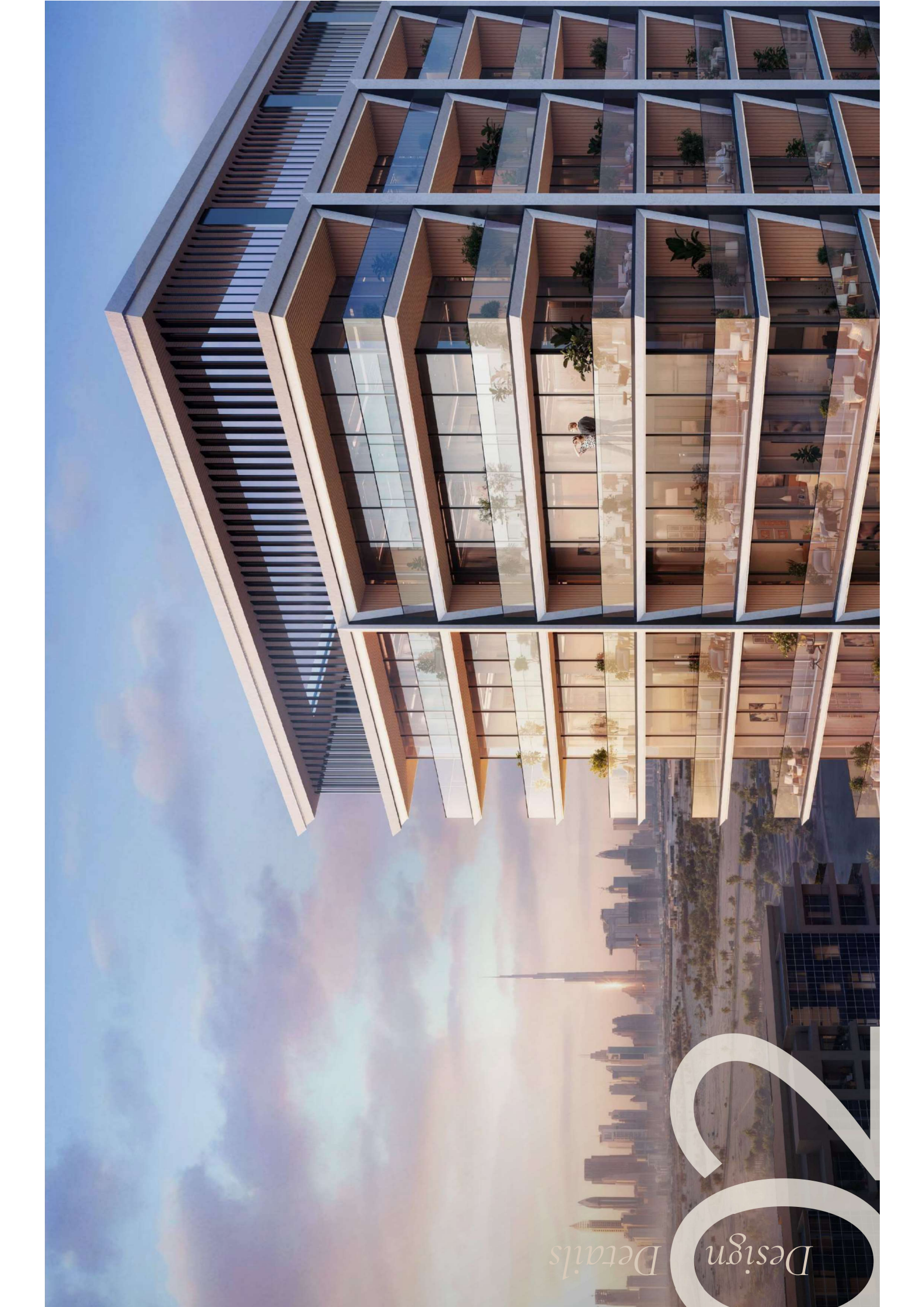
Dubai Creek Harbour

RAS AL KHOR

DUBAI FESTIVAL CITY

DUBAI INTERNATIONAL AIRPORT





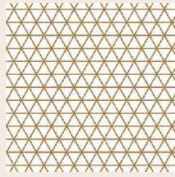
*Design*

*Details*



# Material Lists

## Lobby Materials



Metal Mesh



Travertine



Copper





DESIGN BY  
BORGHATTI

DESIGN DETAILS

DESIGN DETAILS



DESIGN DETAILS

DESIGN DETAILS



DESIGN DETAILS

DESIGN DETAILS

# Material Lists

## Apartment Materials



Wood Porcelain



Brushed Brass



Mirror



Tan Oak Wood



Black Tinted Glass







# Material Lists

## Bathroom Materials



Exotic Green Porcelain



Tan Oak Wood



Travertine

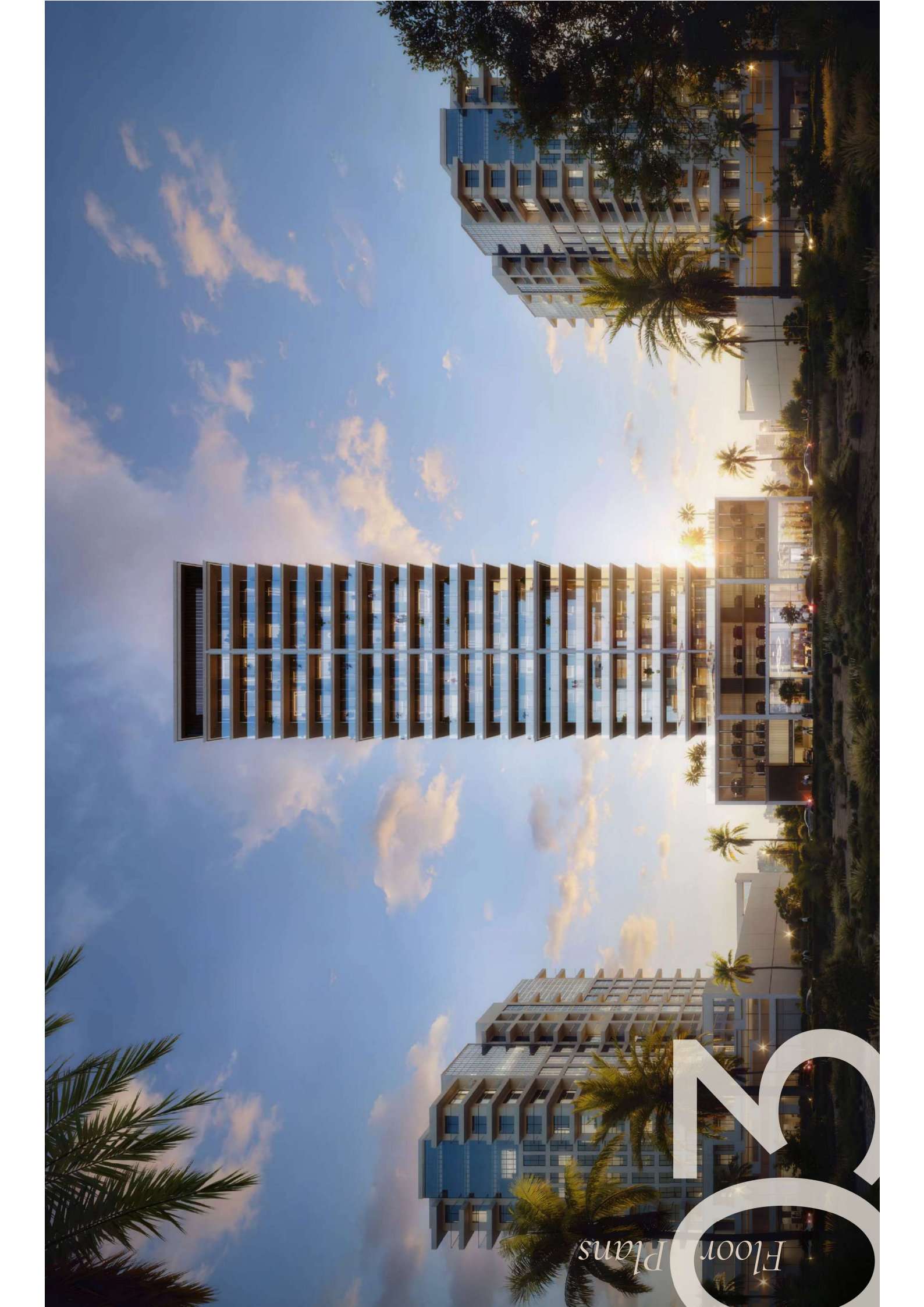






DESIGN DETAILS

DESIGN DETAILS



# 20

Floor Plans

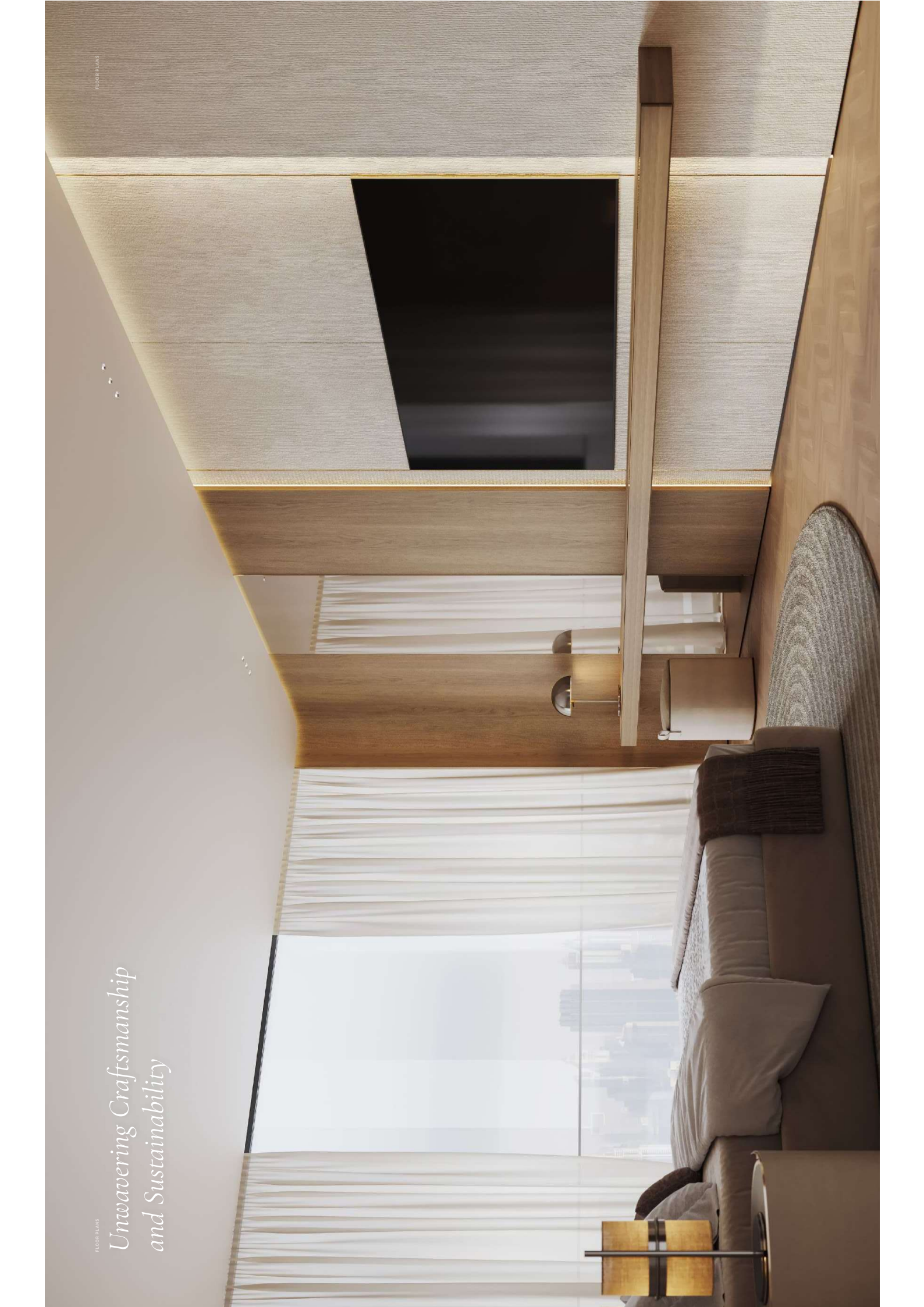
*A Harbour for the  
Discerning Explorer*



FLOOR PLANS

*Unwavering Craftsmanship  
and Sustainability*

FLOOR PLANS



*A Meticulous  
Material Palette*

FLOOR PLANS



*Reimagined for the  
Intrepid Spirit*



FLOOR PLANS

FLOOR PLANS

*Embark on a Journey of  
Timeless Discovery*



# THANKS FOR WATCHING

CONTACT US FOR MORE INFORMATION