

YOU ARE A GUIDE TO THE
WORLD OF LUXURY



RIVIERA
RÊVE



REVEL IN REFINEMENT



YOUR DREAMS,



IMAGINED.

JUST A STONE'S THROW FROM DUBAI'S BEATING HEART, A SECLUDED OASIS AWAITS. A LUXURIOUS RESIDENTIAL COMMUNITY WHERE LIFE FEELS EXPANSIVE, LIMITLESS, INFINITE. IT'S IDYLIC WATERFRONT LIVING AT ITS BEST. NOW YOURS TO CALL HOME.

Welcome to Azizi Riviera – one of Dubai’s most luxurious destinations. Where you can wake up to breathtaking crystal lagoon views, spend your days wandering along the French-Riviera-inspired boulevard and mingle with like-minded residents – those that appreciate the finer things in life. Featuring three residential towers, a 5-star hotel and an executive business centre, this destination truly offers it all.

REVEL ALONG THE RIVIERA



Bringing you the best of beachside living, leisure and entertainment, Riviera Rêve complements your already distinguished lifestyle. Architecturally inspired by the movement of water across the lagoon, the three towers have been built with solar panels and vertical greenery for greater sustainability and air purity. A development as unique and rare as you.

DESIGNED TO ENRICH LIVES





Enjoy spacious, masterfully crafted apartments with incredible lagoon views, unparalleled amenities and year-round entertainment - all within proximity to Dubai's most iconic landmarks. A casual stroll along the boulevard, a splash in the crystal lagoon, a midday espresso, or a fine-dining feast along the waterfront. It's the life you've always dreamed of.

A ONE-OF-A-KIND DESTINATION



AN ARRIVAL
LIKE NO OTHER

Surround yourself with timeless style, service and sophistication at Riviera Rêve. With separate entrances for each tower, you can enjoy a designated drop-off area as well as direct access to a walkway connecting you to the retail outlets and crystal lagoon. The space also features a 7ft wall cascading from the rooftop infinity pool.

Step into the main lobby and experience a first impression like no other. With floor-to-ceiling glass windows, Italian marbled flooring and an incredible chandelier towering from the ceiling - modern-day elegance has never been so memorable.

AN ELEVATED ENTRANCE



A neutral, earthy colour palette evokes a sense of down-to-earth sophistication and ease – purposefully designed to connect you to nature, every day. With palm trees, local fauna and fresh flowers welcoming you home, this lobby is a breath of fresh air.

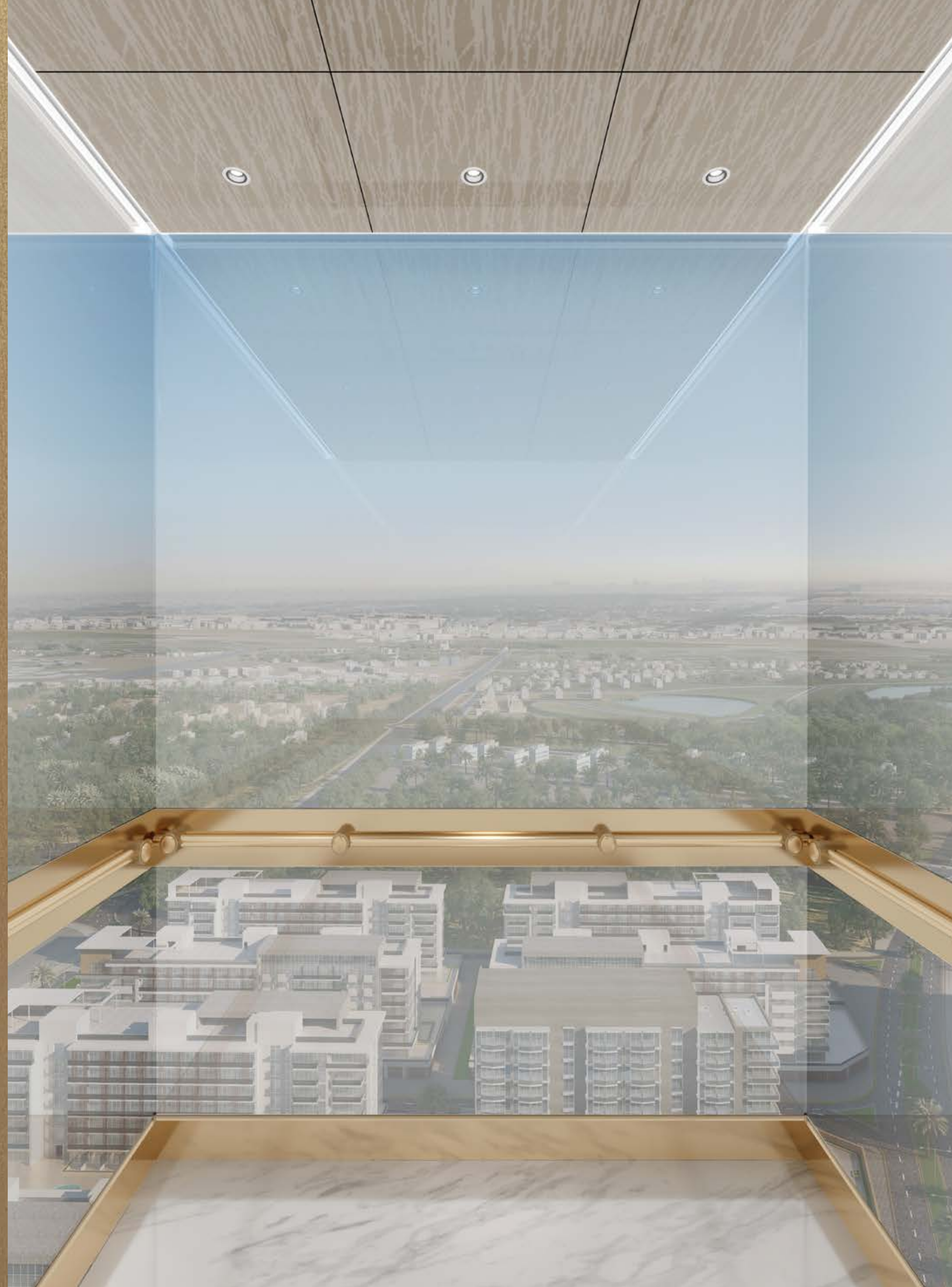
A SANCTUARY OF SECLUSION

AZIZI



REACH NEW HEIGHTS

Soar straight to your apartment in our luxurious all-glass elevators. Upon ascent, gaze at the incredible views overlooking the community and stunning green nature - all from the most panoramic perspective.



A wide-angle photograph of a half-Olympic-sized infinity pool at dusk. The pool's edge is perfectly aligned with the horizon, creating a seamless transition between the turquoise water and the city skyline. In the foreground, two dark wicker lounge chairs with white cushions sit on a light-colored wooden deck. A small, round, two-tiered metal table holds a glass of iced drink, a white bottle, and a rolled-up towel. Two tall palm trees frame the scene on either side. In the middle ground, a man and a woman are in the pool, holding hands and looking at each other. The background features a dense city skyline with the Burj Khalifa as the central focal point, all under a soft, orange-hued sunset sky.

IMMERSE INTO INFINITY

Take a refreshing dip in the half Olympic-sized infinity pool overlooking breathtaking views across the crystal blue lagoon or soak up the sun on the wooden pool deck. With iconic sunsets, laid-back tunes and cosy cabanas to nestle into, this is the perfect place to lay back and enjoy the sunshine.



Spend your days wandering along the French-Riviera-inspired boulevard as you shop, dine and mingle with other residents. From luxury fashion boutiques to homewares stores, fine dining restaurants to quaint cafes and year-round entertainment for the whole family, you might just never want to leave.

THE WORLD AT YOUR DOORSTEP

Created with contemporary lifestyles in mind, Riviera Rêve offers intuitiveness and sophistication in every way. With premium wood joinery and finishings, bespoke integrated lighting and Italian marble flooring, every detail of your home has been curated to perfection.

STEP INTO UNRIVALLED LUXURY



ENTER IN ELEGANCE

Experience that hotel-like feeling, every time you walk to your door. With calacatta marble flooring, 2.3 metre veneered doors, statement wall sconces and security via an innovative smart system – coming home as never felt so rewarding.

Created for those with elevated lifestyles, each apartment exudes airy, open floor plans with floor-to-ceiling balcony windows. With the ability to fully open up, the living space is extended flooding in natural light and sweeping views across Downtown Dubai. With an effortless feeling of space and a functional design, Riviera Rêve is a modern-day classic in the making.

STEP INTO YOUR DOMAIN



Elegance and finesse are integral to the style of your living quarters. From the quartz stone countertops, integrated pendant lighting, natural wood elements to the built-in pantry - everything has been presented with flawless execution.



Modern in style, yet beautifully functional, Riviera Rêve caters to those with a passion for living exceptionally well. Where you can define your own standard of luxury - a place you don't just call home, but truly feel at home.

With the unexpected luxury of space, relish in the elegance of your master bedroom. Designed using an open, expansive plan surrounded by floor-to-ceiling glass, each master bedroom allows the morning light to flood in while offering panoramic views of the magnificent crystal lagoon.

SPACIOUS SPLENDOUR



With bespoke walk-in-curtains, velvety smooth headboards, chandelier lighting fixtures and premium gold finishings, everything has been tastefully designed to accentuate your lifestyle - naturally benchmarked against the most sought-after residences.



As you walk into the bathroom, become overwhelmed with opulence. Featuring integrated vanity mirrors, LED lighting, free-standing double basins, calacatta marbled walls, porcelain flooring and floating storage, Riviera Rêve sets a new standard for luxury living.

A CLASS OF ITS OWN

Bask in the glory of your very own private terrace overlooking magical views. Offering maximum seclusion in a tranquil setting, our lagoon-facing residences provide endless views across Dubai's iconic skyline. Dine, entertain or simply relax on your exclusive balcony and live the 'high-life' every day.

VIEWS, PRIVY TO FEW





AWE-INSPIRING AMENITIES

Whether you want to take a dip in the grand infinity pool, dine outdoors along the boulevard, shop the incredible retail outlets and boutiques or let the kids unleash their adventurous side in the indoor and outdoor playground, you'll live exceptionally well at Riviera Réve. You will also enjoy personalized perks such as a 5-star laundry service and customized carwash cleaning.



Reserved exclusively for residents, the premium lounge is a contemporary space featuring dedicated meeting areas, high-speed internet and state-of-the-art business facilities – the perfect place to mix business with pleasure.

RECLINE IN THE PREMIUM LOUNGE

Experience a state-of-the-art gym and fitness studio with full glass windows overlooking Dubai's magnificent skyline, the infinity pool and the waterfall feature. This private, residents-only space offers a mix of innovative cardio machinery, spin bikes, treadmills and a restorative yoga room to help you stay on top of your well-being, both physically and mentally.

WORKOUT WITH A VIEW





Devoted to the littlest of residents, our 100sqm indoor play areas are bursting with toys, activity tables, a library and the wonderful sound of children giggling. This space is where kids can get their creative juices flowing all day, every day.

LET IMAGINATIONS RUN WILD



Welcome to your quiet corner of the world – where you can let your thoughts float away with the breeze. A private poolside cabana or a lounge to soak up the rays, – we'll help you find calm amongst life's chaos.

FIND YOUR INNER ZEN

Feast with friends, family and loved ones on our expansive rooftop terrace overlooking Dubai's skyline. With premium grills, lounge chairs and seating areas, this is the perfect place to enjoy a delicious BBQ on a balmy day.

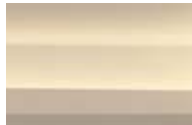
DINE AL FRESCO STYLE



ENTERTAIN ENDLESSLY



Make the most of Dubai's incredible weather and spend your days and nights entertaining outdoors - screening live sports, iconic events and blockbuster movies, there's something fun for the whole family. When Summer hits, cool down in our Clubhouse or rent out our Indoor Home Theatre for a night in with friends and family.



CEILING COVE WITH
INDIRECT LIGHTING



BOISERIE PANELING



FULL HOME
AUTOMATION SYSTEM



RICH STONE FINISHES



LUXURY
SANITARYWARE



RICH STONE FINISHES



OVER COUNTER
WASH BASIN



MIRROR



WALL MOUNTED WC

FINISHING MATERIALS



* FULLY BUILT IN APPLIANCES (SIEMENS)
- FRIDGE
- OVEN
- MICROWAVE OVEN
- ELECTRIC HOB
- DISHWASHER

* GERMAN KITCHEN MECHANISM &
ACCESSORIES TO BE CONSIDERED
(SPICE RACK/CORNER UNIT.. ETC)



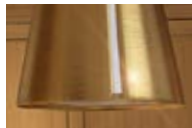
WOOD FINISH DOOR



STONE FINISH
FLOORING



FREESTANDING
KITCHEN ISLAND



DECORATIVE ISLAND
COOKER HOOD
FROM FABER



WOOD FINISH
PANELLED CABINETS



STONE FINISH
COUNTERTOP



LACQUERED MATT
CABINETS



STATUARIO LINCOLN
MARBLE MOSAIC
TILE PIECES



STONE FINISH WALLS



FLOOR MOUNTED
BASIN MIXER
(GUN METAL FINISH)



FREE-STANDING BASIN



FULL-HEIGHT MIRROR
WITH SHELF IN
MARBLE

* ALL SANITARY FITTINGS FOR
MASTER BATH TO BE IN CHAMPAGNE
GOLD FINISH

Lap up 2.7 km of pristine, turquoise waters and man-made beaches surrounded by lush greenery, open spaces, watersports and kids' play areas. A hub of activity and life, the crystal lagoon provides entertainment, fun and fitness for the whole family.

A CRYSTAL BLUE LAGOON



Brimming with boutique shops, fine dining restaurants, quaint cafes, recreational facilities and everyday amenities, the French-Riviera-inspired boulevard is a one-of-a-kind experience in the heart of Dubai. Enjoy a vibrant, dynamic lifestyle, just moments from your door.

A VIBRANT BOULEVARD



KEY LANDMARKS

- 1

MEYDAN ONE MALL / MEYDAN ONE TOWER
3 minutes from Riviera
ميدان ون مول/برج ميدان ون
3 دقائق من ريفيرا
- 2

THE MEYDAN HOTEL
2 minutes from Riviera
فندق الميدان
2 دقائق من ريفيرا
- 3

SZR / AL KHAIL ROAD / MBZ ROAD
10 minutes from Riviera
شارع الشيخ زايد/شارع الخيل/
شارع الشيخ محمد بن زايد
10 دقيقة من ريفيرا
- 4

DOWNTOWN DUBAI
10 minutes from Riviera
وسط مدينة دبي
10 دقائق من ريفيرا
- 5

DUBAI INTERNATIONAL AIRPORT
15 minutes from Riviera
مطار دبي الدولي
15 دقيقة من ريفيرا
- 6

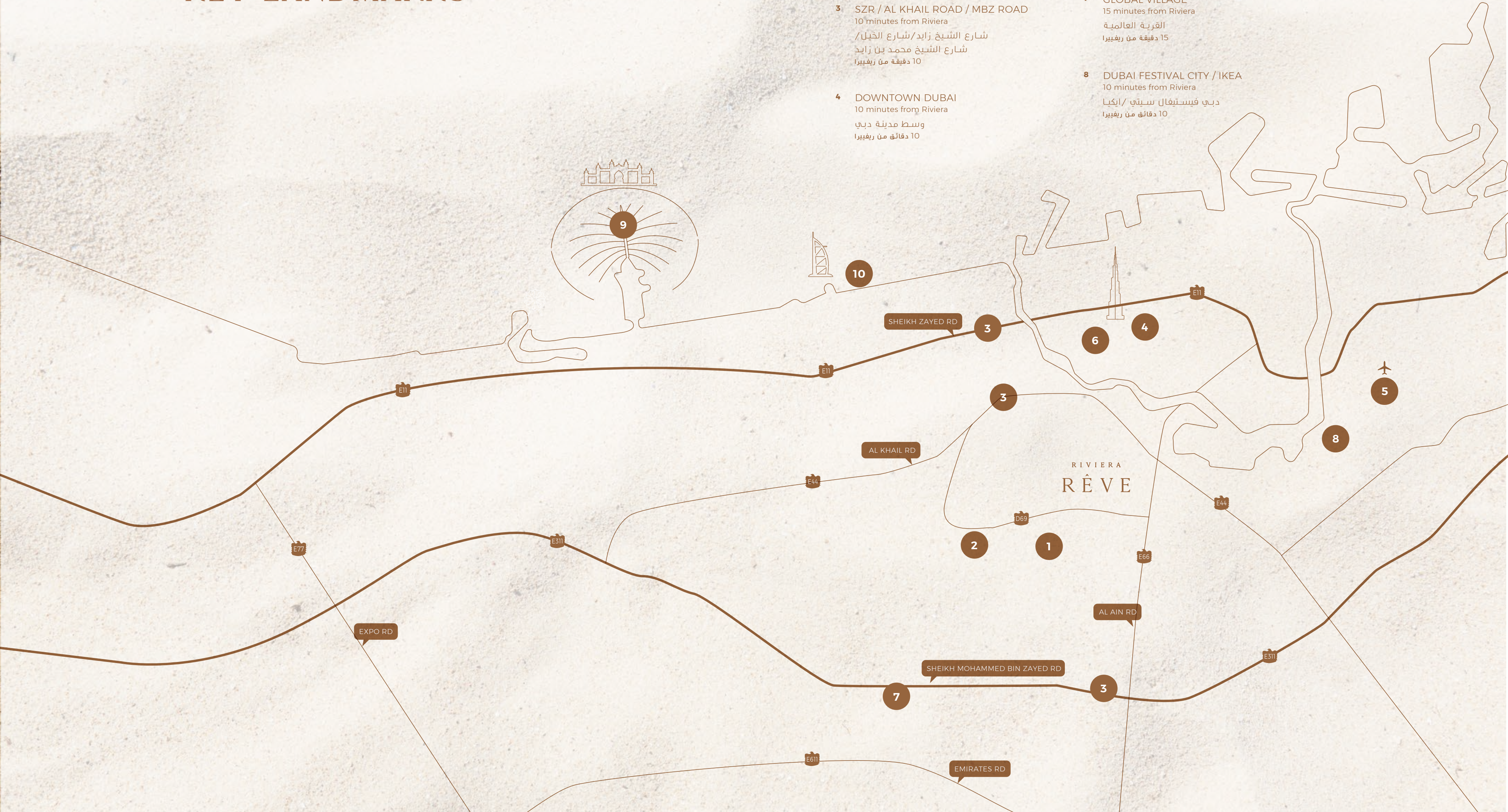
DIFC / BUSINESS BAY
10 minutes from Riviera
مركز دبي المالي العالمي- الخليج التجاري
10 دقائق من ريفيرا
- 7

GLOBAL VILLAGE
15 minutes from Riviera
القرية العالمية
15 دقيقة من ريفيرا
- 8

DUBAI FESTIVAL CITY / IKEA
10 minutes from Riviera
دبي فيستيفال سيتي / ايكيا
10 دقائق من ريفيرا
- 9

PALM JUMEIRAH
22 minutes from Riviera
نخلة جميرا
22 دقائق من ريفيرا
- 10

JUMEIRAH BEACH
12 minutes from Riviera
شاطئ جميرا
12 دقائق من ريفيرا





Experience the grandeur of Dubai from the 5-star hotel facing the crystal lagoon. This 8-storey resort-style hotel offers luxurious suites, an array of retail boutiques, restaurants, entertainment outlets, a luxury spa, as well as its own private beach – all within walking distance from your home.

AZIZI HOTEL.
WELCOME TO HOSPITALITY LIKE NO OTHER





THE MEYDAN HOTEL



DUBAI RACING CLUB - MEYDAN RACECOURSE

MEYDAN ONE MALL



An iconic location in the heart of Meydan, Riviera Rêve offers a visual connection to Burj Khalifa, Downtown Dubai, Business Bay & Sheikh Zayed Road. Surrounded by shopping malls, hotels, international schools, restaurants and Dubai's finest racing club, there is something for every family member.

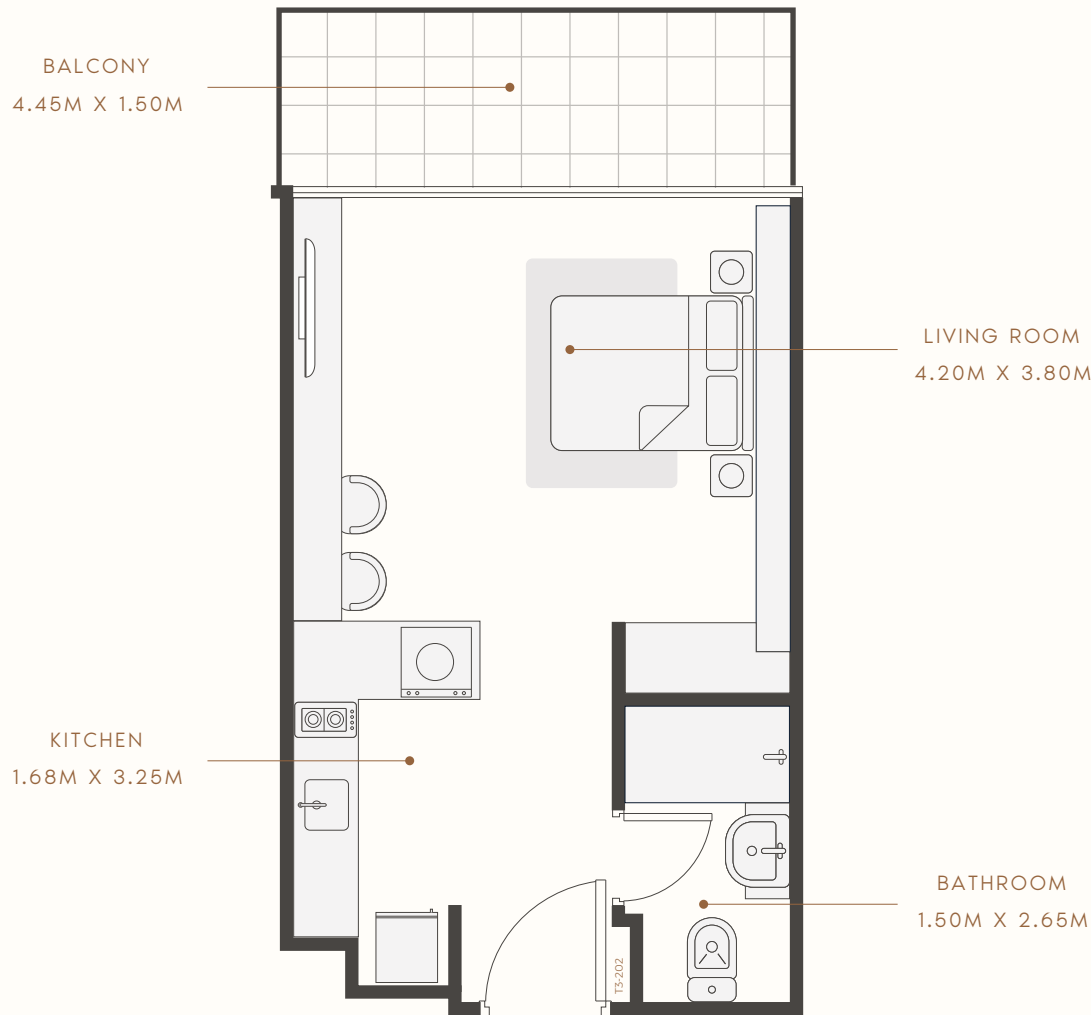
INTERNATIONAL SCHOOLS



FLOOR PLAN

STUDIO TYPE 1

1ST TO 18TH FLOOR



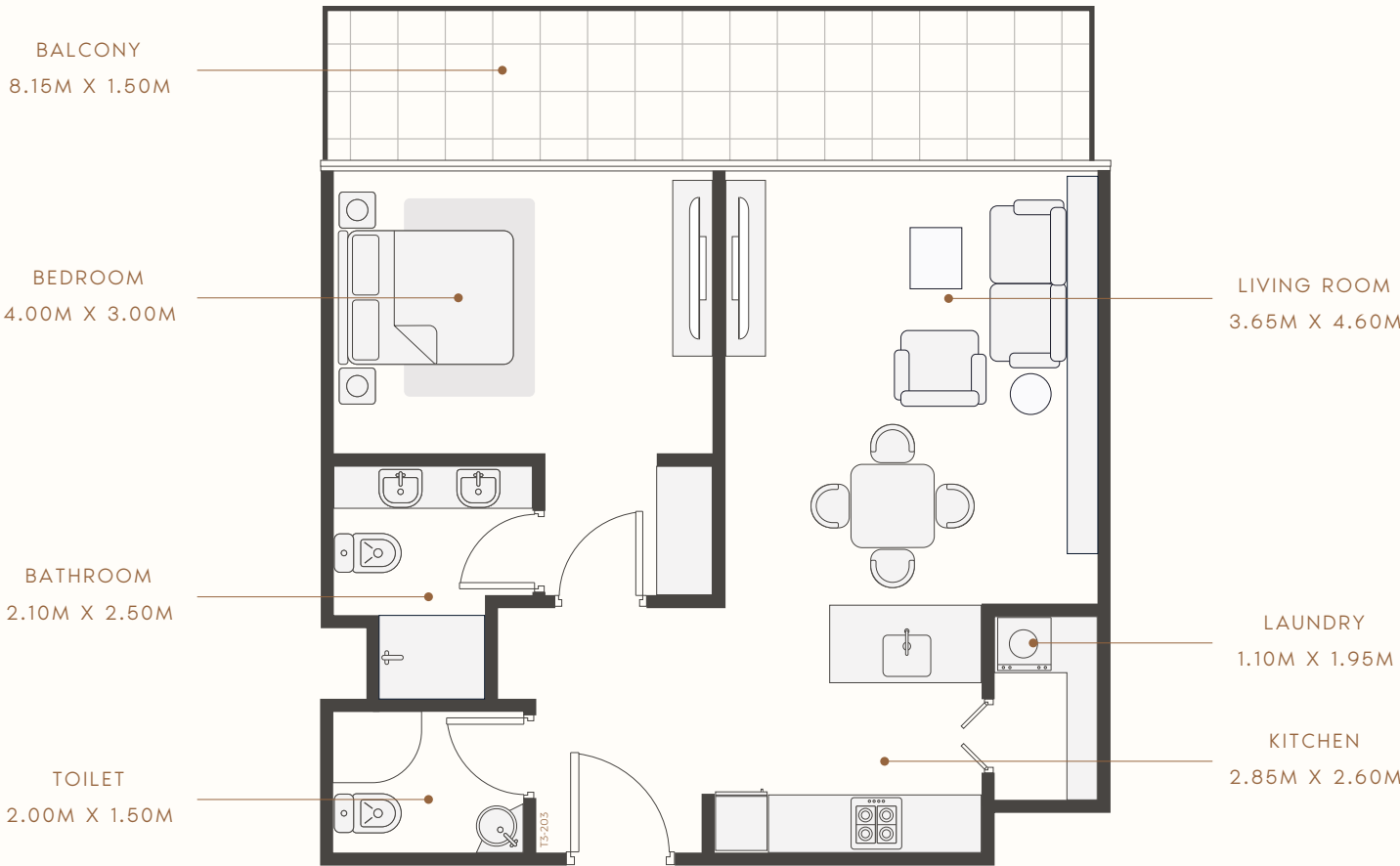
SUITE AREA : 364.36 SQ.FT
TOTAL AREA : 444.55 SQ.FT

TYPICAL UNITS

FLOOR PLAN

1 BEDROOM TYPE 1

1ST TO 26TH FLOOR



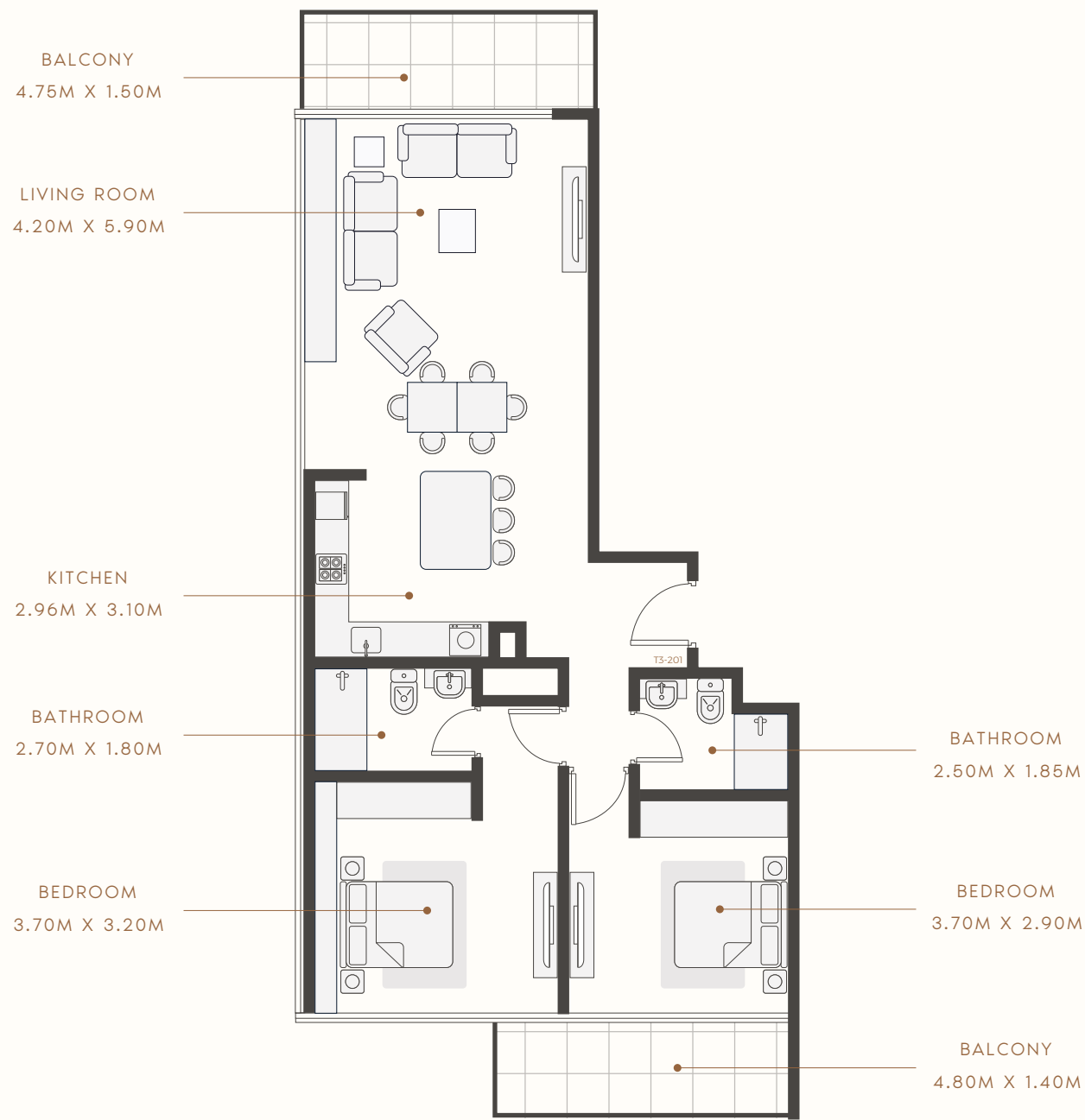
SUITE AREA : 647.77 SQ.FT
TOTAL AREA : 793.19 SQ.FT

TYPICAL UNITS

FLOOR PLAN

2 BEDROOM TYPE 1

1ST TO 18TH FLOOR



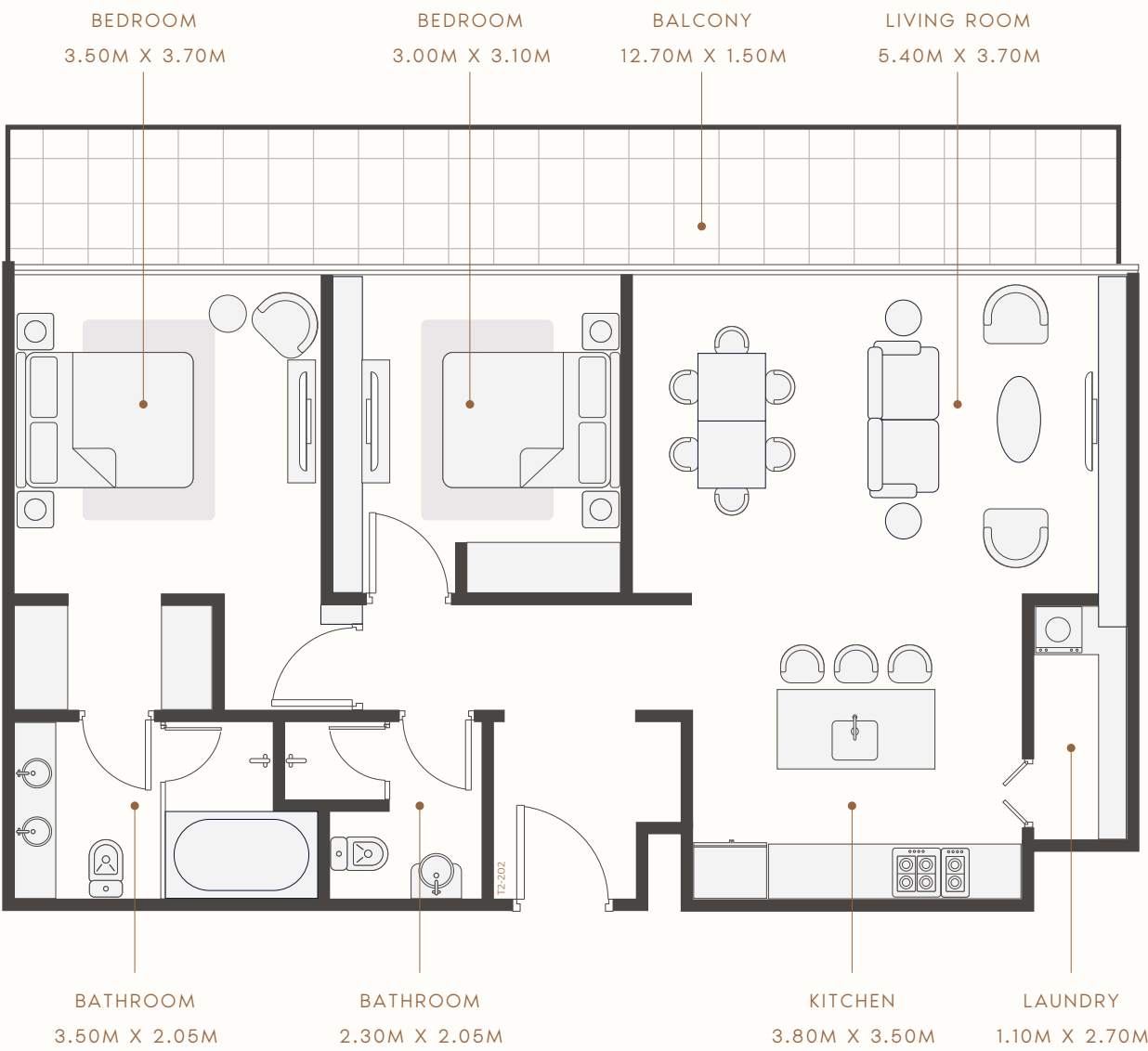
SUITE AREA : 1058.84 SQ.FT
TOTAL AREA : 1226.65 SQ.FT

TYPICAL UNITS

FLOOR PLAN

2 BEDROOM TYPE 2

2ND TO 18TH FLOOR



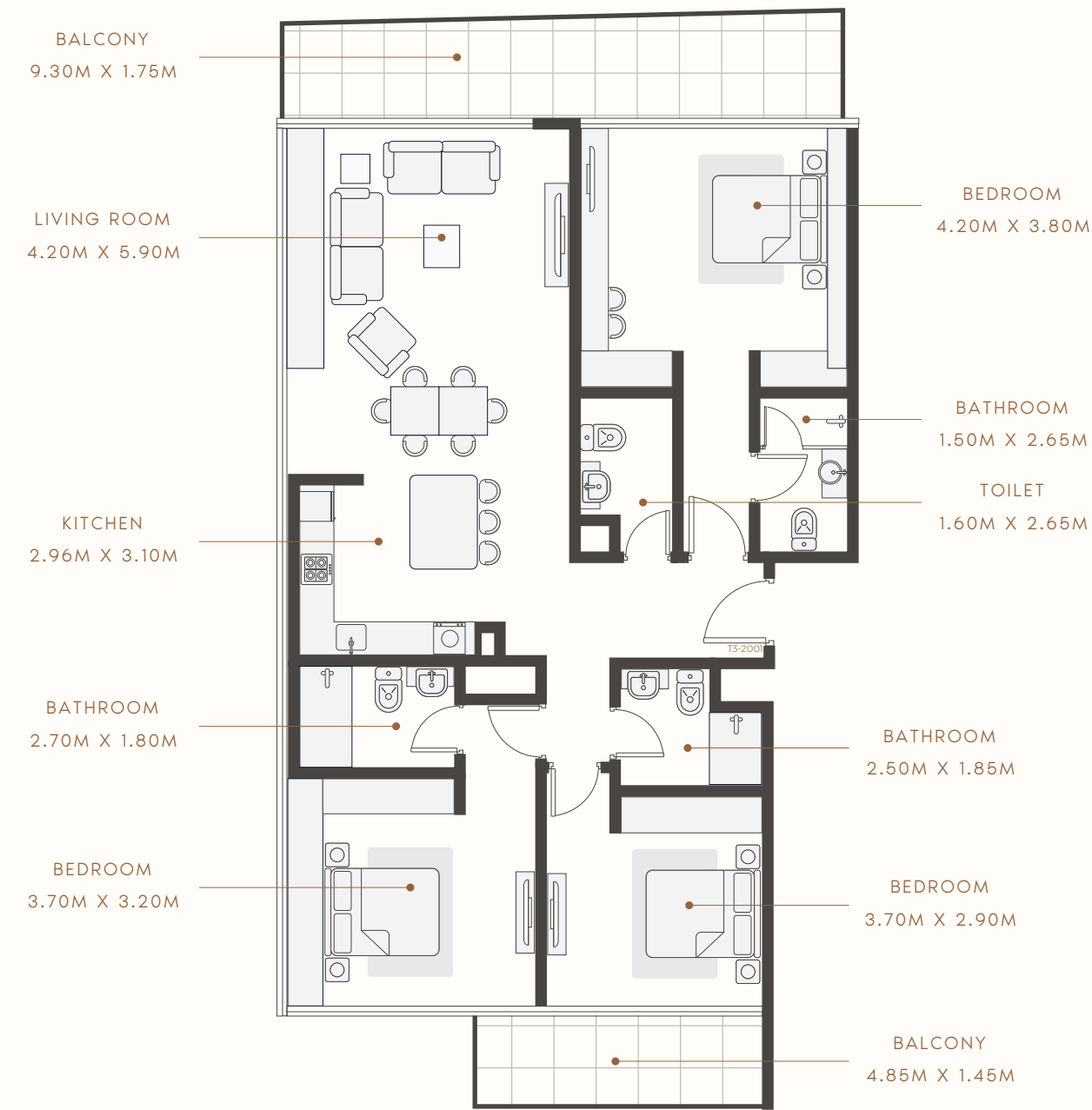
SUITE AREA : 1018.37 SQ.FT
TOTAL AREA : 1243.88 SQ.FT

TYPICAL UNITS

FLOOR PLAN

3 BEDROOM TYPE 1

19TH TO 26TH FLOOR



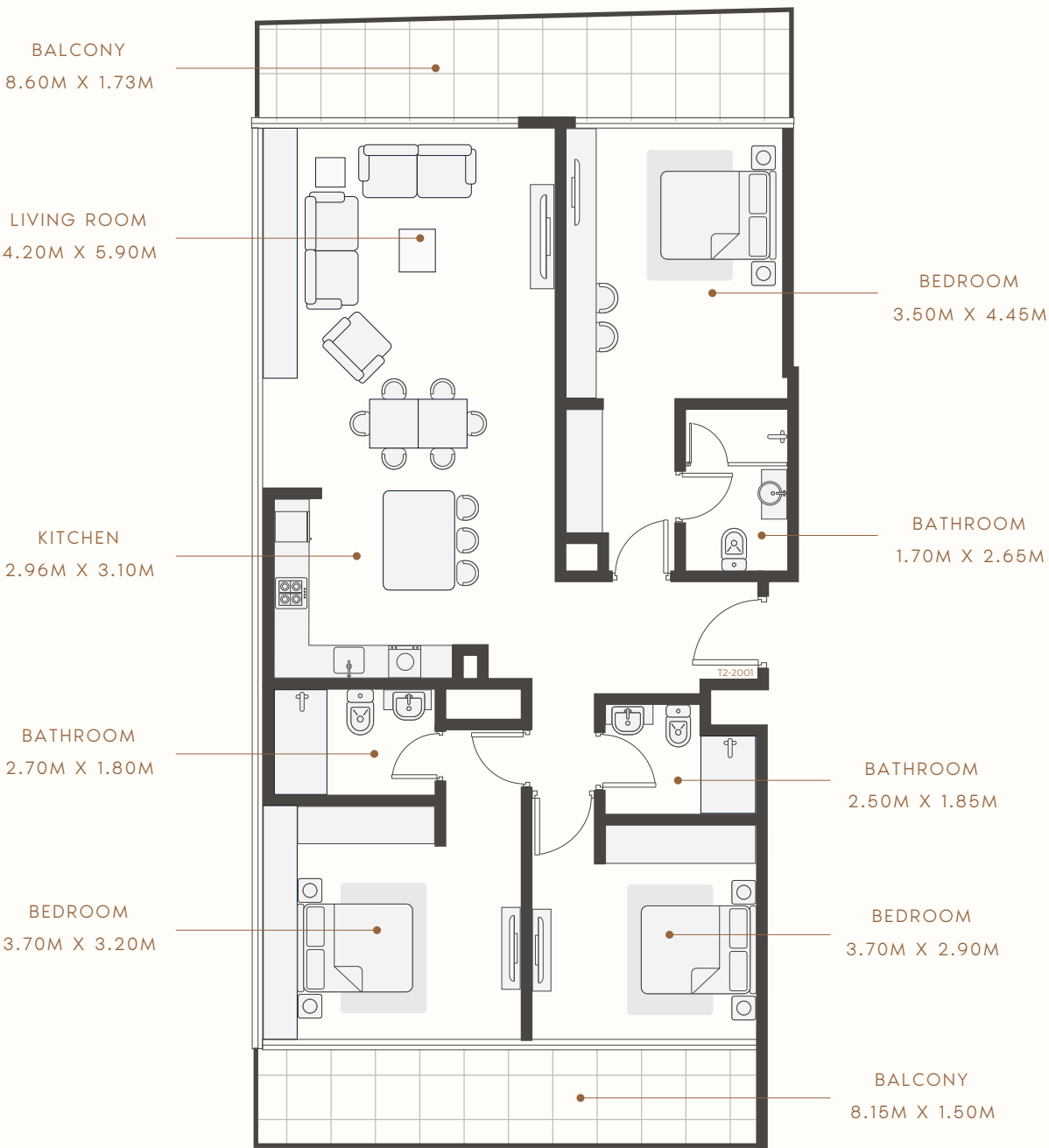
SUITE AREA : 1455.39 SQ.FT
TOTAL AREA : 1717.70 SQ.FT

TYPICAL UNITS

FLOOR PLAN

3 BEDROOM TYPE 2

19TH TO 26TH FLOOR



SUITE AREA : 1383.27 SQ.FT
TOTAL AREA : 1691.76 SQ.FT

TYPICAL UNITS

Azizi Developments is one of Dubai's leading, and most admired real estate and lifestyle development companies. Established in 2007, they have proven competencies in modern residential and mixed-use communities strategically located in some of Dubai's most sought-after neighbourhoods. They are committed to not just meeting, but exceeding the expectations of their clients and community and enriching lives through state-of-the-art projects and real estate developments.





800-29494

AZIZIDEVELOPMENTS.COM



THANKS FOR WATCHING

CONTACT US FOR MORE INFORMATION

 www.svrealstate.agency

 [svrealstate_agency](https://t.me/svrealstate_agency)

 [svrealstate_agency](https://wa.me/svrealstate_agency)

 svrealstate@agency

 +9 909 999 99 99