

YOU ARE A GUIDE TO THE
WORLD OF LUXURY

SEALAVIE

LUXURY LIVING BY THE BAY



Real Estate Development

Why **ABU DHABI?**

Abu Dhabi, a world of endless possibilities, where you can enjoy year-round sports, entertainment, and cultural events in a safe and secure environment.

Abu Dhabi is a hub for innovation and sustainability, with world-class infrastructure.

With a well-regulated market and tax free benefits It is the perfect location for investment. In Abu Dhabi, the opportunities are boundless.



Yas Island

A destination designed to suit every lifestyle,
from the aspirational to the adventurous,
and where everything you want is within reach.



Welcome To
Sea La Vie
Luxury Living by the Bay





A unique waterfront lifestyle destination

Where today's innovations are creating homes and building happy communities that are environmentally friendly and sustainable, ensuring better quality of life for all.



**A blend of stunning
architecture, modern
design and unrivaled views.**





A community where waterfront living takes on a new dimension of elegance.

**Fulfilling your needs
and nurturing mind, body
and soul - your health and
wellbeing are catered
for at Sea La Vie.**





Designed for your comfort

Hi-tech fixtures and fittings are complemented by the ingress of natural light, allowing subtle hues and creative lighting to enhance the spacious accommodation, designed for a relaxing ambiance.

Inspired by the Sea

Our concept is designed to embrace and reflect the sea colors in the interior spaces for a better dialogue between inside and outside.

CONNECT



WITH



MOTHER

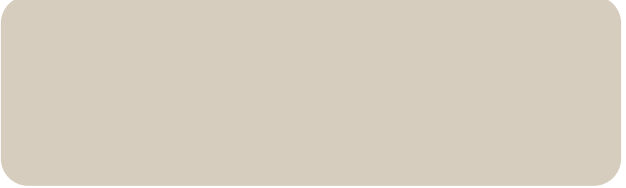
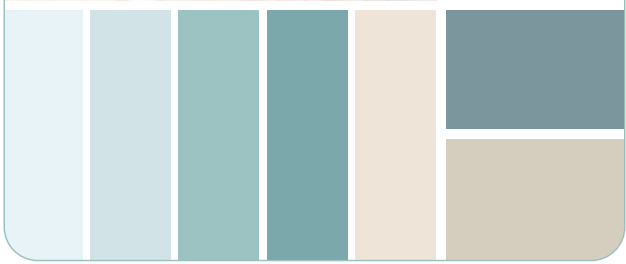
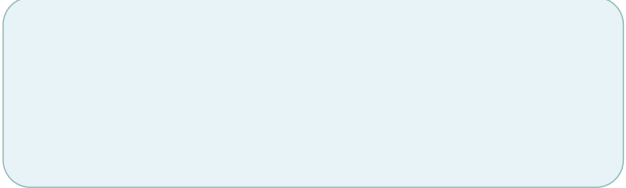


NATURE



Interior concept

We believe that good interior design lets nature in essentially when surrounded by such a beautiful landscape and the open sea.



**Where luxury
and nature
combine**




























SEALAVIE

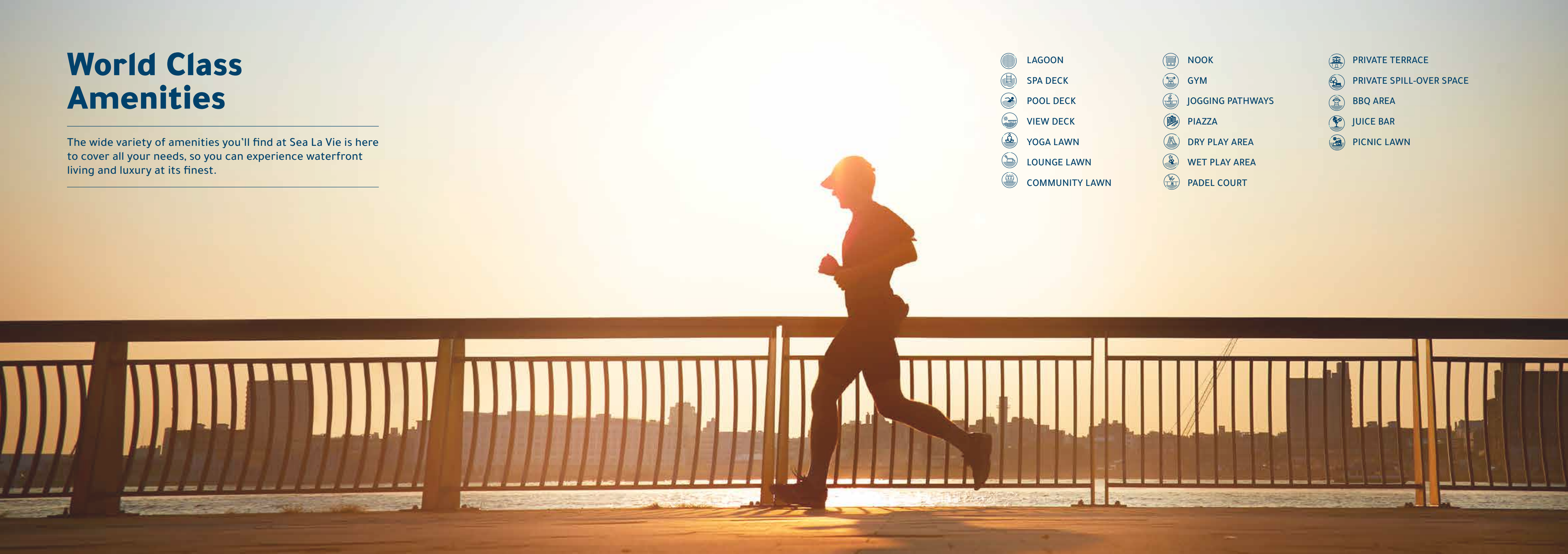


SEALAVIE

World Class Amenities

The wide variety of amenities you'll find at Sea La Vie is here to cover all your needs, so you can experience waterfront living and luxury at its finest.

- | | | |
|--|--|--|
|  LAGOON |  NOOK |  PRIVATE TERRACE |
|  SPA DECK |  GYM |  PRIVATE SPILL-OVER SPACE |
|  POOL DECK |  JOGGING PATHWAYS |  BBQ AREA |
|  VIEW DECK |  PIAZZA |  JUICE BAR |
|  YOGA LAWN |  DRY PLAY AREA |  PICNIC LAWN |
|  LOUNGE LAWN |  WET PLAY AREA | |
|  COMMUNITY LAWN |  PADEL COURT | |





SEALAVIE



SEALAVIE

Podium Floor Plan

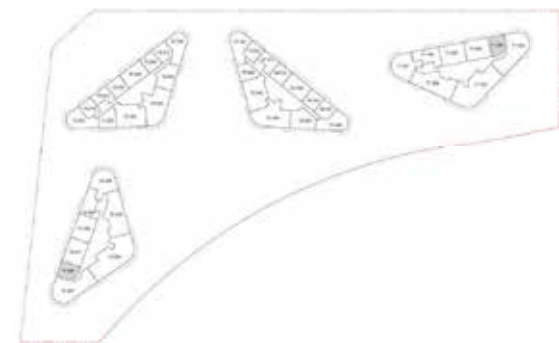
- | | | | |
|----|----------------|----|--------------------------|
| 01 | Lagoon | 09 | Piazza |
| 02 | Spa Deck | 10 | Dry Play Area |
| 03 | Pool Deck | 11 | Wet Play Area |
| 04 | View Deck | 12 | Padel Court |
| 05 | Yoga Lawn | 13 | Private Terrace |
| 06 | Lounge Lawn | 14 | Private Spill-Over Space |
| 07 | Community Lawn | 15 | BBQ Area |
| 08 | Nook | 16 | Juice Bar |





1-Bedroom Apartment

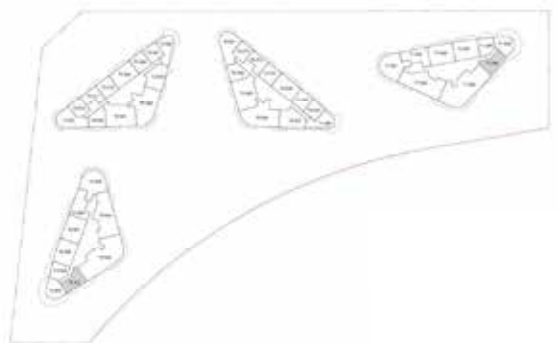
TOWER 1 & 2 - TYPE A



All materials, dimensions, and drawings are approximate, all images used are for illustrative purposes only. Information is subject to change at developer's discretion, without notice, and developer reserves the right to make revisions without liability.

1-Bedroom Apartment

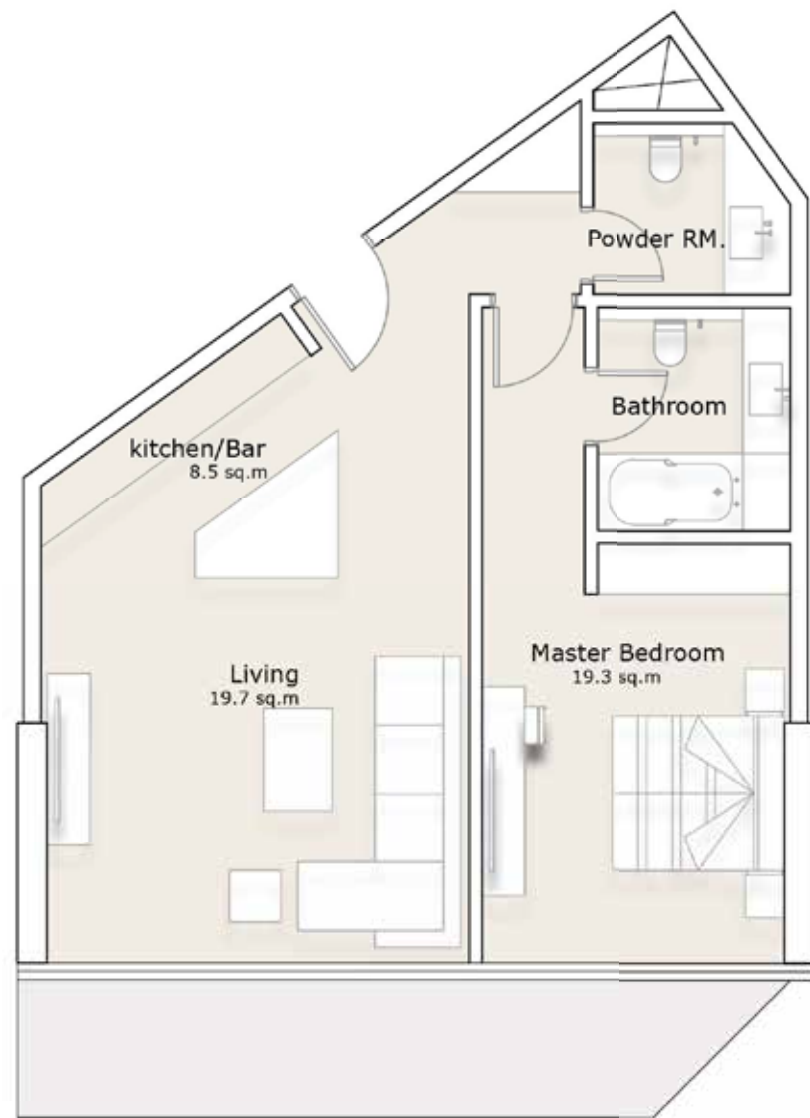
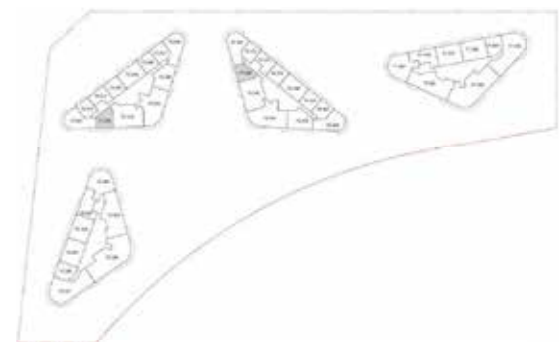
TOWER 1 & 2 - TYPE B



All materials, dimensions, and drawings are approximate, all images used are for illustrative purposes only. Information is subject to change at developer's discretion, without notice, and developer reserves the right to make revisions without liability.

1-Bedroom Apartment

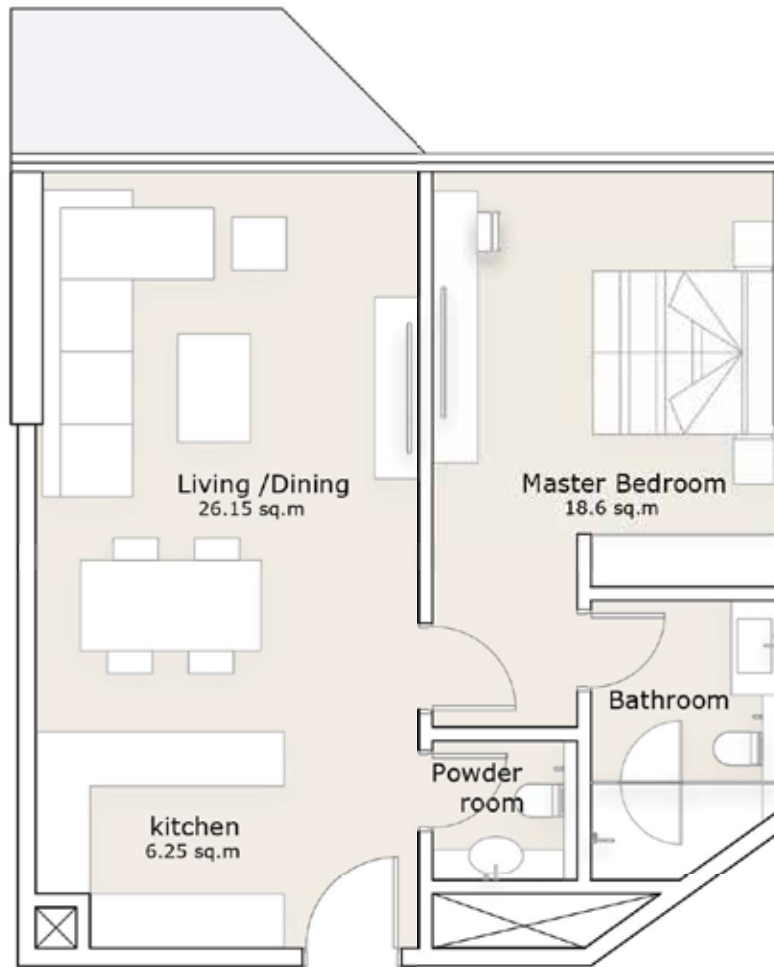
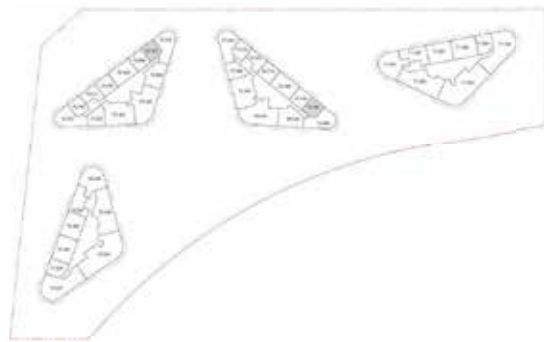
TOWER 3 & 4 - TYPE C



All materials, dimensions, and drawings are approximate, all images used are for illustrative purposes only. Information is subject to change at developer's discretion, without notice, and developer reserves the right to make revisions without liability.

1-Bedroom Apartment

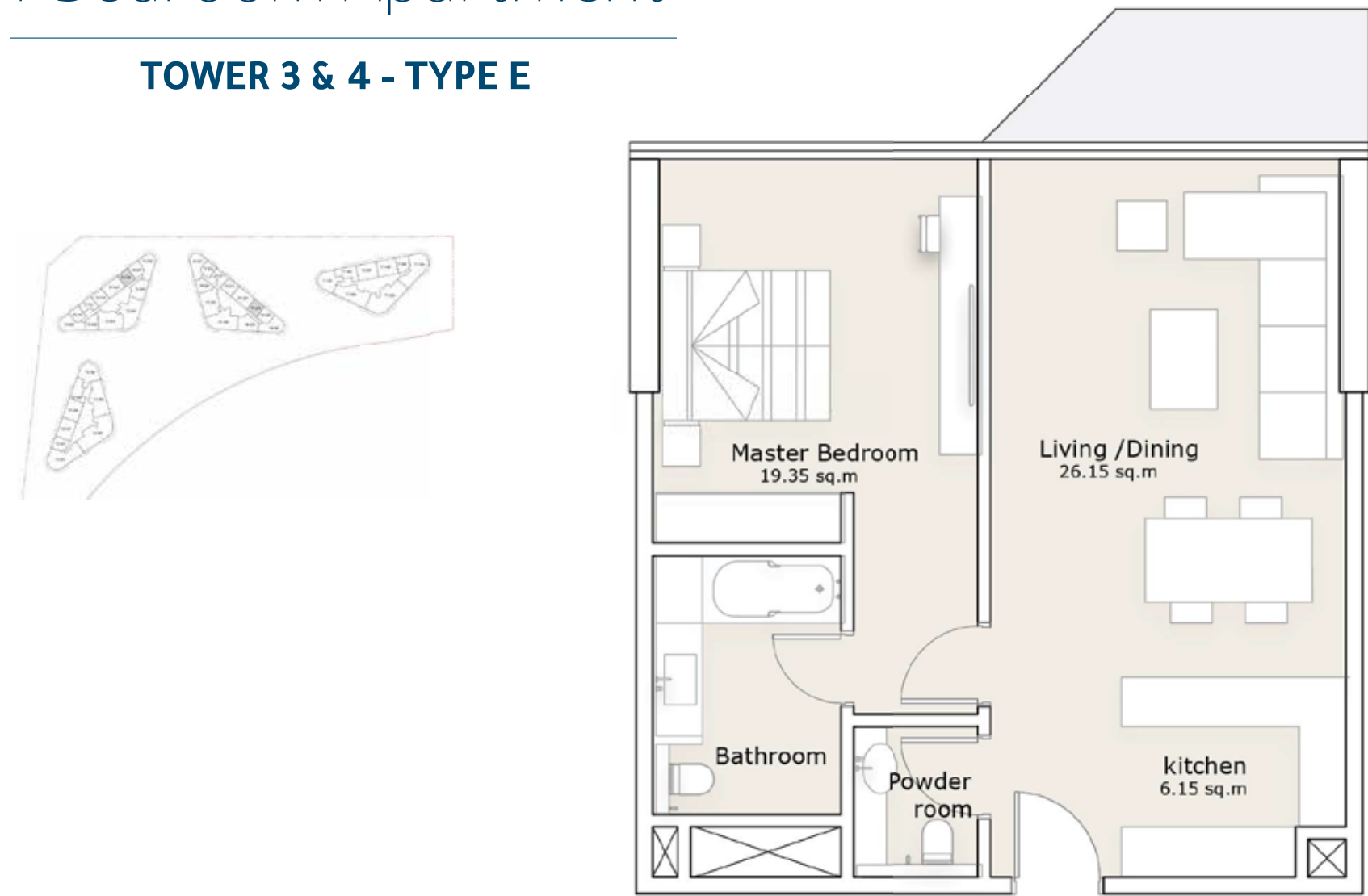
TOWER 3 & 4 - TYPE D



All materials, dimensions, and drawings are approximate, all images used are for illustrative purposes only. Information is subject to change at developer's discretion, without notice, and developer reserves the right to make revisions without liability.

1-Bedroom Apartment

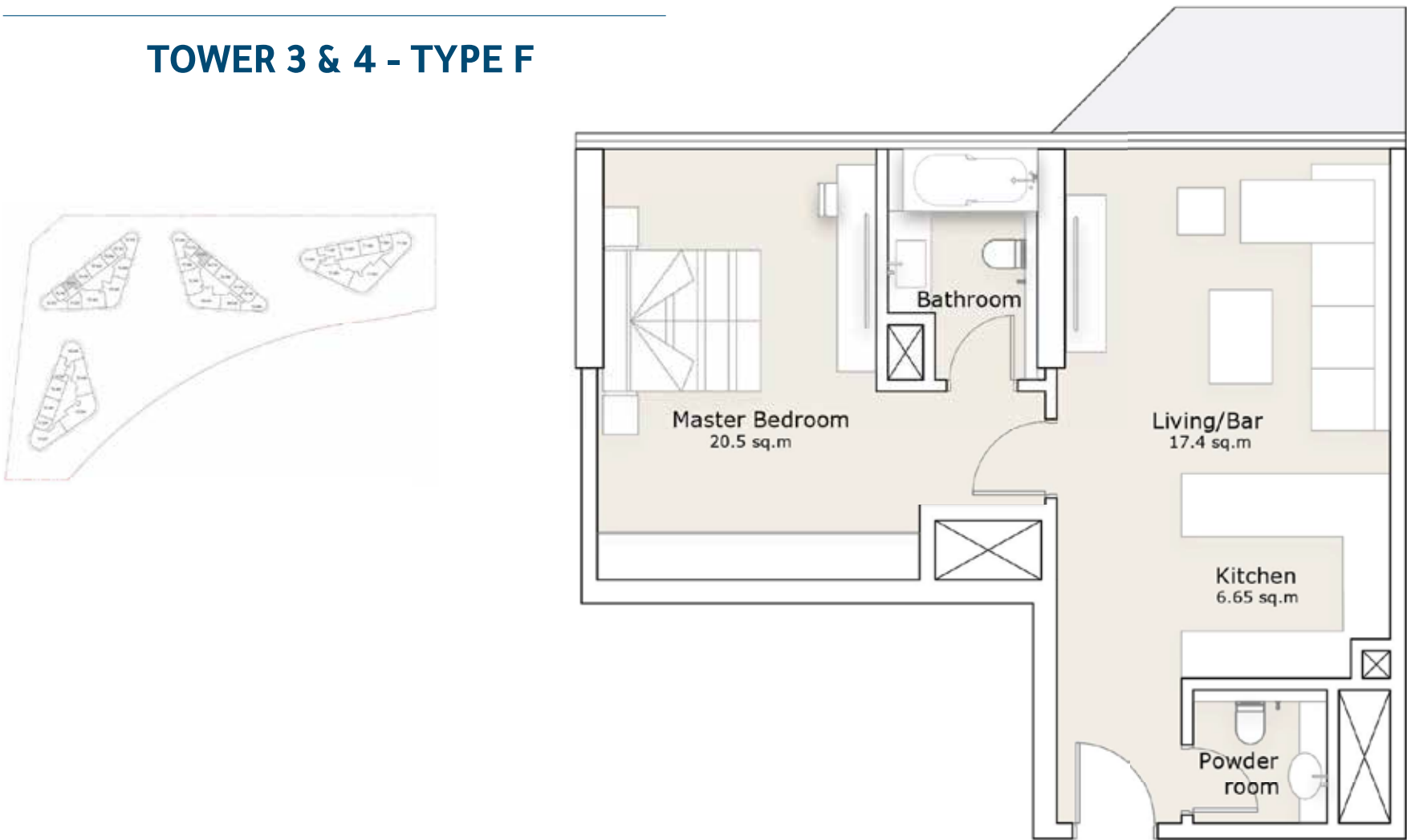
TOWER 3 & 4 - TYPE E



All materials, dimensions, and drawings are approximate, all images used are for illustrative purposes only. Information is subject to change at developer's discretion, without notice, and developer reserves the right to make revisions without liability.

1-Bedroom Apartment

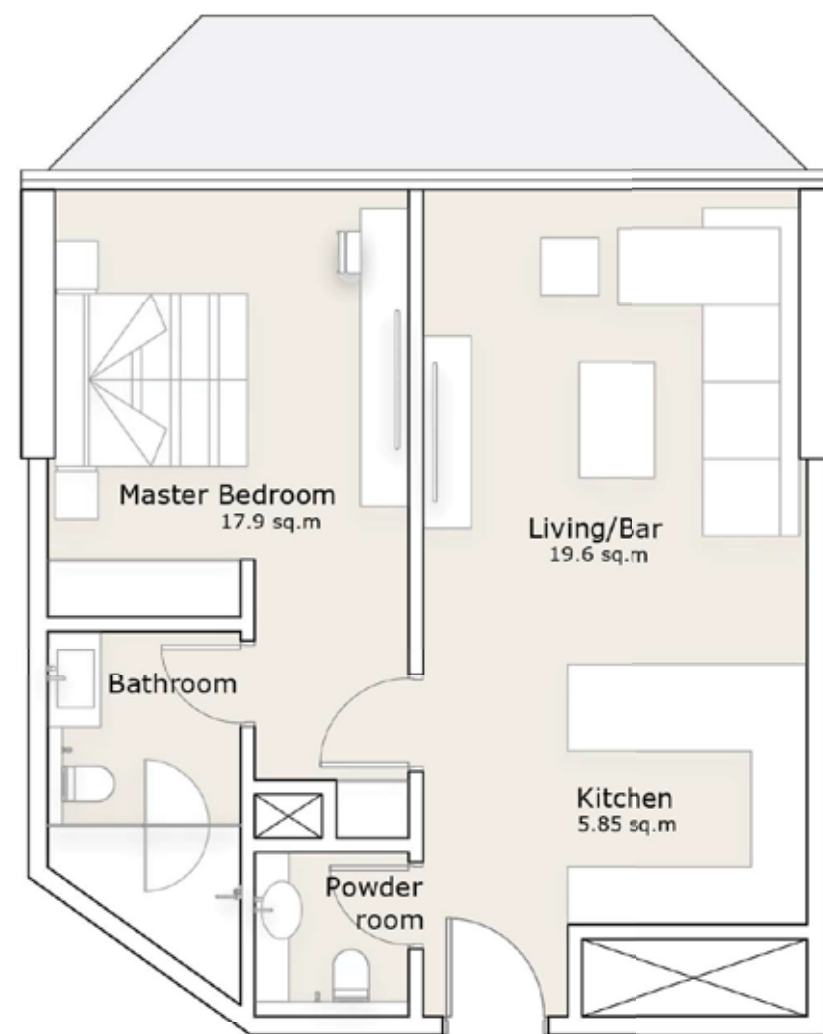
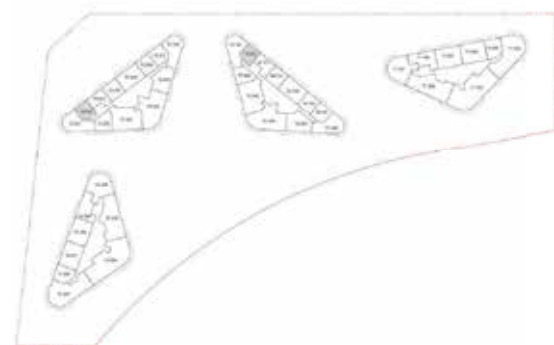
TOWER 3 & 4 - TYPE F



All materials, dimensions, and drawings are approximate, all images used are for illustrative purposes only. Information is subject to change at developer's discretion, without notice, and developer reserves the right to make revisions without liability.

1-Bedroom Apartment

TOWER 3 & 4 - TYPE G



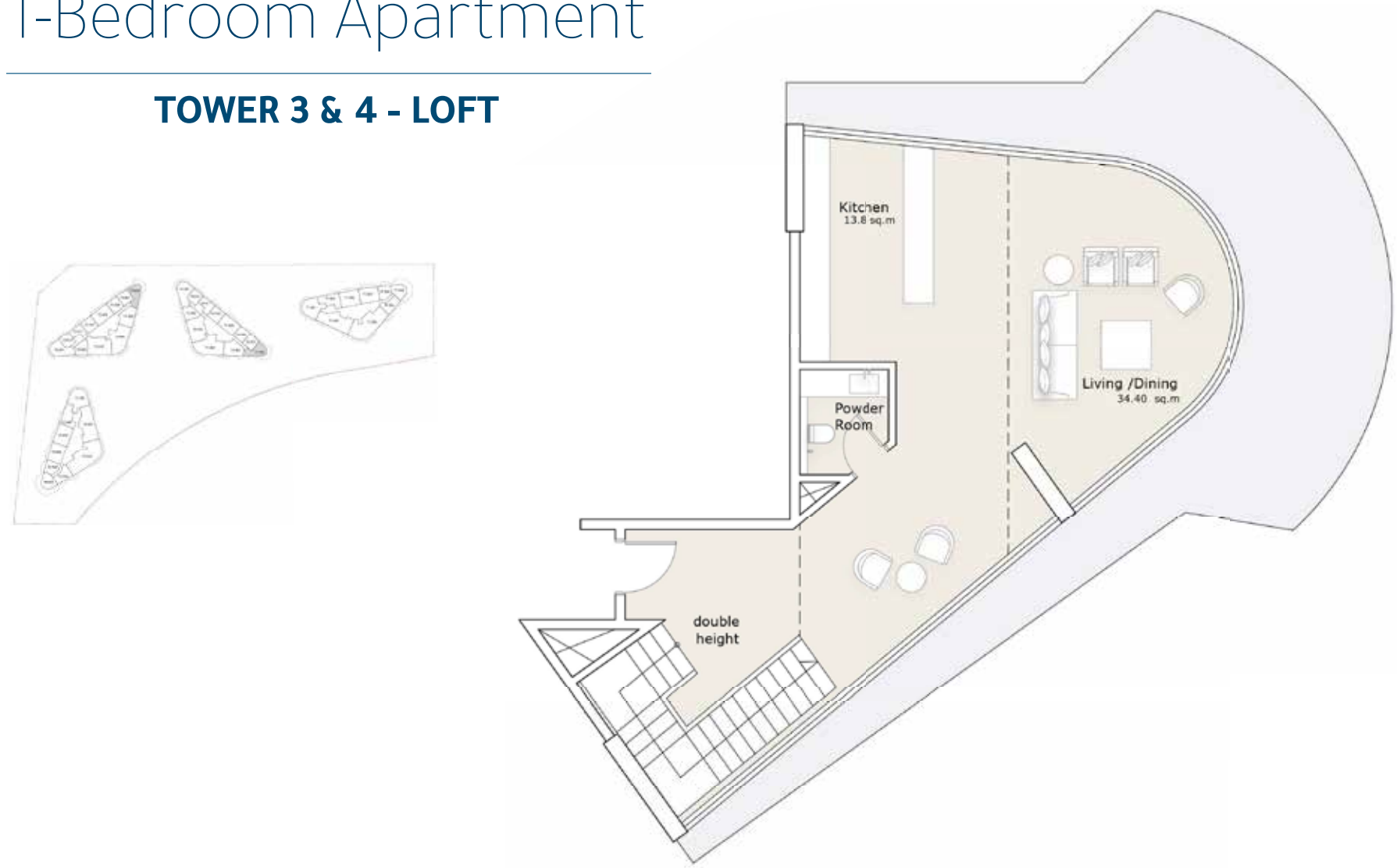
All materials, dimensions, and drawings are approximate, all images used are for illustrative purposes only. Information is subject to change at developer's discretion, without notice, and developer reserves the right to make revisions without liability.



SEALAVIE

1-Bedroom Apartment

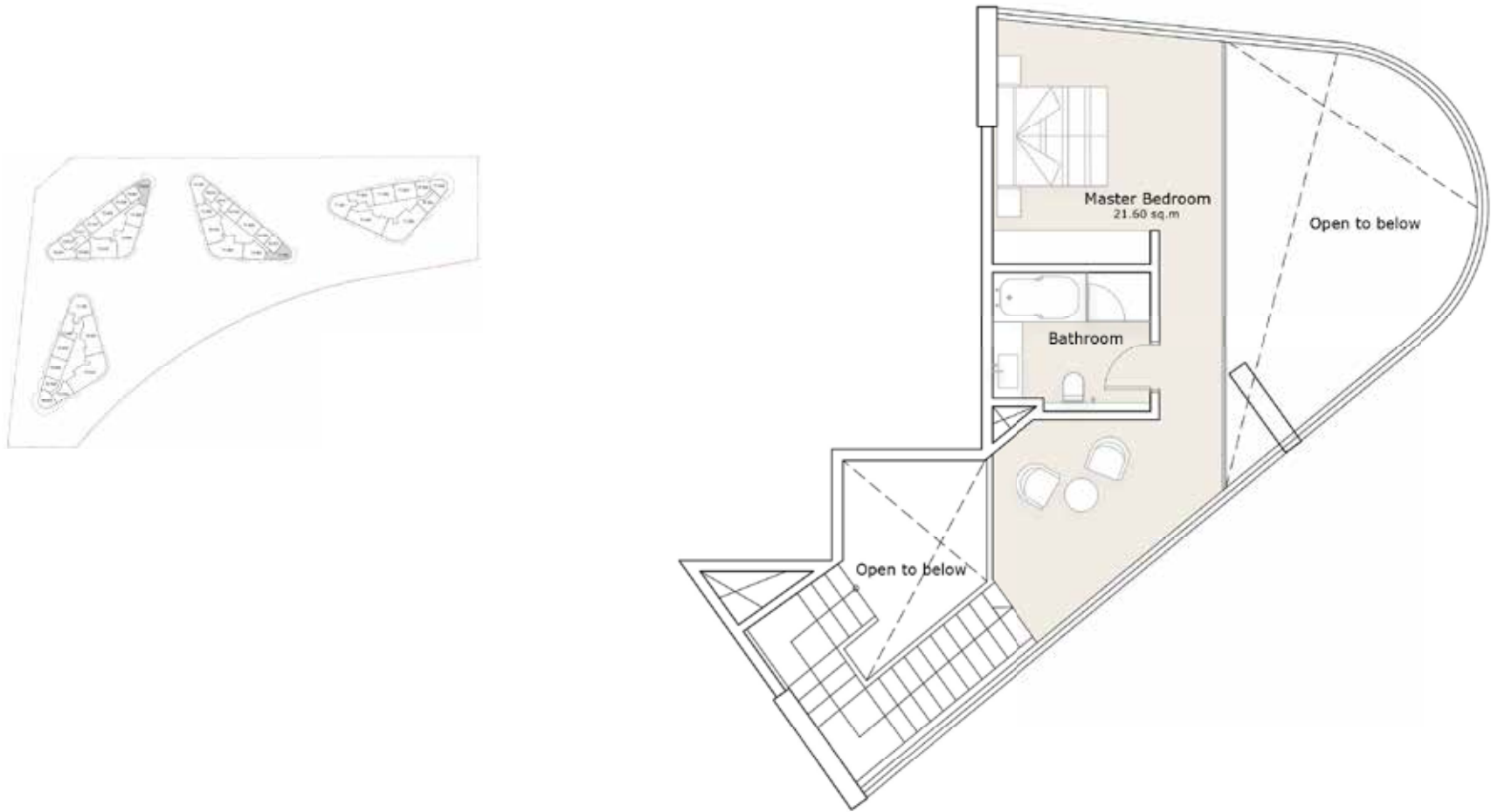
TOWER 3 & 4 - LOFT



All materials, dimensions, and drawings are approximate, all images used are for illustrative purposes only. Information is subject to change at developer's discretion, without notice, and developer reserves the right to make revisions without liability.

1-Bedroom Apartment

TOWER 3 & 4 - LOFT

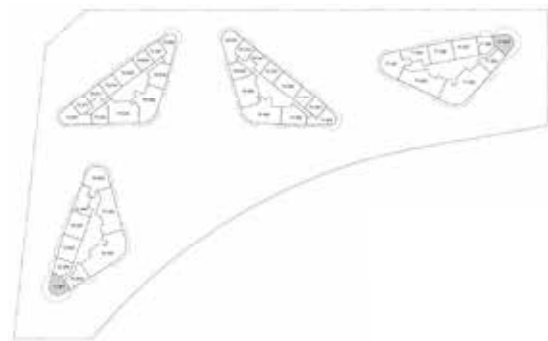


All materials, dimensions, and drawings are approximate, all images used are for illustrative purposes only. Information is subject to change at developer's discretion, without notice, and developer reserves the right to make revisions without liability.



1-Bedroom Apartment

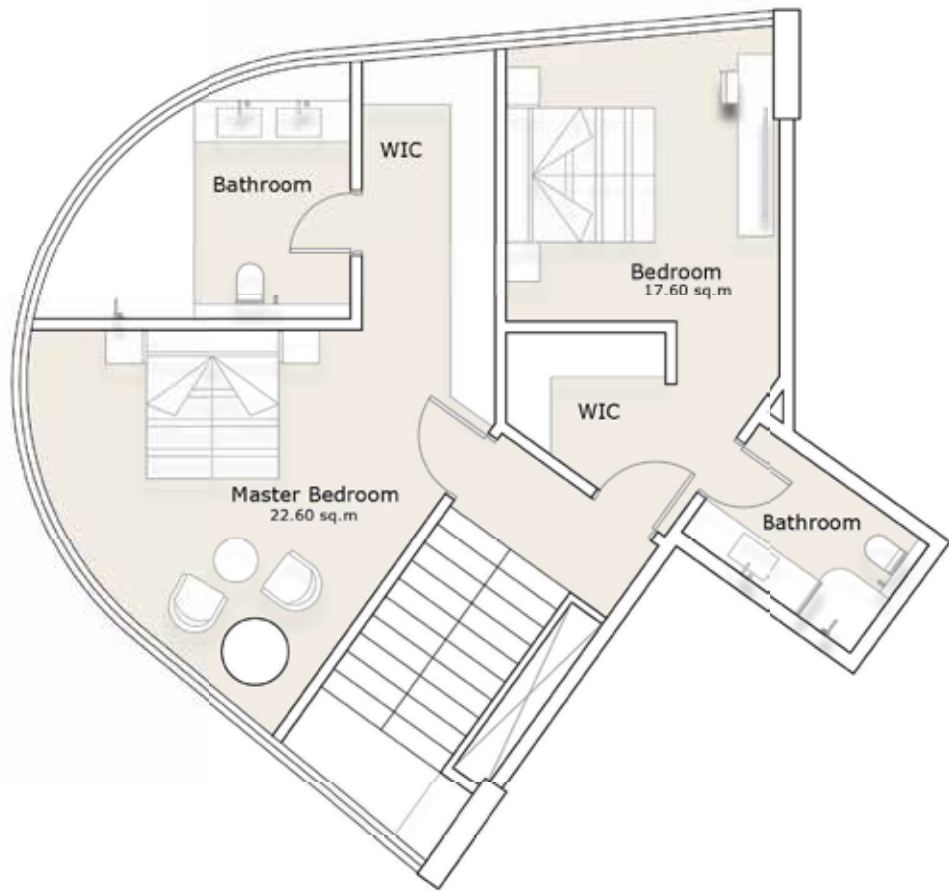
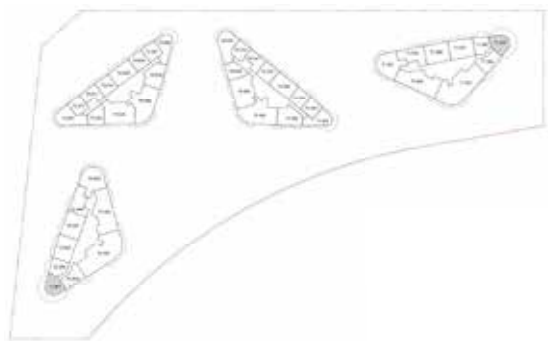
TOWER 1 & 2 - DUPLEX



All materials, dimensions, and drawings are approximate, all images used are for illustrative purposes only. Information is subject to change at developer's discretion, without notice, and developer reserves the right to make revisions without liability.

2-Bedroom Apartment

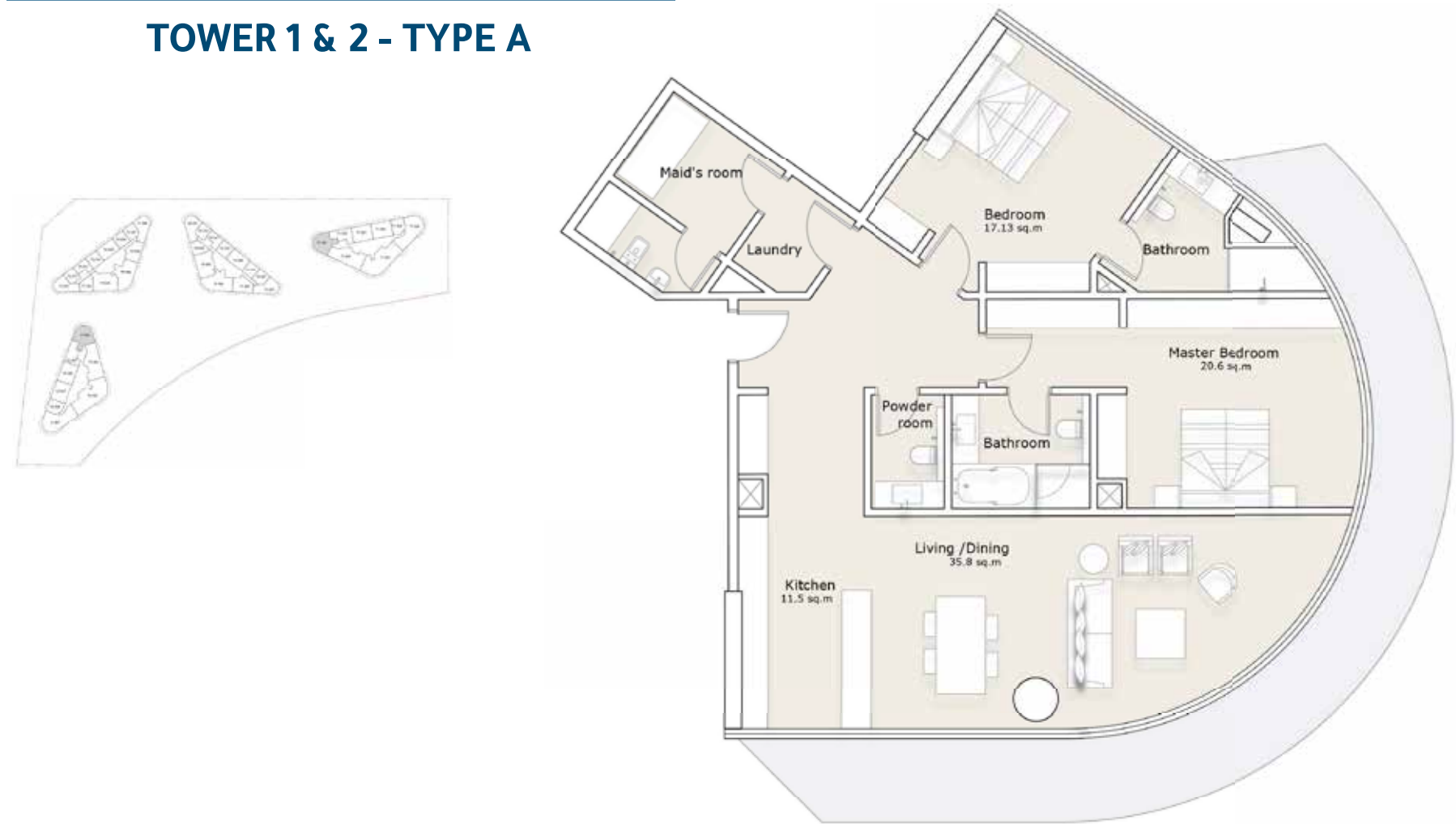
TOWER 1 & 2 - DUPLEX



All materials, dimensions, and drawings are approximate, all images used are for illustrative purposes only. Information is subject to change at developer's discretion, without notice, and developer reserves the right to make revisions without liability.

2-Bedroom Apartment

TOWER 1 & 2 - TYPE A



All materials, dimensions, and drawings are approximate, all images used are for illustrative purposes only. Information is subject to change at developer's discretion, without notice, and developer reserves the right to make revisions without liability.

2-Bedroom Apartment

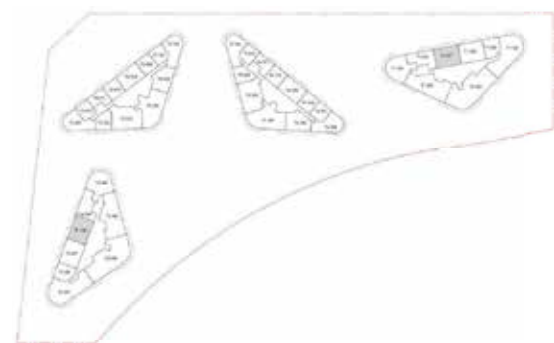
TOWER 1 & 2 - TYPE B



All materials, dimensions, and drawings are approximate, all images used are for illustrative purposes only. Information is subject to change at developer's discretion, without notice, and developer reserves the right to make revisions without liability.

2-Bedroom Apartment

TOWER 1 & 2 - TYPE C



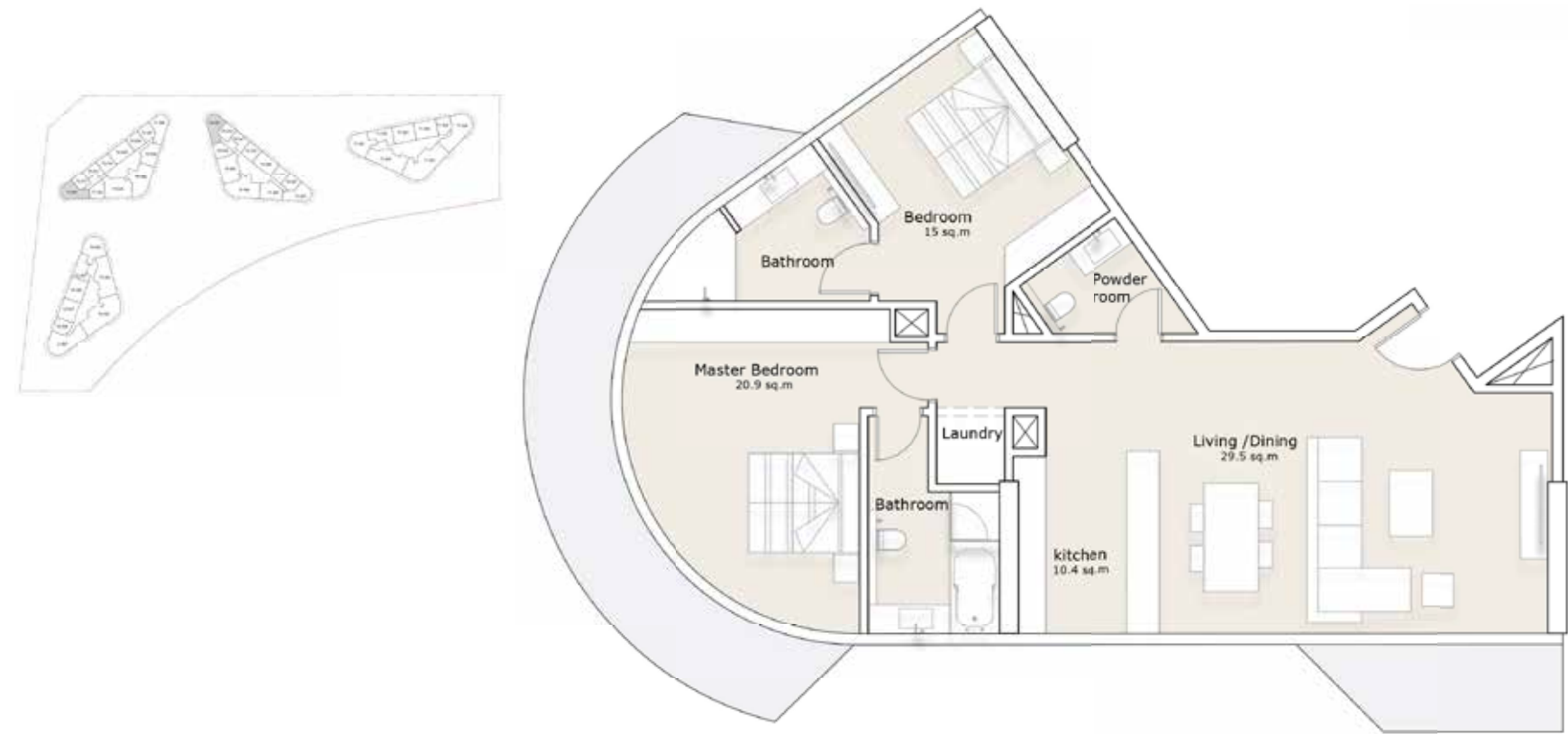
All materials, dimensions, and drawings are approximate, all images used are for illustrative purposes only. Information is subject to change at developer's discretion, without notice, and developer reserves the right to make revisions without liability.



SEALAVIE

2-Bedroom Apartment

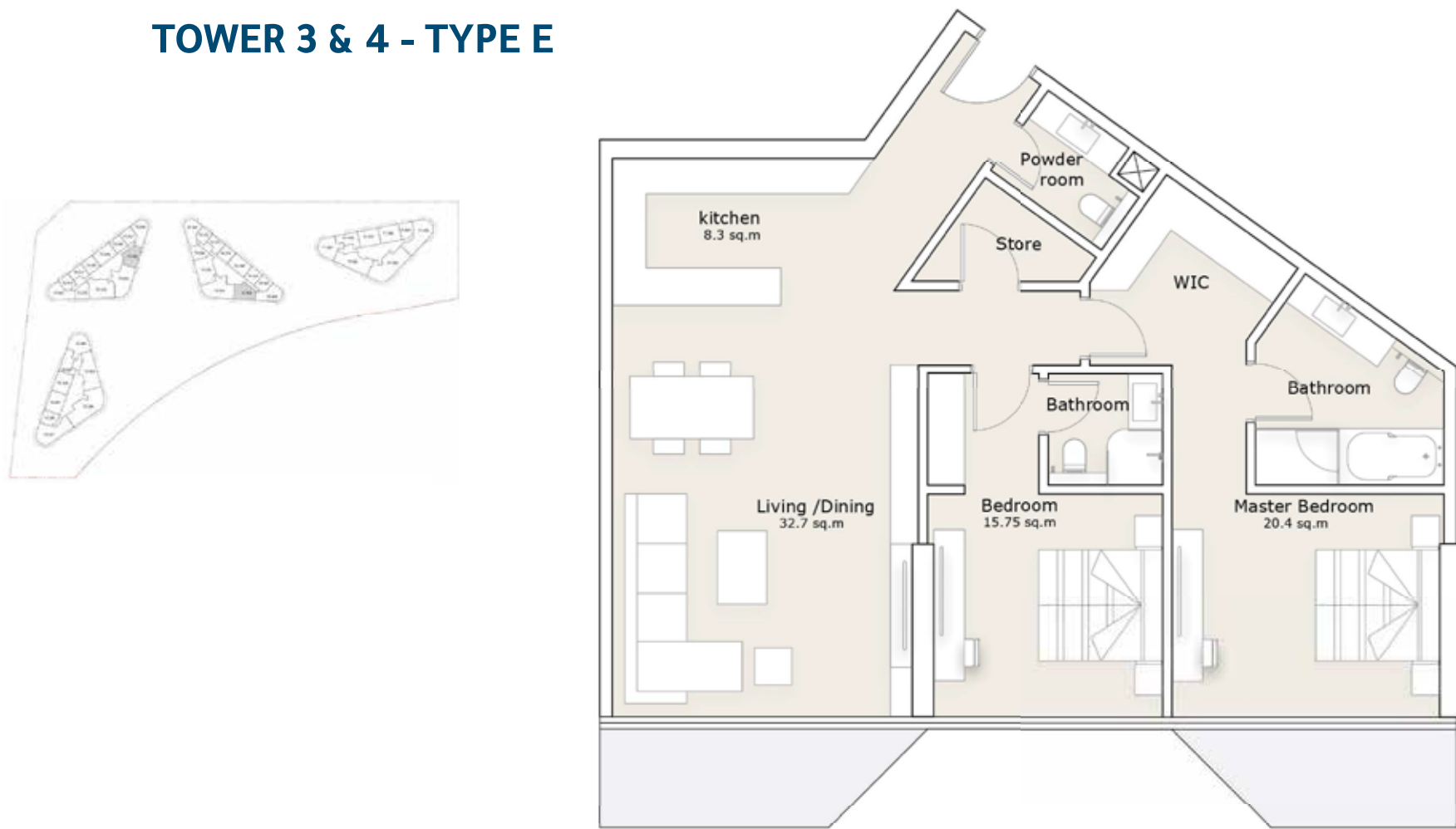
TOWER 3 & 4 - TYPE D



All materials, dimensions, and drawings are approximate, all images used are for illustrative purposes only. Information is subject to change at developer's discretion, without notice, and developer reserves the right to make revisions without liability.

2-Bedroom Apartment

TOWER 3 & 4 - TYPE E

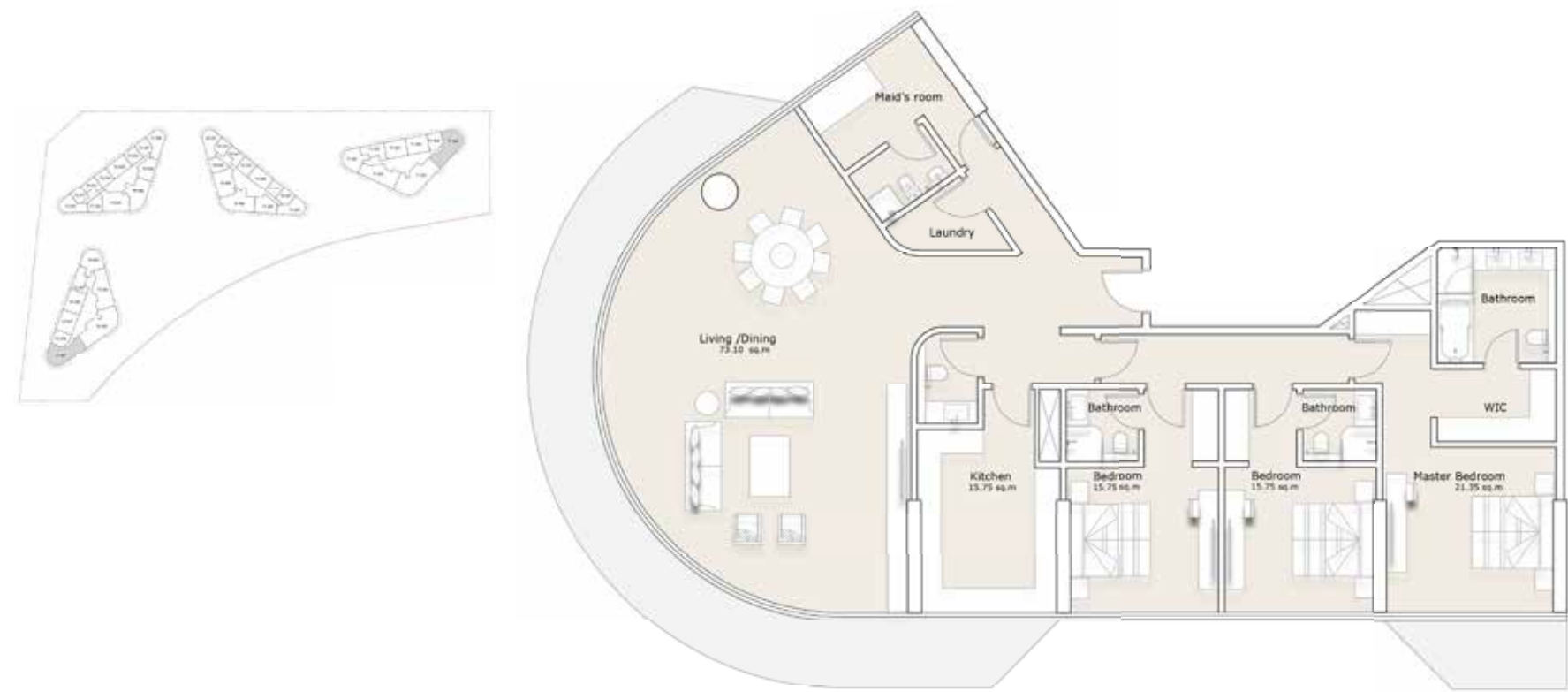


All materials, dimensions, and drawings are approximate, all images used are for illustrative purposes only. Information is subject to change at developer's discretion, without notice, and developer reserves the right to make revisions without liability.



3-Bedroom Apartment

TOWER 1 & 2 - TYPE A



3-Bedroom Apartment

TOWER 1 & 2 - TYPE B



3-Bedroom Apartment

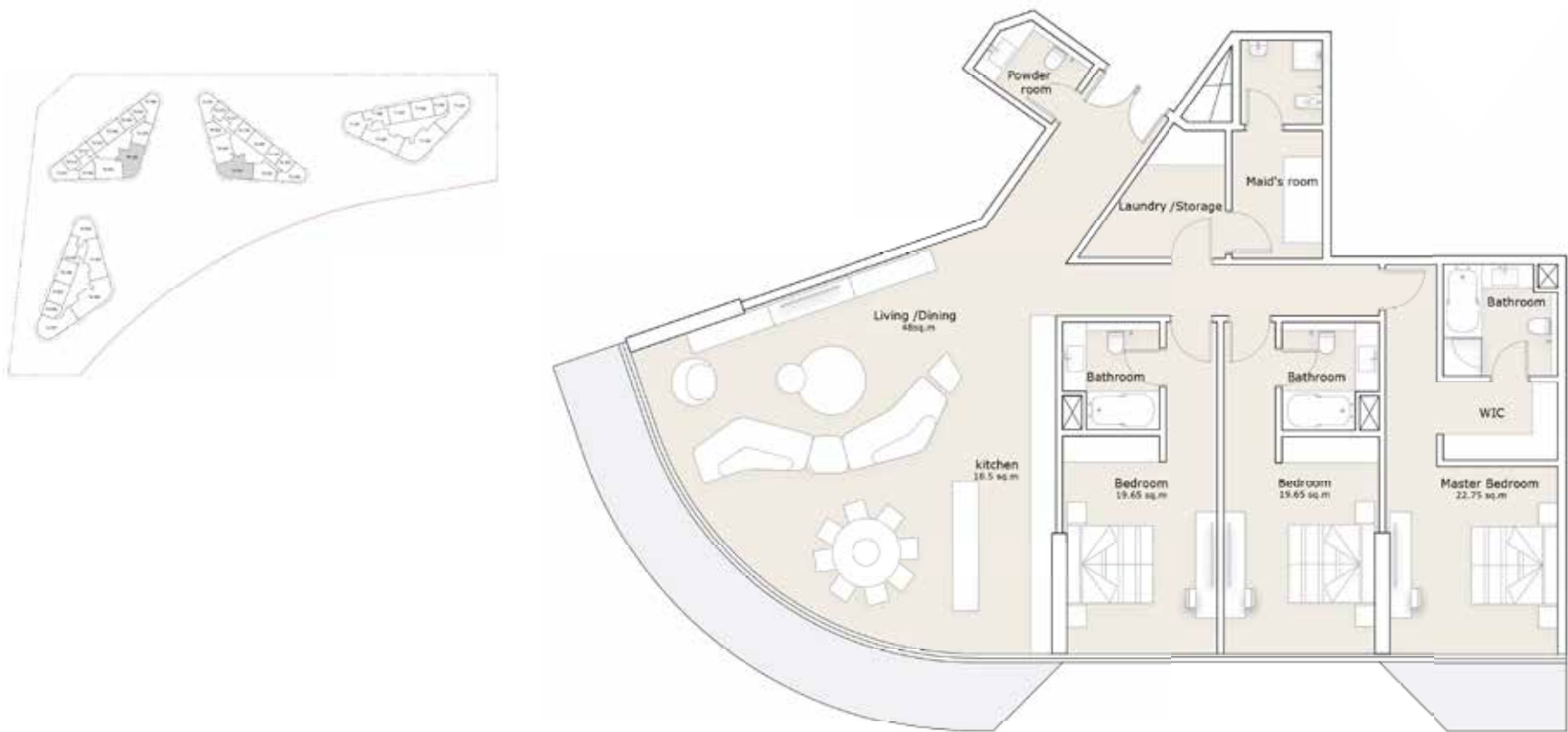
TOWER 3 & 4 - TYPE C



All materials, dimensions, and drawings are approximate, all images used are for illustrative purposes only. Information is subject to change at developer's discretion, without notice, and developer reserves the right to make revisions without liability.

3-Bedroom Apartment

TOWER 3 & 4 - TYPE D



All materials, dimensions, and drawings are approximate, all images used are for illustrative purposes only. Information is subject to change at developer's discretion, without notice, and developer reserves the right to make revisions without liability.



SEALAVIE

4-Bedroom Apartment

TOWER 1 & 2 - TYPE A



All materials, dimensions, and drawings are approximate, all images used are for illustrative purposes only. Information is subject to change at developer's discretion, without notice, and developer reserves the right to make revisions without liability.



Real Estate Development

    [nineyardsae](https://www.nineyardsae.com)

Leaf Tower, Al Maryah Street, Al Reem Island, Abu Dhabi, United Arab Emirates.
800 992737 | www.nineyards.ae


Project Number: 2023/176037 | Permit Number: 202300945732



THANKS FOR WATCHING


CONTACT US FOR MORE INFORMATION

 www.svrealstate.agency

 [svrealstate_agency](https://t.me/svrealstate_agency)

 [svrealstate_agency](https://wa.me/svrealstate_agency)

 svrealstate@agency

 +9 909 999 99 99