



YOU ARE A GUIDE TO THE
WORLD OF LUXURY



SOBHA SEAHAVEN

TOWER B

The sea has a
new address



Take your imagination
beyond the horizon



Wake up to the sounds of life
by the water's edge





A Symphony of Splendor and the Sea

Introducing a new tower at Sobha SeaHaven – where the horizon is as boundless as your dreams.

It's a mesmerizing oasis of luxury living nestled along the pristine Dubai Harbour.



*For illustrative purposes only

WELCOME TO



SOBHA SEAHAVEN

TOWER B

The kaleidoscope of colors painted over the sky
raises a toast to live life to the fullest.



A new landmark in the seascape

After the stunning success of SeaHaven Tower A, comes a new opportunity at Sobha SeaHaven Tower B.

It's a whole new tower rising from the heart of Dubai Harbor with views of Palm Jumeirah and Ain Dubai.



*For illustrative purposes only

The stunning backdrops of sea, mesmerising skyline,
and vibrant city make it a story to be told.

Glancing at the landmarks, Sobha SeaHaven Tower B
is a waterfront living redefined.

The truth is
in the details

SeaHaven tower's sail-inspired design against the canvas of the sea and sleek silhouette creates a sense of movement. It takes cues from the elegant superyachts with their fluid lines and clean angles. Capturing the essence of the sea.

To make a statement, the facade blends high-quality materials, rich woods, refined metals, glass, and steel.



For illustrative purposes only



*For illustrative purposes only

From the foyer, enter your exquisitely designed suite. Its open-concept layout and floor-to-ceiling windows mimic the panoramic views from a yacht's deck.

Every element is designed for timeless elegance - sumptuous furnishings, custom millwork, and handcrafted cabinetry makes the difference between ordinary and extraordinary living.

Twice is nice

The Sealaven towers are connected by a stunning sky bridge, giving you twice the experience.





For illustrative purposes only

Where
Amenities
become essentials

At SeaHaven Tower B, your every desire is met with effortless grace.
Extravagance knows no bounds, and every whim is catered to.

Surrender to blissful rejuvenation. Let your senses be tantalized.
Here over-the-top indulgences are not luxuries but the essence.

Indoor and Outdoor
Amenities



SOBHA SEAHAVEN



Health club with Sauna & Steam
Changing Room

Indoor Cinema



Indoor Game Room
Serviced Club Lounge



Indoor Gym



Pool Deck



Yoga Zone / Meditation Zone

Infinity edge leisure pool facing harbor
with kid's pool



Day Bed



Outdoor Gym

Family Zone with Barbeque Area



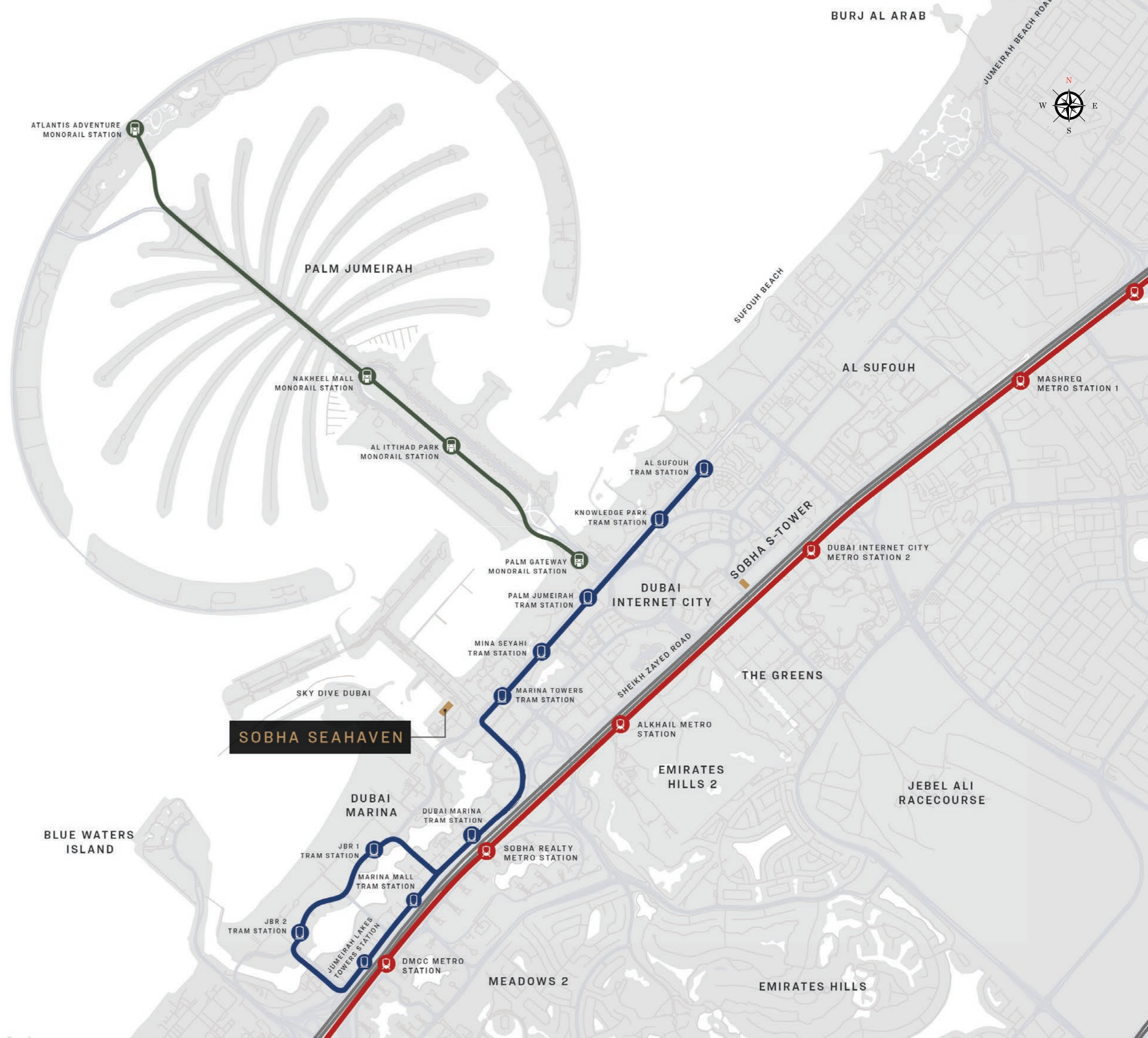
Outdoor Kids' Play Area



Outdoor Cinema



Location Map





Site Plan

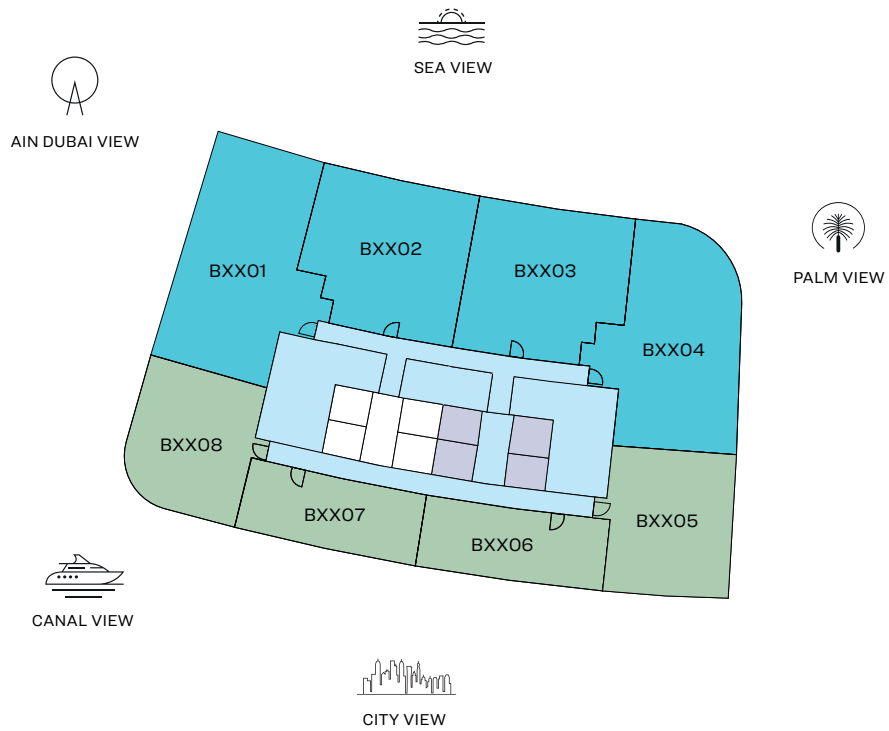
FLOOR AND UNIT PLAN
LAYOUTS



SOBHA SEAHAVEN

FLOOR PLAN LAYOUT

TOWER B



LEVEL 11 - 31

- 1 BED UNIT
- 2 BED UNIT
- LOBBIES, CORRIDORS & STAIRS
- LIFTS

Disclaimer: 1. All dimensions are in metric, measured to wall finishes. 2. All materials, dimensions & drawings are approximate. 3. Information is subject to change without notice, at developer's absolute discretion. 4. Actual area may vary from the stated area. 5. Drawing are not to scale. 6. All images used are for illustrative purpose only and do not represent the actual size, features, specifications, fittings and furnishings. 7. The developer reserves the right to make revisions/ alterations, at its absolute discretion, without any liability whatsoever.

2 BEDROOM APARTMENT

TYPE E (with powder room + balcony)

TOTAL SALEABLE AREA

SUITE = 1,749.78 SQ.FT.

BALCONY = 273.30 SQ.FT.

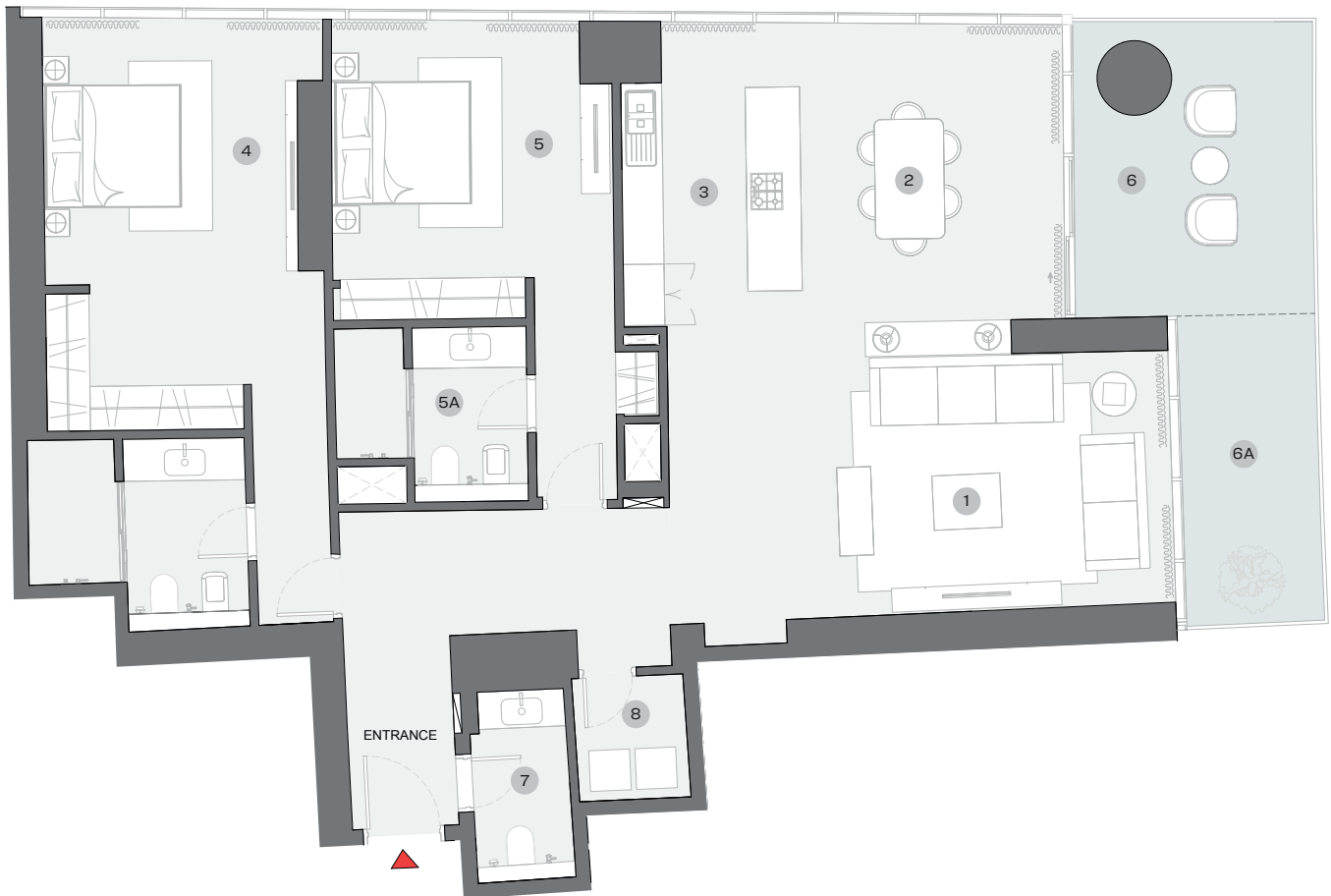
TOTAL = 2,023.08 SQ.FT.



UNIT



LEVEL 11 - 31



List of unit numbers with this unit plan:

VIEWS

Blue waters, Ain Dubai, Palm Jumeirah, Harbour, Sea, Skydive
B1101, B1201, B1301, B1401, B1501, B1601, B1701, B1801, B1901,
B2001, B2101, B2201, B2301, B2401, B2501, B2601, B2701, B2801,
B2901, B3001, B3101

DIMENSIONS (MM)

1 LIVING - 7400 X 3700	4 MASTER BEDROOM - 3700 X 5350	6 BALCONY 1 - 3500 X 4300
2 DINING - 3850 X 4800	4A MASTER BATHROOM - 3200 X 2850	6A BALCONY 2 - 2000 X 4500
3 KITCHEN - 2600 X 4000	5 BEDROOM 2 - 4100 X 4000	7 POWDER - 1450 X 3000
	5A BATHROOM 2 - 2800 X 2550	8 UTILITY - 1650 X 1850

Disclaimer: 1. All dimensions are in metric, measured to wall finishes. 2. All materials, dimensions & drawings are approximate. 3. Information is subject to change without notice, at developer's absolute discretion. 4. Actual area may vary from the stated area. 5. Drawing are not to scale. 6. All images used are for illustrative purpose only and do not represent the actual size, features, specifications, fittings and furnishings. 7. The developer reserves the right to make revisions/ alterations, at its absolute discretion, without any liability whatsoever.

2 BEDROOM APARTMENT

TYPE F (with powder room + balcony)

TOTAL SALEABLE AREA

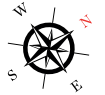
SUITE = 1,273.48 SQ.FT.

BALCONY = 396.76 SQ.FT.

TOTAL = 1,670.24 SQ.FT.



UNIT



List of unit numbers with this unit plan:

VIEWS

Palm Jumeirah, Harbour, Sea

B1102, B1202, B1302, B1402, B1502, B1602, B1702, B1802, B1902, B2002, B2102, B2202, B2302, B2402, B2502, B2602, B2702, B2802, B2902, B3002, B3102

DIMENSIONS (MM)

1 LIVING - 4200 X 4100	4 MASTER BEDROOM - 3900 X 4450	6 BALCONY 1 - 8100 X 3100
2 DINING - 4300 X 2800	4A MASTER BATHROOM - 3000 X 2600	6A BALCONY 2 - 4650 X 2000
3 KITCHEN - 2800 X 2500	5 BEDROOM 2 - 3650 X 3650	7 POWDER - 1800 X 2200
	5A BATHROOM 2 - 2600 X 2600	8 UTILITY - 850 X 1500

Disclaimer: 1. All dimensions are in metric, measured to wall finishes. 2. All materials, dimensions & drawings are approximate. 3. Information is subject to change without notice, at developer's absolute discretion. 4. Actual area may vary from the stated area. 5. Drawing are not to scale. 6. All images used are for illustrative purpose only and do not represent the actual size, features, specifications, fittings and furnishings. 7. The developer reserves the right to make revisions/ alterations, at its absolute discretion, without any liability whatsoever.

2 BEDROOM APARTMENT

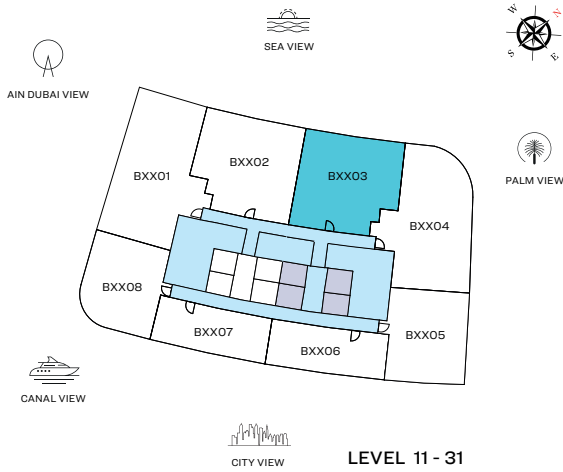
TYPE G (with powder room + balcony)

TOTAL SALEABLE AREA

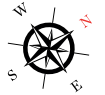
SUITE = 1,270.57 SQ.FT.

BALCONY = 394.50 SQ.FT.

TOTAL = 1,665.07 SQ.FT.



UNIT



List of unit numbers with this unit plan:

VIEWS

Palm Jumeirah, Harbour, Sea

B1103, B1203, B1303, B1403, B1503, B1603, B1703, B1803, B1903, B2003, B2103, B2203, B2303, B2403, B2503, B2603, B2703, B2803, B2903, B3003, B3103

DIMENSIONS (MM)

1 LIVING - 4150 X 4050	4 MASTER BEDROOM - 3800 X 4450	6 BALCONY 1 - 8000 X 3100
2 DINING - 4300 X 2800	4A MASTER BATHROOM - 3000 X 2600	6A BALCONY 2 - 4600 X 2000
3 KITCHEN - 2850 X 2500	5 BEDROOM 2 - 3800 X 3650	7 POWDER - 1850 X 1950
	5A BATHROOM 2 - 2600 X 2600	8 UTILITY - 850 X 1500

Disclaimer: 1. All dimensions are in metric, measured to wall finishes. 2. All materials, dimensions & drawings are approximate. 3. Information is subject to change without notice, at developer's absolute discretion. 4. Actual area may vary from the stated area. 5. Drawing are not to scale. 6. All images used are for illustrative purpose only and do not represent the actual size, features, specifications, fittings and furnishings. 7. The developer reserves the right to make revisions/ alterations, at its absolute discretion, without any liability whatsoever.

2 BEDROOM APARTMENT

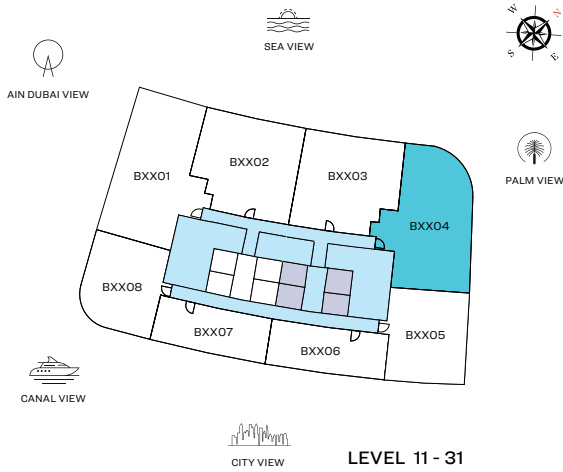
TYPE H (with powder room + balcony)

TOTAL SALEABLE AREA

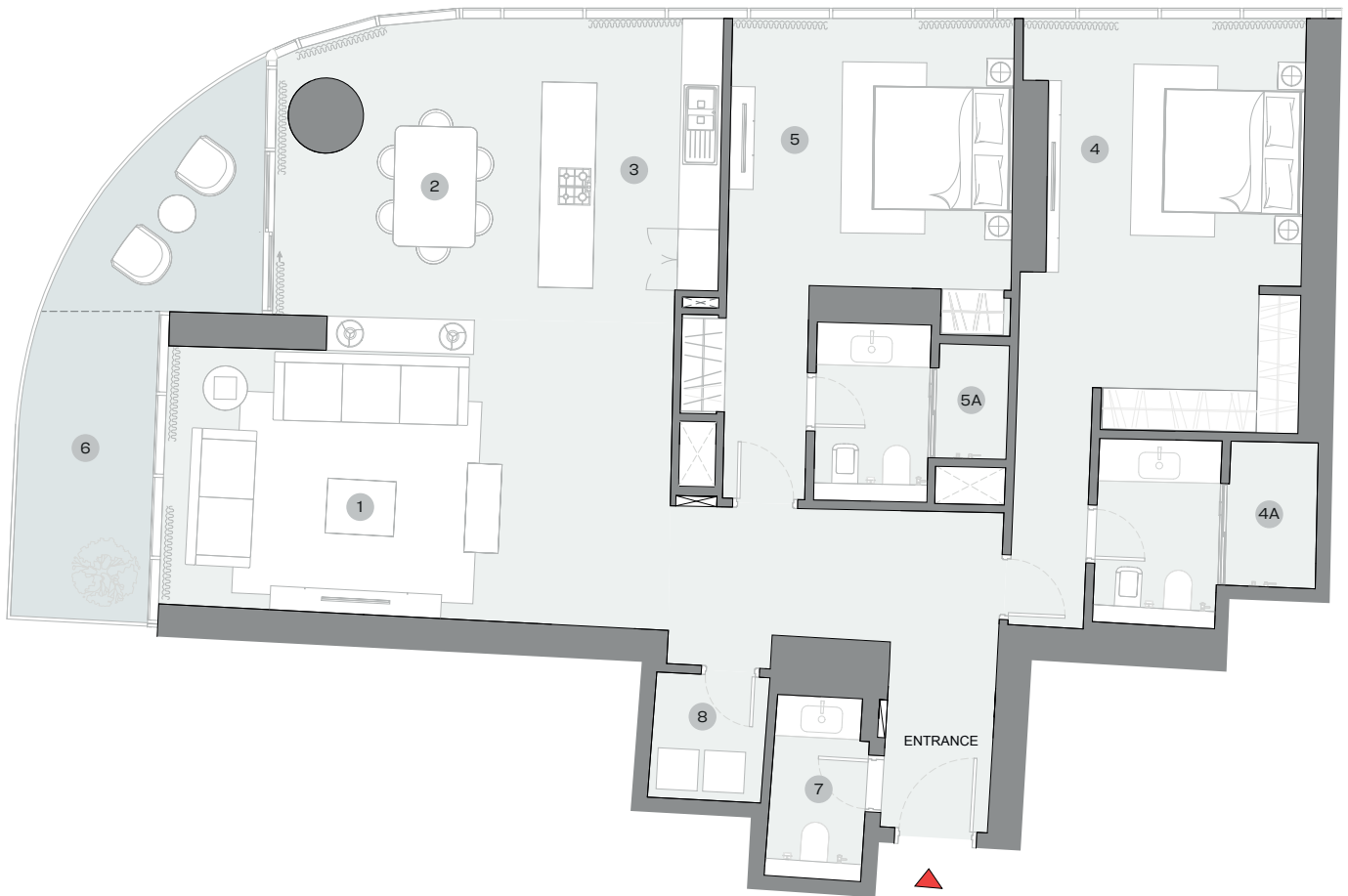
SUITE = 1,740.63 SQ.FT.

BALCONY = 189.65 SQ.FT.

TOTAL = 1,930.28 SQ.FT.



LEVEL 11 - 31



List of unit numbers with this unit plan:

VIEWS

Palm Jumeirah, Harbour, Sea

B1104, B1204, B1304, B1404, B1504, B1604, B1704, B1804, B1904, B2004, B2104, B2204, B2304, B2404, B2504, B2604, B2704, B2804, B2904, B3004, B3104

DIMENSIONS (MM)

1 LIVING - 7400 X 3850	4 MASTER BEDROOM - 3700 X 5350	6 BALCONY - 2000 X 4550
2 DINING - 4000 X 4900	4A MASTER BATHROOM - 3200 X 2700	7 POWDER - 1400 X 2850
3 KITCHEN - 2600 X 3950	5 BEDROOM 2 - 4150 X 3850	8 UTILITY - 1650 X 1850
	5A BATHROOM 2 - 2800 X 2550	

Disclaimer: 1. All dimensions are in metric, measured to wall finishes. 2. All materials, dimensions & drawings are approximate. 3. Information is subject to change without notice, at developer's absolute discretion. 4. Actual area may vary from the stated area. 5. Drawing are not to scale. 6. All images used are for illustrative purpose only and do not represent the actual size, features, specifications, fittings and furnishings. 7. The developer reserves the right to make revisions/ alterations, at its absolute discretion, without any liability whatsoever.

1 BEDROOM + STUDY APARTMENT

TYPE D (with powder room + balcony)

TOTAL SALEABLE AREA

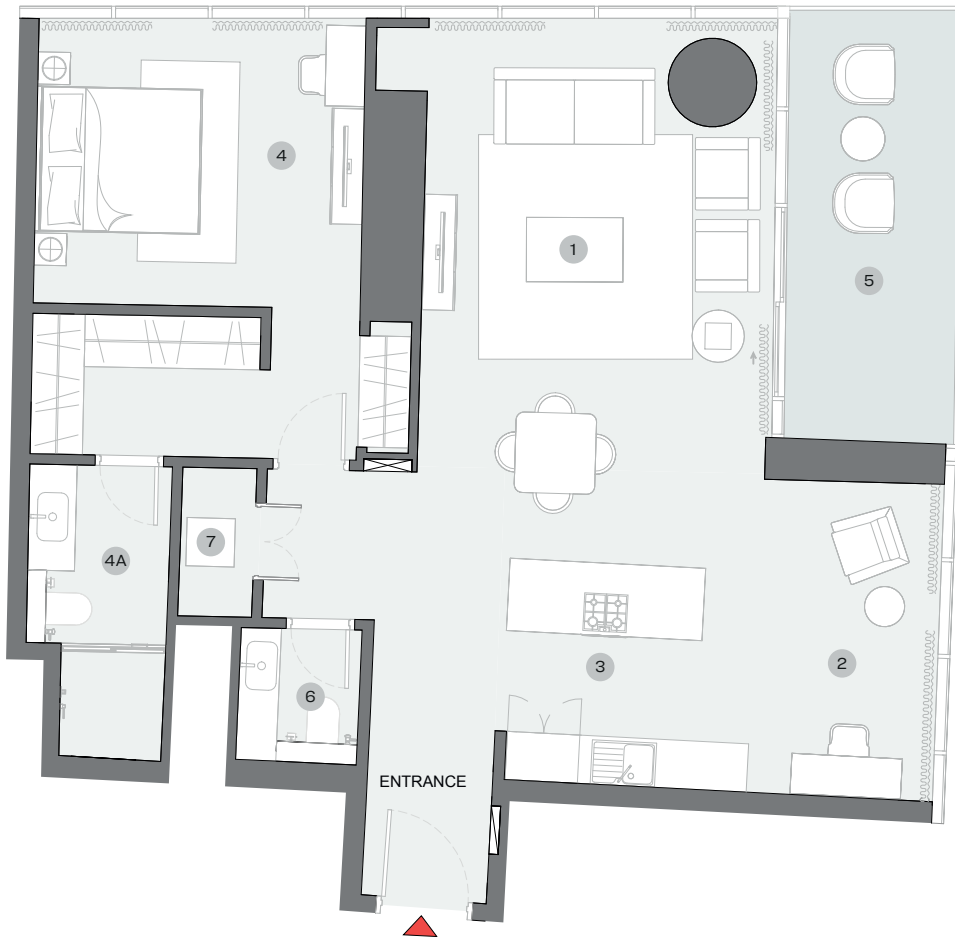
SUITE = 1,102.21 SQ.FT.

BALCONY = 131.43 SQ.FT.

TOTAL = 1,233.64 SQ.FT.



UNIT



List of unit numbers with this unit plan:

VIEWS

Marina Skyline

B1105, B1205, B1305, B1405, B1505, B1605, B1705, B1805, B1905, B2005, B2105, B2205, B2305, B2405, B2505, B2605, B2705, B2805, B2905, B3005, B3105

DIMENSIONS (MM)

1 LIVING/DINING - 4350 X 6700	4 BEDROOM - 4050 X 3550	5 BALCONY - 2150 X 5250
2 STUDY - 2650 X 3950	4A BATHROOM - 1800 X 3600	6 POWDER - 1500 X 1750
3 KITCHEN - 2650 X 2750		7 UTILITY - 900 X 1850

Disclaimer: 1. All dimensions are in metric, measured to wall finishes. 2. All materials, dimensions & drawings are approximate. 3. Information is subject to change without notice, at developer's absolute discretion. 4. Actual area may vary from the stated area. 5. Drawing are not to scale. 6. All images used are for illustrative purpose only and do not represent the actual size, features, specifications, fittings and furnishings. 7. The developer reserves the right to make revisions/ alterations, at its absolute discretion, without any liability whatsoever.

1 BEDROOM APARTMENT

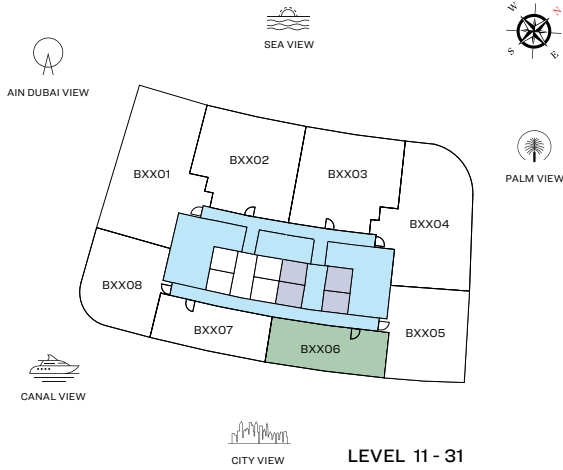
TYPE E (with powder room + balcony)

TOTAL SALEABLE AREA

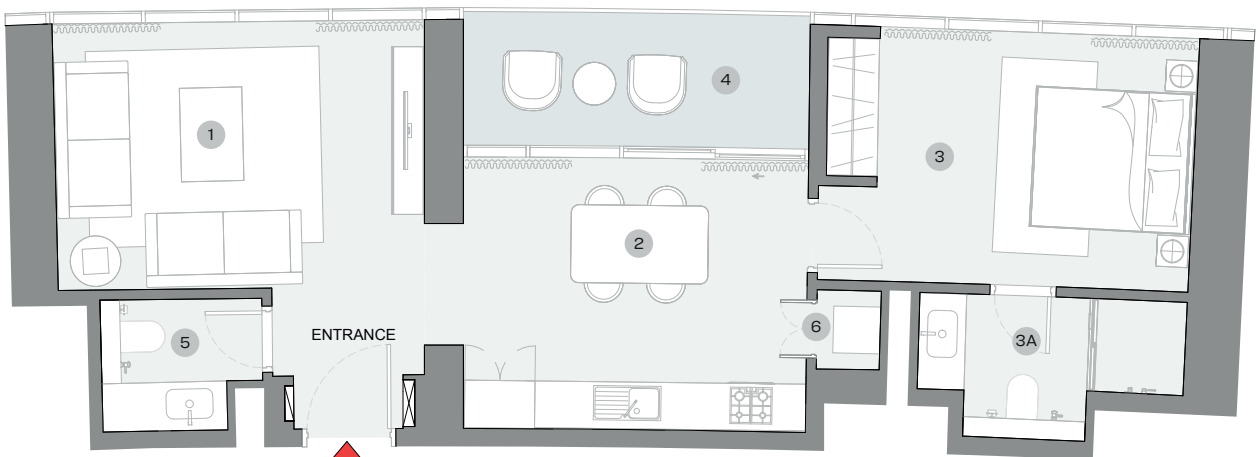
SUITE = 748.85 SQ.FT.

BALCONY = 92.57 SQ.FT.

TOTAL = 841.41 SQ.FT.



UNIT



List of unit numbers with this unit plan:

VIEWS

Marina Skyline

B1106, B1206, B1306, B1406, B1506, B1606, B1706, B1806, B1906, B2006, B2106, B2206, B2306, B2406, B2506, B2606, B2706, B2806, B2906, B3006, B3106

DIMENSIONS (MM)

1 LIVING - 4700 X 3450	3 BEDROOM - 4000 X 3250	4 BALCONY - 4650 X 1700
2 KITCHEN/DINING - 4400 X 3500	3A BATHROOM - 3400 X 1850	5 POWDER - 2050 X 1700
		6 UTILITY - 800 X 1000

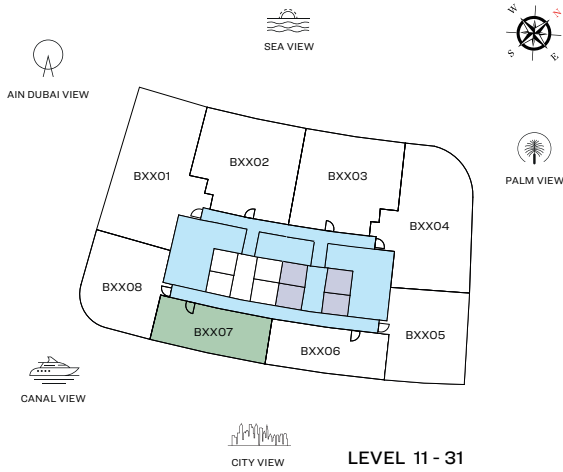
Disclaimer: 1. All dimensions are in metric, measured to wall finishes. 2. All materials, dimensions & drawings are approximate. 3. Information is subject to change without notice, at developer's absolute discretion. 4. Actual area may vary from the stated area. 5. Drawing are not to scale. 6. All images used are for illustrative purpose only and do not represent the actual size, features, specifications, fittings and furnishings. 7. The developer reserves the right to make revisions/ alterations, at its absolute discretion, without any liability whatsoever.

1 BEDROOM APARTMENT

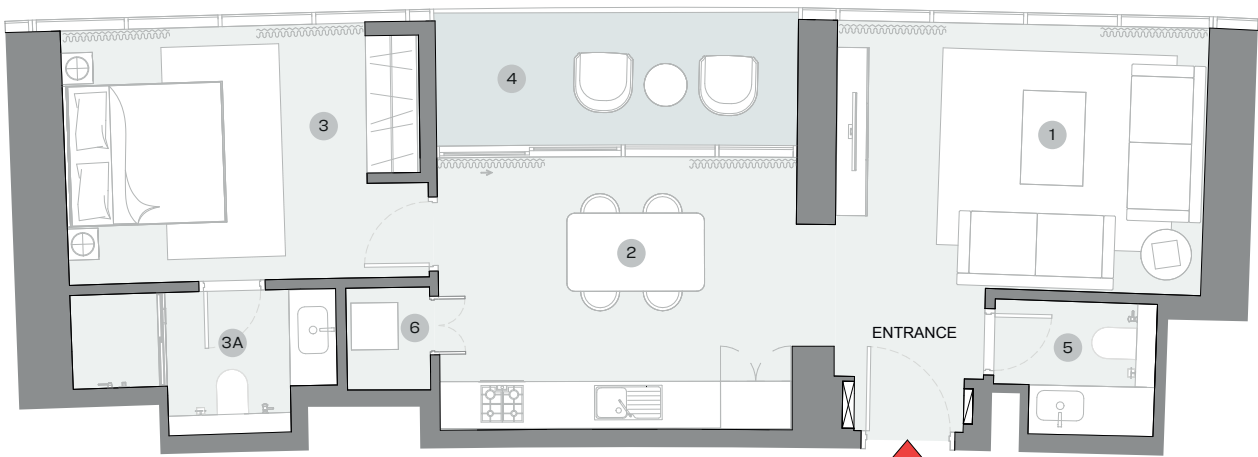
TYPE F (with powder room + balcony)

TOTAL SALEABLE AREA

SUITE = 754.38 SQ.FT.
BALCONY = 96.23 SQ.FT.
TOTAL = 850.61 SQ.FT.



UNIT



List of unit numbers with this unit plan:

VIEWS

Marina Skyline
B1107, B1207, B1307, B1407, B1507, B1607, B1707, B1807, B1907,
B2007, B2107, B2207, B2307, B2407, B2507, B2607, B2707,
B2807, B2907, B3007, B3107

DIMENSIONS (MM)

1 LIVING - 4750 X 3400	3 BEDROOM - 3850 X 3250	4 BALCONY - 4650 X 1700
2 KITCHEN/DINING - 4550 X 3500	3A BATHROOM - 3400 X 1850	5 POWDER - 2100 X 1750
		6 UTILITY - 1050 X 1300

Disclaimer: 1. All dimensions are in metric, measured to wall finishes. 2. All materials, dimensions & drawings are approximate. 3. Information is subject to change without notice, at developer's absolute discretion. 4. Actual area may vary from the stated area. 5. Drawing are not to scale. 6. All images used are for illustrative purpose only and do not represent the actual size, features, specifications, fittings and furnishings. 7. The developer reserves the right to make revisions/ alterations, at its absolute discretion, without any liability whatsoever.

1 BEDROOM + STUDY APARTMENT

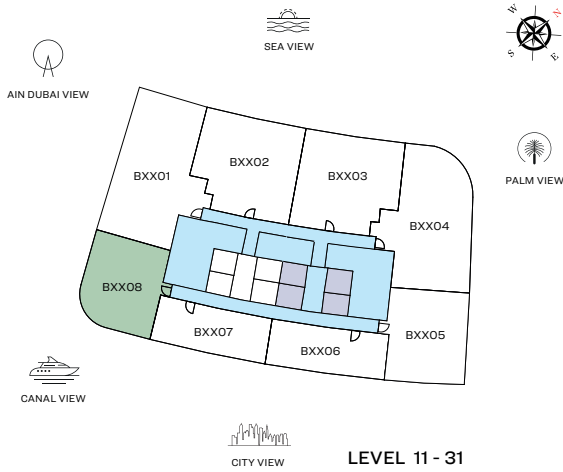
TYPE G (with powder room + balcony)

TOTAL SALEABLE AREA

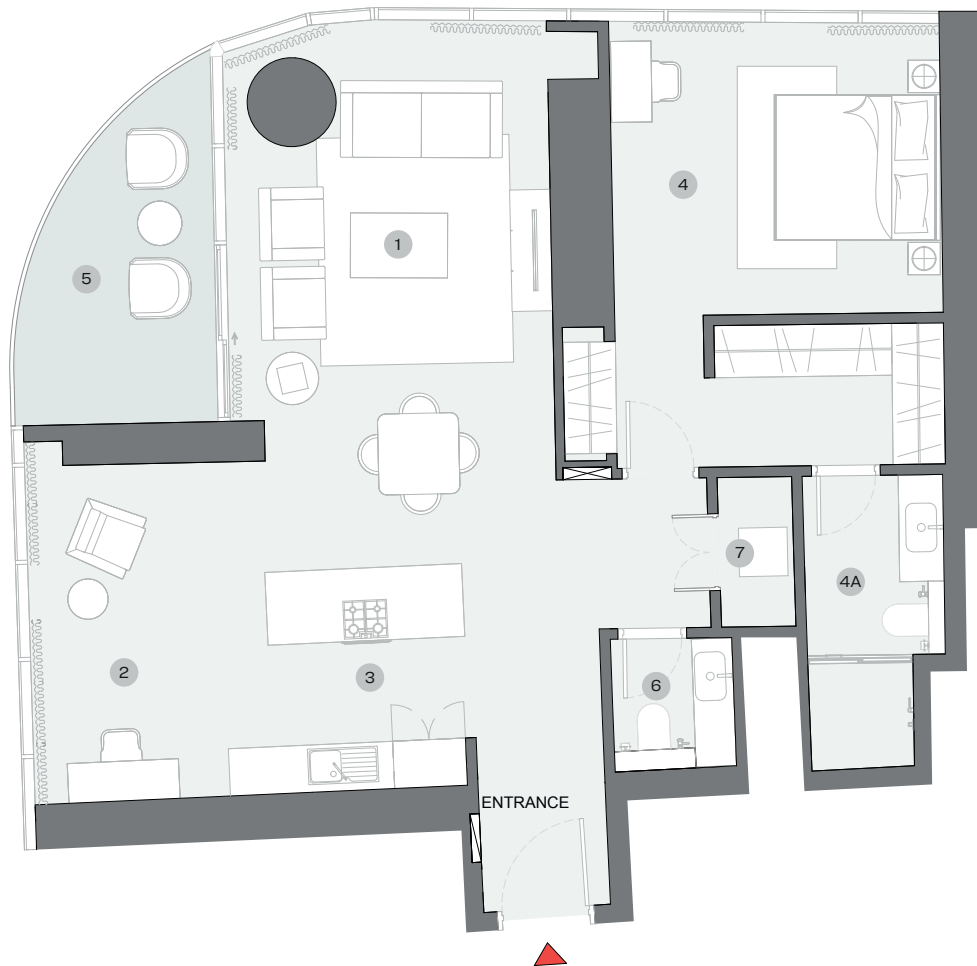
SUITE = 1,086.46 SQ.FT.

BALCONY = 104.15 SQ.FT.

TOTAL = 1,190.62 SQ.FT.



UNIT



List of unit numbers with this unit plan:

VIEWS

Marina Skyline, Sea
B1108

Marina, Marina Skyline, Sea
B1208, B1308, B1408, B1508, B1608, B1708, B1808, B1908, B2008,
B2108, B2208, B2308, B2408, B2508, B2608, B2708, B2808,
B2908, B3008, B3108

DIMENSIONS (MM)

1 LIVING/DINING - 4000 X 6650	4 BEDROOM - 4100 X 3550	5 BALCONY
2 STUDY - 2650 X 4100	4A BATHROOM - 1750 X 3600	6 POWDER - 1500 X 1600
3 KITCHEN - 2650 X 2700		7 UTILITY - 900 X 1850

Disclaimer: 1. All dimensions are in metric, measured to wall finishes. 2. All materials, dimensions & drawings are approximate. 3. Information is subject to change without notice, at developer's absolute discretion. 4. Actual area may vary from the stated area. 5. Drawing are not to scale. 6. All images used are for illustrative purpose only and do not represent the actual size, features, specifications, fittings and furnishings. 7. The developer reserves the right to make revisions/ alterations, at its absolute discretion, without any liability whatsoever.

SOBHA
REALTY

THANKS FOR WATCHING

CONTACT US FOR MORE INFORMATION