



YAS RIVA

Yas Riva is a waterfront community where exclusivity means more than status, it's about living in a place where every detail matters. With elegant design and effortless access to world-class attractions, the water here becomes an extension of your home. This is where luxury meets life and life meets the water.

Property Details	TOTAL NO. OF UNITS: 151 Units	PRICES: Starting price AED 8.3 M
	TYPE OF UNITS: 4 & 5 Inland Villas 5 & 6 Canal Villas	PAYMENT PLAN: 50/50 payment plan 5% down payment
	HANDOVER DATE: Q3 2028	LOCATION: Yas Island Yas Gateway

AMENITIES

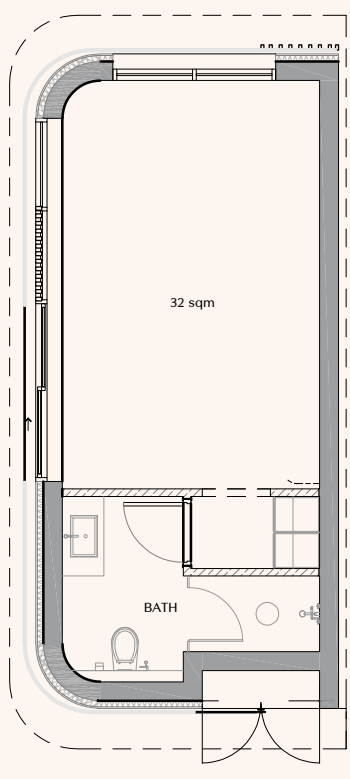
The View Clubhouse	Sauna	Steam room
Treatment room	Workout area	Yoga studio
Meditation area	F&B seating	Swimming Pools (Adults and kids)
Forte Fitness Centre	Water play (Interactive Pond)	Community-wide cycle track
Community market	BBQ & Picnic areas	Pocket parks
Fitness area	Kids play areas	Spa
Community pavilion	Sand playground	Wavy lawn
Outdoor Amphitheater	Climbing play	Table tennis
Splash pad	Outdoor gym	2 padel courts
Jogging track	Relaxation spot	

CHOICE TO INCLUDE

1. MULTIPURPOSE ROOM (POD)

GSA – 32 sqm

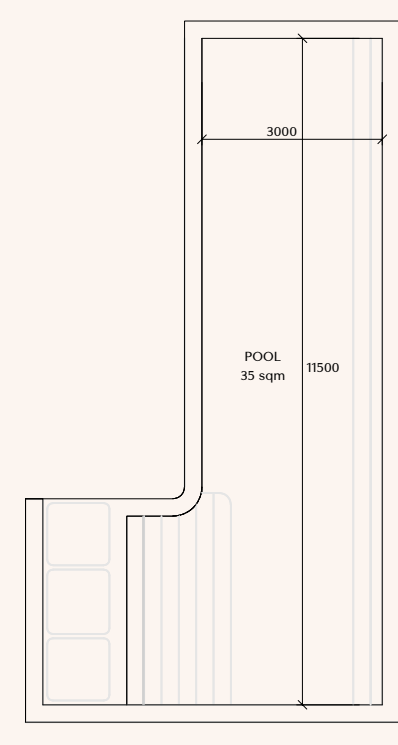
Available for both canal and inland villa types.



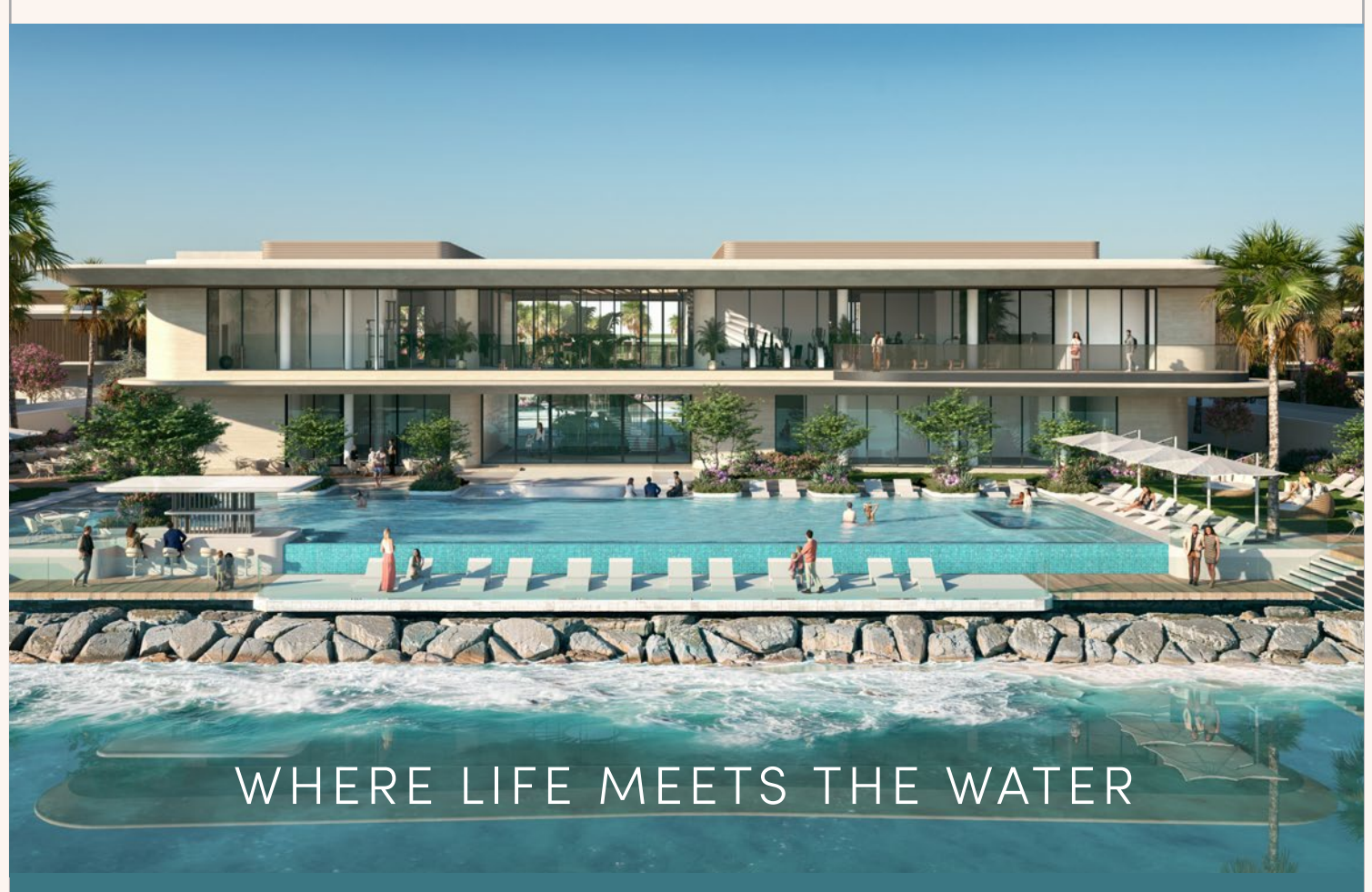
LAYOUT

2. POOL

Available for both canal and inland villa types.



CANAL UNITS LAYOUT



WHERE LIFE MEETS THE WATER

*Price, payment, views and availability are indicative; they are subject to change. Terms & Conditions apply.