

YOU ARE A GUIDE TO THE  
WORLD OF LUXURY



A woman with dark hair and a green feathered necklace is looking through tall reeds. The background is filled with large palm leaves, creating a lush tropical atmosphere. The lighting is soft and natural, highlighting the textures of the plants and the woman's features.

# GRANADA II

## FACT SHEET

 RAK  
PROPERTIES



Experience the Fusion of  
Tradition and Modernity







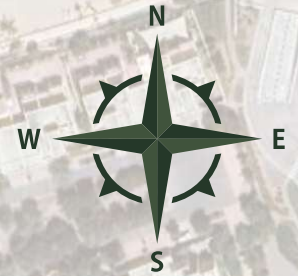
Mina Al Arab introduces the extension of its cherished Granada community, where the allure of nature meets contemporary living. Granada Townhouses II is a residential paradise, offering exclusive townhouses that blend seamlessly into the vibrant landscape of Ras Al Khaimah.





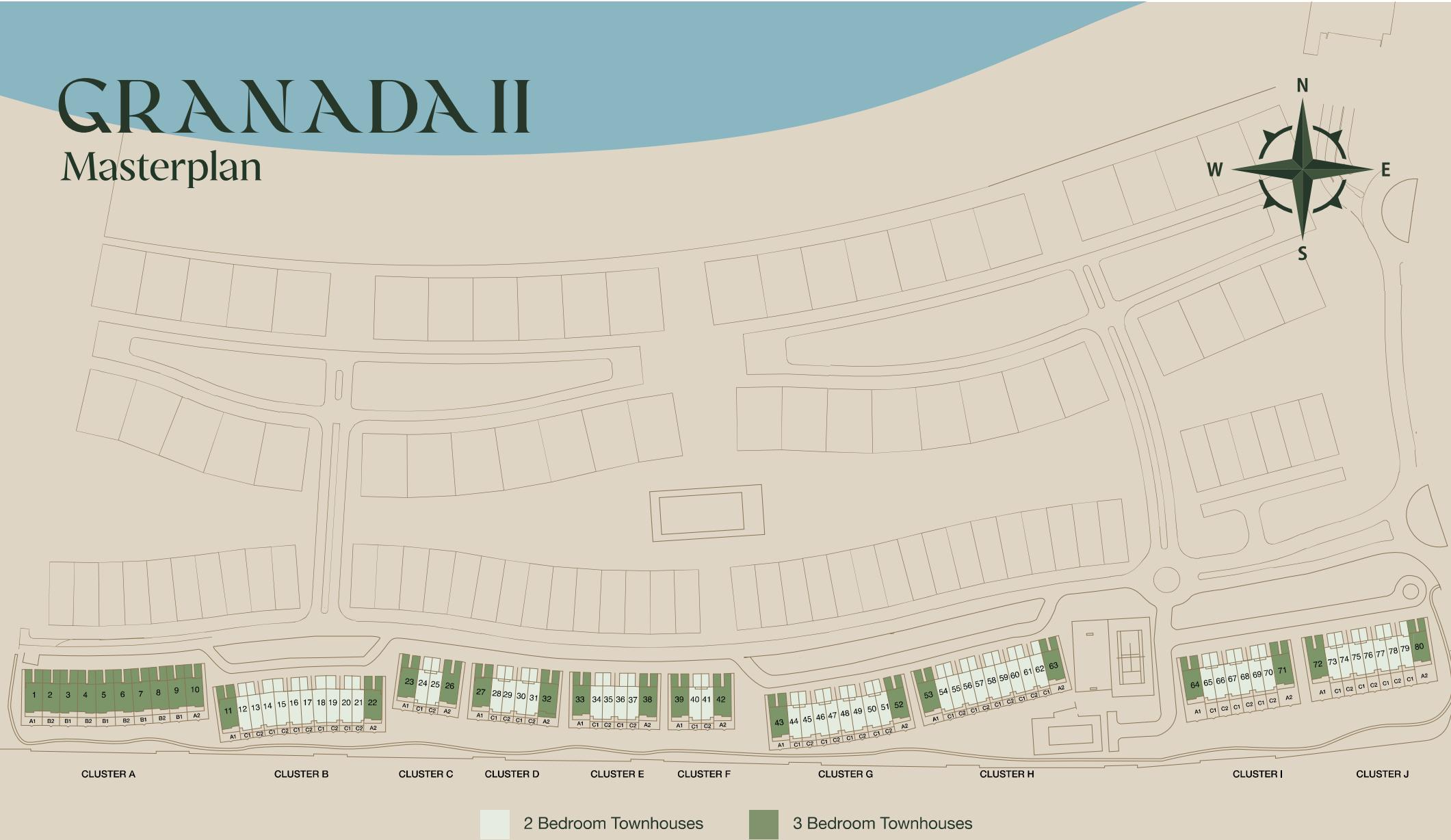
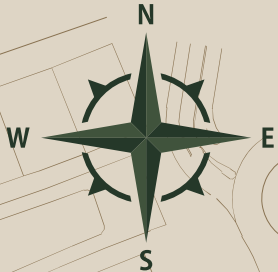
# GRANADA II

## Masterplan



# GRANADA II

## Masterplan









## Unit Mix: Areas & Price

TYPE	NO. OF UNITS	AVERAGE AREA SQFT
2 Bedroom Townhouses	52	1831
3 Bedroom Townhouses	28	2224



## Payment Plan

Standard*	50/50
2-Years Post-Handover*	50/50

10% downpayment  
Completion Date: Q1-2026

**Disclaimer:** Prices, payment plans, and related property transaction details may change without prior notice. Terms and conditions apply.



# Living Amenities

## Family-Centric Spaces



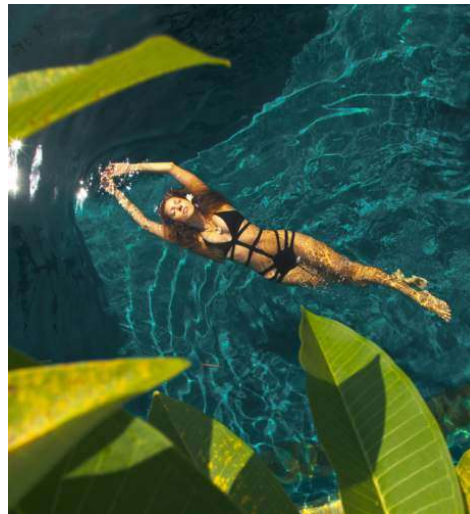
A warm and welcoming community, ideal for families and holiday-goers including parks and children's play area.

## Lush Landscaping



Immersive gardens with jogging paths and tree-lined avenues that connect you to the heart of Mina Al Arab.

## Private Beach Access



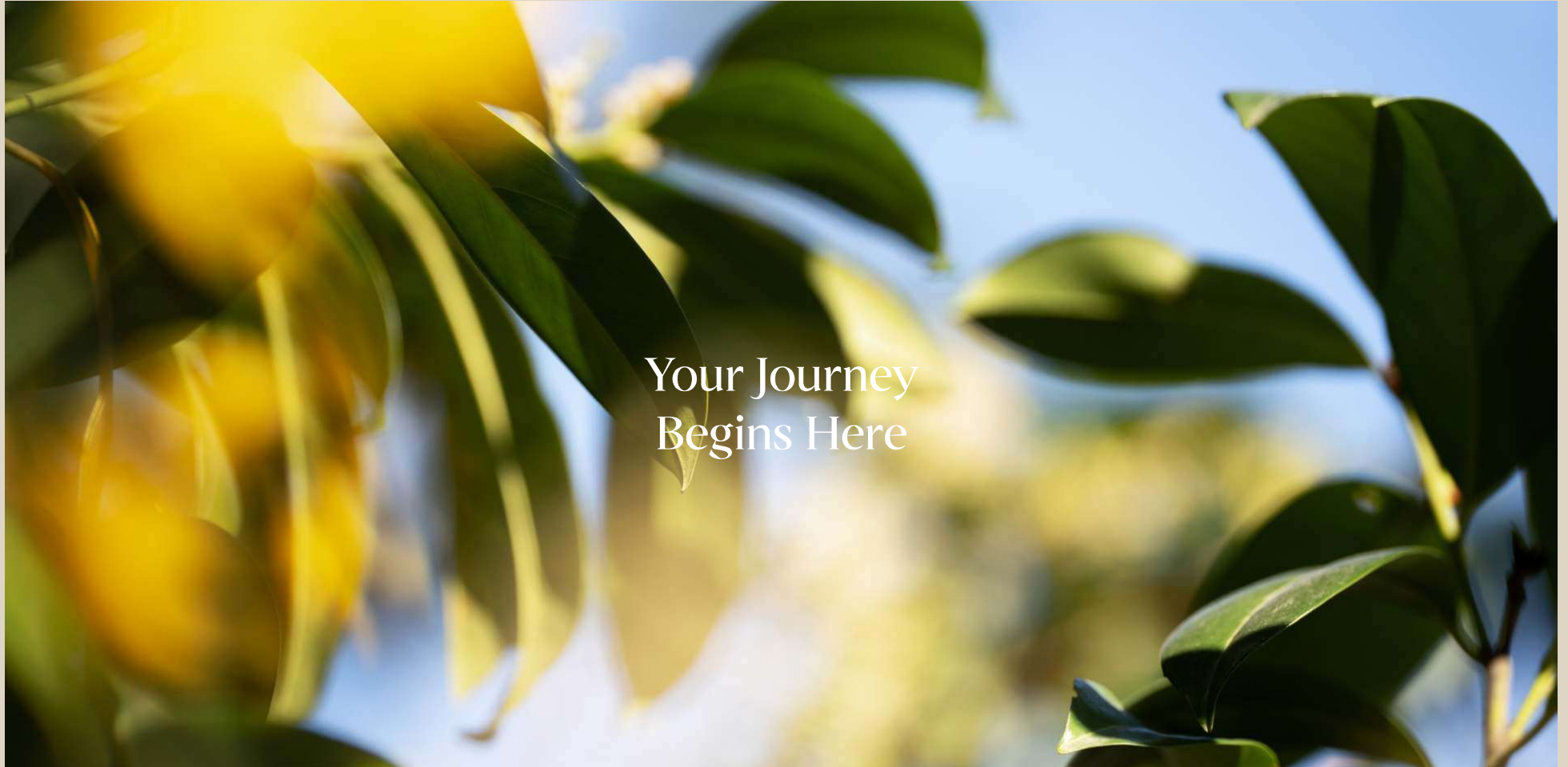
Step from your door to sandy shores within one minute, exclusive to Granada II residents.

## Your Active Escape



Embrace a healthy lifestyle with our sports facilities and scenic trails.





Your Journey  
Begins Here






# THANKS FOR WATCHING

CONTACT US FOR MORE INFORMATION

 [www.svrealstate.agency](http://www.svrealstate.agency)

 [svrealstate\\_agency](https://t.me/svrealstate_agency)

 [svrealstate\\_agency](https://wa.me/svrealstate_agency)

 [svrealstate@agency](mailto:svrealstate@agency)

 +9 909 999 99 99