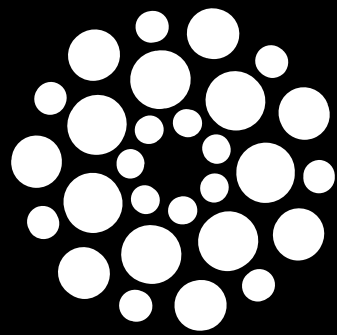




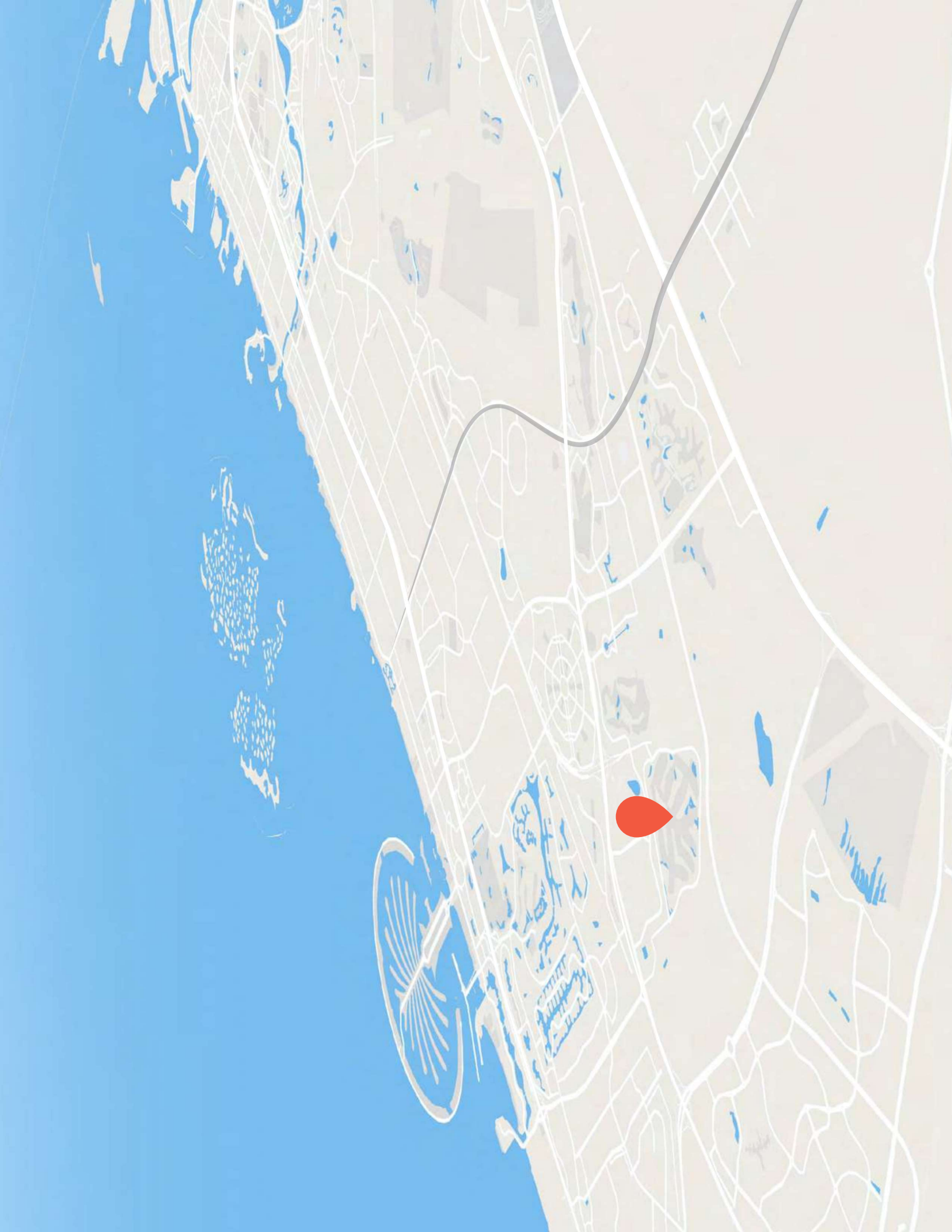
YOU ARE A GUIDE TO THE
WORLD OF LUXURY



Jouri Hills

at Jumeirah Golf Estates













Living well never felt this easy

Every home enjoys direct access to greenery through the garden, with a beautifully landscaped community park just a few minutes' walk away.

Make the most of a network of leafy footpaths and cycling tracks, as well as an array of sports facilities and a

children's adventure playground located in the park.

Residents can also access the Wellfit fitness center in the heart of the community, which contains high-end equipment and qualified trainers.

Smart home technology for every home



Large living spaces designed to facilitate entertainment and leisure



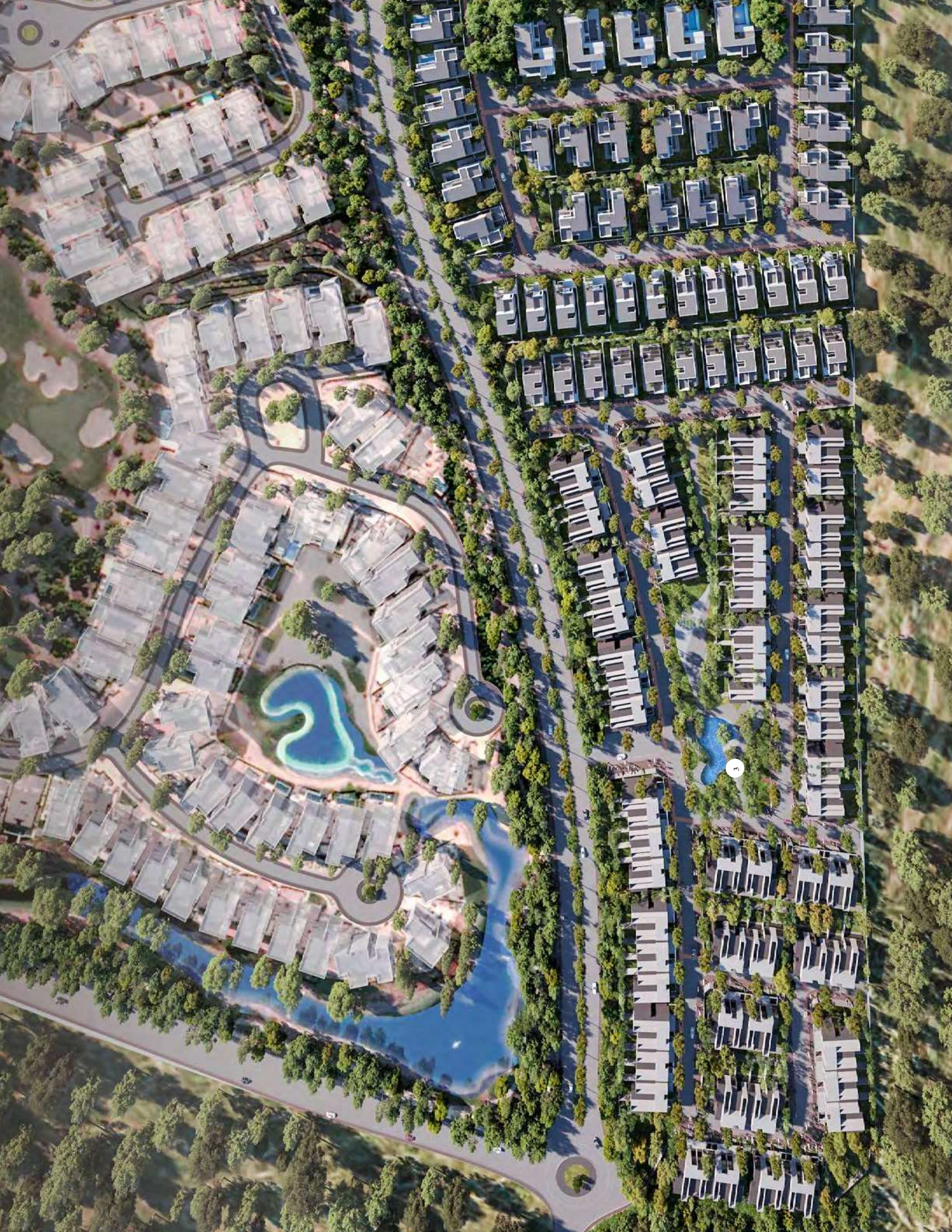
Contemporary home designs with nature-inspired touches



Swimming pools as standard for detached homes













3 Bedroom Jouri Hills Townhouse - A

Ground Floor:

1,685 sq. ft.

First Floor:

1,475 sq. ft.

Total:

3,160 sq. ft.

Ground floor





3 Bedroom Jouri Hills Townhouse - B

Ground Floor:

1,685 sq. ft.

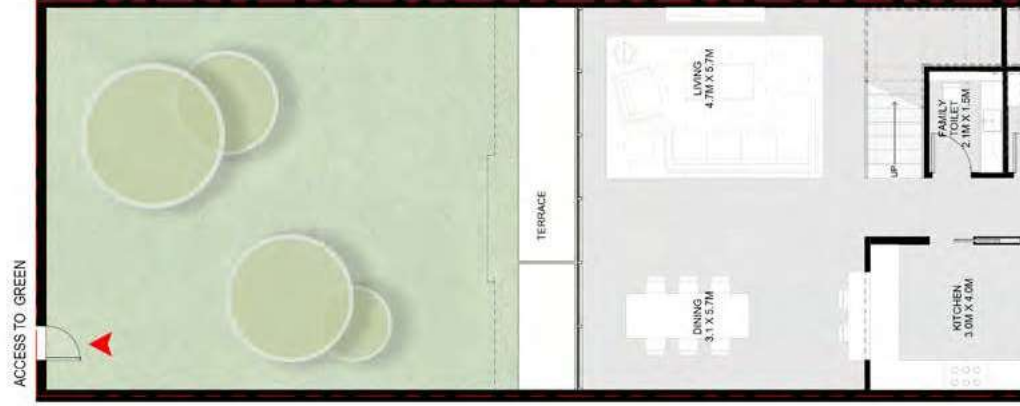
First Floor:

1,475 sq. ft.

Total:

3,160 sq. ft.

Ground floor







4 Bedroom Jouri Hills Townhouse - A

Ground Floor:

2,147 sq. ft.

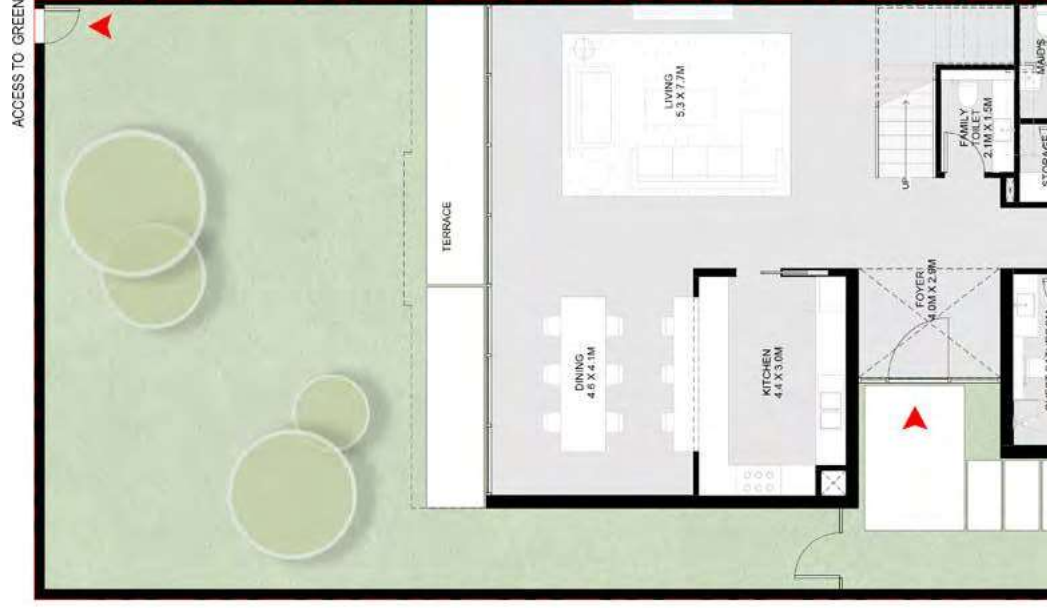
First Floor:

1,850 sq. ft.

Total:

3,997 sq. ft.

Ground floor





4 Bedroom Jouri Hills Townhouse - B

Ground Floor:

2,147 sq. ft.

First Floor:

1,850 sq. ft.

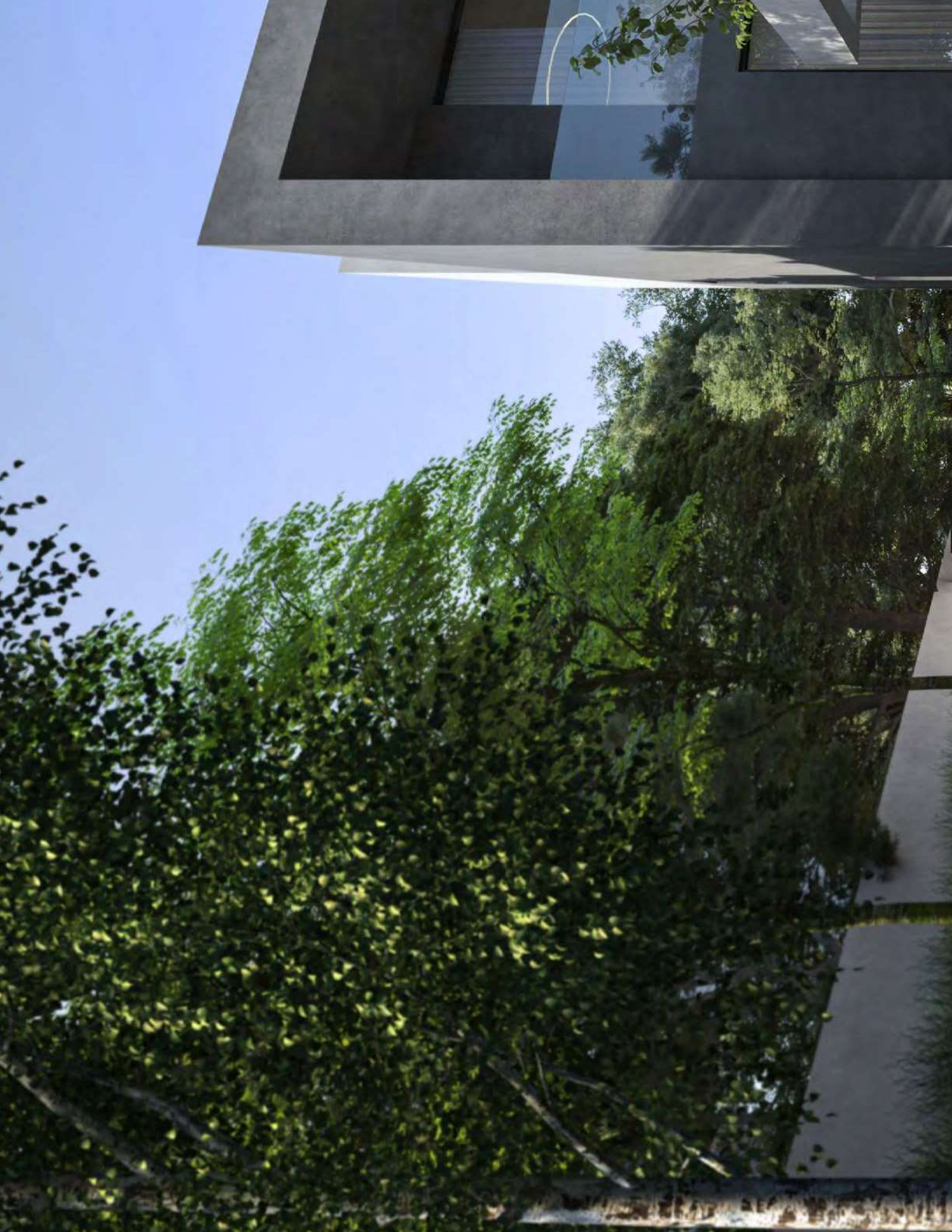
Total:

3,997 sq. ft.

Ground floor







5 Bedroom Jouri Hills Villa A

Ground Floor: 2,309 sq. ft.
First Floor: 2,010 sq. ft.
Second Floor: 1,410 sq. ft.
Total: 5,729 sq. ft.

Ground floor



First floor





Five Bedroom Jouri Hills

Signature Villas

The beautifully appointed Five Bedroom Jouri Hills Townhouse makes the most of natural touches, with trees incorporated as part of the design and stunning use

Smart home technology complements the fresh design of this home, creating a truly modern, comfortable and luxurious living experience.



5 Bedroom Jouri Hills Signature Villa - 1 A

Ground Floor:

2,786 sq. ft.

First Floor:

2,419 sq. ft.

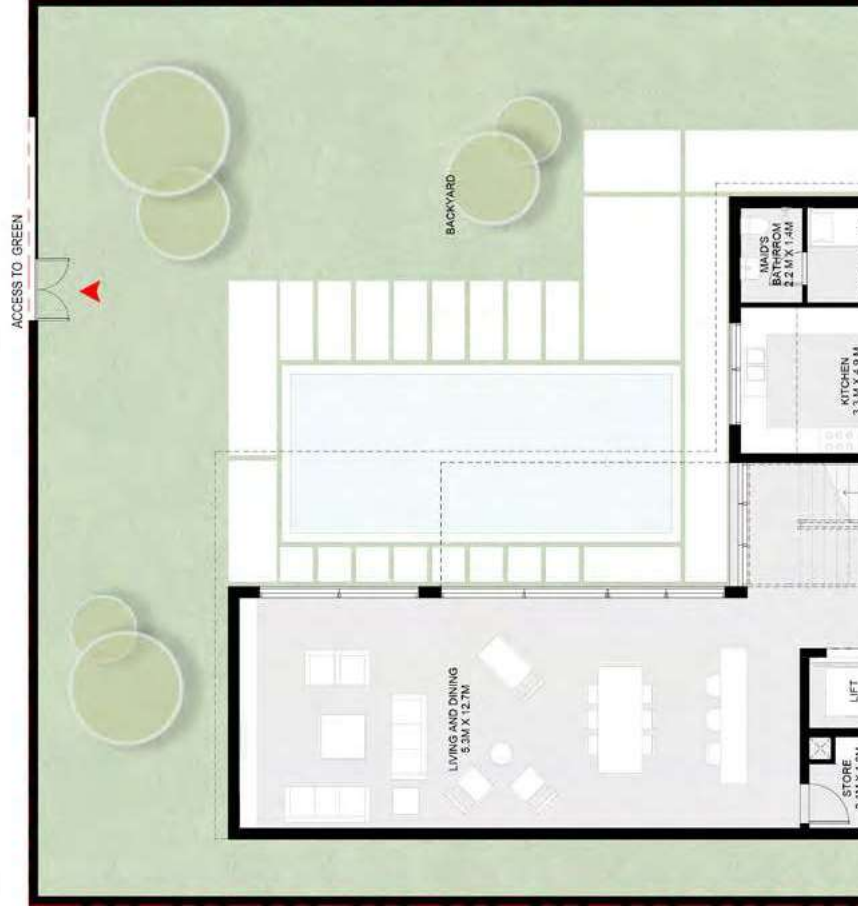
Second Floor:

1,282 sq. ft.

Total:

6,487 sq. ft.

Ground floor



First floor





5 Bedroom Jouri Hills Signature Villa - 1 B

Ground Floor:

2,786 sq. ft.

First Floor:

2,419 sq. ft.

Second Floor:

1,282 sq. ft.

Total:

6,487 sq. ft.

Ground floor



First floor



Five Bedroom Jouri Hills

Signature Villa

Luxury touches and inspired architecture comes as standard at the Five Bedroom Jouri Hills Signature Villa. Spread over four floors, this distinctively designed

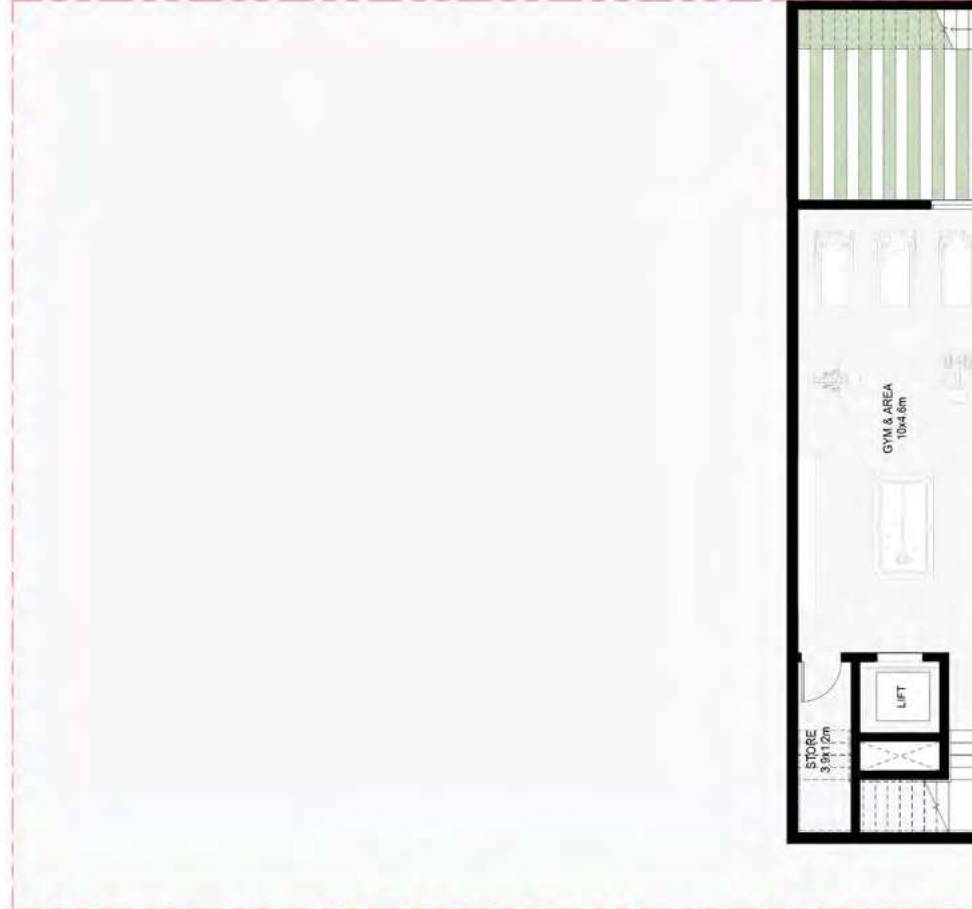
Contemporary features include a second-floor master bedroom and terrace featuring beautiful views of the community, a lift and a swimming pool



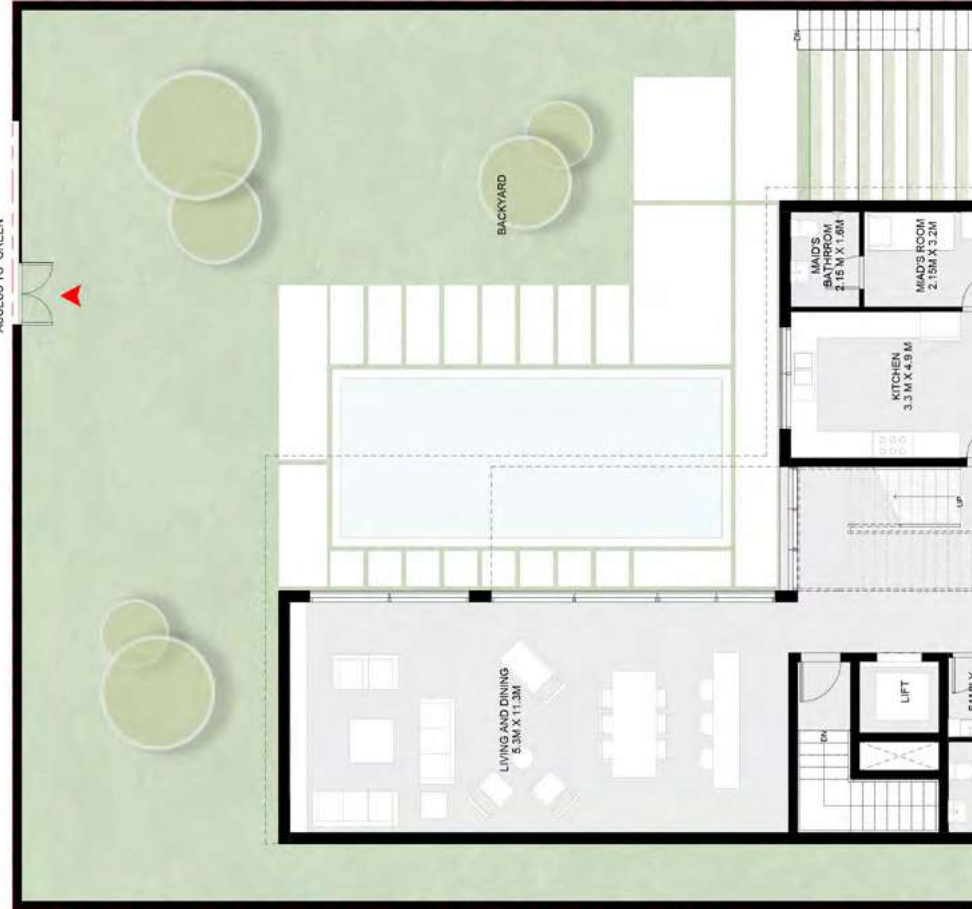
5 Bedroom Jouri Hills Signature Villa - 2 A

- Basement : 1,587 sq. ft.
- Ground floor: 2,785 sq. ft.
- First floor: 2,419 sq. ft.
- Second floor: 1,282 sq. ft.
- Total: 8,073 sq. ft.**

Basement



Ground floor

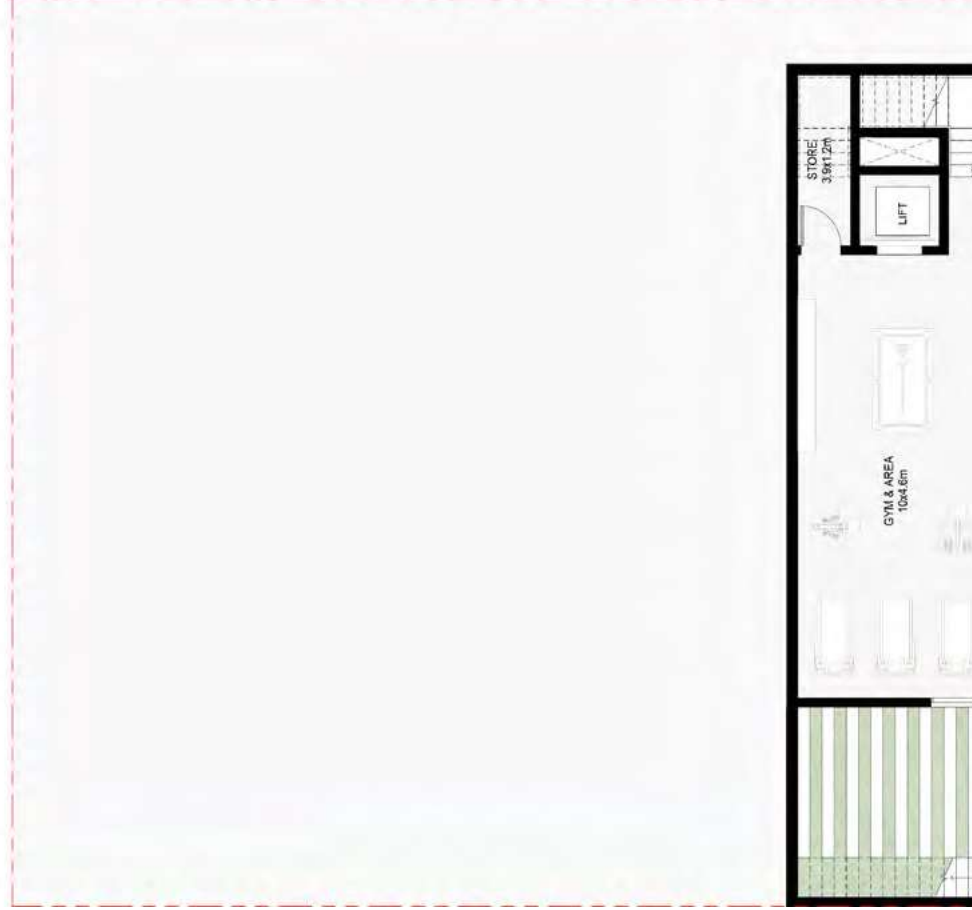




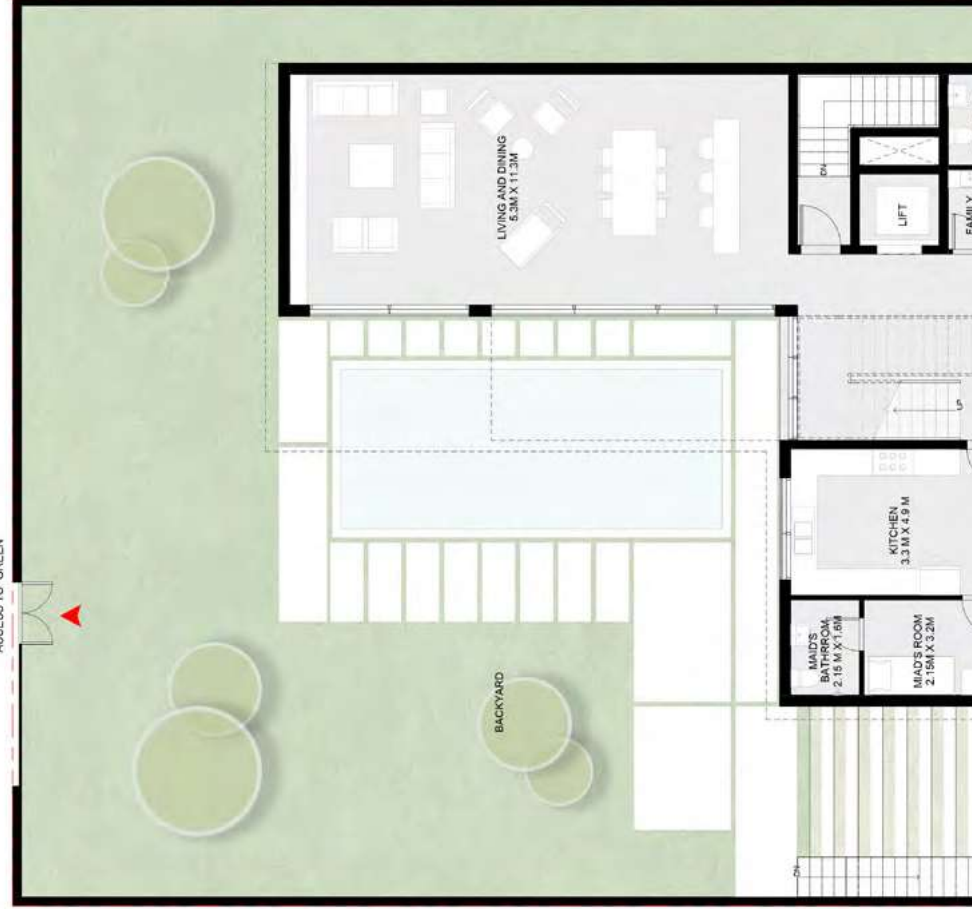
5 Bedroom Jouri Hills Signature Villa - 2 B

- Basement : 1,587 sq. ft.
- Ground floor: 2,785 sq. ft.
- First floor: 2,419 sq. ft.
- Second floor: 1,282 sq. ft.
- Total: 8,073 sq. ft.**

Basement



Ground floor









6 Bedroom Jouri Hills Mansion - B

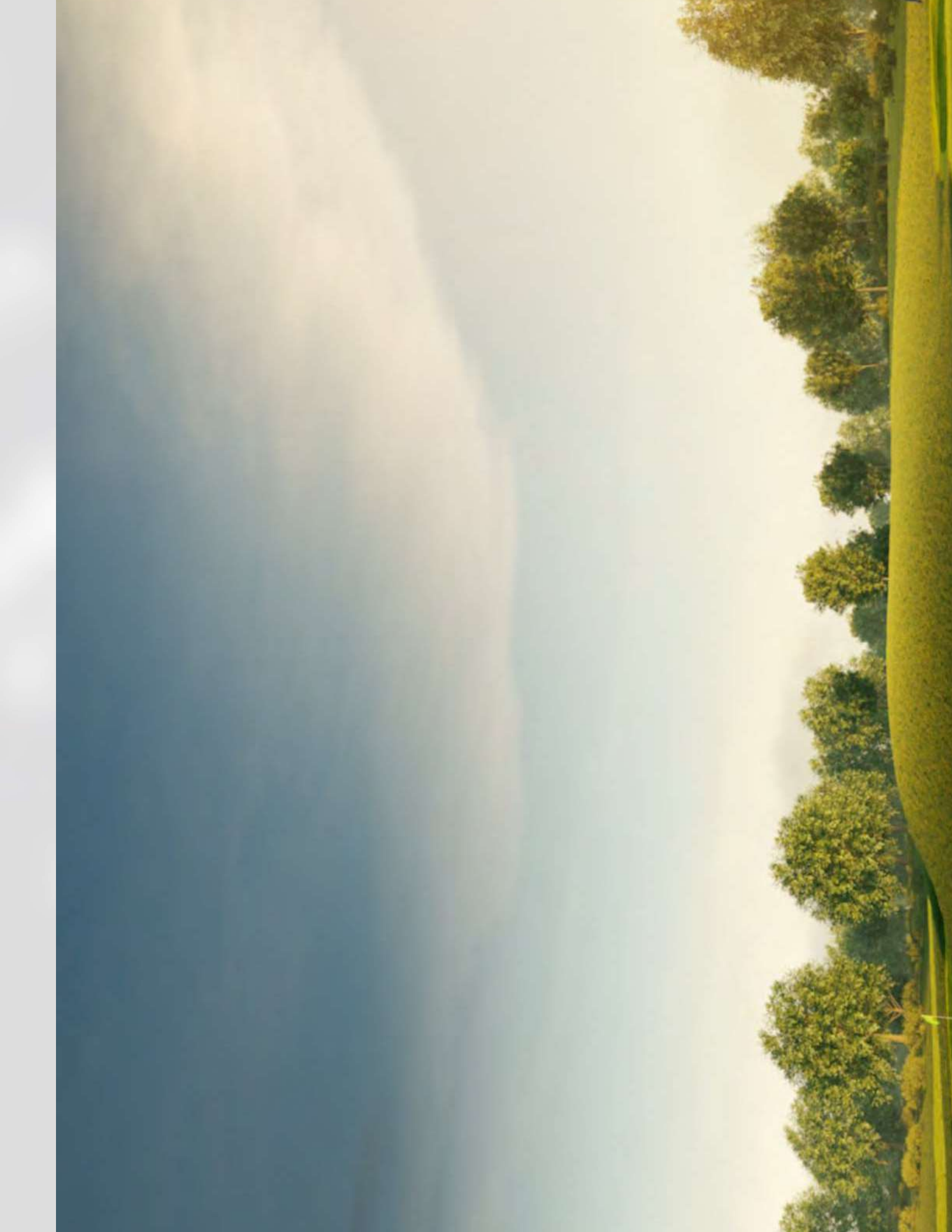
- Basement : 4,788 sq. ft.
- Ground floor: 4,202 sq. ft.
- First floor: 3,557 sq. ft.
- Second floor: 2,542 sq. ft.
- Total: 15,089 sq. ft.**

Basement



Ground floor







European Tour Performance Institute (ETPI)

The European Tour Performance Institute at Jumeirah Golf Estates is one of only two facilities of its kind in the world and recognised for its unique features,

members alike. Using cutting-edge technology, the facility delivers unique coaching and practice opportunities. The range of coaching and practice

THANKS FOR WATCHING
CONTACT US FOR MORE INFORMATION