



YOU ARE A GUIDE TO THE  
WORLD OF LUXURY



WILTON PARK  
RESIDENCES

ELLINGTON  
PROPERTIES

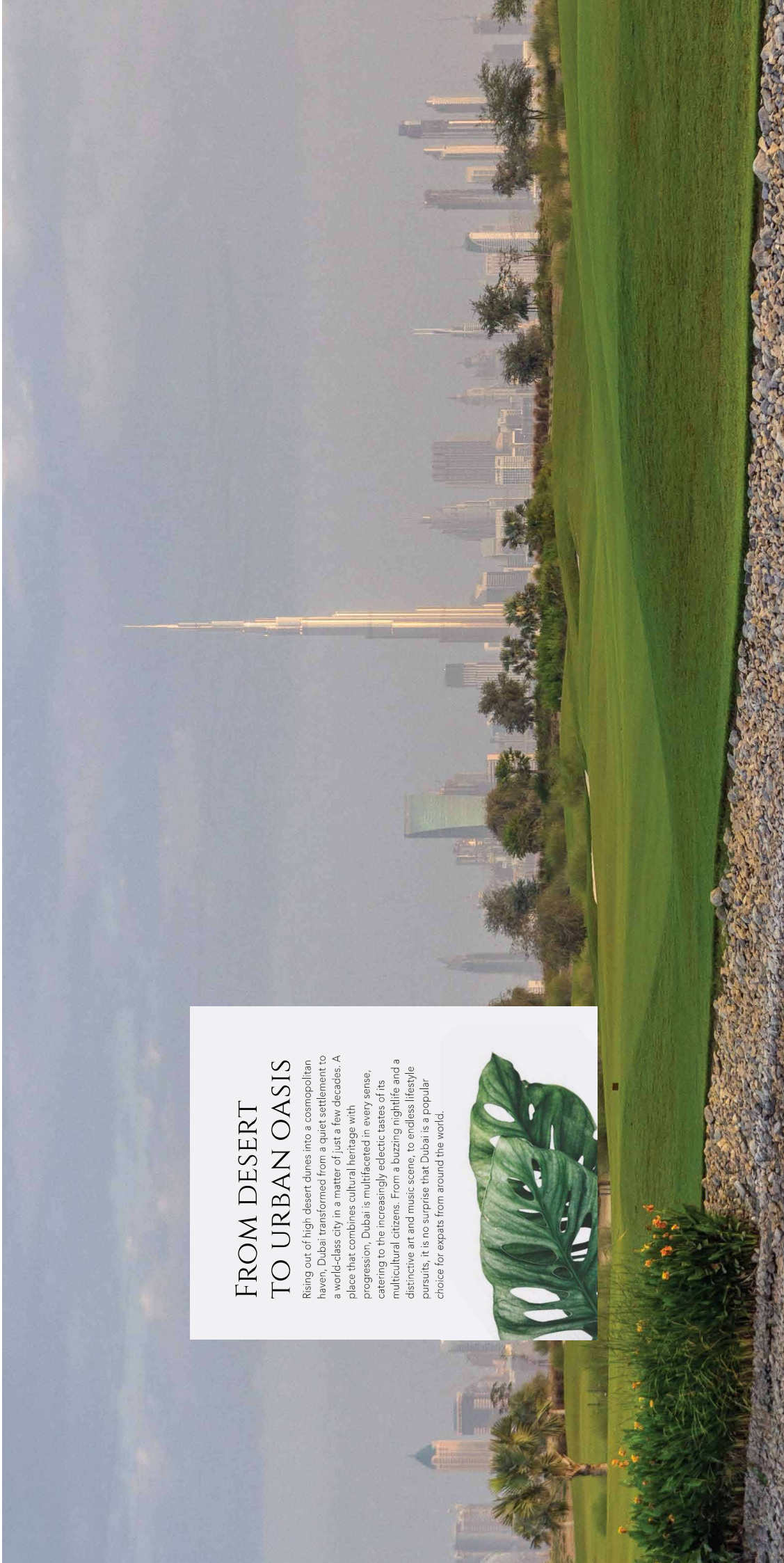
[www.ellingtongroup.com](http://www.ellingtongroup.com)

NATURE AT  
YOUR DOORSTEP



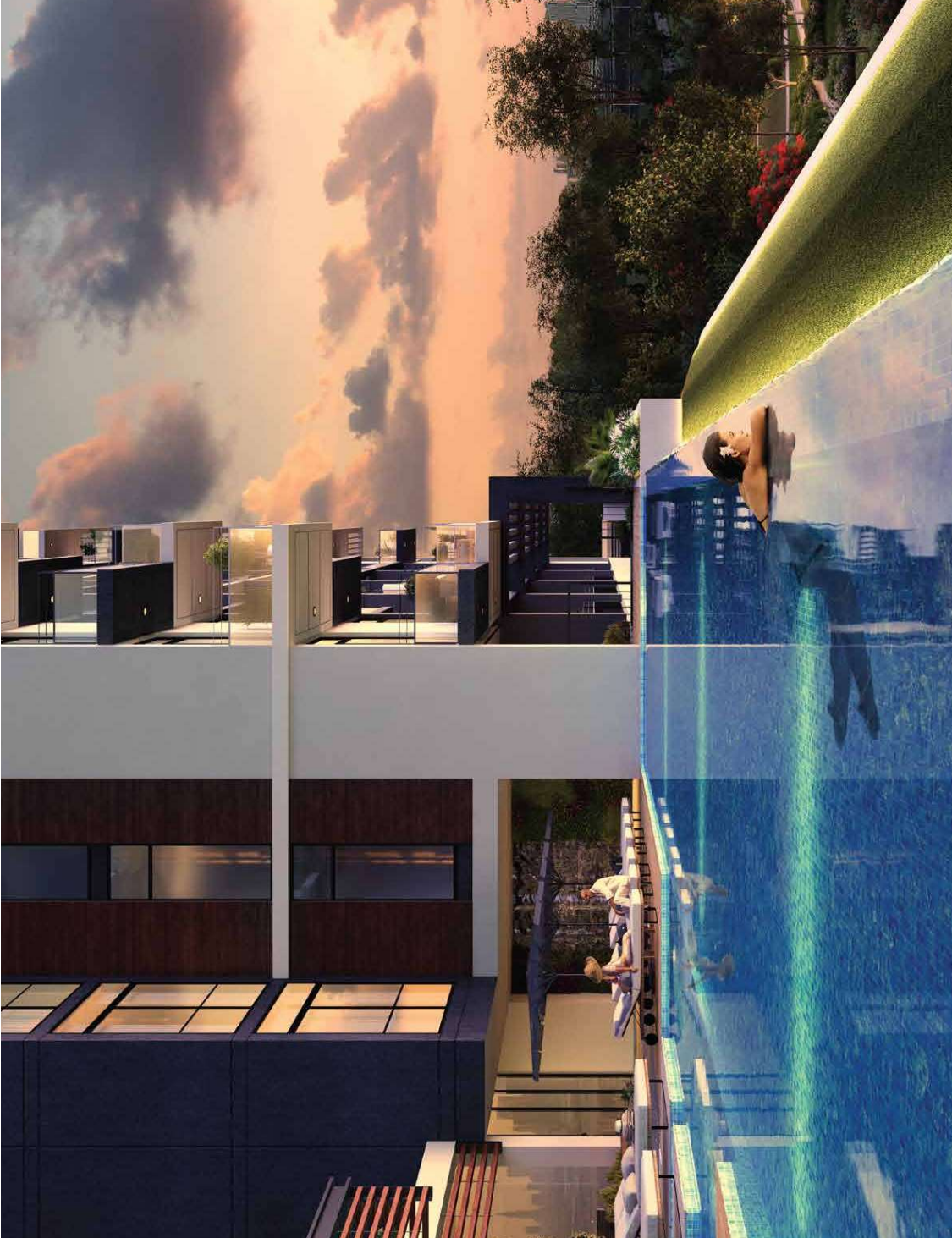
## FROM DESERT TO URBAN OASIS

Rising out of high desert dunes into a cosmopolitan haven, Dubai transformed from a quiet settlement to a world-class city in a matter of just a few decades. A place that combines cultural heritage with progression, Dubai is multifaceted in every sense, catering to the increasingly eclectic tastes of its multicultural citizens. From a buzzing nightlife and a distinctive art and music scene, to endless lifestyle pursuits, it is no surprise that Dubai is a popular choice for expats from around the world.



# HOMES THAT INSPIRE

Your homes should inspire you to go out into the world, do great things and come back for some well-earned repose. Many equate home with the idea of owning a place, when in fact it is so much more than that. A home isn't where you keep your belongings, it's where you belong. It's your very own personal statement, of the life you want to live. And when you find a place that is truly an extension of who you are. You know, you are home.



# SETTING NEW STANDARDS ACROSS DUBAI

## *MBR City*

### W I L T O N — TERRACES —

Wilson Terraces are a two-12-storied towers located against a beautiful lush backdrop of MBR City. The development comprises of bespoke 1 and 2 bedroom residences.

## *Jumeirah Village*

### BELGRAVIA

Classic styling and contemporary design made Belgravia a huge success in Jumeirah Village. With meticulously designed interiors, it includes 100,000 square feet of stunning landscaped areas.

### BELGRAVIA III

A uniquely designed community, Belgravia III offers modern studios, 1 and 2 bedroom houses that are highly in demand. Impressively designed interiors, heightened ceilings, resort-style pool and fitness centers make this community a favorite among buyers.

### EATON PLACE

Created with community living in mind, Eaton Place encompasses a collection of studio, 1, 2 & 3 bedroom residences. Every house in the community overlooks a resort-style pool and courtyard.

### BELGRAVIA HEIGHTS II

Sophistication meets simplicity in the beautifully crafted homes of Belgravia Heights II. Explore bespoke studios, 1 and 2 bedrooms.

### BELGRAVIA II

With ample spaces to connect, share and grow, Belgravia II offers a mix of spacious townhouses, 1, 2 and 3 bedroom apartments and studios.

### BELGRAVIA

Space

An icon of contemporary architecture and designed for optimum community living, Belgravia Square also boasts a mini cinema and plush aesthetic lounges. Discover beautifully crafted studios, 1 & 2 bedroom apartments in Jumeirah Village Circle.

### BELGRAVIA HEIGHTS I

Explore seamless architecture with a contemporary design palette at Belgravia Heights I featuring bespoke studios, 1 and 2 bedroom apartments.

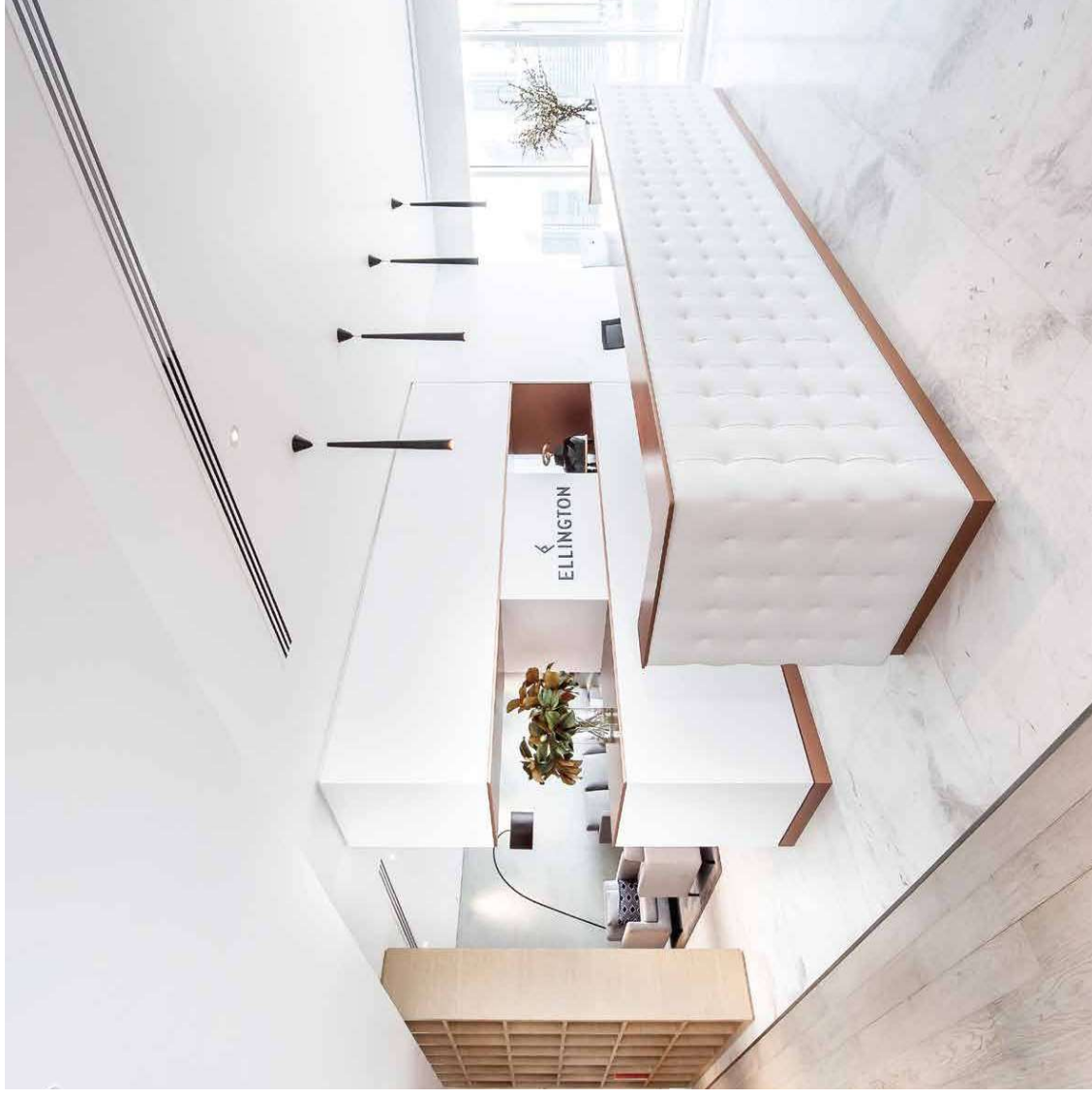
### SOMERSET MEWS

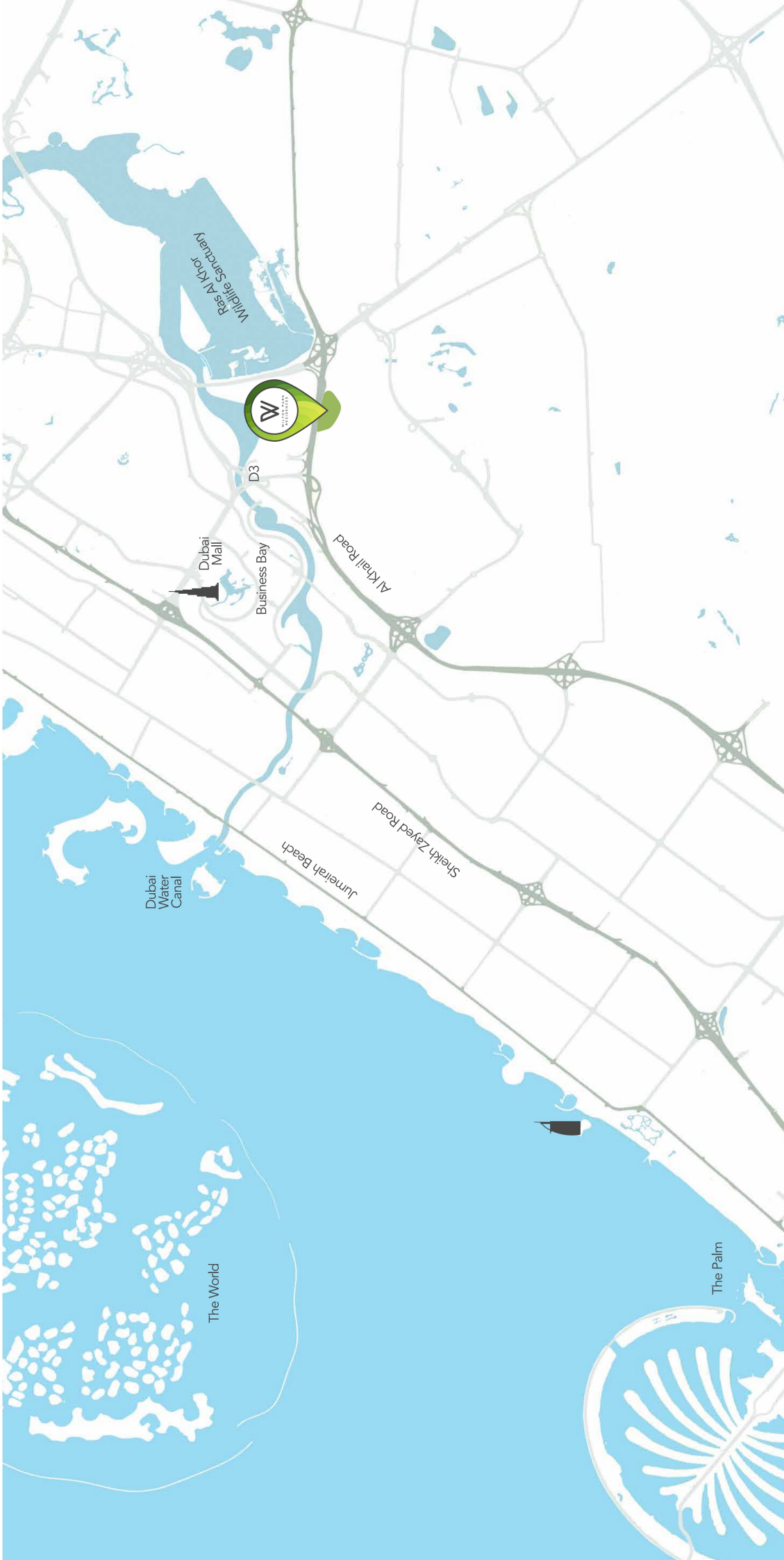
Enjoy exquisite community living at Somerset Mews. Explore spacious 4 bedroom townhouses, designed in true contemporary fashion.

## *Downtown Dubai*

### DT1

DT1 was chosen as the 'Best Residential High-Rise' by the Arabian Property Awards for three years in a row. The building is designed to attract a high-caliber of individuals who consider air, innovation and refinement integral to their lives. It stands out as a space that has the ability to transform and enhance the lives of its residents.





W Middle East

D3

Dubai Mall

Business Bay

Al Khail Road

Sheikh Zayed Road

Jumeirah Beach

Dubai Water Canal

The World

The Palm

CENTRALLY LOCATED  
FOR ALL YOUR NEEDS



**01**

minute

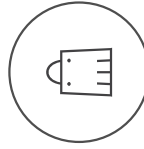
North London  
Collegiate School



**01**

minute

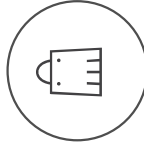
Sobha Hartland  
International School



**03**

minutes

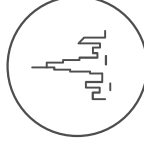
Meydan One  
Mall



**05**

minutes

Dubai Mall



**05**

minutes

Downtown  
Dubai



**05**

minutes

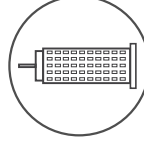
Meydan  
Racecourse



**06**

minutes

Dubai International  
Financial Centre



**07**

minutes

Dubai World  
Trade Centre



**12**

minutes

Dubai International  
Airport



## A TRUE URBAN OASIS

Offering a unique living experience, Mohammed Bin Rashid Al Maktoum City is the ideal address for those attuned to nature and who value tranquility and privacy, while still being within easy reach of many Dubai's world-class attractions, landmarks and transport links.



WELCOME TO



WILTON PARK  
RESIDENCES

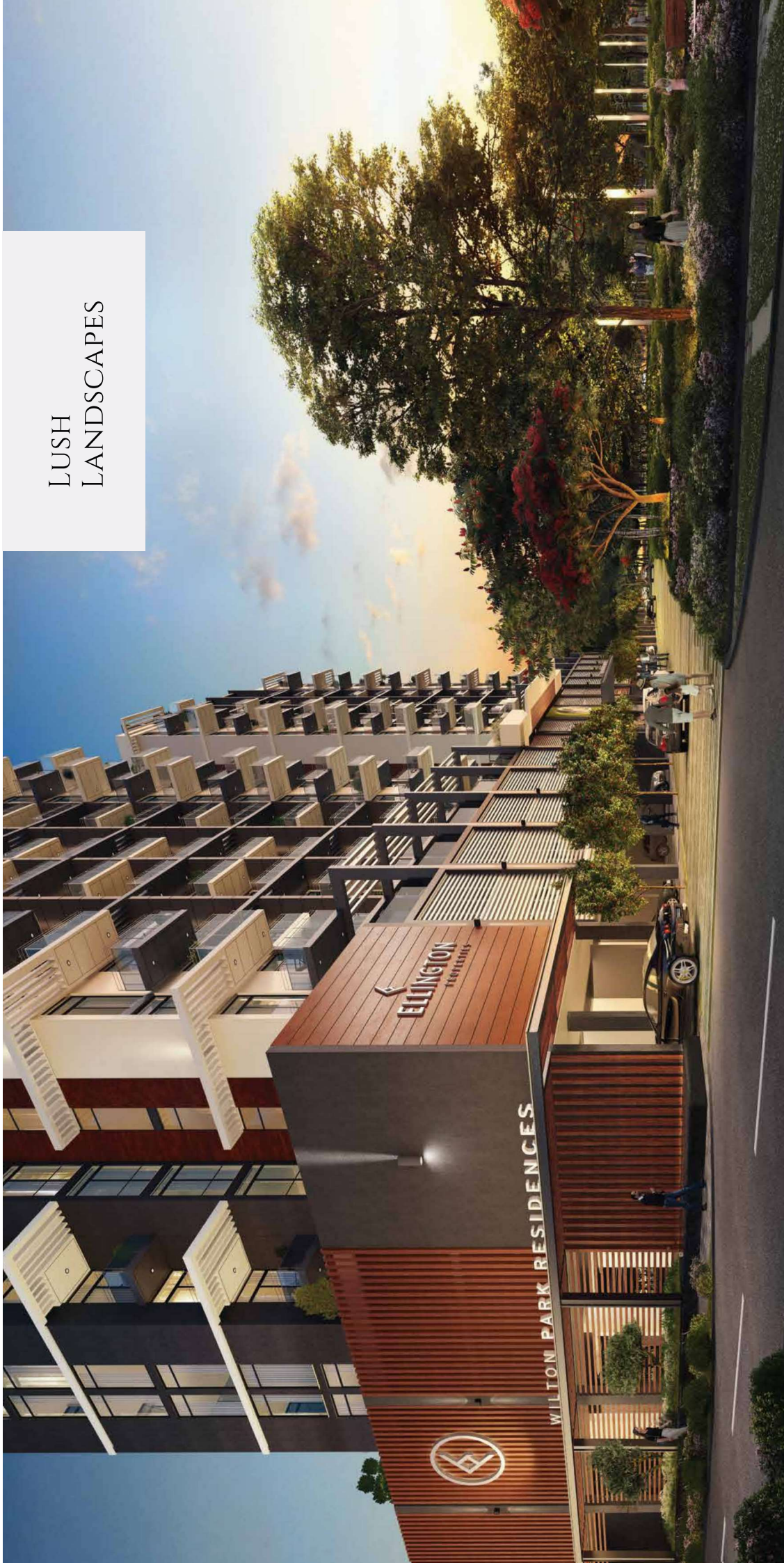
Tucked away in its own quiet corner, in Mohammed Bin Rashid Al Maktoum City, Ellington Group's latest project, exudes serenity. Surrounded by lush parklands, Wilton Park Residences is a secluded haven, set apart from the hustle and bustle of the metropolis. And yet, everything is at hand within easy reach.

Every element of these 12-storied residential twin towers has been carefully considered, with each detail contributing to inspire contemporary European style living: from the selection of high-quality finishes, intricate textures and its unique colour palette, brought together with seamless skill and finesse.

Wilton Park Residences is an icon of understated and restrained elegance comprising of perfectly crafted studios, 1 & 2 bedrooms. The perfect investment for home buyers who desire a harmonious relationship between aesthetic design, privacy and community living.



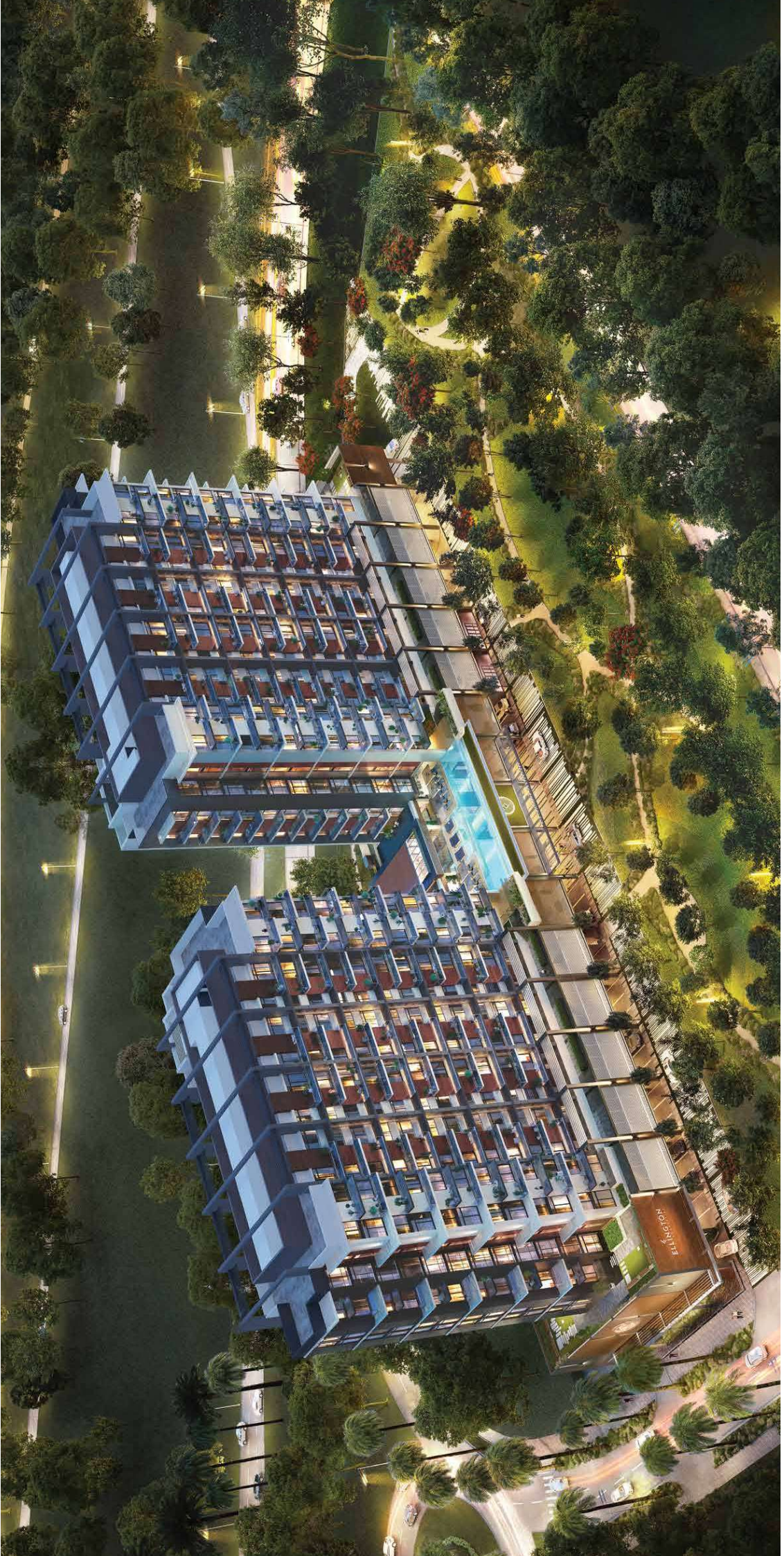
LUSH  
LANDSCAPES



## A SEAMLESS BLEND OF NATURE & ARCHITECTURE

Designed to let its residents experience a balanced indoor and outdoor lifestyle, the apartments and the residences flow uninterrupted into the outdoor spaces, seamlessly extending the interiors. Influenced by modern London architecture, Wilton Park Residences' tinted grey exteriors, set against a natural and organic palette, make for a unique contemporary look.







IMMERSE YOURSELF  
IN NATURE AND  
NATURAL LIGHT

THE ULTIMATE  
SPACE TO UNWIND





LIVE THE  
RESORT LIFE.

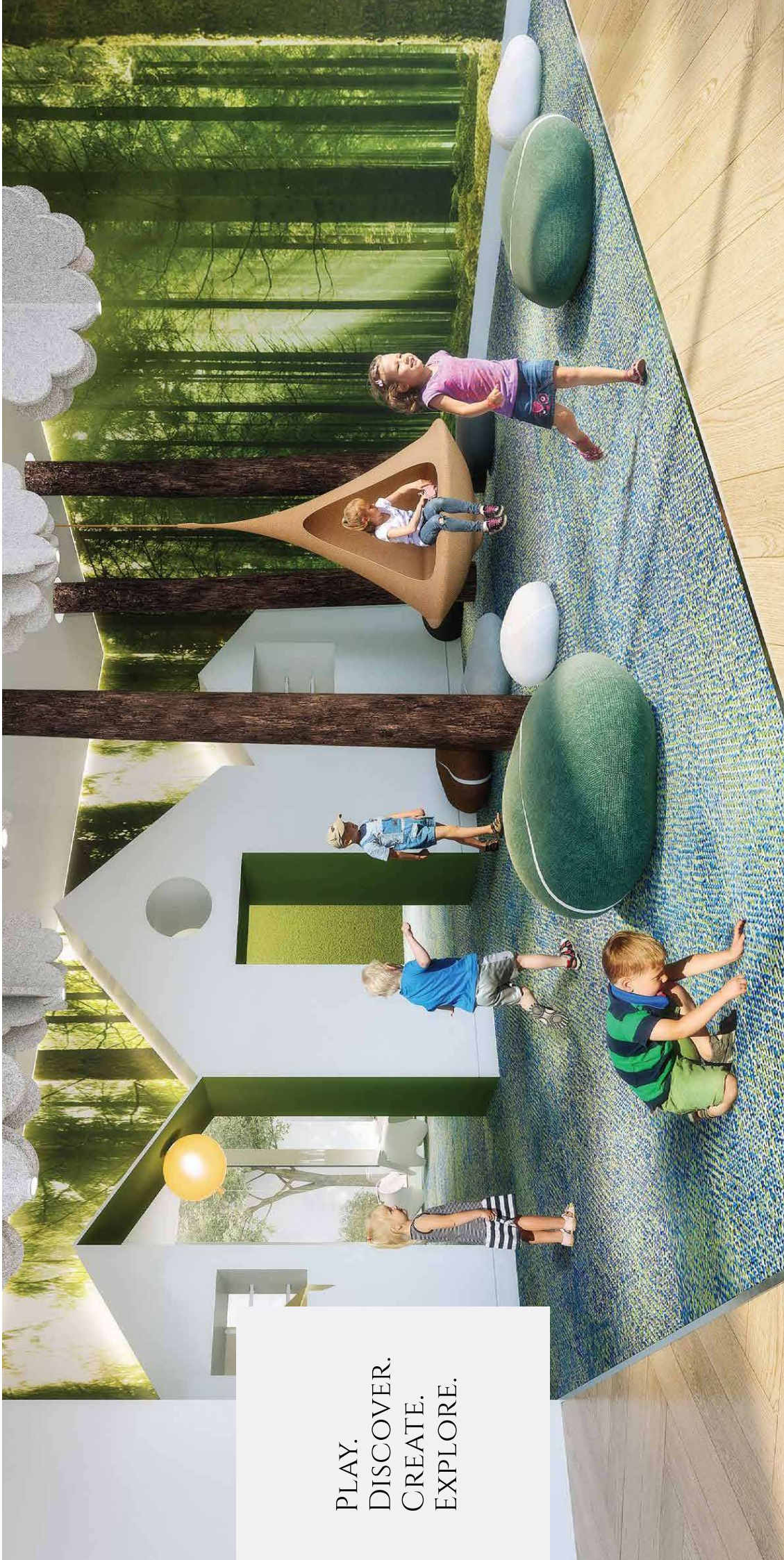




DEDICATED TO  
WELLNESS & FITNESS



PLAY.  
DISCOVER.  
CREATE.  
EXPLORE.



## STYLE THAT WILL ENDURE

Wilton Park Residences offers a neutral colour palette of bright whites, elegant greys and nature-inspired hues that give a fresh feel to your living space. Also revel in the lush and grandiose green views, as our floor-to-ceiling windows induce an outdoor feel, creating a natural ambience in your home.





INSPIRED BY  
CONTEMPORARY  
EUROPEAN STYLE  
LIVING



STYLE IS IN  
THE DETAILS



# THANKS FOR WATCHING

CONTACT US FOR MORE INFORMATION