



YOU ARE A GUIDE TO THE  
WORLD OF LUXURY

The background of the image is a light-colored, marbled surface, possibly marble or a similar stone, with soft, flowing veins in shades of grey and white. The texture is organic and elegant.

**BVLGARI**

LIGHTHOUSE  
DUBAI















# DESIGN PHILOSOPHY AND STORY

## THE ISLAND

### THE MASTERPLAN

The sleek profile of a “seahorse” defines the arcs of sand and rock of the man-made island. Like an oasis in the sand dunes, this artificial island covered with gardens, pools, bathing in light and crossed by boulevards, becomes the perfect destination, a place to arrive, look out from and stay. This place collects icons of great communicative power, the shadows of the “architectural coral” on the vein of black and gold marble, the large “Bvlgari chandelier” dotting the bay, the “hotel pool full of jewels” abandoned at its bottom. Icons of the bold and joyful Bvlgari luxury.

The masterplan integrates itself in an intimate manner with the shapes and intentions present on the island, to become a part of it: the use of a limestone that is reminiscent of the golden sand of the desert, along with sculpted architecture of Southern Italy, provides continuity with the natural material that makes the island. The boundary walls, the podiums and the most solid parts of the system are clad in golden limestone; lava stone and basalt paving create a refined graphic contrast for public space, treated as an “inner” urban environment



## LIGHTHOUSE

### BVLGARI COMMUNITY

By now the Bvlgari Hotel and Residences is an established community offering a variety of opportunities for guests and residents alike, ranging from fitness & sport, dining, shopping, and wellbeing, to water sports and cruising yachts. The common theme is a lifestyle held in balance between nature and the man made, between the sea and the city, the sky and the earth. It is in this space that the different residences and villas, like jewels in a complex setting, have found their place – unique, but united by common themes and values. Privacy, community, wellbeing, and sustainability, along with core values of bold luxury and harmony which define the Bvlgari ethos.

The BVLGARI LIGHTHOUSE, the latest ‘jewel’ does not shy away from the challenge – it is bold. It breaks away for the low-rise forms which have

defined the Resort and residence buildings to-date, and in particular the iconic Bvlgari Hotel. It presents itself as vertical stacking of individual homes reaching 27 floors in height balanced between sea and sky. A new landmark. In many ways this reflects Bvlgari’s attitude to the design of precious jewellery; the strength of the final design is mirrored by the quality, and singularity, of the individual jewels used to create it.

The height of the new BVLGARI LIGHTHOUSE provides a counterbalance to the horizontal extension of the hotel, but at the same time they share a common genetic background – defined by a stacking of horizontal elements. One building has grown horizontally where the other has grown vertically as a natural response to their immediate context.

Reminiscent of the Bvlgari Hotel, a coral motif is used to characterise the horizontal separation of the floors. The coral filters the light and helps create liveable outdoor spaces. It is also a reference to the use of coral in the historic building techniques of Dubai, and more widely the UAE, where coral was used extensively either directly as building blocks or to produce the lime used to mortar bricks together. The growth of plate coral provides us clues on how the coral might stack vertically.

The layering of the coral from floor to floor when viewed from below, recalls the layering of the coral in nature. Coral plates are teased apart vertically creating spaces for indoor and outdoor living protected by the perforated surface of the coral which extends towards the perimeter. The perimeter edge breaks down to a delicate filigree that filters light and air. The space between the coral plates is private and shielded – the ideal setting for the Bvlgari residences and penthouses. In the evening, the building acquires an ethereal appearance as soft indirect light above the coral illuminates its outline in the night sky.

### THE COMMON FACILITIES

Arriving at the entrance to the exclusive lighthouse grounds, the driveway is flanked by rows of palms, and lush hedges together with vegetation recalling the Italian heritage of Bvlgari; hedges and, at the drop off, an ancient olive tree is the central focus.

Where the private spaces are developed over the vertical axis of the building, the community spaces develop horizontally at ground level in the space protected by the extension of the coral plate suspended above the surface of the garden.

The private lounge and bar wrap the north – west sides of the floor offering luxurious areas with custom terrazzo flooring and travertine cladding for informal gatherings as well as a private boardroom for more intimate occasions or business meetings.

The connection to the outdoor space is accentuated by the coral soffit that extends from the exterior into the interior spaces, connecting the indoor lounge

and outdoor lounge under a unifying element. A Full height glass wall that mutates into large pivoting panels removes any remaining separation between inside and outside. A commercial kitchen with associated facilities ensures that lounge guests enjoy a level of catering on par with the Bvlgari hotel lounge experience.

Located on the opposite side of the entrance lobby are the fitness and spa amenities. The spa is nestled towards the interior of the building, privacy and tranquillity are paramount with precious marble and wood creating a calming and sophisticated ambience. Wrapping the exterior of the spa is the more outward facing fitness area, echoing the lounge through the relationship it cultivates with the exterior landscaped spaces. Finished with oak planks and leather the space enjoys an abundance of natural, filtered light to create the perfect ambience for training and exercise.

## GARDENS

The extensive landscaped areas are an extension of the interior amenities offering a variety of outdoor experiences in a series of interwoven, terraced garden spaces reminiscent of the Amalfi coast. Functional lawns adjacent the building lead down terraced steps into more intimate garden spaces until these open onto the shoreline. Facing the sea, while also sheltered under tall palms, is a relax pool with adjacent beach sand relax areas.

The culmination of the outdoor sequence of gardens and terraces is the 50m long promontory swimming pool with infinity edge. Served by an outdoor bar, the swimming pool, clad in turquoise green stone, projects itself outwards to the sea with seamless continuity.

Below the garden, and hidden from view, each of the tower penthouses has access to an individual, air-conditioned private garage with dedicated electric car charging station and storage facilities. Natural light and landscaping filter down to the garage from openings in the garden above. From the garage residents have direct access to their homes on the floors above.

# DESIGN PHILOSOPHY AND STORY

## RESIDENCE

Elevators move residents directly to their private lobby, exclusive to their residence. The entrance lobby presents a dramatic view to the sea & Dubai via full height glazing. The lobby is a pivotal point in the home – dividing the main living spaces on one side to the more intimate and private family spaces on the opposite side.

Full height glass doors in bronze finished frame lead from the lobby into the formal living spaces. Subdued sand tones dominate the luxurious finishes; wide oak planks on the floors, columns clad in fine silk. The entire living space is enveloped in a glass façade, curving gently to embrace the interior spaces, allowing uninterrupted views of the sea and city. The transparency and lightness of the façade breaks down the barrier between inside and outside – the interior space is intrinsically connected to the exterior space. Therefore, the dining space that is at once an interior space, with the sliding doors pulled opened, becomes an exterior dining space.

The living room takes this concept further, the sinuous curve of the façade in the angle of the living rooms opens widely to draw the extensive exterior balcony spaces, and the spectacular view beyond, into the interior. There are no adjacent balconies on the same levels, no compromises to the concept that each Residence is independent and unique.

The show kitchen features a stone floor enfolded by oak boiserie panels. The panels conceal access to the services spaces and wet kitchen allowing seamless and unobtrusive service. The centre of the space is dominated by the imposing island clad in precious marble with attached dining table in oak. The space is adaptable to different situations from private family meal to chef kitchen hosting large gatherings. Moving in the opposite direction from the entrance lobby the residents access the ensuite bedrooms, defined by a quiet elegance; oak plank flooring unifies the house, a luxurious leather panel with bronze frame defines the headboard within the oak wall panelling.

All the bedrooms have dedicated bathroom and walk-in-closet spaces. All the bedrooms have direct access to the balcony encircling the dwelling and the spectacular views beyond. The master suite stands as a singular element on the opposite corner



of the dwelling from the living room enjoying equally spectacular views and access to a broad balcony space where a Jacuzzi can stand.

## PENTHOUSES

As the tower extends higher into the sky, the coral plates are teased further apart to reveal larger interior spaces for living. The living room is an arresting double height volume matched by a larger outdoor living space with spectacular views over the Bvlgari resort and beyond to the city of Dubai and the towering Burj Khalifa. The focus for the outdoor room is a private infinity pool clad in stone slabs, the water washing over its sides and disappearing into the balcony floor - The Bvlgari Penthouses

The coral above the balcony reinforces the connection to the sea visible in every direction below. In the evening it cast it glow over the outdoor space recalling light bouncing off the water's surface. The service quarters encompass three maid & driver's rooms, laundry, storage, wet kitchen, all with access to the service elevator allowing seamless operation without interfering in the family's activities.

The more generous space of the Bvlgari Penthouses allows the master bedroom suite to encompass an office space, small gym, bathroom, and spa, his and hers walk in closet, with the bedroom occupying the prime west facing corner of building where it enjoys remarkable views toward Burj Arab and the evening sunset.

## SKY VILLA

The topmost part of the tower is occupied exclusively by the BULGAR SKY VILLA. The villa dominates its surrounds while remaining harmonious with the overall composition of the tower structure. Conceived as a luxurious villa sitting in a garden, the Sky Villa, literally the light at the top of the lighthouse, occupies three complete floors. A villa with private gardens, swimming pools and amenities that are unrivalled. The essence of Bvlgari luxury and Italian style are distilled in the materials, workmanship, and spirit of the Sky Villa.

A private five car garage finished in natural stone connects directly to the shuttle elevator used exclusively by the BULGAR SKY VILLA residents and their guests. The villa also has a dedicated lobby at ground floor allowing private access to the building amenities and gardens.

Internally the villa has a dedicated elevator for the residents and guests moving between the floors together with a service lift to allow the movement of staff behind the scenes. Unifying the Villa is the feature staircase connecting all three levels. The staircase, illuminated by a skylight above, curves to reflect the geometry of the building as it sweeps from one floor to the next: a singular, sculptural element realised in fine stone.

Level 25, the lowest floor of the villa, comprising four (4) guest rooms and associated guest living and dining spaces, the villa amenities including private spa and fitness centre, and the main service spaces. The service spaces are designed to function at the highest level, a commercial kitchen is supported by rooms for up to four maids or drivers, storage rooms and laundry. A hidden service elevator connects the main kitchen to the family kitchen on the floor above and the main show kitchen at the terrace garden level of the penthouse.

Level 26, the central villa floor is the main family floor. The spectacular lobby clad in Italian travertine looks north over the sea. To the left, generous dining and living spaces unfold in close relationship to the adjacent exterior space. South of the living space there are four spacious ensuite bedrooms and family room. At the same level, the feature stair passes adjacent the main entrance lobby and defines the separation between the main family spaces and the



eastern wing of the floor, entirely dedicated to the master bedroom suites. The spaces are luxurious, but also accommodating and convivial in the Bvlgari tradition. The bedroom is generously proportioned with attached sitting space and access to the large balcony. The space wraps around the building to connect into the master living space, master bathroom and private gym facilities. All the separate rooms composing the master suite have spectacular views over the city and towards the sea.

The upper most destination in the lighthouse is the floor that emanates light... The topmost floor of the building is a tall shimmering volume with high ceilings containing the main living space, show kitchen and dining rooms. The space is unique for its relationship to the outdoor spaces – more analogous to a villa in a garden than a penthouse floor in a building. On all four sides it is surrounded with lush planting offerings a series of outdoor amenities: 20m lap pool, jacuzzi, outdoor dining and living spaces. All with the stunning backdrop of the Bvlgari resort and the city and sea beyond.

# LOCATION



BVLGARI  
LIGHTHOUSE

BURJ  
KHALIFA

BURJ  
AL-ARAB

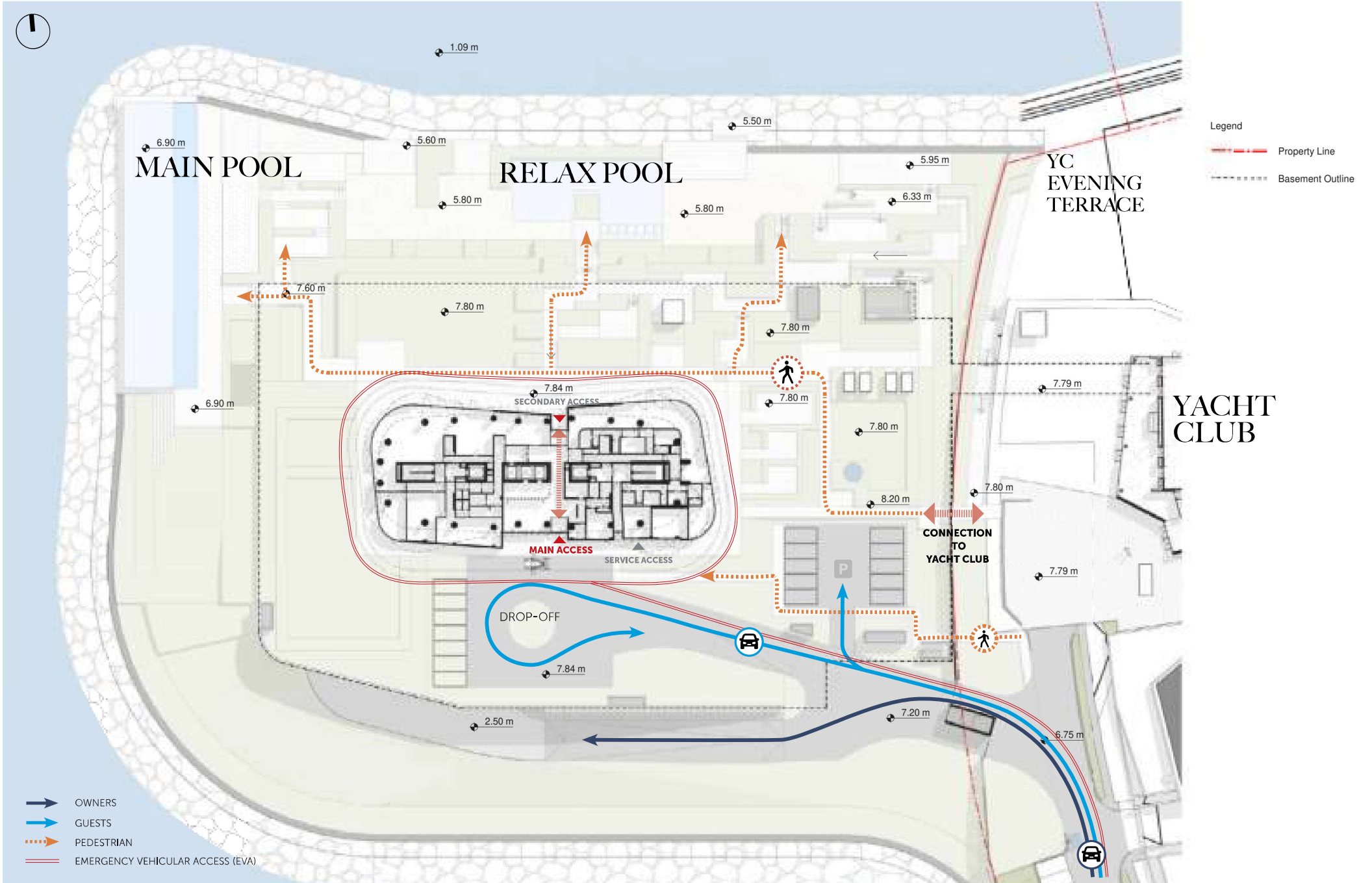
# MASTERPLAN



# SITE PLAN



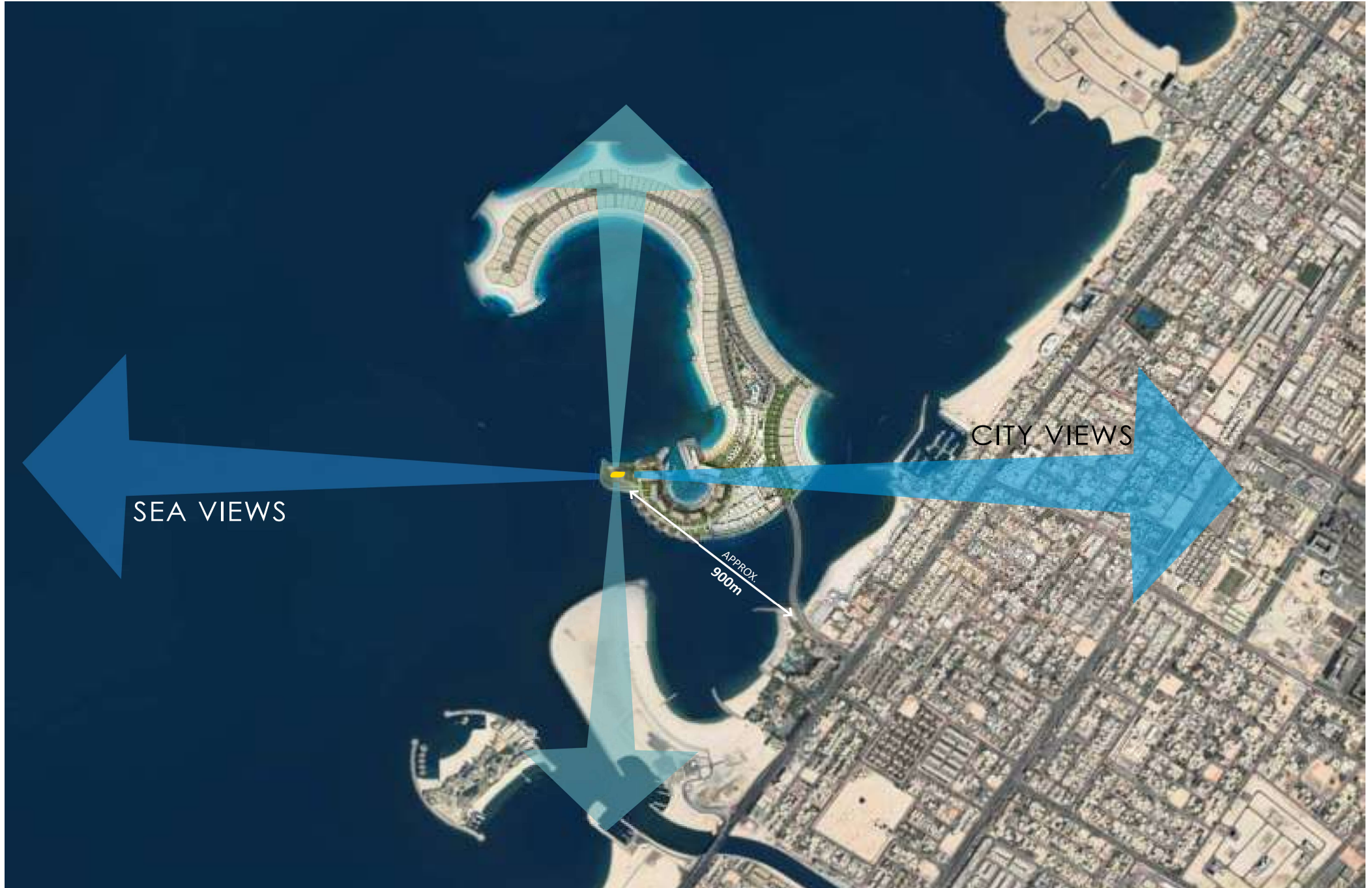
# SITE PLAN



- OWNERS
- GUESTS
- PEDESTRIAN
- EMERGENCY VEHICULAR ACCESS (EVA)

- Legend
- Property Line
  - Basement Outline

# VIEW ANGLES

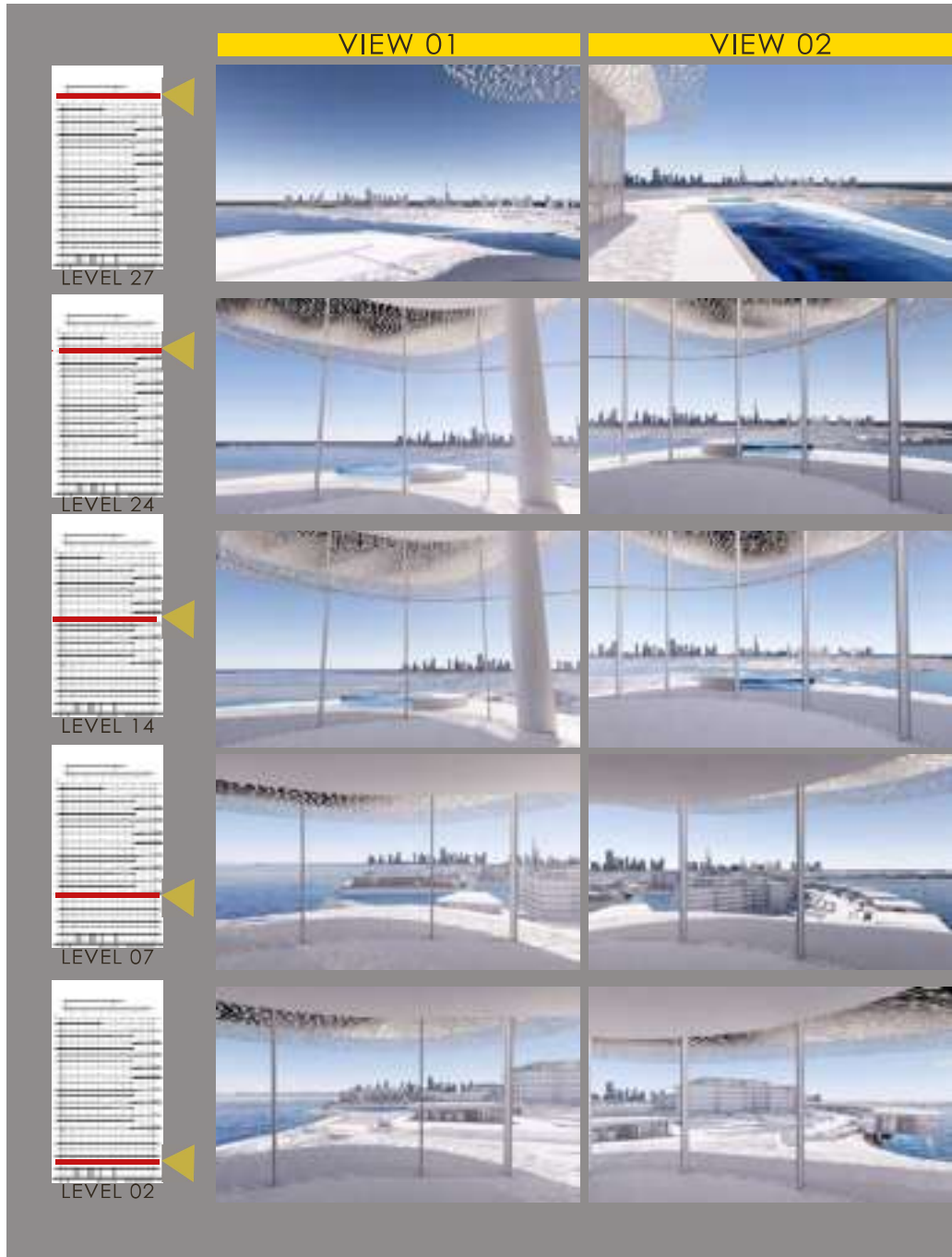


# VIEW ANGLES

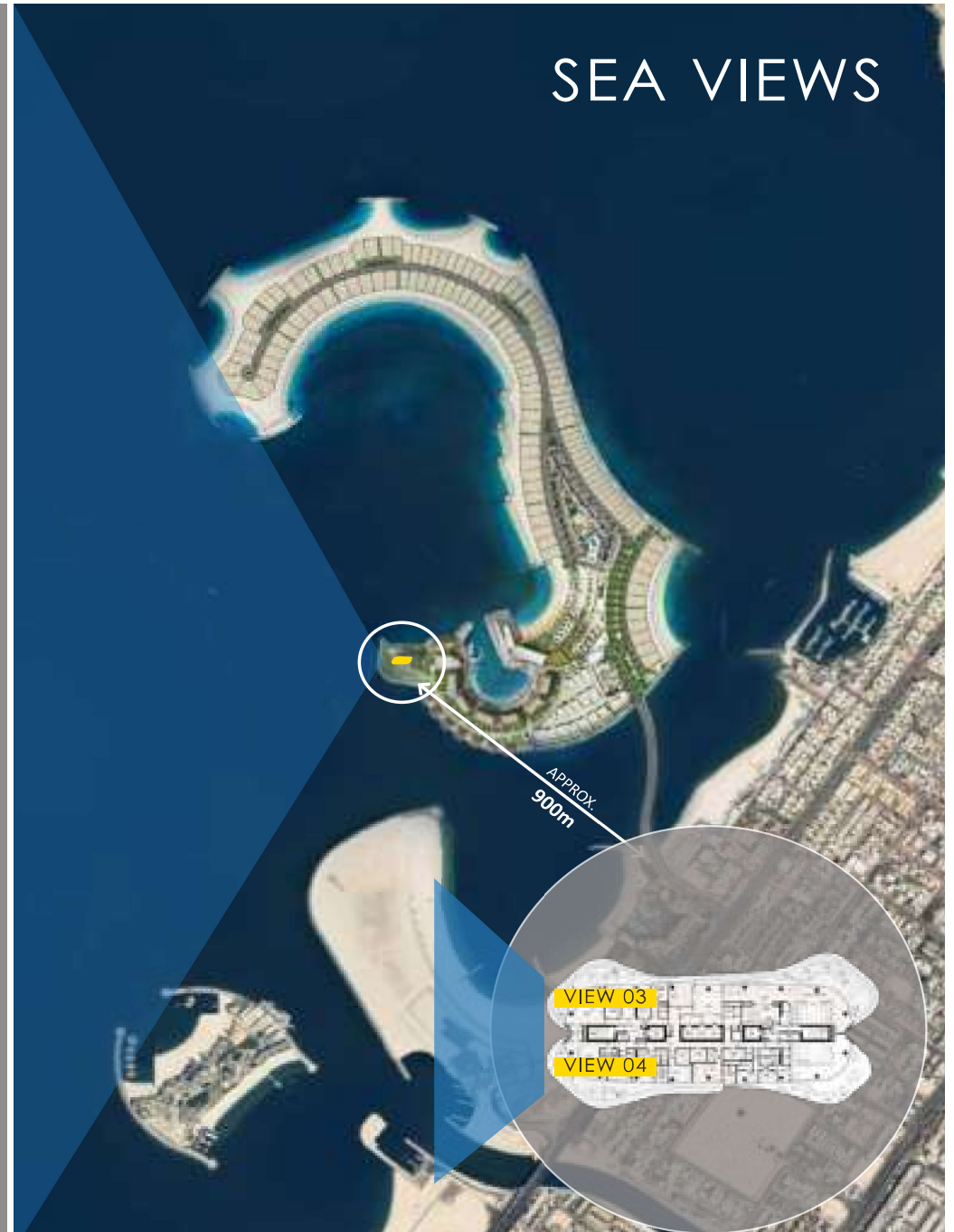
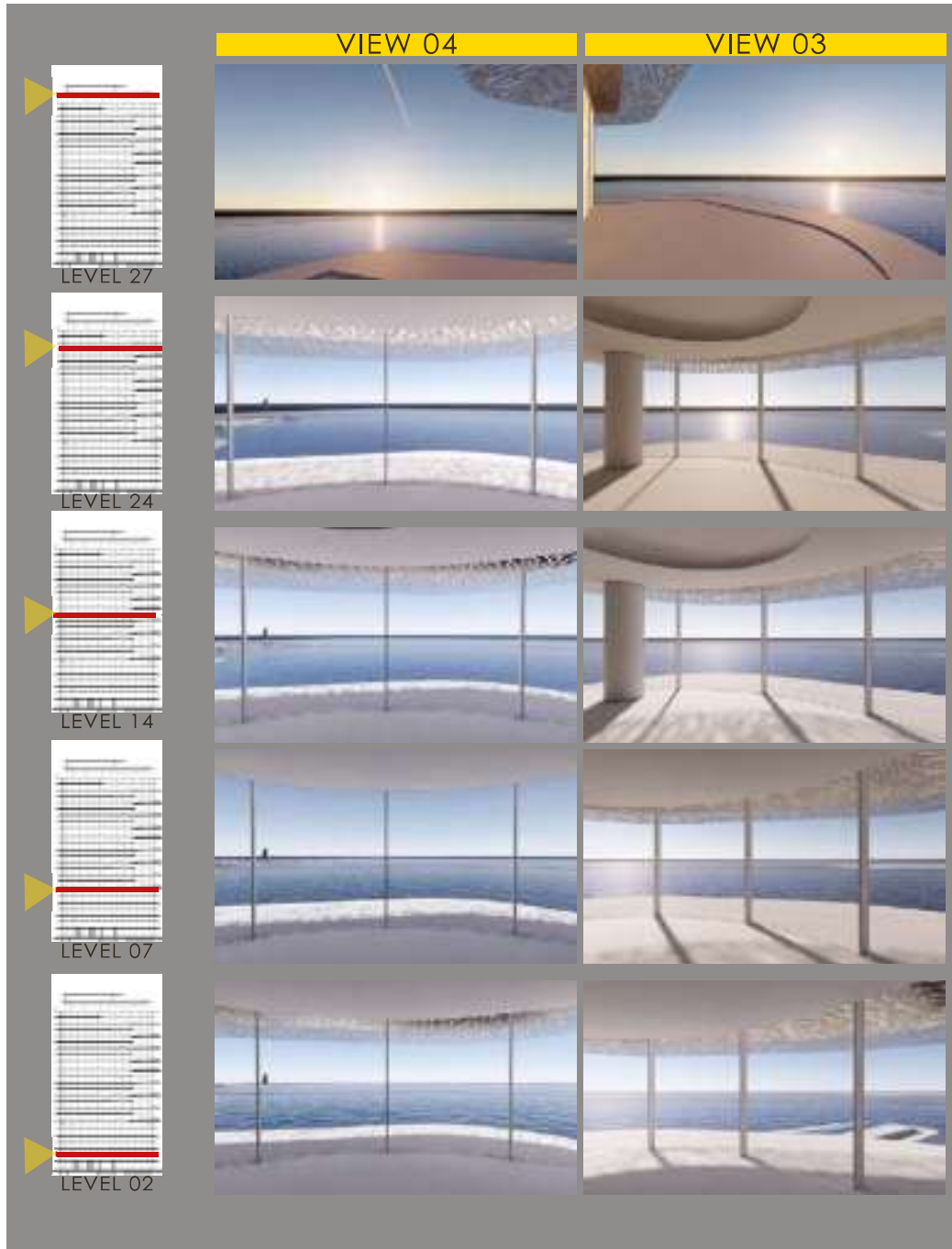




# VIEW ANGLES



# VIEW ANGLES



## GENERAL VIEW



**VIEW FROM IL RISTORANTE**



**VIEW FROM BVLGARI RESIDENCES**



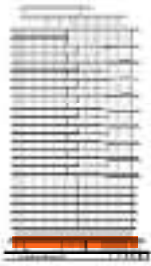
VIEW FROM THE BEACH



The background of the page is a classic marbled paper pattern. It features a light cream or off-white base color, overlaid with intricate, flowing veins of grey, blue, and brown. The lines are organic and somewhat chaotic, creating a sense of movement and depth. The overall effect is reminiscent of traditional hand-marbled paper used in bookbinding.

COMMON SPACES

# GROUND FLOOR LAYOUT





ARRIVAL DROP OFF



ARRIVAL LOBBY



## LOBBY LOUNGE



## IL BAR



## FITNESS CENTRE



## MAIN POOL



The background of the entire page is a close-up, high-resolution image of a marble surface. The marble has a complex, organic pattern of veins in shades of light grey, beige, and off-white, creating a sense of depth and texture. The lighting is soft and even, highlighting the natural grain and subtle color variations of the stone.

INTERIOR DESIGN CONCEPT  
MOOD BOARDS - COMMON SPACES

**GROUND FLOOR - COMMON SPACES**

**ARRIVAL LOBBY MOOD**



VENETIAN TERRAZZO LAYED ON SITE CUSTOM DESIGN



NAVONA TRAVERTINO CROSSCUT WITH CUSTOM PATTERN





**GROUND FLOOR - COMMON SPACES**

**LOUNGE & BAR MOOD**



**NAVONA TRAVERTINE CROSSCUT WITH CUSTOM PATTERN**



**FLUTED NAVONA TRAVERTINE CROSSCUT**



**BRUSHED OAK VENEER**



**IVORY ONYX**



**GROUND FLOOR - COMMON SPACES**

**FITNESS MOOD**



**BURNISHED BRASS**



**BRUSHED OAK VENEER  
WITH VERTICAL GROOVE**



The background of the image is a close-up of a marble surface with a complex, organic pattern of veins in shades of grey, white, and light beige. The veins flow diagonally across the frame, creating a sense of movement and depth. The lighting is soft and even, highlighting the natural texture of the stone.

4-BEDROOM  
PENTHOUSE

4-BEDROOM PENTHOUSE - TYPE A - FLOOR PLAN



Suite Areas (A)	Balcony Areas (B)	NSA (A + B)
4973.03 ft <sup>2</sup>	1502.10 ft <sup>2</sup>	6475.14 ft <sup>2</sup>
462.01 m <sup>2</sup>	139.55 m <sup>2</sup>	601.56 m <sup>2</sup>



4-BEDROOM PENTHOUSE - TYPE B - FLOOR PLAN



Suite Areas (A)	Balcony Areas (B)	NSA (A + B)
4936.76 ft <sup>2</sup>	1502.32 ft <sup>2</sup>	6439.08 ft <sup>2</sup>
458.64 m <sup>2</sup>	139.57 m <sup>2</sup>	598.21 m <sup>2</sup>



**4-BEDROOM PENTHOUSE - OUTDOOR TERRACES**



4-BEDROOM PENTHOUSE - LOBBY



4-BEDROOM PENTHOUSE - LIVING ROOM





4-BEDROOM PENTHOUSE - DINING ROOM



4-BEDROOM PENTHOUSE - SHOW KITCHEN



## 4-BEDROOM PENTHOUSE - MASTER BEDROOM



## 4-BEDROOM PENTHOUSE - SECONDARY BEDROOM



**4-BEDROOM PENTHOUSE - MASTER BATHROOM**



**4-BEDROOM PENTHOUSE - SECONDARY BATHROOM**



# FINISHING SCHEDULE



Lobby	
Flooring	Travertine
Walls	Fluted Travertine
Ceiling	White Painted
Coffer	Gold Painted
Entrance Door	Glazed doors with bronzed frame and fluted Glass
Internal Door	Glazed doors with bronzed frame and fluted Glass
Facade	Sliding System with bronze finish frame

Show Kitchen	
Cabinetry	Oak Wood Finish
Island Counter	Marble and Bronze Finish
Back Splash	Marble
Flooring	Travertine
Walls	Oak Wood Boiserie
Ceiling	White Painted
Door to FOH area	Glazed doors with bronzed frame and fluted Glass
Door to BOH area	Oak Wood Finish
Appliances	Gaggenau
Plumbing Fixtures	Hansgrohe Axor



Powder Room	
Flooring	Travertine
Plumbing Fixtures and Accessories	Hansgrohe Axor
Vanity Counter	Marble
Walls	Fluted Travertine and Vinyl Wallpaper

Master Bedroom	
Flooring	Oak Wood
Walls	Oak Wood Boiserie
Ceiling	White Painted
Coffer	Gold Painted
Internal Doors	Oak Wood Finish
Balcony Flooring	Timber Effect Finish
Facade	Sliding System with bronze finish frame

Master Bathroom	
Flooring	Travertine
Walls	Travertine
Sanitary Fixtures	Toto (wc)
Plumbing Fixtures	Hansgrohe Axor
Vanity Counter	Marble
Shower / WC cubicles	Clear Tempered Fluted Glass
Facade	Sliding system with bronze finish frame



Secondary Bedroom	
Flooring	Oak Wood
Walls	Oak Wood Boiserie
Ceiling	White Painted
Coffer	Gold Painted
Internal Doors	Oak Wood Finish
Balcony Flooring	Timber Effect Finish
Facade	Sliding system with bronze finish frame

Typical Bathrooms	
Flooring	Travertine
Walls	Fluted Travertine
Plumbing Fixtures and Accessories	Hansgrohe Axor
Vanity Counter	Marble
Shower / WC cubicles	Clear Fluted Glass

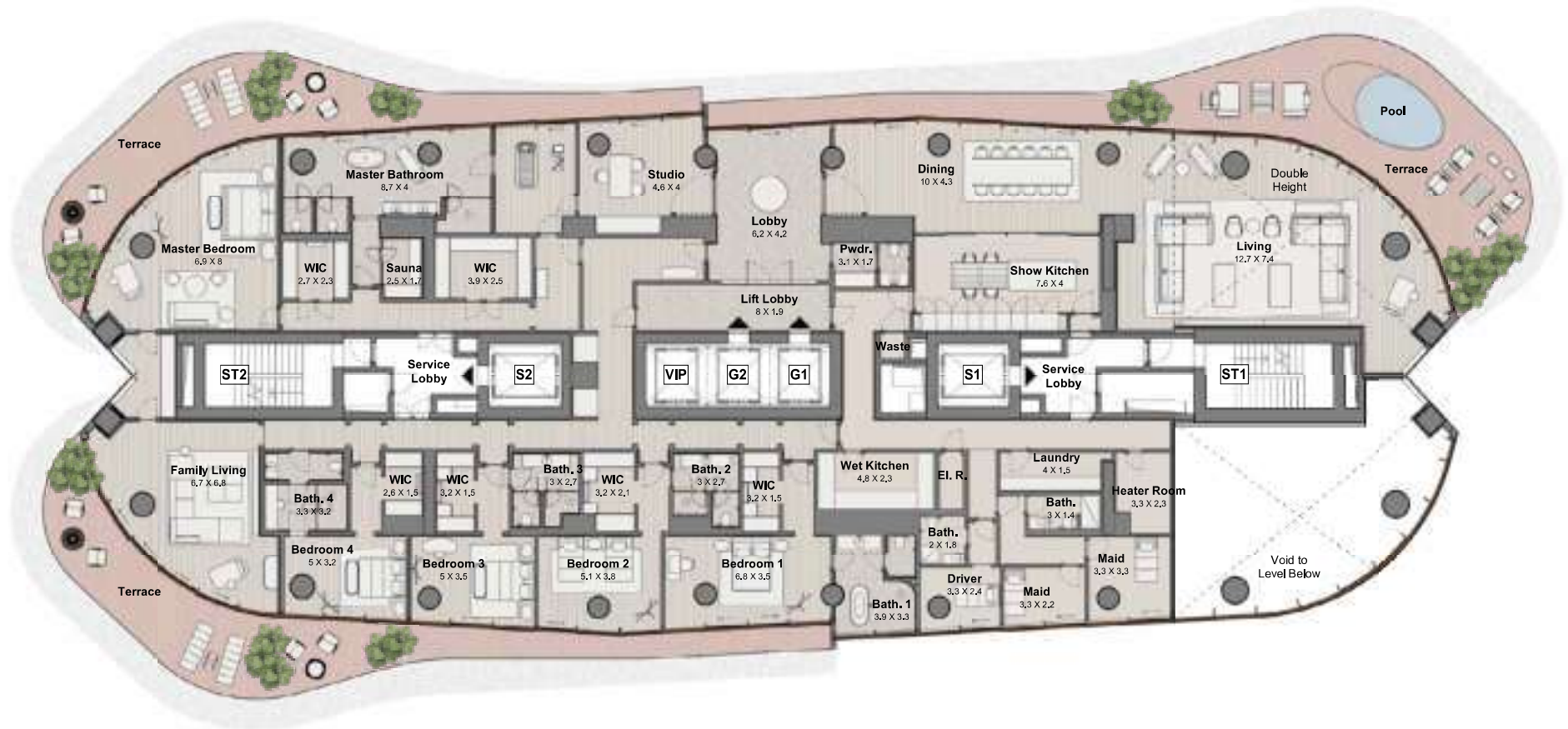
Service Area	
Flooring	Porcelain Stoneware
Walls	White Painted
Ceiling	White Painted
Internal Doors	White Painted
Balcony Flooring	Timber Effect Finish
Facade	Sliding system with bronze finish frame



The background of the image is a close-up of a marble surface with a complex, organic pattern of veins in shades of grey, white, and light beige. The veins flow diagonally across the frame, creating a sense of movement and depth. The lighting is soft and even, highlighting the natural texture of the stone.

5-BEDROOM  
PENTHOUSE

5-BEDROOM PENTHOUSE - TYPE A - FLOOR PLAN

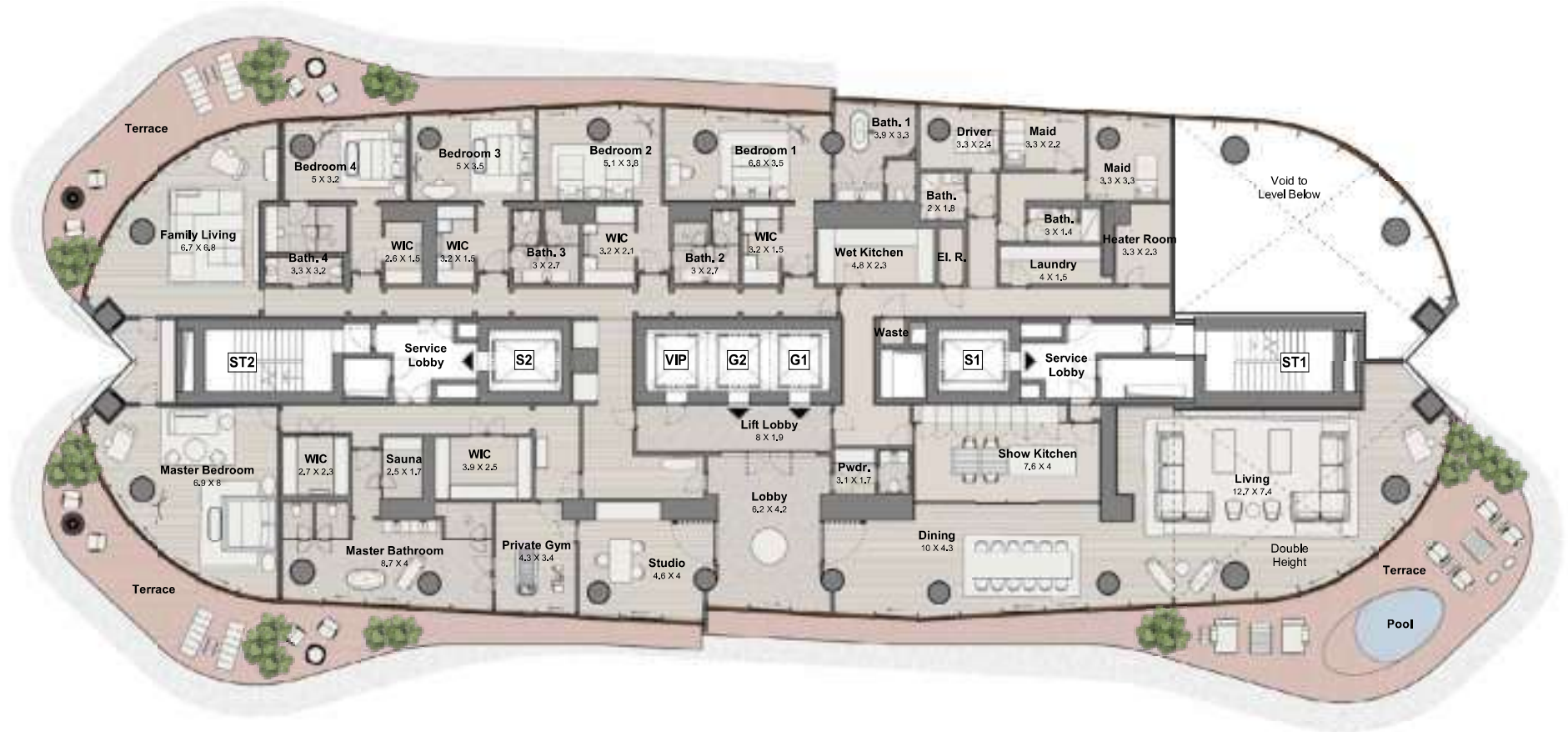


Suite Areas (A)	Balcony Areas (B)	NSA (A + B)
9086.46 ft <sup>2</sup>	2570.31 ft <sup>2</sup>	11656.78 ft <sup>2</sup>
844.16 m <sup>2</sup>	238.79 m <sup>2</sup>	1082.95 m <sup>2</sup>





5-BEDROOM PENTHOUSE - TYPE B - FLOOR PLAN



Suite Areas (A)	Balcony Areas (B)	NSA (A + B)
9088.29 ft <sup>2</sup>	2566.22 ft <sup>2</sup>	11654.52 ft <sup>2</sup>
844.33 m <sup>2</sup>	238.41 m <sup>2</sup>	1082.74 m <sup>2</sup>



## 5-BEDROOM PENTHOUSE - OUTDOOR TERRACES



## 5-BEDROOM PENTHOUSE - LOBBY



## 5-BEDROOM PENTHOUSE - LIVING ROOM



## 5-BEDROOM PENTHOUSE - FAMILY LIVING ROOM



5-BEDROOM PENTHOUSE - DINING ROOM



5-BEDROOM PENTHOUSE - KITCHEN



5-BEDROOM PENTHOUSE - MASTER BEDROOM





## 5-BEDROOM PENTHOUSE - MASTER BATHROOM



## 5-BEDROOM PENTHOUSE - MASTER BATHROOM



# FINISHING SCHEDULE



Lobby	
Flooring	Travertine
Walls	Fluted Travertine
Ceiling	White Painted
Coffer	Gold Painted
Entrance Door	Glazed doors with bronzed frame and fluted Glass
Internal Door	Glazed doors with bronzed frame and fluted Glass
Facade	Sliding System with bronze finish frame

Show Kitchen	
Cabinetry	Oak Wood Finish
Island Counter	Marble and Bronze Finish
Back Splash	Marble
Flooring	Travertine
Walls	Oak Wood Boiserie
Ceiling	White Painted
Door to FOH area	Glazed doors with bronzed frame and fluted Glass
Door to BOH area	Oak Wood Finish
Appliances	Gaggenau
Plumbing Fixtures	Hansgrohe Axor



Powder Room	
Flooring	Travertine
Plumbing Fixtures and Accessories	Hansgrohe Axor
Vanity Counter	Marble
Walls	Fluted Travertine and Vinyl Wallpaper

Master Bedroom	
Flooring	Oak Wood
Walls	Oak Wood Boiserie
Ceiling	White Painted
Coffer	Gold Painted
Internal Doors	Oak Wood Finish
Balcony Flooring	Timber Effect Finish
Facade	Sliding System with bronze finish frame

Master Bathroom	
Flooring	Travertine
Walls	Travertine
Sanitary Fixtures	Toto (wc)
Plumbing Fixtures	Hansgrohe Axor
Vanity Counter	Marble
Shower / WC cubicles	Clear Tempered Fluted Glass
Facade	Sliding system with bronze finish frame



Secondary Bedroom	
Flooring	Oak Wood
Walls	Oak Wood Boiserie
Ceiling	White Painted
Coffer	Gold Painted
Internal Doors	Oak Wood Finish
Balcony Flooring	Timber Effect Finish
Facade	Sliding system with bronze finish frame

Typical Bathrooms	
Flooring	Travertine
Walls	Fluted Travertine
Plumbing Fixtures and Accessories	Hansgrohe Axor
Vanity Counter	Marble
Shower / WC cubicles	Clear Fluted Glass

Service Area	
Flooring	Porcelain Stoneware
Walls	White Painted
Ceiling	White Painted
Internal Doors	White Painted
Balcony Flooring	Timber Effect Finish
Facade	Sliding system with bronze finish frame



The background of the entire page is a close-up, high-resolution image of a marble surface. The marble has a complex, organic pattern of veins in shades of light beige, cream, and soft grey, set against a slightly darker, warm-toned base. The veins flow diagonally across the frame, creating a sense of movement and depth. The lighting is soft and even, highlighting the natural texture and subtle color variations of the stone.

INTERIOR DESIGN CONCEPT

MOOD BOARDS - PENTHOUSES

**PENTHOUSES**  
LIVING ROOM MOOD



**DECORATIVE GOLD PAINT  
OIKOS IMPERIUM**

**BRUSHED OAK VENEER  
WITH VERTICAL GROOVE**

**PENTHOUSES**  
LIVING ROOM MOOD

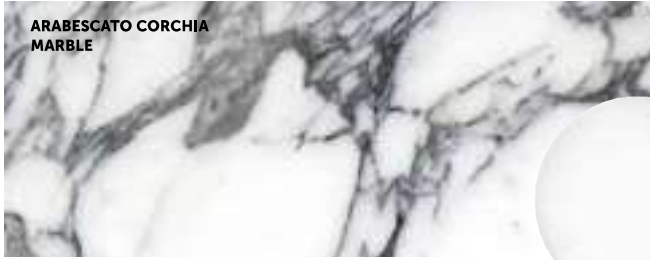


**DECORATIVE GOLD PAINT**  
**OIKOS IMPERIUM**

**BRUSHED OAK VENEER**  
**WITH VERTICAL GROOVE**

# PENTHOUSES

## KITCHEN & DINING ROOM MOOD



ARABESCATO CORCHIA  
MARBLE



SILK WALL COVER



DECORATIVE GOLD PAINT  
OIKOS IMPERIUM

BRUSHED OAK VENEER

**PENTHOUSES**  
MASTER BEDROOM MOOD

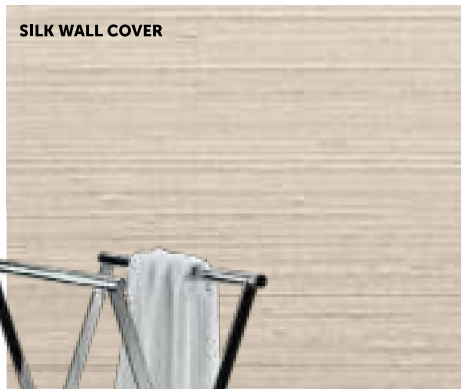


**BRUSHED OAK VENEER  
WITH VERTICAL GROOVE**

**NATURAL LEATHER WITH  
VISIBLE STITCHING**



**PENTHOUSES**  
MASTER BATHROOM MOOD



The image features a background of light-colored marble with intricate, flowing grey and white veining. The text "SKY VILLA" is centered in a dark, serif font.

SKY VILLA

SKY VILLA - LEVEL 25 - FLOOR PLAN



OVERALL

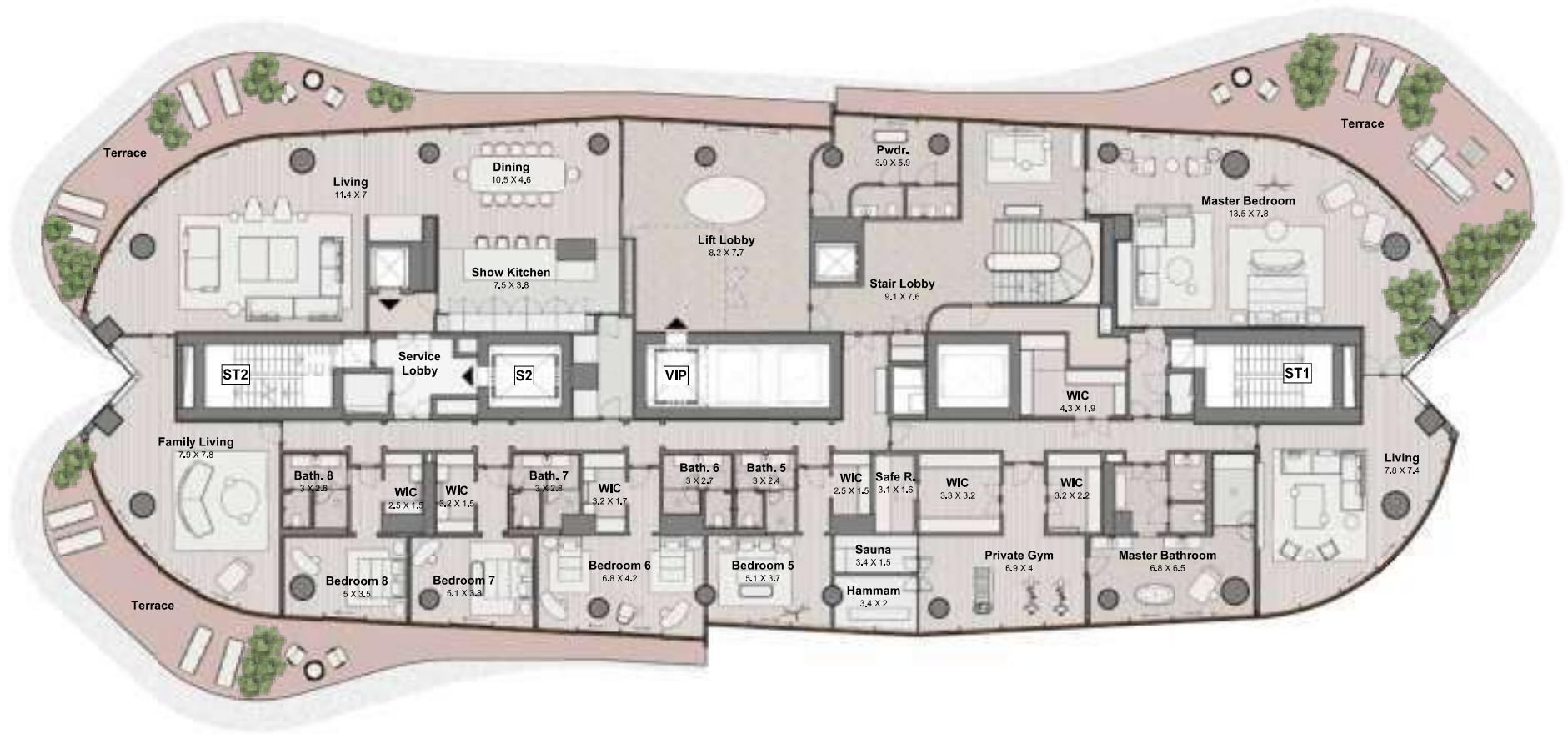
Suite Areas (A)	Balcony Areas (B)	NSA (A + B)
25904.10 ft <sup>2</sup>	13066.10 ft <sup>2</sup>	38970.20 ft <sup>2</sup>
2406.57 m <sup>2</sup>	1213.88 m <sup>2</sup>	3620.45 m <sup>2</sup>

LEVEL 25

Suite Areas (A)	Balcony Areas (B)	NSA (A + B)
9145.23 ft <sup>2</sup>	2560.30 ft <sup>2</sup>	11705.54 ft <sup>2</sup>
849.62 m <sup>2</sup>	237.86 m <sup>2</sup>	1087.48 m <sup>2</sup>



SKY VILLA - LEVEL 26 - FLOOR PLAN



OVERALL

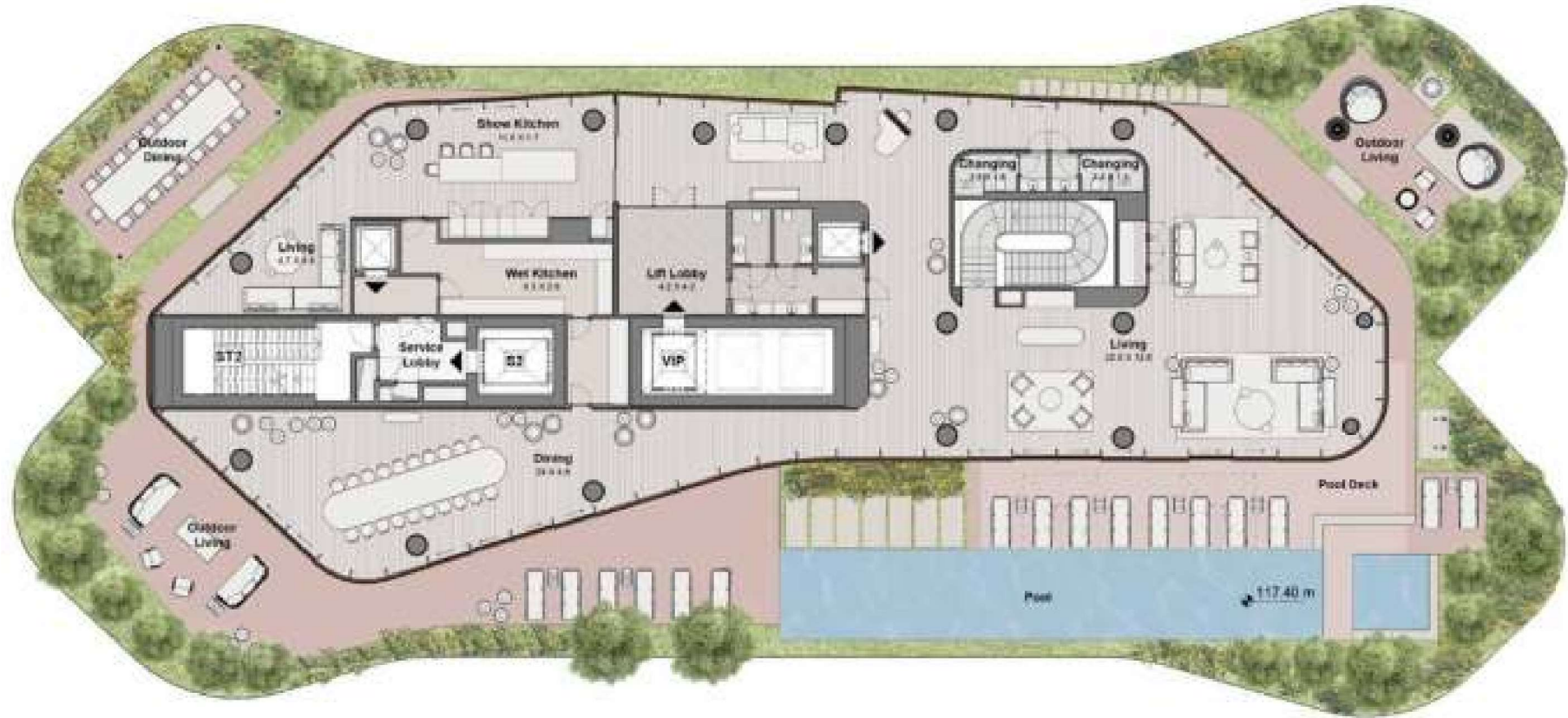
Suite Areas (A)	Balcony Areas (B)	NSA (A + B)
25904.10 ft <sup>2</sup>	13066.10 ft <sup>2</sup>	38970.20 ft <sup>2</sup>
2406.57 m <sup>2</sup>	1213.88 m <sup>2</sup>	3620.45 m <sup>2</sup>

LEVEL 26

Suite Areas (A)	Balcony Areas (B)	NSA (A + B)
10335.18 ft <sup>2</sup>	2512.19 ft <sup>2</sup>	12847.37 ft <sup>2</sup>
960.17 m <sup>2</sup>	233.39 m <sup>2</sup>	1193.56 m <sup>2</sup>



SKY VILLA - LEVEL 27 - FLOOR PLAN



OVERALL

Suite Areas (A)	Balcony Areas (B)	NSA (A + B)
25904.10 ft <sup>2</sup>	13066.10 ft <sup>2</sup>	38970.20 ft <sup>2</sup>
2406.57 m <sup>2</sup>	1213.88 m <sup>2</sup>	3620.45 m <sup>2</sup>

LEVEL 27

Suite Areas (A)	Balcony Areas (B)	NSA (A + B)
6423.69 ft <sup>2</sup>	7993.60 ft <sup>2</sup>	14417.29 ft <sup>2</sup>
596.78 m <sup>2</sup>	742.63 m <sup>2</sup>	1339.41 m <sup>2</sup>





SKY VILLA - LOBBY



SKY VILLA - LOBBY





## SKY VILLA - LOBBY



## SKY VILLA - LIVING ROOM



## SKY VILLA - DINING ROOM



## SKY VILLA - MASTER BEDROOM



## SKY VILLA - MASTER BATHROOM



## SKY VILLA - SPA



## SKY VILLA - SECONDARY BEDROOM



SKY VILLA - SPA





## SKY VILLA - OUTDOOR TERRACE



SKY VILLA - OUTDOOR DINING



# FINISHING SCHEDULE



Lobby	
Flooring	Travertine
Walls	Fluted Travertine
Ceiling	White Painted
Coffer	Gold Painted
Entrance Door	Glazed doors with bronzed frame and fluted Glass
Internal Door	Glazed doors with bronzed frame and fluted Glass
Columns	Fluted Travertine
Facade	Sliding System with bronze finish frame

Show Kitchen	
Cabinetry	Oak Wood Finish
Island Counter	Marble and Bronze Finish
Back Splash	Marble
Flooring	Travertine
Walls	Oak Wood Boiserie
Ceiling	White Painted
Door to FOH area	Glazed doors with bronzed frame and fluted Glass
Door to BOH area	Oak Wood Finish
Appliances	Gaggenau
Plumbing Fixtures	Hansgrohe Axor

Powder Room	
Flooring	Travertine
Walls	Fluted Travertine and Vinyl Wallpaper
Plumbing Fixtures and Accessories	Hansgrohe Axor
Vanity Counter	Marble

Master Bedroom	
Flooring	Oak Wood
Walls	Oak Wood Boiserie
Ceiling	White Painted
Coffer	Gold Painted
Internal Doors	Oak Wood Finish
Balcony Flooring	Timber Effect Finish
Wall	Wood Veneer Wallpaper
Columns	Fluted Travertine
Facade	Sliding System with bronze finish frame

Master Bathroom	
Flooring	Travertine
Walls	Travertine Mosaic
Plumbing Fixtures and Accessories	Hansgrohe Axor
Sanitary Fixtures	Toto (wc)
Columns	Travertine Mosaic
Vanity Counter	Marble
Shower / WC cubicles	Clear Fluted Glass
Facade	Sliding system with wood finish frame

Lift car	
Flooring	Oak Wood
Walls	Oak wood finish and mirror
Ceiling	Painted
Doors	Bronze Finish



Secondary Bedroom	
Flooring	Oak Wood
Walls	Oak Wood Boiserie
Ceiling	White Painted
Coffer	Gold Painted
Columns	Silk Wallpaper
Internal Doors	Oak Wood Finish
Balcony Flooring	Timber Effect Finish
Facade	Sliding system with wood finish frame

Typical Bathrooms	
Flooring	Travertine
Walls	Fluted Travertine
Plumbing Fixtures and Accessories	Hansgrohe Axor
Vanity Counter	Marble
Shower / WC cubicles	Clear Fluted Glass

Service Area	
Flooring	Porcelain Stoneware
Walls	White Painted
Ceiling	White Painted
Internal Doors	White Painted
Balcony Flooring	Timber Effect Finish
Facade	Sliding system with bronze finish frame

Staircase	
Treads and risers	Travertine
Railing and handrail	Travertine



The background of the entire page is a close-up, high-resolution image of a marble surface. The marble has a complex, organic pattern of veins in shades of light grey, beige, and off-white, set against a slightly darker, warm-toned base. The veins flow diagonally across the frame, creating a sense of movement and depth. The lighting is soft and even, highlighting the natural texture and subtle color variations of the stone.

INTERIOR DESIGN CONCEPT

MOOD BOARDS - SKY VILLA

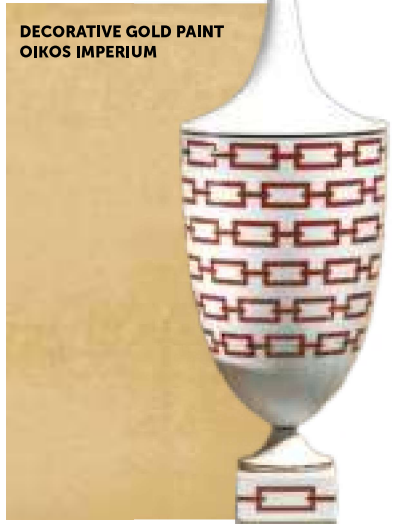
**SKY VILLA**  
LOBBY MOOD



**ARABESCATO CORCHIA  
MARBLE**



**BRUSHED OAK VENEER**



**DECORATIVE GOLD PAINT  
OIKOS IMPERIUM**



**NAVONA TRAVERTINE  
CROSSCUT PALLADIANA  
PATTERN**



**FLUTED NAVONA  
TRAVERTINE CROSSCUT**



**SKY VILLA**  
LIVING & DINING ROOM MOOD



STRAW MARQUETRY

DECORATIVE GOLD PAINT  
OIKOS IMPERIUM

ARABESCATO  
CORCHIA MARBLE

FLUTED NAVONA  
TRAVERTINE CROSSCUT

NATURAL OAK FLOOR  
CUSTOM PATTERN

**SKY VILLA**  
MASTER BEDROOM MOOD

DECORATIVE GOLD PAINT  
OIKOS IMPERIUM

FLUTED NAVONA  
TRAVERTINE CROSSCUT

NATURAL LEATHER WITH  
VISIBLE STITCHING

STRAW MARQUETRY



**SKY VILLA**  
MASTER BATHROOM MOOD



**TRAVERTINE HANDCUT  
MOSAIC**



**FLUTED GLASS**



**NAVONA TRAVERTINE CROSSCUT  
PALLADIANA PATTERN**





# SKY VILLA

## SECONDARY BEDROOM & BATHROOM MOOD



**SKY VILLA**  
OUTDOOR TERRACE MOOD



TRAVERTINE

NAVONA TRAVERTINE CROSSCUT  
PALLADIANA PATTERN

The image features a background of light-colored marble with dark, wavy veins. The word "PARKING" is centered in a dark, sans-serif font.

PARKING

# PARKING LAYOUT



PARKING MOOD



# THANKS FOR WATCHING

CONTACT US FOR MORE INFORMATION