



YOU ARE A GUIDE TO THE
WORLD OF LUXURY



SLS

RESIDENCES
THE PALM DUBAI

ROYA
LIFESTYLE DEVELOPMENTS

**Disclaimer: This proprietary presentation contains privileged and confidential information. You are hereby notified that you should not physically, digitally, or verbally share, distribute, copy, or forward the contents of this presentation.*

Located on the Western Crescent of the Palm



SLS Residences Palm

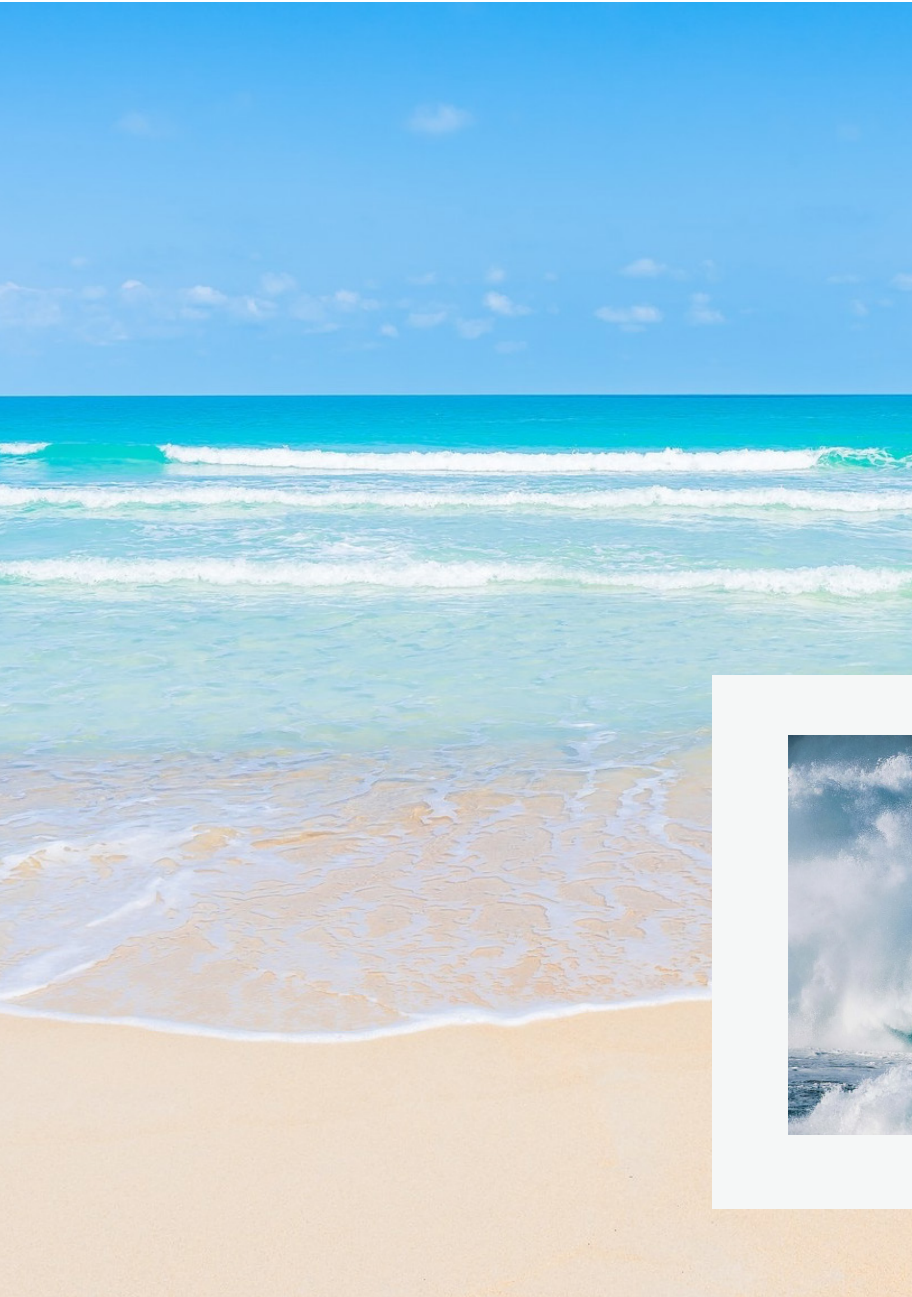
A unique collection of ultra luxury residences by SLS.

With hues of turquoise washing in from the Arabian Sea and soft golden touches of sand dunes all around, SLS Residences The Palm is a perfect mosaic of the Palm Jumeirah.

Elements of air, light, water and shadows are cohesively blended throughout the building, allowing it to transcend to life.

The residence is designed to depict motion, through wave resembling abstract shapes on its exterior.

The use of high ceilings in all units and the implementation of sustainable material creates a soft and ethereal essence throughout SLS Residences Palm. Enjoy a tranquil and endless 360-degree views of the sea.





Live the ultimate luxury lifestyle in
Dubai with a five star global brand









World Class Amenities



Clubhouse - Residence Lounge



Private Dining - "Chef's Table"



Luxury Residence Pool



Music/Pod Cast Recording Studio



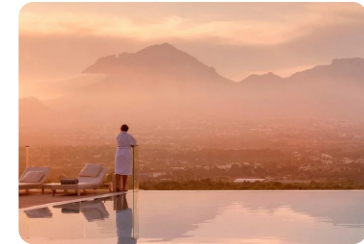
Fitness Center



High-end Games Room



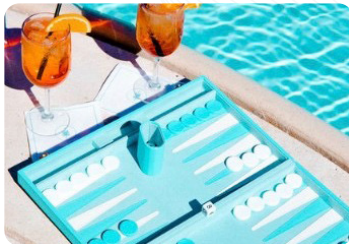
Private Screening Room



Health & Wellness Facility



Guesthouse/Suite



Pool-side & Beach Games



Outdoor Activities



Kids Club

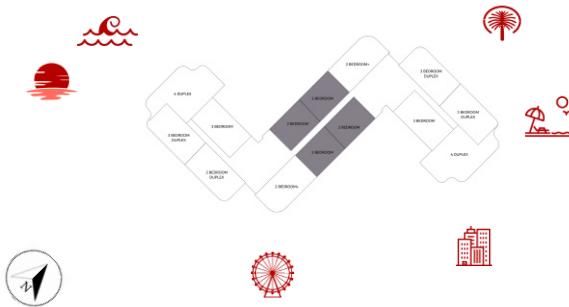
SLS

RESIDENCES
THE PALM DUBAI

2 BEDROOM TYPE 1

SUITE AREA	131.77 M ²	1,418.00 SQFT
BALCONY AREA	23.78 M ²	256.00 SQFT
TOTAL SELLABLE AREA	155.55 M²	1,674.00 SQFT

KEYPLAN
(GROUND FLOOR - 1ST - 2ND -
3RD - 4TH -5TH - 6TH - 7TH - 8TH)



FLOOR PLAN 1. All dimensions are in imperial and metric, and measured from finish to finish excluding construction tolerances. 2. All materials, dimensions, and drawings are approximate only. 3. Information is subject to change without notice, at developer's absolute discretion. 4. Actual area may vary from the stated area. 5. Drawings not to scale. 6. All images used are for illustrative purposes only and do not represent the actual size, features, specifications, fittings, and furnishings. 7. The developer reserves the right to make revisions / alterations, at it's absolute discretion, without any liability whatsoever.

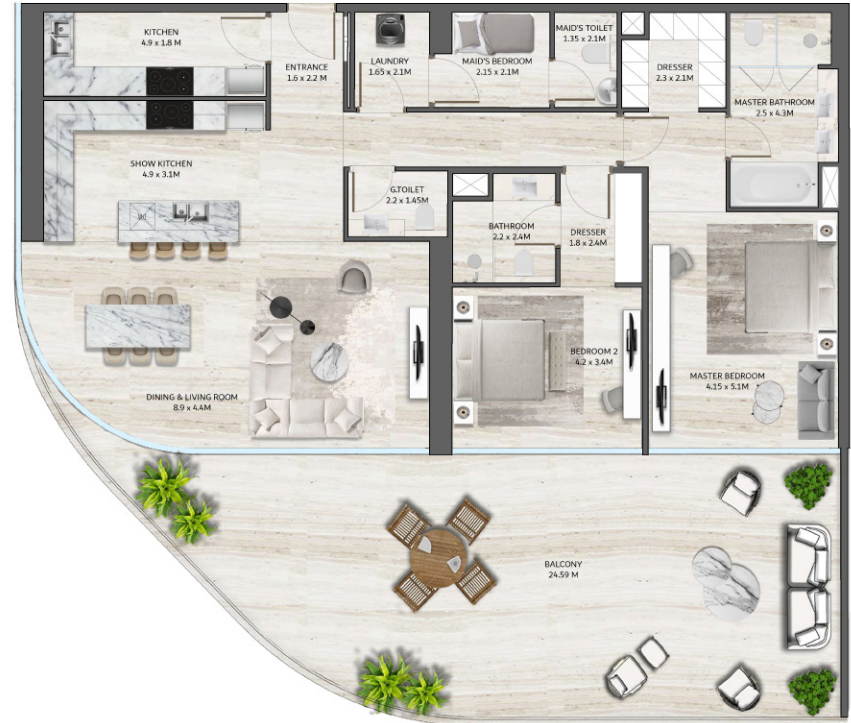
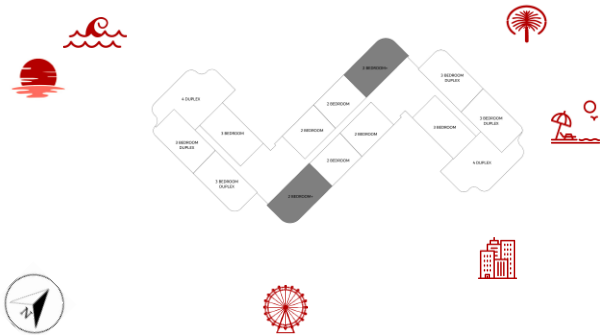
SLS

RESIDENCES
THE PALM DUBAI

2 BEDROOM TYPE 2

SUITE AREA	163.75 M2	1,763.00 SQFT
BALCONY AREA	24.59 M2	265.00 SQFT
TOTAL SELLABLE AREA	188.34 M2	2,027.00 SQFT

KEYPLAN
(GROUND FLOOR - 1ST - 2ND -
3RD - 4TH -5TH - 6TH - 7TH - 8TH)



FLOOR PLAN 1. All dimensions are in imperial and metric, and measured from finish to finish excluding construction tolerances. 2. All materials, dimensions, and drawings are approximate only. 3. Information is subject to change without notice, at developer's absolute discretion. 4. Actual area may vary from the stated area. 5. Drawings not to scale. 6. All images used are for illustrative purposes only and do not represent the actual size, features, specifications, fittings, and furnishings. 7. The developer reserves the right to make revisions / alterations, at it's absolute discretion, without any liability whatsoever.

SLS

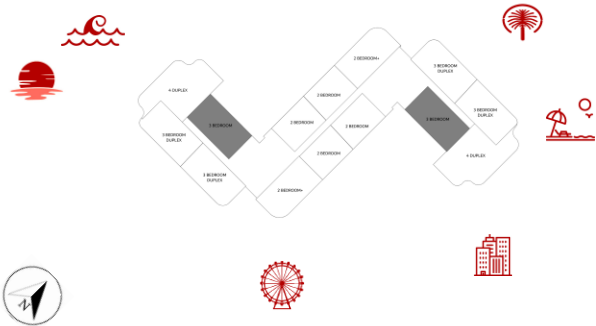
RESIDENCES
THE PALM DUBAI

3 BEDROOM TYPE 1

SUITE AREA	174.53 M2	1,879.00 SQFT
BALCONY AREA	54.17 M2	583.08 SQFT
TOTAL SELLABLE AREA	228.7 M2	2,462.00 SQFT

KEYPLAN

(GROUND FLOOR - 1ST - 2ND -
3RD - 4TH -5TH - 6TH - 7TH - 8TH)



FLOOR PLAN 1. All dimensions are in imperial and metric, and measured from finish to finish excluding construction tolerances. 2. All materials, dimensions, and drawings are approximate only. 3. Information is subject to change without notice, at developer's absolute discretion. 4. Actual area may vary from the stated area. 5. Drawings not to scale. 6. All images used are for illustrative purposes only and do not represent the actual size, features, specifications, fittings, and furnishings. 7. The developer reserves the right to make revisions / alterations, at it's absolute discretion, without any liability whatsoever.

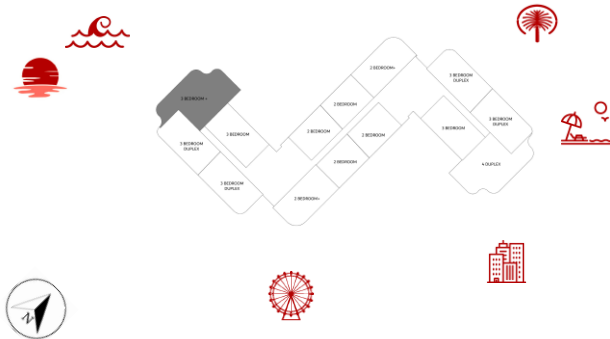
SLS

RESIDENCES
THE PALM DUBAI

3 BEDROOM TYPE 2

SUITE AREA	257.84 M2	2,775.00 SQFT
BALCONY AREA	72.55 M2	780.92 SQFT
TOTAL SELLABLE AREA	330.39 M2	3,555.92 SQFT

KEYPLAN (GROUND FLOOR - 1ST FLOOR)



FLOOR PLAN 1. All dimensions are in imperial and metric, and measured from finish to finish excluding construction tolerances. 2. All materials, dimensions, and drawings are approximate only. 3. Information is subject to change without notice, at developer's absolute discretion. 4. Actual area may vary from the stated area. 5. Drawings not to scale. 6. All images used are for illustrative purposes only and do not represent the actual size, features, specifications, fittings, and furnishings. 7. The developer reserves the right to make revisions / alterations, at it's absolute discretion, without any liability whatsoever.

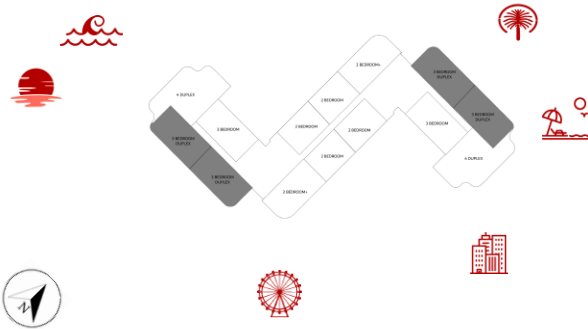
SLS

RESIDENCES
THE PALM DUBAI

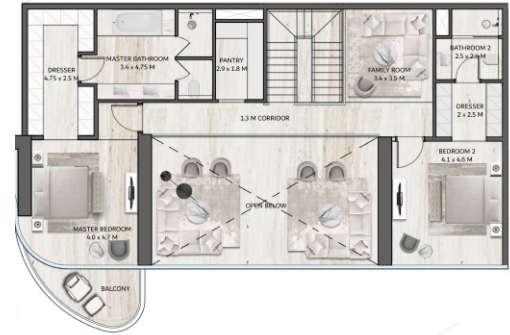
3 BEDROOM DUPLEX

SUITE AREA	303.72 M2	3,269.00 SQFT
BALCONY AREA	86.8 M2	934.00 SQFT
TOTAL SELLABLE AREA	390.52 M2	4,204.00 SQFT

KEYPLAN (2ND - 4TH - 6TH - 8TH)



LOWER LEVEL



UPPER LEVEL

FLOOR PLAN 1. All dimensions are in imperial and metric, and measured from finish to finish excluding construction tolerances. 2. All materials, dimensions, and drawings are approximate only. 3. Information is subject to change without notice, at developer's absolute discretion. 4. Actual area may vary from the stated area. 5. Drawings not to scale. 6. All images used are for illustrative purposes only and do not represent the actual size, features, specifications, fittings, and furnishings. 7. The developer reserves the right to make revisions / alterations, at its absolute discretion, without any liability whatsoever.

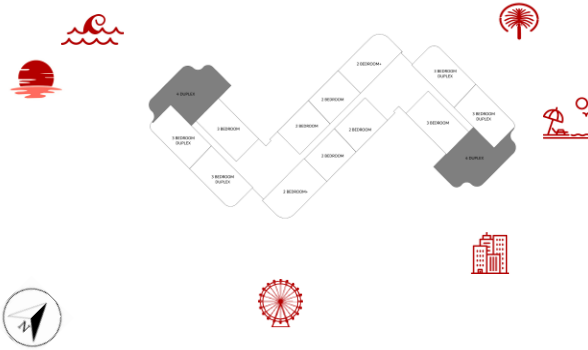
SLS

RESIDENCES
THE PALM DUBAI

4 BEDROOM DUPLEX

SUITE AREA	437.41 M2	4,708.00 SQFT
BALCONY AREA	126.61 M2	1,363.00 SQFT
TOTAL SELLABLE AREA	564.02 M2	6,071.00 SQFT

KEYPLAN (GROUND FLOOR - 2ND - 4TH - 6TH - 8TH)



LOWER LEVEL



UPPER LEVEL

FLOOR PLAN 1. All dimensions are in imperial and metric, and measured from finish to finish excluding construction tolerances. 2. All materials, dimensions, and drawings are approximate only. 3. Information is subject to change without notice, at developer's absolute discretion. 4. Actual area may vary from the stated area. 5. Drawings not to scale. 6. All images used are for illustrative purposes only and do not represent the actual size, features, specifications, fittings, and furnishings. 7. The developer reserves the right to make revisions / alterations, at it's absolute discretion, without any liability whatsoever.

SLS Residences Palm

Unit mix

Apartment Type	85 Simplex 25 Duplex 3 Penthouses	
2 Bedroom	Simplex	60 Units
3 Bedroom	Simplex	25 Units
3 Bedroom	Duplex	16 Units
4 Bedroom	Duplex	9 Units
Penthouses	Duplex	3 Units
	TOTAL	113 UNITS



SLS

RESIDENCES
THE PALM DUBAI

ROYA
LIFESTYLE DEVELOPMENTS

Welcome To the World of Luxury Living

Sheikh Zayed Road
Phone: 800 ROYA
Email: info@roya.ae

THANKS FOR WATCHING

CONTACT US FOR MORE INFORMATION